

Bioanalytical Quantitation Redefined using the SCIEX QTRAP® 6500 LC-MS/MS System



LC-MS/MS Method for the Quantification of Mometasone Furoate in Human Plasma, using the SCIEX QTRAP® 6500+ System

A robust, selective and sensitive LC-ESI-MS method has been developed for the quantification of Mometasone furoate (MF) with Mometasone Furoate D3 as internal standard in human plasma using a solid-phase extraction clean-up step followed by LC-MS/MS analysis using the SCIEX QTRAP® 6500+ LC-MS/MS System. The LLOQ of this method is 250 fg/mL in plasma and LOD 100 fg/mL with neat standard solution.

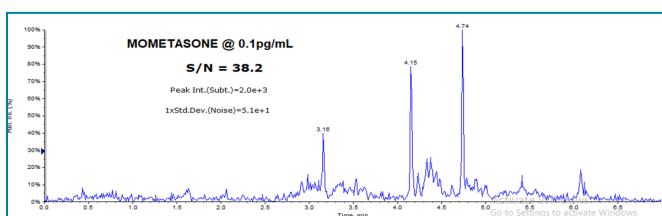


Figure 1. Figure 1: S/N ratio peak at 0.1 pg/mL.

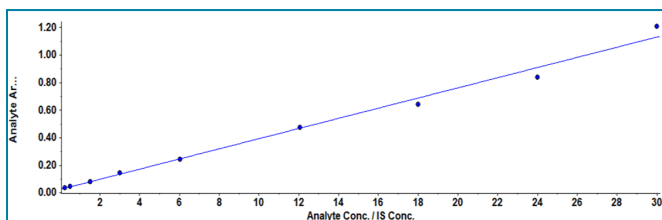


Figure 2. Linearity for Mometasone Furoate range 0.250 to 30 pg/mL.

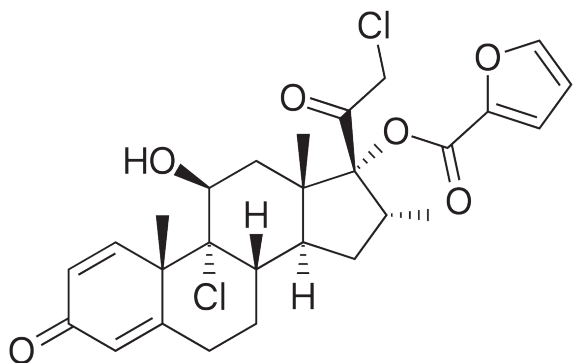


Figure 3. Mometasone Furoate Structure.

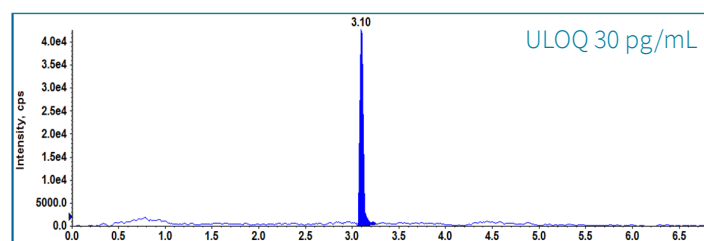
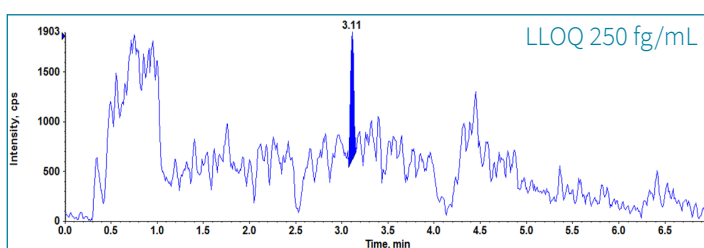
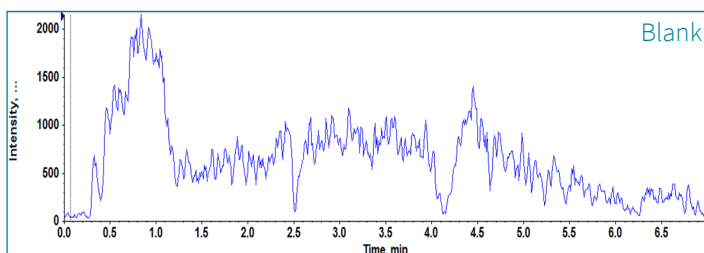


Figure 4. Chromatograms of blank plasma, and calibration curve samples from the Mometasone method.

To learn more about this method please email: Marketing.India@sciex.com

The SCIEX clinical diagnostic portfolio is For In Vitro Diagnostic Use. Rx Only. Product(s) not available in all countries. For information on availability, please contact your local sales representative or refer to <https://sciex.com/diagnostics>. All other products are For Research Use Only. Not for use in Diagnostic Procedures. © 2019 DH Tech. Dev. Pte. Ltd.

RUO-MKT-07-10305-A