

Environmental Method

Pesticide analysis in water

Elevate your environmental testing with the X500R QTOF System

Method details and access to HR-MS/MS libraries to detect, quantify, and confirm pesticides in water samples using HPLC coupled with the X500R QTOF system, powered by SCIEX OS Software.

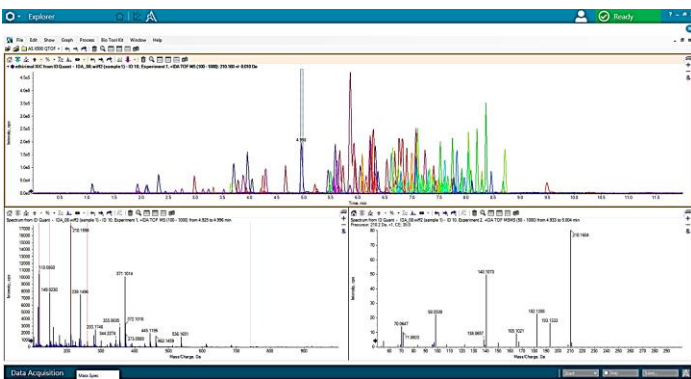


Sample Prep

- Step 1 • Direct aqueous injection



SCIEX OS can deliver faster method set-up



SCIEX OS delivers enhanced data exploration of your acquired TOF MS and TOF MS/MS data

LC Method

Column	Phenomenex Kinetex Biphenyl, 100 x 2.1 mm, 2.6 um	
Mobile Phase A	5 mM ammonium formate in water	
Mobile Phase B	5 mM ammonium formate in methanol	
Flow rate	0.5 mL/min	
Column temperature	30°C	
Injection volume	100 uL	
Gradient profile	Time (min)	% B
	0	0
	10	90
	13	90
	13.1	10
	15	10

