

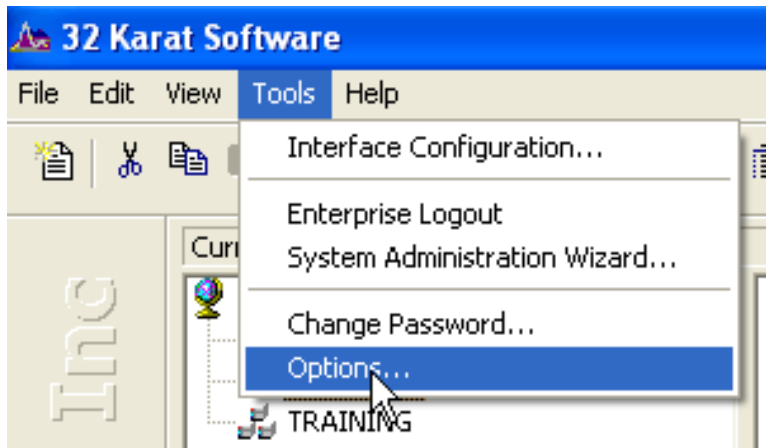
### 32k System Administration

This section describes how to set up 32 Karat for optimal use of the downloaded files using system administration features. For a more complete description of system administration features see the 32 Karat System Administration Guide (Part number: A34942).

#### *Enable Login*

To access system administration features, user login must be enabled and a user with system administration privileges must be logged-in.

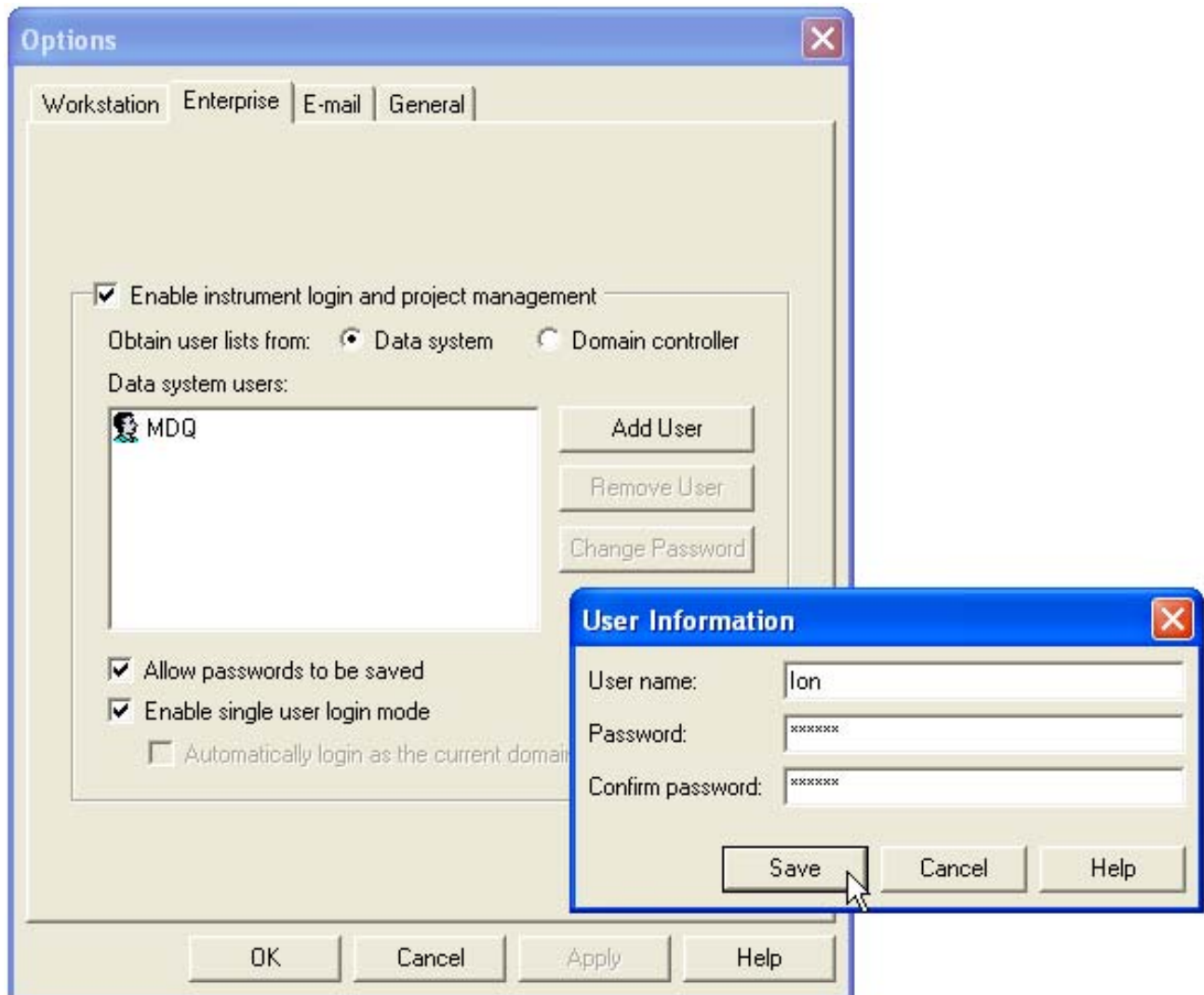
From the 32 Karat **Tools** menu, select **Options**.



Select the **Enterprise** tab. If the computer is connected to a network, existing user names and passwords may be added from a network domain. If the computer is not connected to a network, users may be added to 32 Karat system by clicking the **Add User** button, typing the user name and password into the pop-up window and then clicking **Save**.

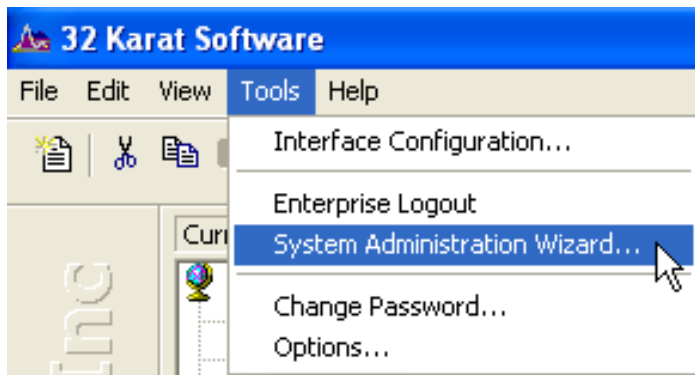
On the Enterprise tab of the Options window select the check boxes for enabling instrument and project management login, password saving, and single user login. Click **Apply**, and then **OK**.

*Note: If the Enterprise tab is not visible, system administration has already been enabled.*

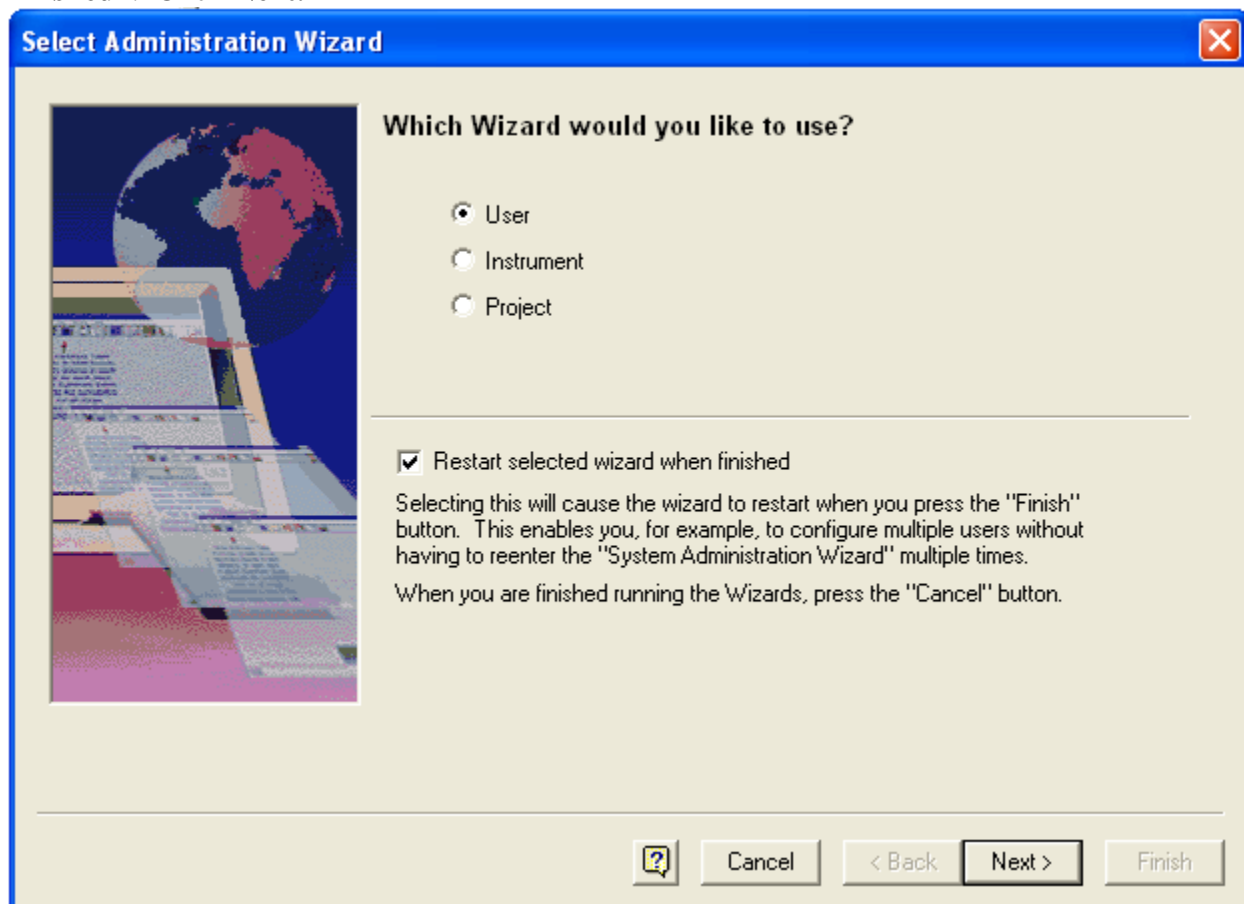


### Select System and Instrument Administrator

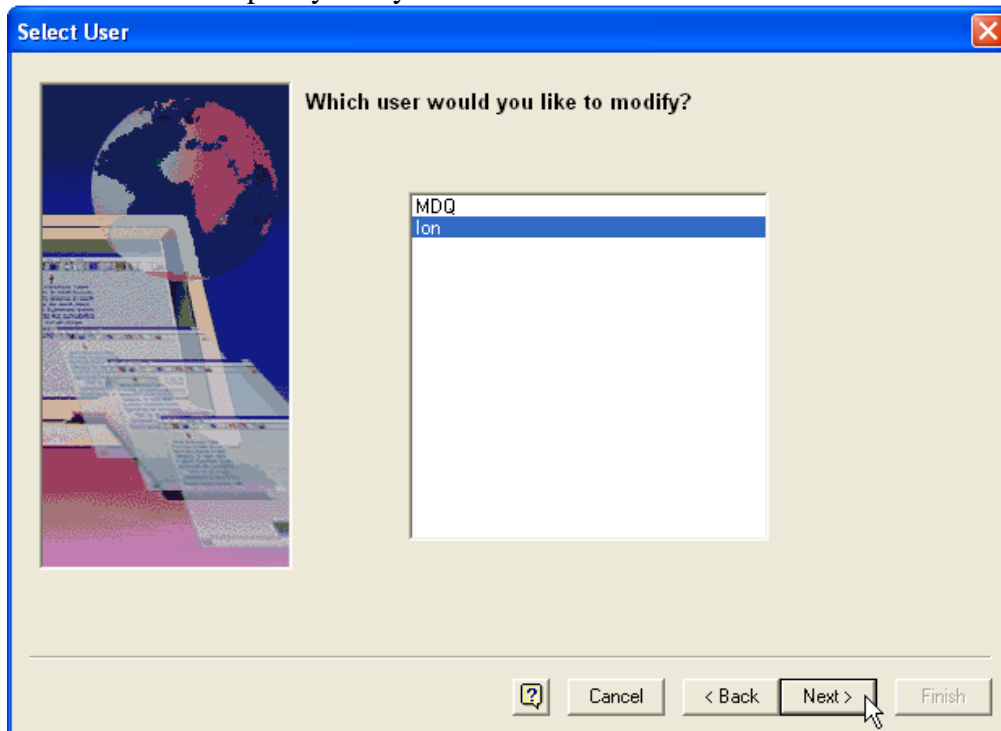
If login has been enabled for the first time on the system, at least one user must be specified as a system administrator. A system administrator can add or remove users and limit user access to instruments or projects. To create and configure instruments, an Instrument Administrator is also required. To specify a system administrator, select **System Administration Wizard** from the 32 Karat **Tools** menu.



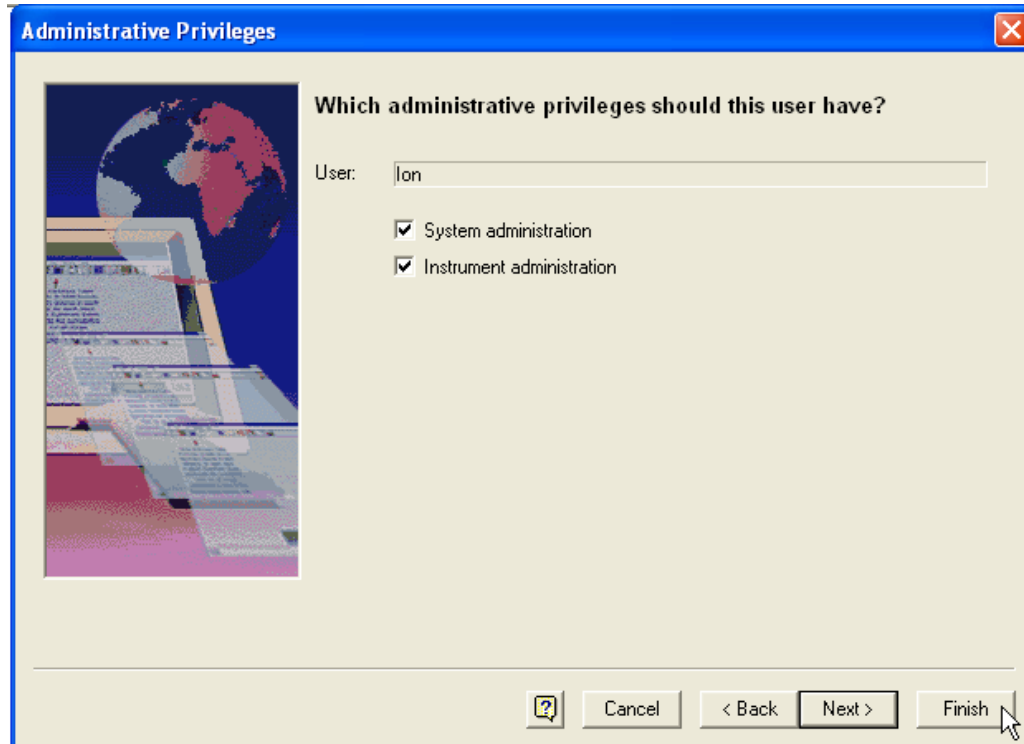
Select the **User** radio button and the check box next to “**Restart the selected wizard when finished**”. Click **Next**.



Select the user to specify for system administration and click **Next**.



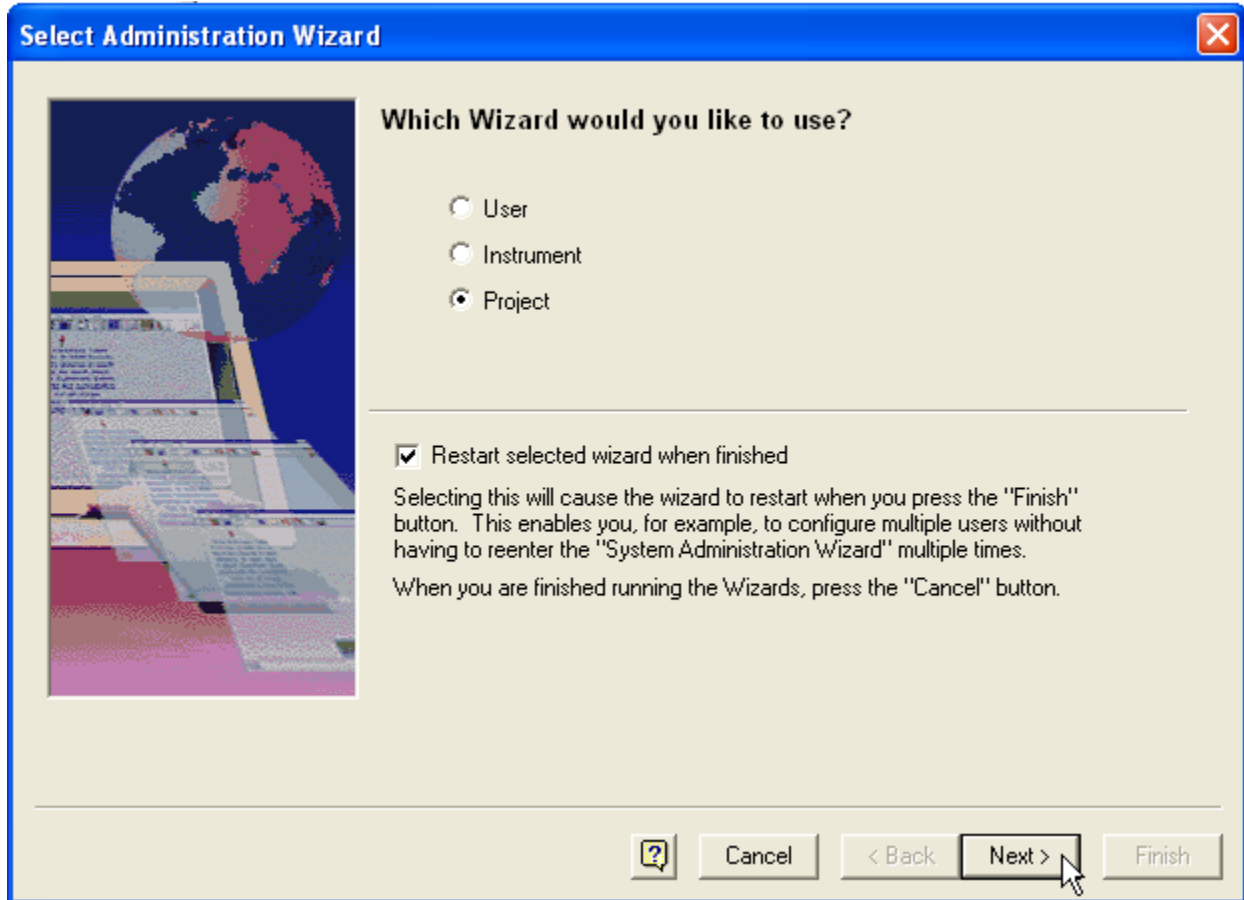
Select both **System Administration** and **Instrument Administration** check boxes and click **Finish**.



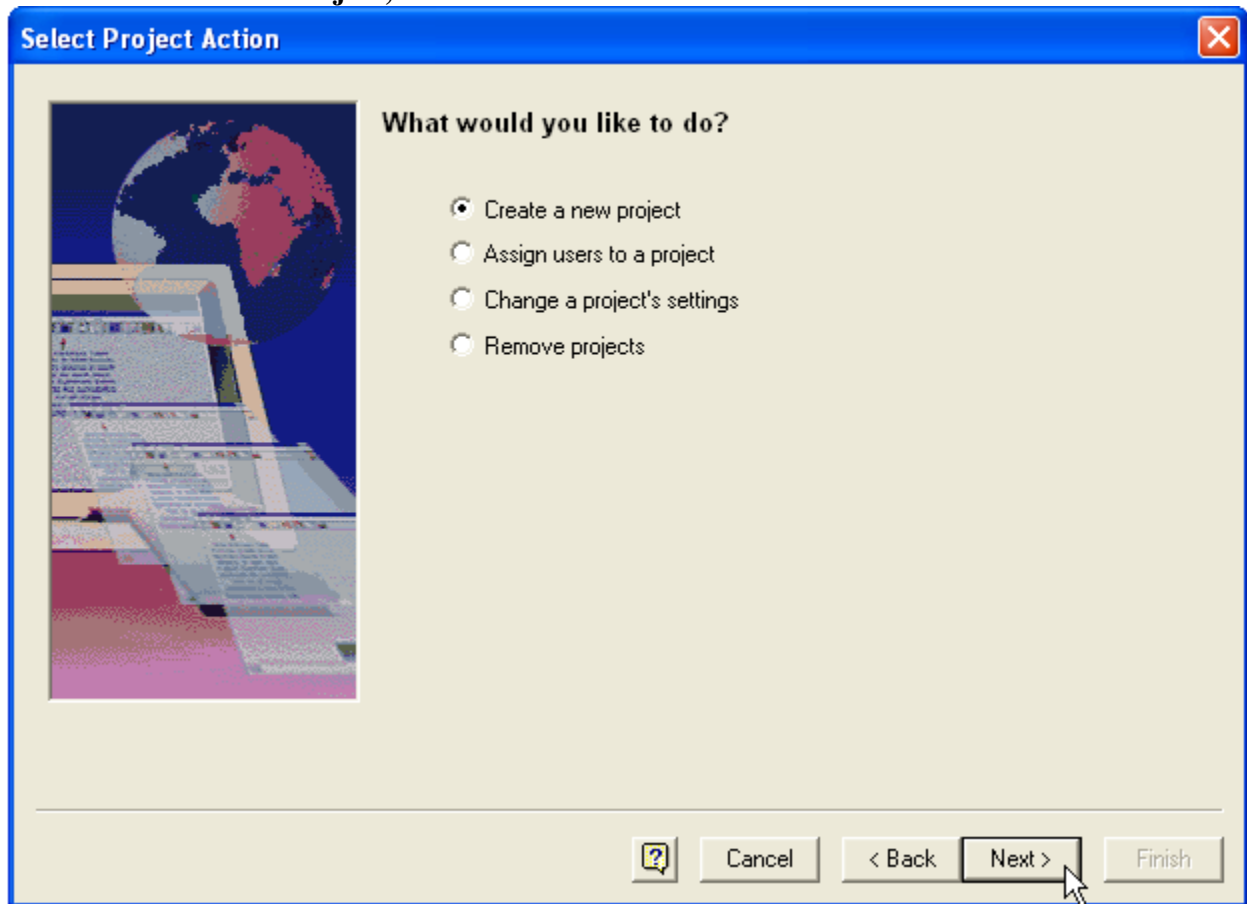
Upon clicking **Finish** the User Wizard will restart. After modifying privileges for any additional users, close the User Wizard window and restart the **System Administration Wizard** from the **Tools** menu.

### ***Create Cation Project folders***

Projects are specially designated folders that are recognized by 32 Karat. When a user is logged into a project, 32 Karat will default the user to the appropriate folders for opening methods, sequences, or other 32 Karat files. Additional security may be applied for user access to these folders. To create the project folder, select Project from the System Administration Wizard window, and then click **Next**.



Select **Create a New Project**, and then click **Next**.



Type the project name in the **Name** field and click **Next**.

**General Project Settings**

What should this project be called and where should it be stored?

Name:

Location:

Description:

File locations:

Methods:

Data:

Sequences:

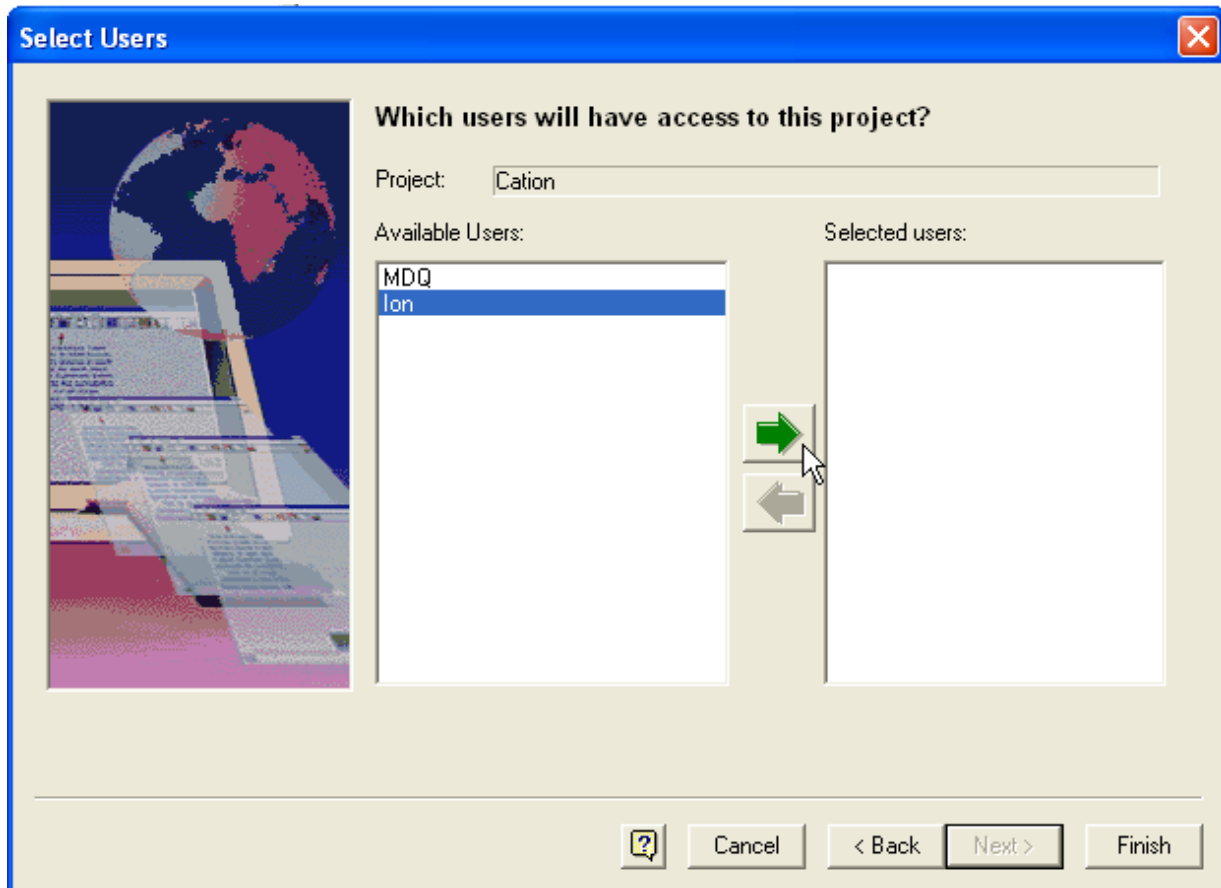
Templates:

Pretreatments:

? Cancel < Back **Next >** Finish

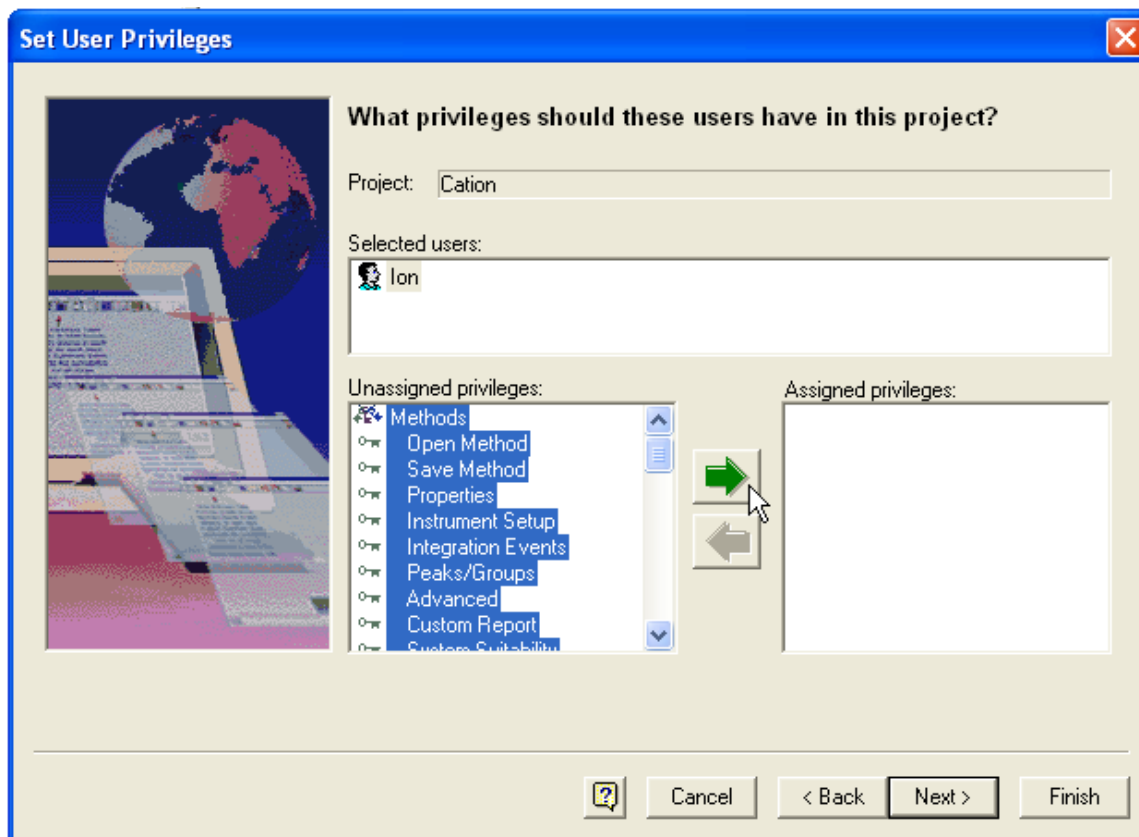
On the two screens that follow, audit trail settings and electronic signature settings may be configured according to the regulatory requirements of the laboratory. For each screen choose the desired settings and click **Next**.

On the **Select Users** screen, highlight those users from the **Available Users** pane who will be granted access to the project and click the green arrow to move them to the **Selected Users** pane. Click **Next**.





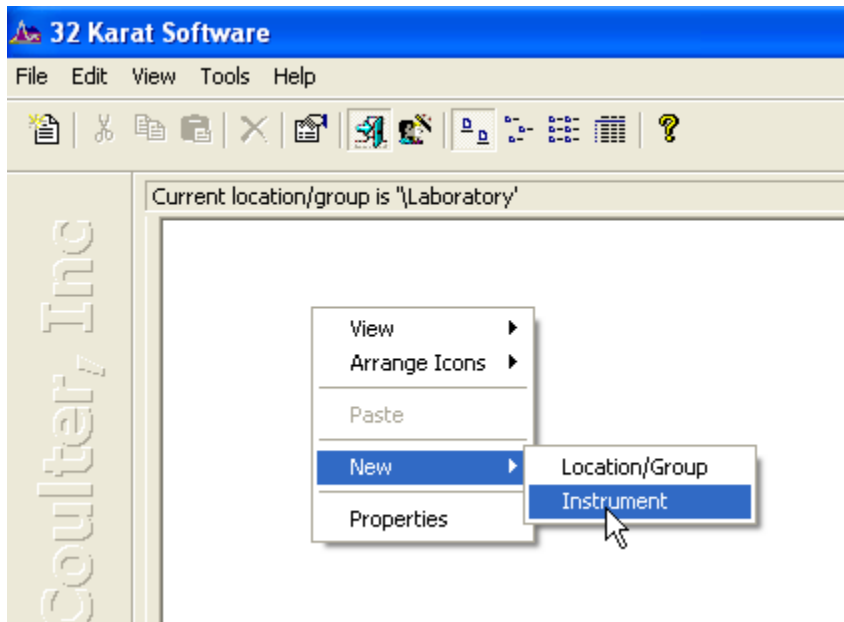
In the **Set User Privileges** window, highlight a user in the **Selected users** pane. (Several users may be selected at once if they are all to have the same assigned privileges.) Assign privileges by selecting from the **Unassigned privileges** pane on the left and clicking the green arrow to move them to the **Assigned privileges** pane on the right.



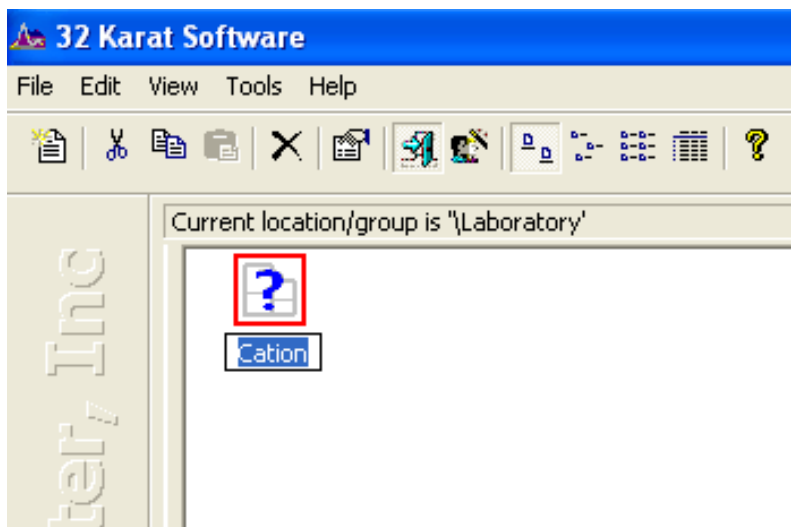
Click **Finish** when completed or select **Next** to edit the electronic signature role of the users and then click **Finish**. The Project Wizard will restart upon clicking the **Finish** button. Click **Cancel** to exit the project wizard.

### *Create and Configure a Cation Analysis Instrument*

Right click on the enterprise screen and select **New -> Instrument**. Alternatively select **New -> Instrument** from the **File** menu of 32 Karat Software.

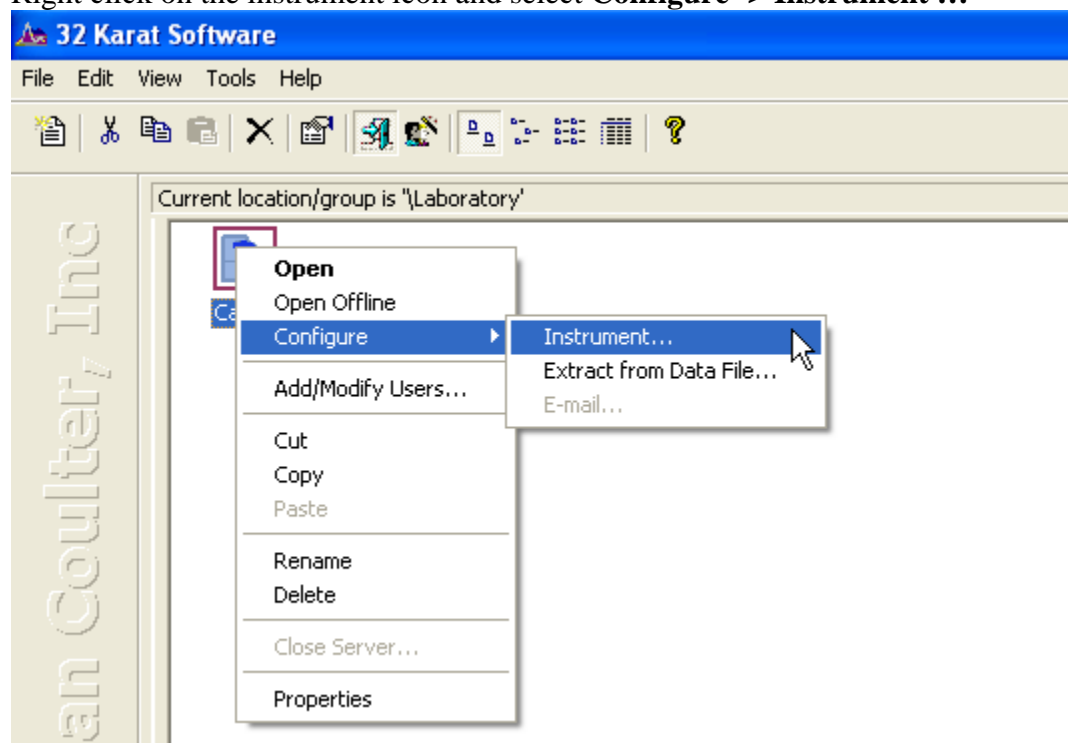


Name the instrument by typing in the name field under the instrument icon.

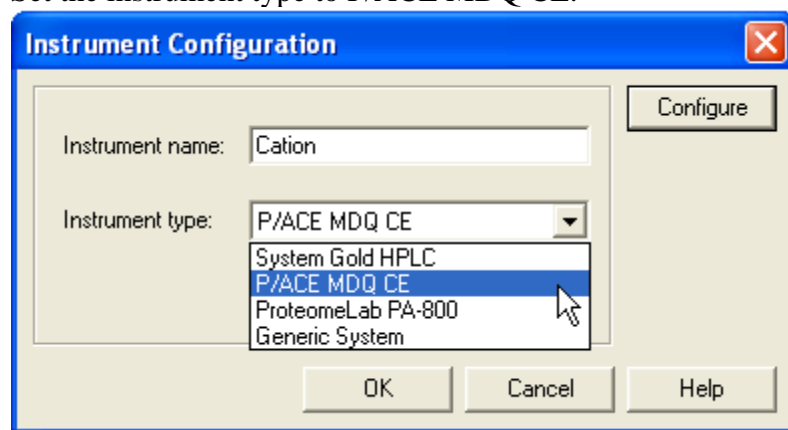


*Note: Include detector information in the instrument name if different detector types are used on the system, (for example, "Cation UV").*

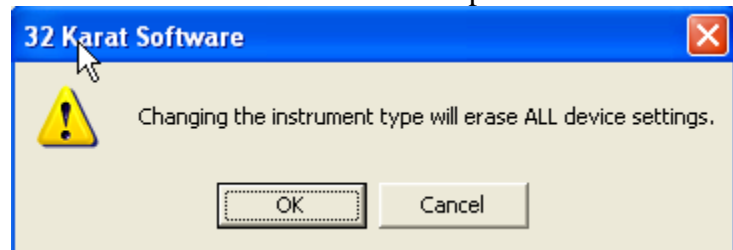
Right click on the instrument icon and select **Configure -> Instrument ...**



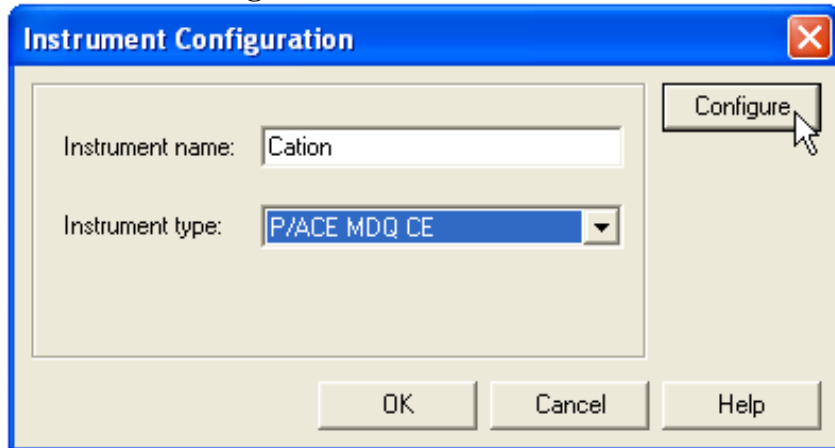
Set the instrument type to P/ACE MDQ CE.



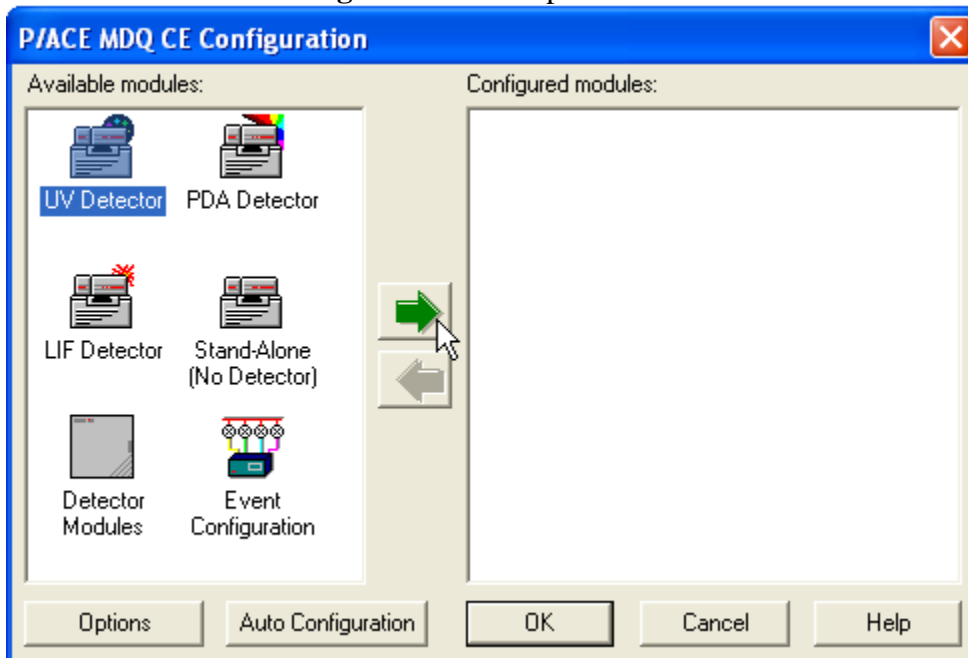
A warning pop-up will appear to alert you that you are about to change instrument settings. Click **OK** to clear this window and proceed.



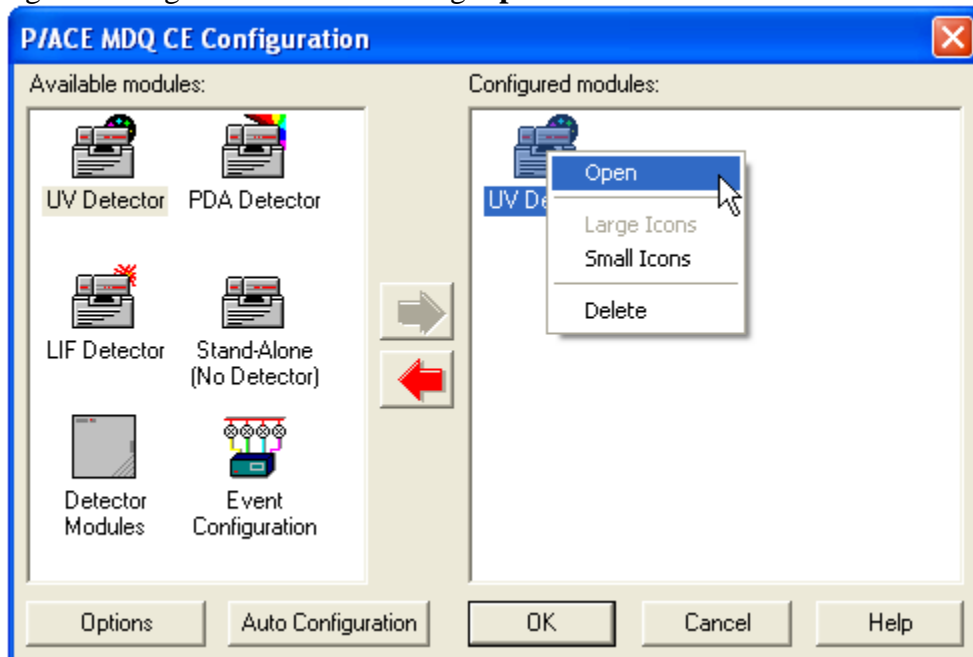
Click on the **Configure** button.



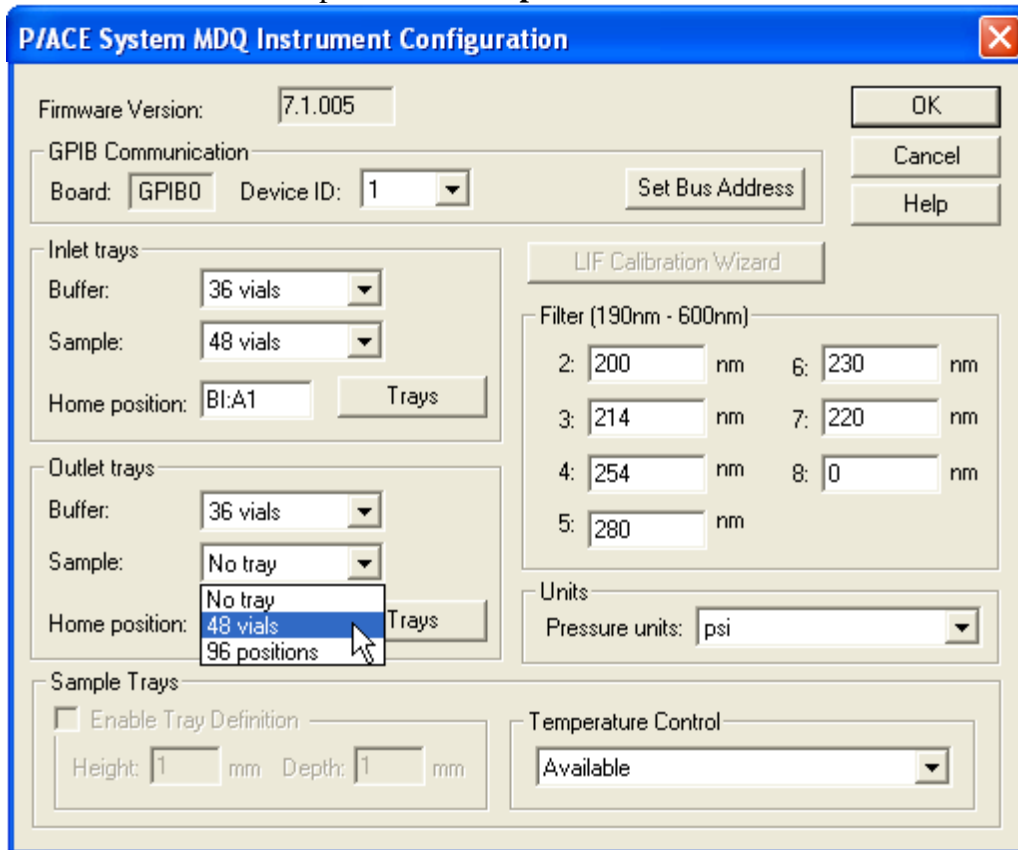
Select the UV detector from the **Available modules** pane and click the green arrow to move the detector icon to the **Configured modules** pane.



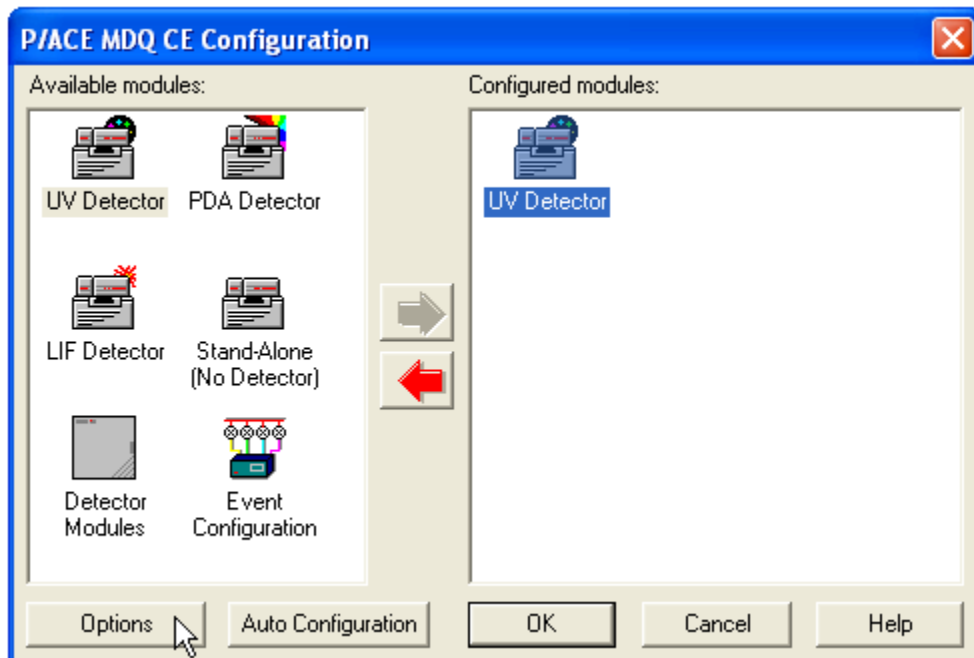
Open the UV detector configuration window by double-clicking the UV detector icon or by right-clicking the icon and selecting **Open**.



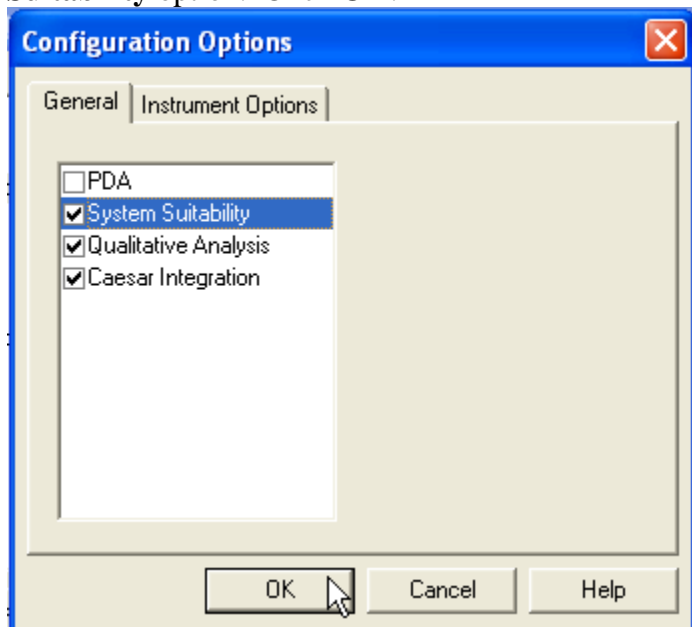
Select **48 vials** from the pull-down **Sample** menu for both the Inlet and Outlet trays. Click **OK**.



Upon clicking the **OK** button on the P/ACE System MDQ Instrument Configuration window, you will be returned to the P/ACE MDQ CE Configuration window. Click the **Options** button in the lower left of the window.



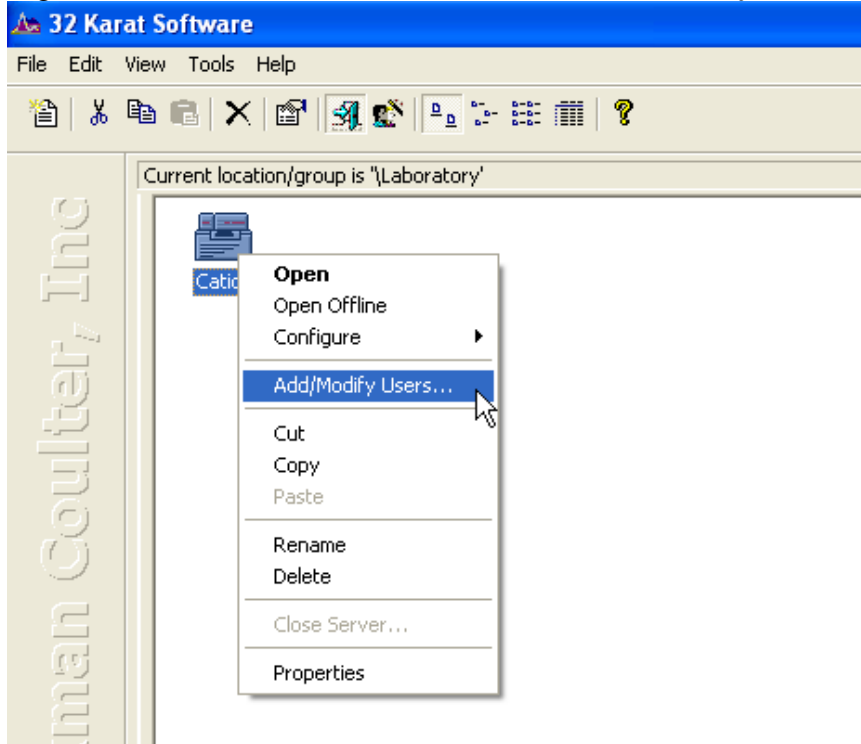
The **Configuration Options** window will open. Choose the **General** tab and select the **System Suitability** option. Click **OK**.



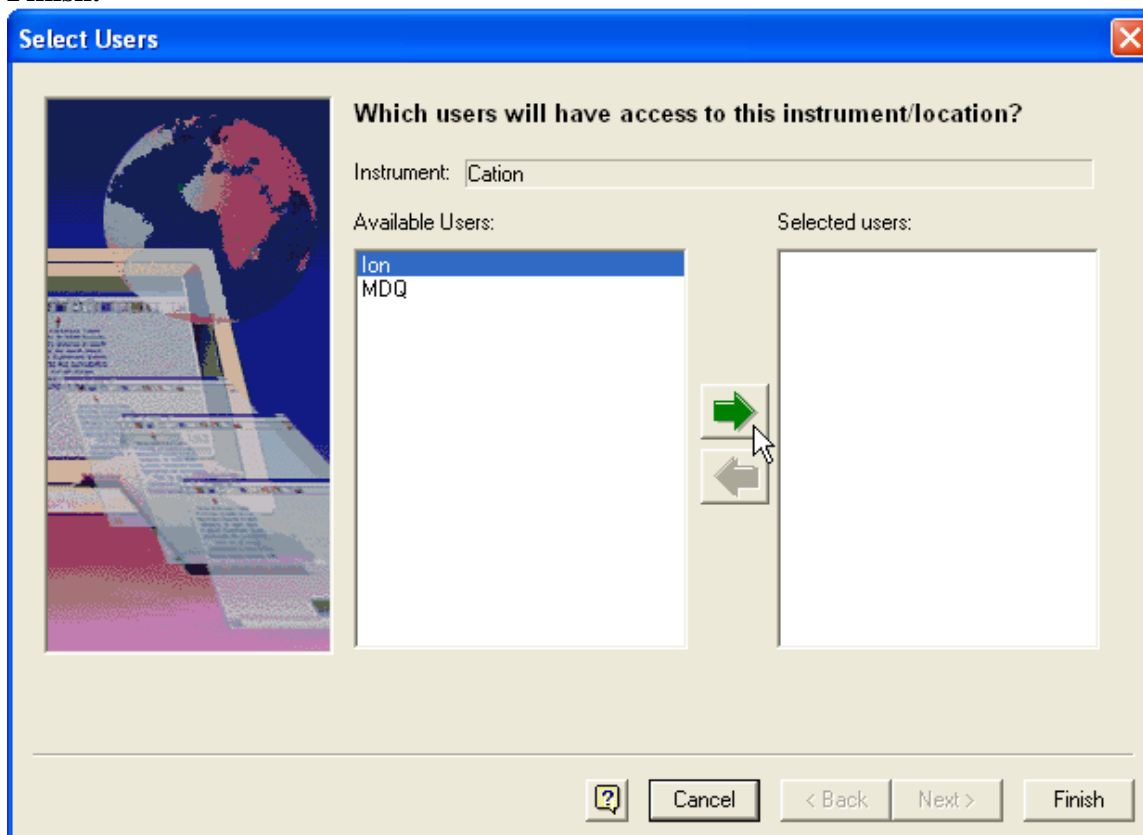
To accept the configuration click **OK** to step back through the configuration screens.

*Note: After making your selections do not simply close out the configuration windows. The **OK** button must be clicked on each of the screens for the configuration to be properly stored.*

Right click on the instrument icon and select **Add/Modify Users**.

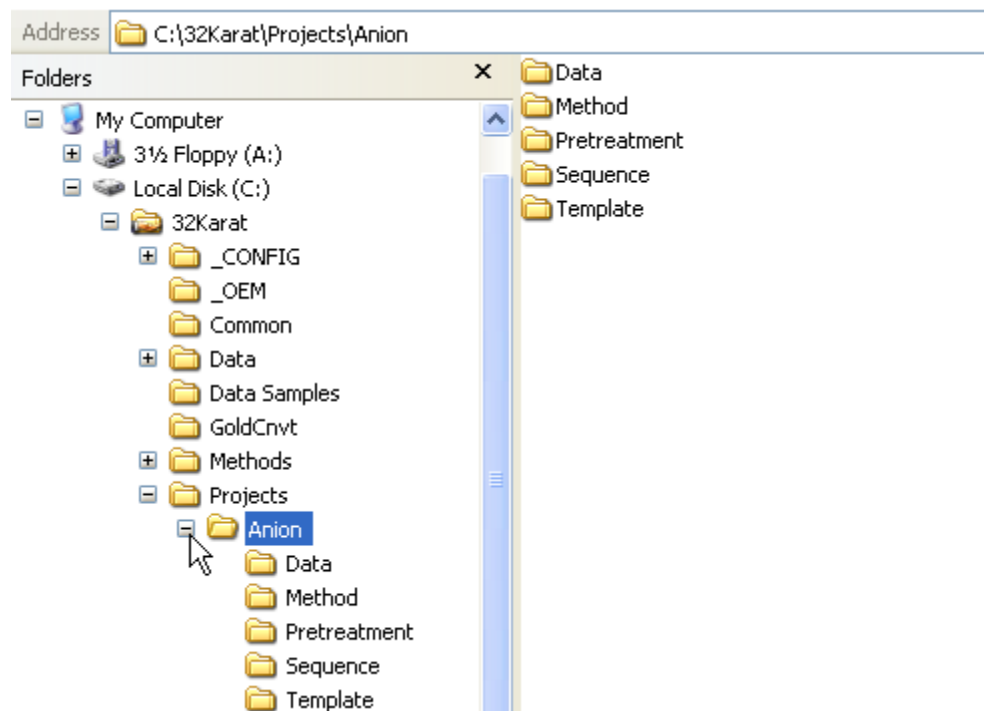


Select the users who will have access to this instrument from the **Available Users** pane on the left and move them to the **Selected users** pane on the right by clicking the green arrow. Click **Finish**.



### ***Copy 32 Karat download files to Cation Project Folder***

The default path for projects created in 32 Karat Software is C:\32Karat\Projects. Navigate to the **Projects** folder and open the **Cation** folder. The folder will contain five subfolders entitled “Data”, “Method”, “Pretreatment”, “Sequence” and “Template”. Copy the downloaded data files to the Cation “Data” folder. Likewise copy the downloaded method and sequence files to the Cation “Method” and “Sequence” folders respectively.



32 Karat is now configured for use with the download files. See the Cation Analysis User’s Guide (Part Number: A49109 AB) for more information.

### **Useful links**

CE Expert download: <http://www.beckman.com/resourcecenter/labresources/ce/expert.asp>

PACE Setter newsletter: <http://www.beckman.com/resourcecenter/labresources/ce/pacesetr.asp>

Beckman Coulter home page: <http://www.beckmancoulter.com/Default.asp?bhfv=7>

Certificates of Analysis:

[http://www.beckmancoulter.com/customersupport/CofA/cert\\_analysis.asp](http://www.beckmancoulter.com/customersupport/CofA/cert_analysis.asp)

Product declarations/certificates:

<http://www.beckmancoulter.com/customersupport/dc/dcreresult.asp?inpProdNumber=33219>

BCI products: [http://www.beckmancoulter.com/eCatalog/Catalog/Capillary\\_Electrophoresis](http://www.beckmancoulter.com/eCatalog/Catalog/Capillary_Electrophoresis)

BCI global contact information:

[http://www.beckmancoulter.com/hr/contactus/contact\\_us\\_main.asp](http://www.beckmancoulter.com/hr/contactus/contact_us_main.asp)