



## Break Your Case Backlog with LC-MS/MS

Trade in Your GC/MS System Today. Streamline Laboratory Operations with LC-MS/MS

When your lab is faced with lots of samples and impending deadlines, you can't afford an unreliable mass spec system that could put your lab or your reputation at risk. Some mass spec solutions can crack when faced with pressure:

- Data quality erodes during long runs
- Data processing is time consuming and becomes a bottleneck
- Getting immediate answers to solve problems as they arise is impossible

Challenges like these can be detrimental to your lab's productivity. The SCIEX Triple Quad™ 3500 mass spectrometer system enables the analysis of more compounds in every injection, lower quantitation limits, and increased sample volume and throughput productivity over conventional GC/MS.

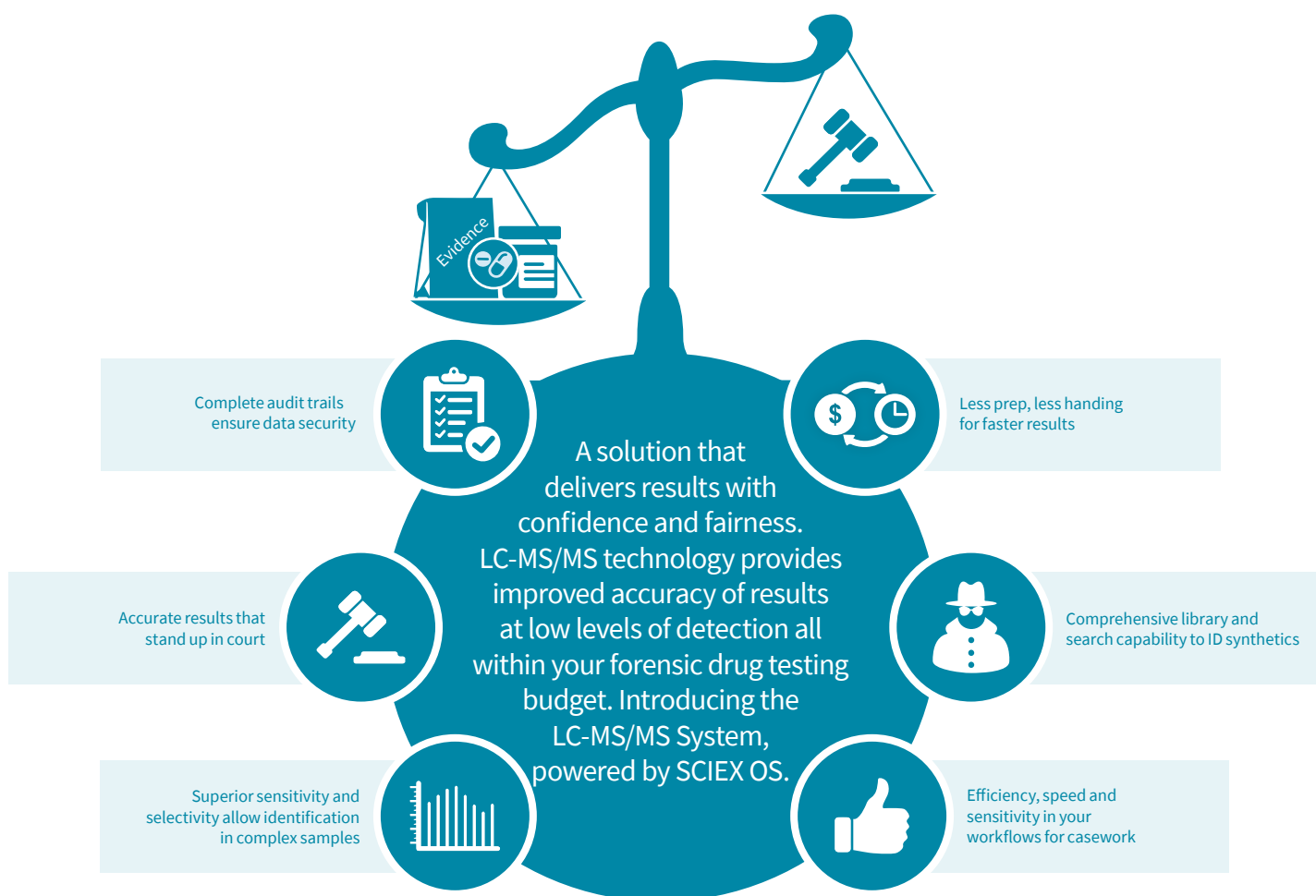


**Moving to LC/MS-MS will enable you to analyze acidic, neutral and basic drugs in one shot**

**Robust quantitation and performance guaranteed**



# LC/MS-MS will enable your laboratory technician to deliver you case results quicker by making their routine work more efficient



## All within your technology budget



Implementing new LC-MS/MS technology does not need to be complex or expensive. Designed for laboratories with limited capital equipment budget, the SCIEX Forensic Program is a flexible, affordable way for you to accelerate your methods and accomplish your goals. Contact us for alternative ownership options including spreading the costs with rental or leasing through our partner EVOSCIENCES. Toll free number: 00800 2255 2279

# EVOSCIENCES