



Run glycans up to 2x faster than HILIC

HIGH-RESOLUTION ANALYSIS AND ID IN MINUTES



High-Resolution Glycan Identification and Quantitation in Minutes

Run Your Glycans in Record Time

- Reproducibility and repeatability 2x better than HILIC
- Cost-effective technology
- Immediate glycan identification

Glycan Analysis Matters

Incorrect glycan species associated with a biologic, such as a monoclonal antibody (mAb), can lead to an increase and / or decrease in antibody-dependent cellular cytotoxicity (ADCC) or complement-dependent cytotoxicity (CDC).

Lack of high resolution glycan information – for example, the identification of the presence and quantification of fucosylated and non-fucosylated structures – can put patients and your organization at considerable risk.

Obtaining High Resolution Glycan Analysis Has Traditionally Required Patience

	HILIC UHPLC	SCIEX Fast Glycan CE
Sample Prep	30-minutes to 24-hours	1-hour
Separation Time	17- to 45-minutes	5- to 20-minutes
Immediate ID	—	✓

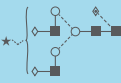
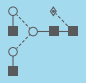

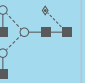
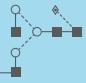

Glycan analysis has traditionally required a lengthy sample preparation process, a long separation, and time-consuming data analysis. Combining the 1-hour SCIEX glycan sample prep* and the high resolving power of SCIEX CE with immediate GU-based glycan identification, is leaving traditions to the past.

* Including PNGase F digestion, labeling, removal of excess dye that may interfere with resolution of some glycan species. SCIEX glycan sample preparation is amenable to automation (i.e. with Beckman Coulter Biomek liquid handlers).

Immediate and Highly-Repeatable Glycan Identification

Automated and highly-reproducible, glucose unit (GU) calculations are performed on aligned data directly in the PA 800 Plus software. The GU reference table supplied can be used 'as is' or can be customized by adding glycan species to meet your library needs.

GU Value

Glycan ID	DP3	FA2G2S1	FA2	FA2B	FA2(6)G1	FA2(3)G1	FA2G2
Monoisotopic mass	—	2077.75	1462.54	1665.62	1624.6	1624.6	1868.7
Glycan Structure	—						
Sample 1	3000	6.842	7.752	8.296	8.837	9.182	10.221
Sample 2	3000	6.848	7.757	8.302	8.843	9.188	10.225
Sample 3	3000	6.848	7.763	8.302	8.843	9.188	10.229
Sample 4	3000	6.853	7.763	8.302	8.843	9.193	10.229
Sample 5	3000	6.853	7.763	8.308	8.848	9.193	10.234
Sample 6	3000	6.831	7.742	8.279	8.817	9.163	10.209
Sample 7	3000	6.831	7.742	8.279	8.817	9.168	10.207
Sample 8	3000	6.853	7.769	8.308	8.848	9.199	10.233
%RSD*		0.131	0.143	0.143	0.150	0.142	

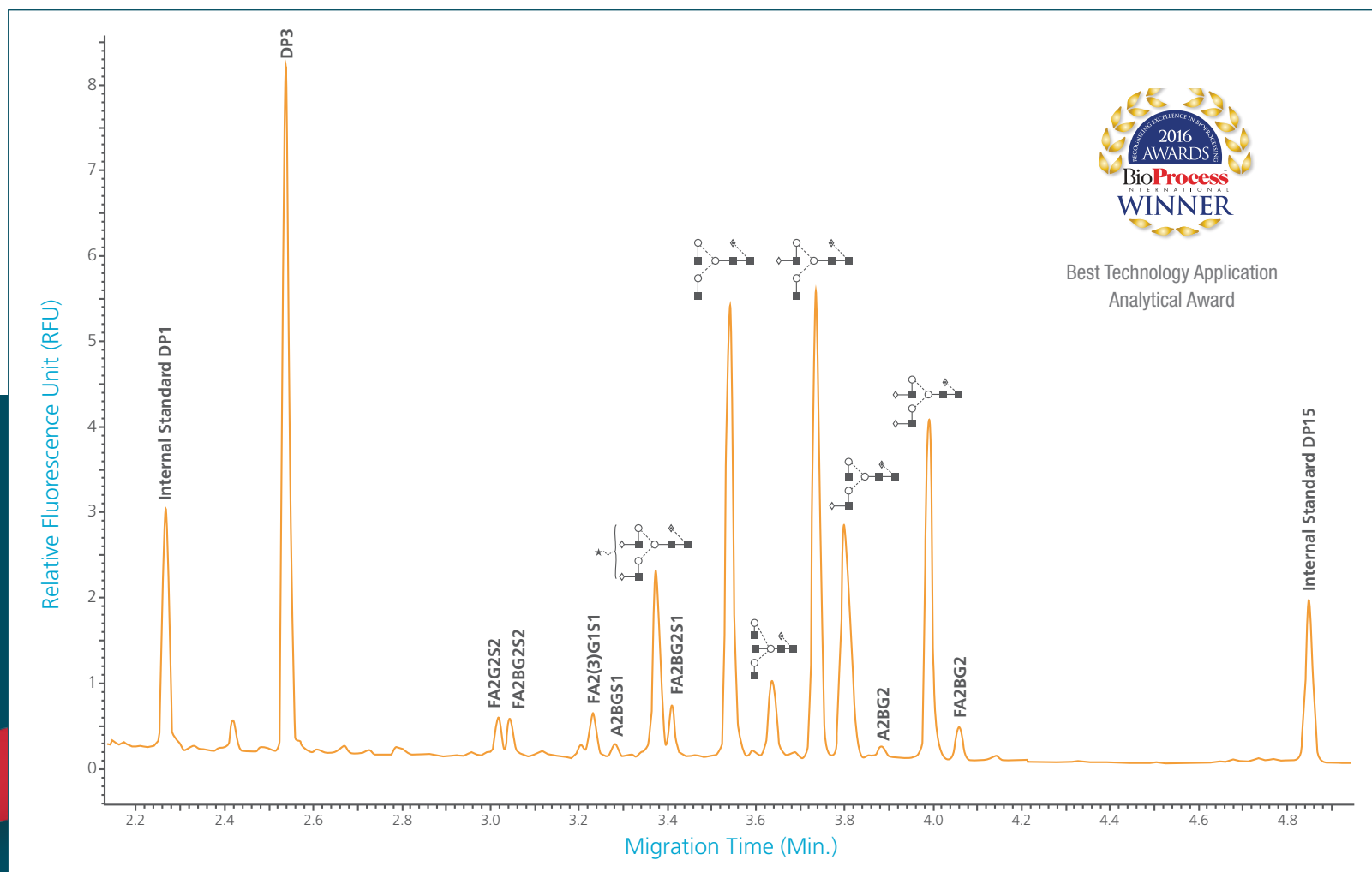


- Glycan ID
- Monoisotopic mass
- Glycan structure

* % RSD based on 16 samples run

Make Confident Decisions Faster

The **SCIEX PA 800 Plus – Fast Glycan Labeling and Analysis Report** includes high resolution electropherogram and GU value information along with glycan structural data for identification. This means you can characterize **more samples in less time** for quicker comparability assessments across a population of samples. You can also minimize the cycle time needed to course correct processes, from development to commercial manufacturing.





Best Technology
Application Analytical
Award




The SCIEX Fast Glycan Analysis Kit (Part Number B94499PTO)

The kit comes with the reagents necessary to perform the assay. Contents include sample preparation beads, magnetic separator, labeling reagent, separation gel reagent and internal GU standard.*

Kit shipment includes pre-assembled cartridge (Part Number A55625) for your convenience and ease-of-use.

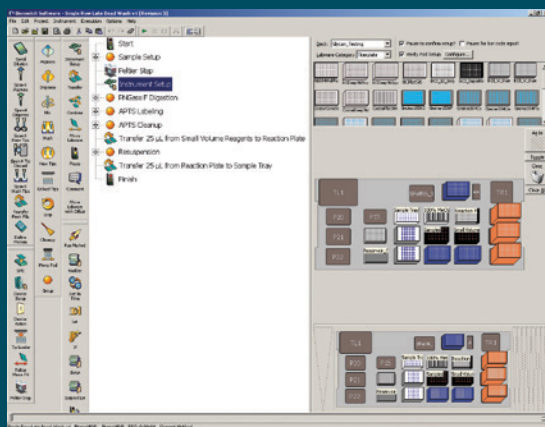
* Sodium Cyanoborohydride and PNGase F are not included.



Easily prep
directly in
PA 800 Plus
Sample Tray

Automation

The SCIEX fast glycan method sample preparation can be automated using liquid handlers like the Beckman Coulter workstation, eliminating potential operator error and further increasing your laboratory's efficiency.



Your Success is Our Success

We take it personally

As a SCIEX customer you have access to a world-class customer support organization. Wherever you are, we're there with you as a trusted partner to answer questions, provide solutions, and maximize lab productivity.

Our customer support organization has access to the latest product updates, software revisions, methods and repair procedures to make sure that you stay on top of your game.

When you have questions, we have answers.

Learn more at sciex.com/customersupport, or locate your local account representative at sciex.com/contactus

Answers for Science.

Knowledge for Life.™

For Research Use Only. Not for use in diagnostic procedures.

AB Sciex is doing business as SCIEX.

© 2019 AB Sciex. The trademarks mentioned herein are the property of AB Sciex Pte. Ltd. or their respective owners. AB SCIEX™ is being used under license.

RUO-MKT-03-4697-E 05/2019

Headquarters

500 Old Connecticut Path
Framingham, MA 01701 USA
Phone 508-383-7700
sciex.com

International Sales

For our office locations please call the division headquarters or refer to our website at sciex.com/offices

