

An Affordable Mass Spec Solution from SCIEX

to Expand Your Labs Potential with LC-MS/MS

It's time to get the best quality data you can from your samples and grow your lab's capability with an introductory SCIEX Triple Quad™ System.

1 **Worthwhile investment**

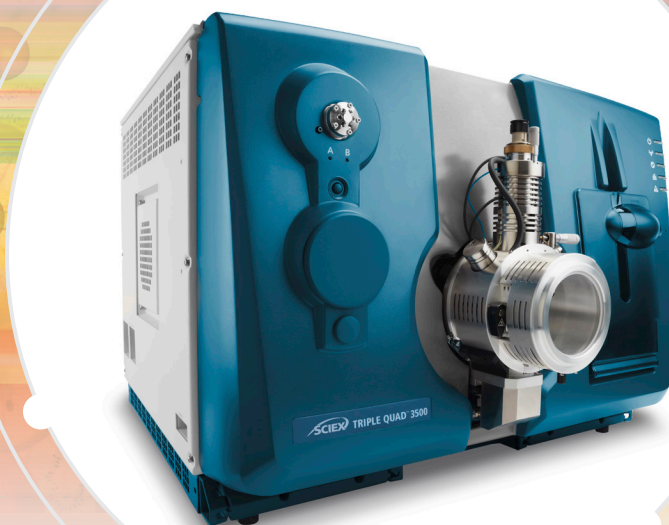
Enormous ROI potential

LC-MS/MS expands your lab's portfolio of tests. Due to the ease of use and dedicated support and training, you will be up and running quickly delivering extra valued analysis to new and existing customers.

2 **See your analytes with confidence**

Accuracy and speed combined

The unique scan functions of LC-MS/MS enable you to see the qualifying components of your compound of interest, so you can quantify and rapidly report to regulatory standards with more accuracy and confidence than you can achieve with HPLC.



3 **More compounds, more samples, and less time**

Expand your labs offerings

LC-MS/MS enables you to combine laborious workflows associated with HPLC and put them into one suite without compromising data quality or expensive staffing. By employing LC-MS/MS you can grow your lab, offer more services and stay ahead of your competition.

4 **Get more data even in tough matrix**

See what your HPLC assay can't

With LC-MS/MS the matrix doesn't get in the way of the data. Our mass spectrometers are engineered to handle the most complex food matrices, you get highly accurate results, injection after injection with maximum uptime. See more, test more and earn more.

SCIEX Mass Spectrometry
Better accuracy. Superior confidence. Unrivalled speed.