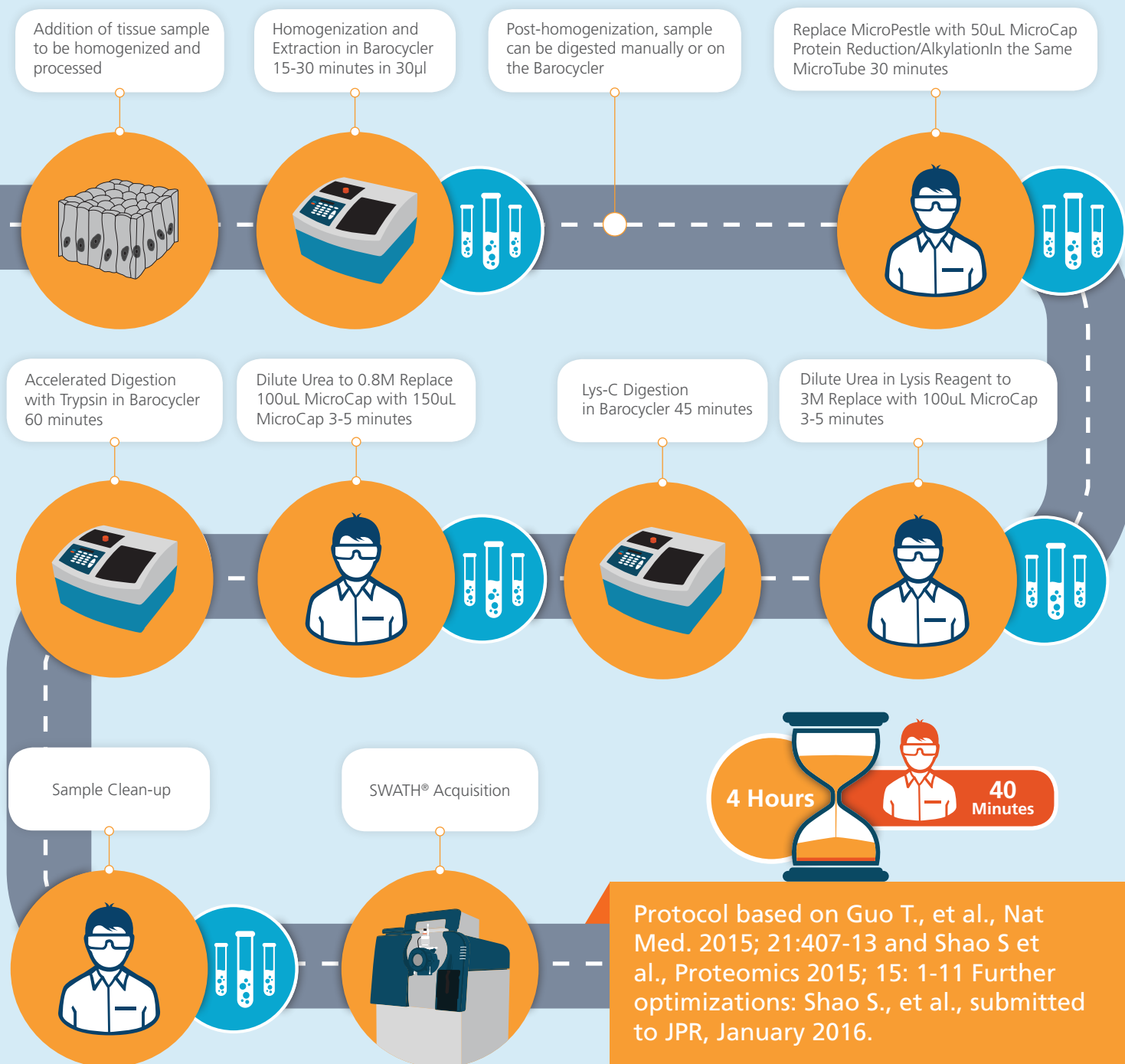


# PCT-SWATH™ for Protein Quantitation: Tissue to Peptides in 4 Hours

The method takes less than 40 minutes of hands-on operator time and is completed in about 4 hours, including a post-digestion sample clean-up step. Up to 16 samples are being processed in a single batch per instrument. Two batches per instrument can be easily accomplished per shift.



Protocol based on Guo T., et al., Nat Med. 2015; 21:407-13 and Shao S et al., Proteomics 2015; 15: 1-11 Further optimizations: Shao S., et al., submitted to JPR, January 2016.