



MPX™ Driver 1.2.1 HotFix to February 2016

Release Notes



This document is provided to customers who have purchased SCIEX equipment to use in the operation of such SCIEX equipment. This document is copyright protected and any reproduction of this document or any part of this document is strictly prohibited, except as SCIEX may authorize in writing.

Software that may be described in this document is furnished under a license agreement. It is against the law to copy, modify, or distribute the software on any medium, except as specifically allowed in the license agreement. Furthermore, the license agreement may prohibit the software from being disassembled, reverse engineered, or decompiled for any purpose. Warranties are as stated therein.

Portions of this document may make reference to other manufacturers and/or their products, which may contain parts whose names are registered as trademarks and/or function as trademarks of their respective owners. Any such use is intended only to designate those manufacturers' products as supplied by SCIEX for incorporation into its equipment and does not imply any right and/or license to use or permit others to use such manufacturers' and/or their product names as trademarks.

SCIEX warranties are limited to those express warranties provided at the time of sale or license of its products and are SCIEX's sole and exclusive representations, warranties, and obligations. SCIEX makes no other warranty of any kind whatsoever, expressed or implied, including without limitation, warranties of merchantability or fitness for a particular purpose, whether arising from a statute or otherwise in law or from a course of dealing or usage of trade, all of which are expressly disclaimed, and assumes no responsibility or contingent liability, including indirect or consequential damages, for any use by the purchaser or for any adverse circumstances arising therefrom.

For research use only. Not for use in diagnostic procedures.

AB Sciex is doing business as SCIEX.

The trademarks mentioned herein are the property of AB Sciex Pte. Ltd. or their respective owners.

AB SCIEX™ is being used under license.

© 2016 AB Sciex



AB Sciex Pte. Ltd.
Blk 33, #04-06
Marsiling Ind Estate Road 3
Woodlands Central Indus. Estate.
SINGAPORE 739256

Contents

MPX™ Driver Software 1.2.1 HotFix to February 2016.....	4
New Features and Changes.....	4
Install the HotFix.....	5
Updated Files.....	6
Known Issues.....	7
Remove the HotFix.....	7
Support.....	8
Contact Us.....	8
Technical Support.....	8
Appendix A Set the Computer Language to English (United States).....	9
Appendix B Stop the Services.....	10
Revision History.....	11

MPX™ Driver Software 1.2.1

HotFix to February 2016

New Features and Changes

Note: The numbers in brackets are reference numbers to each issue or feature in the SCIEX internal tracking system.

- The changes included in the MPX™ Driver 1.2.1 Patch for CTC 5mL Syringe that was distributed to users of the MPX™ driver software version 1.2.1 installed on a system configured with a CTC PAL autosampler have been incorporated into this HotFix. (MPX-4)
- A potential for wrong data existed when using the MPX™ driver software in conjunction with the Analyst® software. If the user submitted a batch of samples using two different plate types or different injection volumes and then deleted a non-acquired sample from the Analyst® software queue, it was possible that the data from the deleted sample might be associated with the next sample in the queue. This issue has been fixed. (MPX-41)
- Using the Method Editor, the MPX™ driver software methods that were created using version 1.2 of the software or earlier versions were automatically converted without providing any indication to the user. This issue has been fixed. The user is now shown an information dialog, indicating that the conversion will occur and the method should be saved. If the user closes the method without saving it, then the method is not updated. (MPX-45)
- When the Injection Volume, Stream Number, and Plate Code values were added to the Comments column of the Sample table in the Analyst® software Batch Editor in the format: Injection Volume:10; Stream Number:2; Plate Code:2xVT54, the values in the method were incorrectly overwritten with these values. This issue has been fixed. (MPX-46)
- The size of the following log files has been increased to capture information for a longer period of time: (MPX-47)
 - The size of the MPX Device Server Log has been increased from 5.0 MB to 300.0 MB.
 - The size of the Multiplex Log has been increased from 50.0 MB to 2.00 GB.
 - The size of the Multiplex UI Log has been increased from 50.0 MB to 400.0 MB.
- If the Analyst® Access Object (AAO) and the MPX™ driver software acquisition-related events were not synchronized, then the MPX™ driver software was not aborting the sample being acquired. This issue has been fixed. (MPX-48)
- Injecting a sample from a side vial (Control Rack) of a Shimadzu autosampler is now supported. (MPX-51)

Install the HotFix

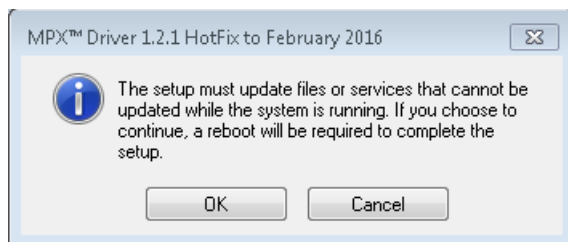
Note: The same user account that was used to install the Analyst® software and the MPX™ driver software, version 1.2.1, should be used to install the MPX Driver 1.2.1 HotFix to February 2016.

1. Log on to the computer as a user with Administrator privileges.
 2. Make sure that the computer language is set to **English (United States)**. Refer to [Set the Computer Language to English \(United States\)](#) on page 9.
 3. Open the Analyst® software and then deactivate the hardware profile.
 4. Close the Analyst® software.
 5. Stop the **AnalystService** and the **MPXDriverSoftware service**. Refer to [Stop the Services](#) on page 10.
 6. Download the **MPX 1.2.1 HotFix to February 2016** from sciex.com/software-downloads-x2110.
-

Note: To prevent potential installation issues, we recommend that the file be saved to a location other than the computer desktop.

7. After the download is complete, right-click the **MPXHotFix121-WebRelease.zip** file.
8. Click **Extract All** and then select the file destination folder.
9. After the extraction is complete, navigate to the selected extraction folder and double-click the **MPX 1.2.1 HotFix to February 2016.exe** file.
10. If the User Account Control dialog opens, then click **Yes** to dismiss the message.
11. If the following dialog opens, then click **OK** to continue.

Figure 1 MPX Driver 1.2.1 HotFix to February 2016 Message Dialog



12. Follow the on-screen instructions to complete the installation.

MPX™ Driver Software 1.2.1 HotFix to February 2016

Note: During the installation, if the MPX™ Driver 1.2.1 Patch for CTC 5mL Syringe is already installed on the system, then two additional messages are shown. These messages must be acknowledged to continue with the installation.

13. After the installation is complete, browse to the list of installed **Programs** using **Start > Control Panel** function and make sure that **MPX Driver 1.2.1 HotFix to February 2016** is shown.
14. Restart the computer.
15. Open the Analyst® software and then activate the hardware profile.
16. Using the MPX™ driver software Method Editor, open an LC method that was created using the MPX™ driver software, version 1.2 or earlier.
17. Save the method using the **Save As** option.

Note: If a batch is run using a version 1.2 or earlier method that was not re-saved, then the batch fails.

18. Repeat steps 16 and 17 for each version 1.2 or earlier LC method.

Updated Files

All Configurations

The following file is added during the installation in the C:\ProgramData\AB SCIEX\MPX Driver\Config folder:

- LoggingUI.config

The following file is updated during the installation in the C:\ProgramData\AB SCIEX\MPX Driver\Config folder:

- Logging.config

The following file is added during the installation in the C:\Program Files (x86)\AB SCIEX\MPX Driver\Bin folder:

- AnalystAuditTrail.dll

The following files are updated during the installation in the C:\Program Files (x86)\AB SCIEX\MPX Driver\Bin folder:

- CFR_Checksum Validation.Log
- MPX.Config.dll
- MPX.Core.dll
- MPX.LCController.dll
- MPX.Service.exe
- MPX.UI.exe

- MPX.Utility.dll

The following files are updated during the installation in the C:\Program Files (x86)\AB SCIEX\MPX Driver\Bin\Device Driver folder:

- MPX Driver Diagnostics.exe
- Multiplex Device Interface.dll
- Multiplex Device Server.exe

For Standard CTC Configurations

The following files are added during the installation in the C:\ProgramData\AB SCIEX\MPX Driver\CTC folder:

- Stream_1_Method_5000_STD.pmx
- Stream_2_Method_5000_STD.pmx

The following file is updated during the installation in the C:\ProgramData\AB SCIEX\MPX Driver\CTC folder:

- WashOptions_STD.xml

The following file is updated during the installation in the C:\ProgramData\AB SCIEX\MPX Driver\Config folder:

- WashOptions.xml

For Standard DLW (Dynamic Load and Wash) Configurations

The following files are added during the installation in the C:\ProgramData\AB SCIEX\MPX Driver\CTC folder:

- Stream_1_Method_5000_STD.pmx
- Stream_2_Method_5000_STD.pmx

The following file is updated during the installation in the C:\ProgramData\AB SCIEX\MPX Driver\CTC folder:

- WashOptions_STD.xml

Known Issues

No additional issues have been introduced with this HotFix. Refer to the **Known Issues and Limitations** section of the MPX™ Driver Software version 1.2.1 *Release Notes* for a list of the existing issues.

Remove the HotFix

1. Log on to the computer as a user with Administrator privileges.
2. Deactivate the hardware profile and then close the Analyst® software.
3. Browse to the list of installed **Programs** using the **Start > Control Panel** function and then click **MPX Driver 1.2.1 HotFix to February 2016**.

MPX™ Driver Software 1.2.1 HotFix to February 2016

4. Do one of the following:

- For computers configured with Microsoft Windows XP, click **Remove**.
- For computers configured with Microsoft Windows 7, click **Uninstall**.

5. Follow the on-screen instructions.

The **MPX Driver 1.2.1 HotFix to February 2016** is removed from the list of installed **Programs**.

Support

Contact Us

SCIEX Support

- sciex.com/contact-us
- sciex.com/request-support

Customer Training

- In North America: NA.CustomerTraining@sciex.com
- In Europe: Europe.CustomerTraining@sciex.com
- Outside the EU and North America, visit sciex.com/education for contact information.

Online Learning Center

- training.sciex.com

Technical Support

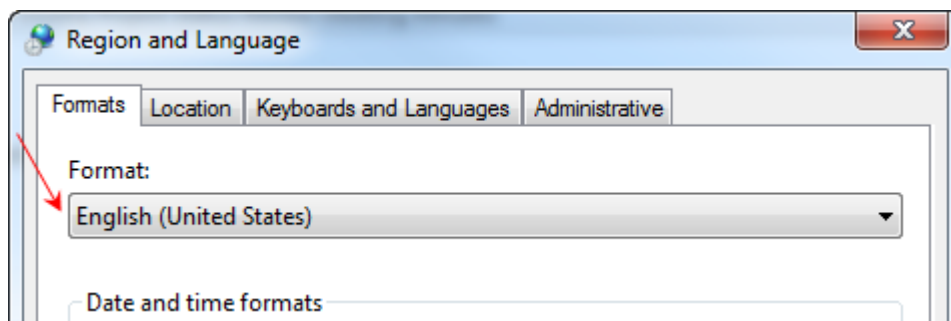
SCIEX and its representatives maintain a staff of fully-trained service and technical specialists located throughout the world. They can answer questions about the system or any technical issues that might arise. For more information, visit the Web site at sciex.com.

Set the Computer Language to English (United States)

A

1. Click **Start > Control Panel**.
2. Do one of the following:
 - If the Control Panel is configured with the Category view, then click **Clock, Language, and Region > Regional and Language**.
 - If the Control Panel is configured with the Large or Small icon view, then click **Region and Language**. The Regional and Language dialog opens.
3. On the **Formats** tab, make sure that the **Format** field is set to **English (United States)**.

Figure A-1 Region and Language Dialog



4. Click **Apply** and then click **Close**.

Stop the Services

B

1. Click **Start > Control Panel**.
2. Do one of the following:
 - If the Control Panel is configured with the Category view, then click **System and Security > Administrative Tools**.
 - If the Control Panel is configured with the Large or Small icon view, then click **Administrative Tools**.
3. Double-click **Services**.
The Services dialog opens.
4. Right-click **AnalystService** and then click **Stop**.
5. Close the Services dialog.

Revision History

Revision	Reason for Change	Date
A	First release of document.	February 2016
B	Added information related to saving all LC methods created using the MPX™ driver software, version 1.2.1 and earlier, using the Save As option in the Method Editor.	April 2016