

# LipidView™ 1.2 Software

## *Release Notes*



This document is provided to customers who have purchased AB Sciex equipment to use in the operation of such AB Sciex equipment. This document is copyright protected and any reproduction of this document or any part of this document is strictly prohibited, except as AB Sciex may authorize in writing.

Software that may be described in this document is furnished under a license agreement. It is against the law to copy, modify, or distribute the software on any medium, except as specifically allowed in the license agreement. Furthermore, the license agreement may prohibit the software from being disassembled, reverse engineered, or decompiled for any purpose.

Portions of this document may make reference to other manufacturers and/or their products, which may contain parts whose names are registered as trademarks and/or function as trademarks of their respective owners. Any such use is intended only to designate those manufacturers' products as supplied by AB Sciex for incorporation into its equipment and does not imply any right and/or license to use or permit others to use such manufacturers' and/or their product names as trademarks.

AB Sciex makes no warranties or representations as to the fitness of this equipment for any particular purpose and assumes no responsibility or contingent liability, including indirect or consequential damages, for any use to which the purchaser may put the equipment described herein, or for any adverse circumstances arising therefrom.

**For research use only. Not for use in diagnostic procedures.**

The trademarks mentioned herein are the property of AB Sciex Pte. Ltd. or their respective owners.  
AB SCIEX™ is being used under license.



AB SCIEX  
71 Four Valley Dr., Concord, Ontario, Canada. L4K 4V8.  
AB SCIEX LP is ISO 9001 registered.  
© 2012 AB SCIEX.  
Printed in Canada.

<b>Release Notes</b> .....	<b>5</b>
New Features and Changes from Version 1.1 to Version 1.2 .....	.5
New Features and Changes from Version 1.0 to Version 1.1 .....	.5
Other Documentation .....	.5
Support .....	.5
Requirements .....	.6
Installation .....	.6
Upgrade .....	.6
Activation .....	.7
Known Issues and Limitations .....	.8



This document describes the LipidView™ Software version 1.2, an Analyst® software add-on application for finding, identifying, and quantifying lipids in data collected from the following AB SCIEX systems: QTRAP®, triple quadrupole, QSTAR®, or TripleTOF® systems.

## New Features and Changes from Version 1.1 to Version 1.2

- Full support for the new 4500, 4600, and 6500 series of mass spectrometers.
- Improvements to LC/MS/MS acquisition processing and data review with direct access to the PeakView® 1.2 software.
- Ability to export LipidView software methods to suitable formats for use on other platforms from AB SCIEX using the LipidView Method Exporter.
- Compatibility with the MS/MS<sup>ALL</sup> with SWATH™ acquisition workflow.

## New Features and Changes from Version 1.0 to Version 1.1

- LipidView™ software has been rebranded to reflect the new AB SCIEX corporate identity. Changes related to the software vendor information, product branding, and copyright information are introduced in this version.
- Data files acquired using the TripleTOF® 5600 system can be processed using the LipidView 1.1 software.
- Analyst® QS software is not supported with this release. However QSTAR® system customers can install Analyst TF 1.5 software on a processing computer and process QS data using LipidView 1.1 software and Analyst TF 1.5 software.
- A number of enhancements have been included in this version of the software, including but not limited to the following:
  - Improved support of LC data processing.
  - Ability to perform concurrent reviews of MS and MS/MS data for Information Dependent Acquisition (IDA) data when the LipidView software is installed with the Analyst TF 1.5 software.

## Other Documentation

- *LipidView™ 1.2 Software Getting Started Guide*
- *LipidView™ 1.2 Software User Guide*

## Support

- [support@absciex.com](mailto:support@absciex.com)
- [www.absciex.com](http://www.absciex.com)
- Customer Documentation: [techpubs@absciex.com](mailto:techpubs@absciex.com)

## Requirements

- Read these release notes.
- The user installing and licensing the software must have Administrator privileges on the installation computer. Contact the IT group to make sure the access rights are correct.
- Internet access is required to obtain a license for the software.
- The system requirements are those of Analyst® 1.6 software and Analyst TF 1.5 software.
- The following software is required to install the LipidView software:
  - .NET framework 4.0 or higher.
  - Analyst software version 1.6 or higher or Analyst TF software version 1.5 or higher.
  - Microsoft Word 2003 or higher is needed to support reporting functionality.
  - Microsoft Access is not essential. However, it is required for customizing information in the lipid database.
- On computers with automated file encryption, install the LipidView Data folder in a location where encryption is not activated.

## Installation

1. Log on to the computer as a Windows user with Administrator privileges.
2. Insert the installation DVD into the computer.



**Note:** If .NET Framework 4.0 or higher is not installed on the computer, the Setup dialog opens. The installer automatically installs .NET Framework 4.0. After the .NET Framework is installed, the Setup dialog closes.

The LipidView™ 1.2 InstallShield Wizard dialog opens.



**Tip!** If the installation wizard does not launch automatically, browse to the DVD and then double-click **setup.exe**.

3. Follow the installation wizard instructions.  
The installation wizard installs any required software and then installs the LipidView software.

## Upgrade

1. Follow the [Installation](#) procedure to upgrade a previous version of the LipidView software (version 1.0 or 1.1) to version 1.2.



**Note:** The installer removes any existing version of the LipidView software before installing version 1.2. The LipidView software database and the MS/MS fragment files are copied to the Program Files\LipidViewbackup folder. After the installation is complete, the previous version of the database and files can be merged with the installed version.

2. Use the MergeLVDB application (**MergeLVDB.exe**), located in the **Program Files\AB SCIEX\LipidView Software** folder to merge any existing custom internal standards, custom ion types, and fragments with the new LipidView database.

## Activation



**Note:** Internet access is required to obtain a license for the software. If the computer where the LipidView software is being installed does not have Internet access, make a copy of the computer ID. On a computer with Internet access, go to <http://licensing.absciex.com/activation/lipidview> and follow the instructions to obtain a license.



**Note:** The LipidView software must be activated by a user with Administrator privileges.

1. Right-click the LipidView desktop icon and then do one of the following:
  - For Windows XP, click **Run as** and then select an administrative user.
  - For Windows 7, click **Run as administrator**.
2. On the LipidView Software Activation dialog, click **Copy ID to Clipboard**.
3. Click the <http://licensing.absciex.com/activation/lipidview> link.
4. Follow the instructions to obtain a license.



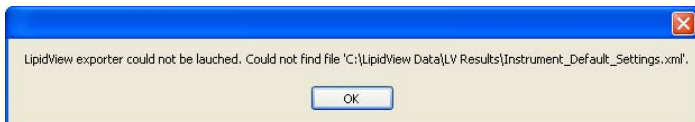
**Note:** The license key is available on the license certificate, found in the LipidView software installation package.

After the required information is submitted, a license file is sent to all e-mail addresses provided.

5. Close the browser window.
6. When the e-mail containing the license file is received, copy the license to the workstation desktop.
7. If required, repeat step 1 to open the **LipidView Software Activation** dialog.
8. On the **LipidView Software Activation** dialog, click **Install License File**.
9. On the **Select the new license file to be installed** dialog, browse to and then select the license file.
10. Click **Open**.
11. On the LipidView Software Activation dialog, click **OK**.  
The LipidView software opens.

## Known Issues and Limitations

- (LV-7) When the LipidView software starts to process the batch data, do not open Microsoft Word until the processing has completed. Opening Word while the LipidView software is processing data might interfere with the automated report preparation in the LipidView software, resulting in a corrupted active Word document.
- (LV-24) When exporting methods using the LipidView Method Exporter, if there is data loaded or if a previous Results File has been loaded, the following error message might be shown:



**Figure 1-1 LipidView software Method Exporter error message**

To resolve this issue, copy the **Instrument\_Default\_Settings.xml** file from the C:\Program Files\AB SCIEX\LipidView Software folder to the <Drive>:\LipidView Data\LV Results and the <Drive>:\LipidView Data\LV Sessions folders. This only has to be completed once. Alternatively, users can close and then open the LipidView software before using the LipidView Method Exporter.

- (LV-25) An incorrect TOF MS Mass tolerance default value of 0.4 might be shown when a user reviews the processing methods for QSTAR<sup>®</sup> or TripleTOF<sup>™</sup> system data. To resolve this issue, if any processing parameters for these methods are modified, the user should create a new method with the same name, update the TOF MS Mass tolerance and any other required settings, and then use Save or Save and close to store the updated settings.