

# Expert brief: CE-MS solutions enabling next-generation therapeutics

## Challenges for the discovery and development of next-generation biotherapeutics:

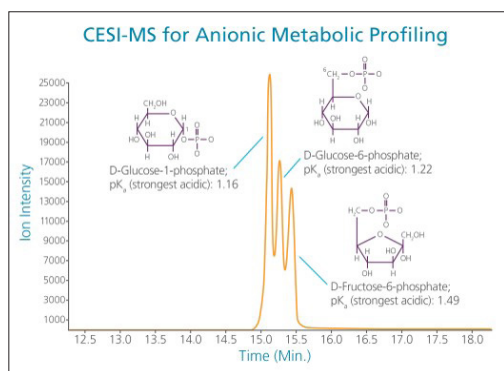
- Elucidating the metabolic or signaling pathways for new disease indications often requires sampling from only a few cells
- New types of protein therapeutics, oligonucleotide therapies, viral gene therapies and cell therapies keep expanding in their level of complexity and level of required characterization

In short, more types of biomolecules in smaller amounts must be analyzed in greater detail

### SCIEX CESI 8000 Plus ESI-MS System:

#### Maximum flexibility in the widest chemical space

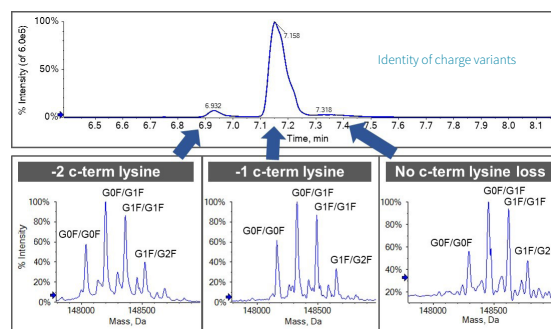
- Superior separation for a wide variety of biomolecules
- Ability to analyze compounds with positive or negative polarity
- Extended workflow flexibility in standalone mode



### 908 Devices ZipChip:

#### Turnkey analysis of proteins

- Easy-to-use kits for a variety of protein workflows
- Dependable online quantification and identification of protein charge variants



### Bottom line

SCIEX offers one of the widest selection of capillary electrophoresis–mass spectrometry (CE-MS) solutions to solve your most challenging questions from early discovery through development.