



Parts and supplies catalog

The ultimate guide for LC-MS/MS laboratories




The Power of Precision

2021 edition

Welcome

Whether you're using a SCIEX API, Triple Quad, QTRAP, TripleTOF, X500 series QTOF, capillary electrophoresis or ExionLC system, the parts and supplies you need to keep your instruments running at peak performance are within these pages.

You'll see  next to parts and supplies that we recommend keeping on hand to prevent workflow interruptions.

Why SCIEX original parts?

Only SCIEX original parts and supplies are guaranteed to work at the same level of performance as those that shipped with your instrument. SCIEX original parts are used by SCIEX-qualified service professionals, and they are of the highest quality available. Keep in mind that using non-SCIEX-certified parts can compromise the performance of your system. Plus, we support the parts we sell, so you can be confident that the part you use is the right part for the job. And if the part isn't right, we'll fix it or replace it. Third-party suppliers can't offer the same guarantee.

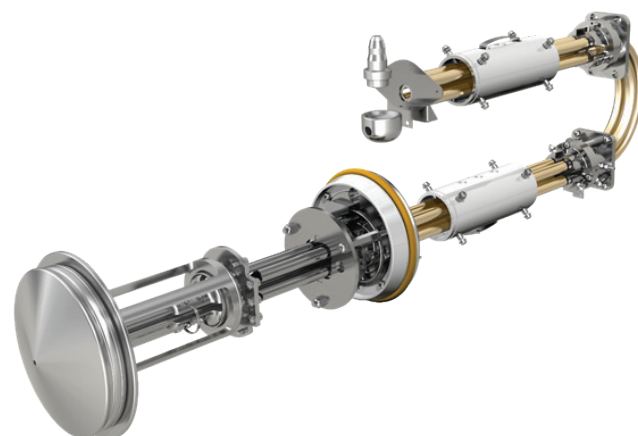
Why SCIEX service?

According to a recent poll,* SCIEX service is ranked #1 in customer satisfaction among mass spec vendors. What makes SCIEX service different is our deliberate focus on LC-MS and CE technology and workflows. No other service provider can offer the depth of knowledge and expertise in LC-MS and CE applications.

SCIEX service is part of the SCIEX Now Support Network, a comprehensive system of service, support and training resources that helps SCIEX users get the answers they need quickly and easily.

Find out more at sciex.com/support.

*Survey performed by Ohriner Research, October 2017



Contents

SCIEX API, Triple Quad, QTRAP and LC-MS/MS systems

3200 systems	3
4000 systems	4
5000 systems	5
3500 systems	6
4500 systems	7
5500/5500+ systems.....	8
6500/6500+ systems.....	9

TripleTOF LC-MS/MS systems

TripleTOF 4600 system.....	10
TripleTOF 5600/5600+ systems.....	11
TripleTOF 6600/6600+ systems.....	12
X500R QTOF system	13
X500B QTOF system	13

Ion sources

TurboIonSpray ion source.....	14
Turbo V ion source	15
IonDrive Turbo V ion source	15
DuoSpray Turbo V ion source	16
Turbo V ion source (for the X500 series).....	16

HPLC and capillary electrophoresis systems

ExionLC AD system	17
ExionLC AC system	17
ExionLC 100 system.....	18
Eksigent HPLC systems	18
SCIEX capillary electrophoresis systems	19
Phenomenex SecurityLINK and SecurityCAP	20

 - Indicates key products SCIEX recommends keeping on hand to avoid workflow disruption

Note: SCIEX recommends professional installation of all parts. SCIEX reserves the right to revise the catalog information (part numbers) at any time without prior notice. Products categorized as Service Consumable Parts are not covered by SCIEX service contracts. Please see sciex.com/service-consumables for details.

API 3200 and 3200 QTRAP LC-MS/MS systems

Maintenance kits, tools and supplies

Description	Part no.
Assembly, syringe	1006524
Essential MS kit	5058495
Essential MS turbo kit	5058491
Essential MS ceramic heater kit	5058494
Filter, mist eliminator ret al	028628
Fitting, PEEK 10/32 inch x 1/16 inch	016325
Fitting, adapter syringe 1/16 inch	019668
Fitting, 1/16 inch short hex PEEK	5041723
Fitting, PEEK tee 0.020 inch bore	1006550
Fitting, PEEK adapter	1008236
Kit, oil return system	028685
Kit, cleaning straight brush	5020761
Needle, syringe KF (qty 6)	1005819
Oil, dual stage roughing pumps (1 liter)	010998
Syringe, gas tight 1.0 mL	010615
Tool, tube cutter PEEK	1018294
Tool, swab anti-static foam (qty 50)	1017396
Tool, Q0 cleaning rod	1028234
Tube, 1/16 inch OD x 0.0025 inch ID PEEK	016485

Vacuum and ventilation parts

Description	Part no.
Fitting, vacuum hose dia 32	007962
Fitting, cuff flex hose PVC	015518
Fitting, gas curtain	025517
O-ring, 7/16 inch ID x 3/32 inch w Viton	000303
O-ring, 1/4 inch ID x 1/16 inch w Viton	000361
O-ring, 5 1/2 inch ID x 1/8 inch w Viton	013325
O-ring, 5.3 inch ID x 1.77 inch w Viton	017809
O-ring, ID 1.74 inch x 0.1 inch w CNDCTV	026459
Ring, centering KF25 Viton	008029
Ring, centering KF16	009424
Tube, .25 inch OD x .125 inch ID Teflon	WC002141
Tube, flex 1.50 inch OD x 1.25 inch ID PVC	015516
Tube, 1/8 inch OD x 1/16 inch ID FEP	017930
Tube, 1/4 inch OD x 1/8 inch ID polyethylene	021624



Filter, mist eliminator
RET AL
#028628



Kit, oil return system
#028685



Vacuum hose fitting
#007962

Chemicals and calibration standards

Description	Part no.
Kit, MS chemical kit 1 low-high conc. PPGs	4406127
Kit, triazine standard mixture	4376887

Electrical parts

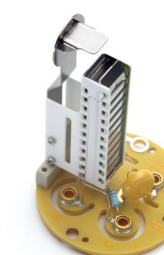
Description	Part no.
Detector, ETP multiplier PCBA (two mounting screws)	017960
Detector, ETP multiplier PCBA (three mounting screws)	5047279
Fuse, 10A 250V DC 5 x 20 mm FB	013629
Fuse, 2.5A 250V 5 x 20 mm SB	020783
Fuse, 2A 250V FSTBLW glass	050204
Fuse, 4A 250V 5 x 20 mm long delay	1003263
Heater, FRU orifice plate	1040121
Orifice, FRU kit 3200 QT 3Q	5015641
Plate, curtain	5046330
Q0, FRU kit 3200 QT 3Q	5054866

Hardware accessories and upgrades

Description	Part no.
Alpha Workstation 2020 (Windows 10)	5074127
Alpha Workstation 2020 (Windows 10), monitor, upgrade installation service	5074067
Cable, GPIB to USB assembly	5026119
Monitor, Dell 23 inch P2314H	5029882
Standard monitor 21.5 inch	5067575
Onsite reimaging installation services (Windows 10 license for XE2 only)	5062281
PC workstation win10 upgrade installation (XE2 optiplex, monitor, GPIB/USB)	5063734
PC workstation Windows 10 upgrade installation (XE2 optiplex, monitor)	5063735
PC workstation Windows 10 upgrade installation (XE2 optiplex)	5063736
Rotor, C10W 10 port valve	4443817
Valve, OPT valve 10 port 2 POS	5027036



MS low-high conc. PPGs kit
#4406127



ETP multiplier detector PCBA
#5047279

API 4000 and 4000 QTRAP LC-MS/MS systems

Maintenance kits, tools and supplies

Description	Part no.
Assembly, syringe	1006524
Essential MS kit	5058495
Essential MS turbo kit	5058491
Essential MS ceramic heater kit	5058494
Filter, mist eliminator RET AL	028628
Fitting, PEEK 10/32 inch x 1/16 inch	016325
Fitting, adapter syringe 1/16 inch	019668
Fitting, 1/16 inch short hex PEEK	5041723
Fitting, PEEK tee 0.020 inch bore	1006550
Fitting, PEEK adapter	1008236
Kit, oil return system	028685
Kit, cleaning straight brush	5020761
Needle, syringe KF (qty 6)	1005819
Oil, dual stage roughing pumps (1 litre)	010998
Oil, varian SS roughing pumps	1034433
Syringe, gas tight 1.0 mL	010615
Tool, tube cutter PEEK	1018294
Tool, swab anti-static foam (qty 50)	1017396
Tool, Q0 cleaning rod	1028234
Tool, nylon brush	4465870
Tube, 1/16 inch OD x 0.0025 inch ID PEEK	016485

Vacuum and ventilation parts

Description	Part no.
Fitting, clamping ring KF10/16	002083
Fitting, vacuum hose dia 32	007962
Fitting, cuff flex hose PVC	015518
Fitting, gas curtain	025517
Fitting, reducer 0.25 inch to 0.125 Inch	5044724
Fitting, bulkhead union	5042824
O-ring, 3/16 inch ID x 1/16 inch w Viton	003403
O-ring, 5/16 inch ID x 1/16 inch w Viton	010514
O-ring, 1.74 inch ID x 0.1 w CNDCTV	026459
Ring, centering KF25 Viton	008029
Ring, centering KF16	009424
Tube, flex 1.25 inch ID x 1.50 inch OD PVC	015516
Tube, 1/16 inch OD x .005 inch bore	016316
Tube, 1/16 inch ID x 1/8 inch OD FEP	017930



Anti-static foam Swabs
#1017396



Tube flex 1.25 ID x 1.50 OD inch
#015516



Vacuum hose fitting
#007962

Chemicals and calibration standards

Description	Part no.
Kit, MS chemical low-high conc. PPGs	4406127
Kit, triazine standard mixture	4376887

Electrical parts

Description	Part no.
Detector, CEM, 4822B ceramic mounted	1033084
Detector, CEM 4822C ceramic mounted	1033085
Heater, FRU orifice plate	1040121
Fuse, .5A 250V SLWBLW glass	010848
Fuse, 10A 250V DC 5 x 20 mm FB	013629
Fuse, 2A 250V FSTBLW glass	050204
Fuse, 4A 250V 5 x 20 mm long delay	1003263
Orifice, FRU kit plate 4000	5015638
Plate, curtain	5046330

Hardware accessories and upgrades

Description	Part no.
Alpha Workstation 2020 (Windows 10)	5074127
Alpha Workstation 2020 (windows 10), monitor, upgrade installation service	5074067
Bench, OPT bench assembly	1011328
Cable, GPIB to USB assembly	5026119
Monitor, Dell 23 inch P2314H	5029882
Standard monitor 21.5 inch	5067575
Onsite reimaging installation services (Windows 10 license for XE2 only)	5062281
PC workstation Windows 10 upgrade installation (XE2 optiplex, monitor, GPIB/USB)	5063734
PC workstation Windows 10 upgrade installation (XE2 optiplex, monitor)	5063735
PC workstation Windows 10 upgrade installation (XE2 optiplex)	5063736
Pump, single dry pump Edwards (upgrade kit)	4400243
Rotor, C10W 10 port valve	4443817
Syringe, OPT pump assembly	5061324
Valve, OPT valve 10 port 2 POS	5027036



Orifice, FRU kit plate 4000
#5015638



Kit, upgrade single dry pump edwards
#4400243

API 5000 and 5000 QTRAP LC-MS/MS systems

Maintenance kits, tools and supplies

Description	Part no.
Essential MS kit	5058495
Essential MS turbo kit	5058491
Essential MS ceramic heater kit	5058494
Assembly, syringe	1006524
Brush, nylon for QJet® Ion Guide 5500	4465870
Filter, oil return ballast varian	WC9499342
Fitting, PEEK 10/32 x 1/16 inch	016325
Kit, oil return system	028685
Kit, cleaning straight brush	5020761
Needle, syringe Luer hub 2 inch	010616
Needle, syringe KF (qty 6)	1005819
Oil, dual stage roughing pumps (1 litre)	010998
Oil, Varian ss roughing pumps	1034433
Syringe, gas tight 1.0 mL	010615
Tool, tube cutter PEEK	1018294
Tool, swab anti-static foam (qty 50 - size 1/4 inch)	1017396
Tool, swab anti-static foam (qty 50 - size 7/16 inch)	1017398
Tool, Q0 cleaning rod	1028234

Vacuum and ventilation parts

Description	Part no.
Fitting, gas curtain	025517
Fitting, reducer 0.25 inch to 0.125 inch	5044724
Fitting, bulkhead union	5042824
O-ring, 5/16 inch ID x 1/16 inch w Viton	010514
O-ring, 5.3 inch ID x 1.77 inch w Viton	017809
O-ring, 2.11 inch ID x 0.14 inch w Viton	025537
O-ring, 1.74 inch ID X 0.1 w CNDCTV	026459
Ring, seal	025373
Tube, .125 inch ID x .25 OD Teflon	WC002141
Tube, flex 1.25 inch ID x 1.50 inch OD PVC	015516
Tube, 1/16 inch OD x .005 inch bore	016316
Tube, 1/16 inch OD x 0.0025 inch ID PEEK	016485
Tube, 1/8 inch OD x 1/16 inch ID FEP	017930



Anti-static foam swabs
#1017396



Tube flex 1.25 ID x 1.50 OD inch
#015516



Vacuum hose fitting
#007962

Chemicals and calibration standards

Description	Part no.
Kit, MS chemical low-high conc. PPGs	4406127
Kit, triazine standard mixture	4376887

Electrical parts

Description	Part no.
Cap, var .8-10pF 12kV Teflon	5009329
Detector, CEM, 4822B ceramic mounted	1033084
Heater, FRU orifice plate	1040121
Orifice, FRU API 5000™	1040119
Fuse, 2A 250V FSTBLW glass	050204
Fuse, 4A 250V 5 x 20 mm long delay	1003263
Curtain gas plate for API 5000/5500s	5046215

Hardware accessories and upgrades

Description	Part no.
Alpha Workstation 2020 (Windows 10)	5074127
Alpha Workstation 2020 (Windows 10), monitor, upgrade installation service	5074067
Bench, OPT bench assembly	1011328
Cable, GPIB to USB assembly	5026119
Standard monitor 21.5 inch	5067575
OPT monitor 27 inch	5046554
Onsite reimaging installation services (win10 license for XE2 only)	5062281
PC workstation Windows 10 upgrade installation (XE2 optiplex, monitor, GPIB/USB)	5063734
PC workstation Windows 10 upgrade installation (XE2 optiplex, monitor)	5063735
PC workstation Windows 10 upgrade installation (XE2 optiplex)	5063736
Rotor, C10W 10 port valve	4443817
Syringe, OPT pump assembly	5061324
Valve, OPT valve 10 port 2 POS	5027036



Orifice, FRU API5000
#1040119



QJET for API 5000
#1012622

SCIEX Triple Quad 3500 LC-MS/MS system

Maintenance kits, tools and supplies

Description	Part no.
Essential MS kit	5058495
Essential MS turbo kit	5058491
Essential MS ceramic heater kit	5058494
Essential MS metal heater kit	5062269
Fitting, adapter syringe 1/16 inch	019668
Kit, planned maintenance	5054105
Kit, cleaning straight brush	5020761
Kit, consumables	5046800
Needle, syringe KF (pkg of 6)	1005819
Rod, Q0 cleaning	1028234
Syringe, gas tight 1.0 mL	010615
Tool, tube cutter PEEK	1018294
Tool, swab anti-static foam (qty 50 - size 1/4 inch)	1017396
Tool, swab anti-static foam (qty 50 - size 7/16 inch)	1017398

Vacuum and ventilation parts

Description	Part no.
Filter, foam 10ppi 0.5 inch x 1.47 inch x 20.67 inch	1029847
Fitting, clamping ring KF10/16	002083
Fitting, gas curtain	025517
Fitting, reducer 0.25 inch to 0.125 inch	5044724
Fitting, nipple K40 200 mm	1025164
O-ring, 7/8 inch ID x 3/32 inch w Viton	000352
O-ring, 5.3 inch ID x 1.77 w Viton	017809
O-ring, 4 1/8 inch ID x 1/8 inch w Viton	022618
O-ring, 2.11 inch ID x 0.14 inch w Viton	025537
Ring, seal	025373
Tube, .25 inch OD x .125 inch ID Teflon	WC002141
Tube, 1/16 inch OD x .005 inch bore	016316
Tube, 1/16 inch OD x 0.0025 inch ID PEEK	016485
Tube, 1/8 inch OD x 1/16 inch ID FEP	017930
Tube, 1/8 inch ID x 1/4 inch OD polyethylene	021624



Anti-static foam swabs
#1017396



Vacuum hose fitting
#007962



Air intake filter
#017363

Chemicals and calibration standards

Description	Part no.
Kit, MS chemical kit1 low-high conc. PPGs	4406127
Kit, triazine standard mixture	4376887

Electrical parts

Description	Part no.
Detector, CEM 4822D ceramic mounted	1034160
Fuse, slow blow 6.3A 250V 5 x 20 mm	5021235
FRU, Q0 lens kit	5018227
FRU, Q0 front module	5018230
Orifice with replaceable heater	5015556
Plate, curtain	5046330

Hardware accessories and upgrades

Description	Part no.
Alpha Workstation 2020 (Windows 10)	5074127
Alpha Workstation 2020 (Windows 10), monitor, upgrade installation service	5074067
MS bench SC	15073096
Monitor, Dell 23 inch P2314H	5029882
Standard monitor 21.5 inch	5039995
Onsite reimaging installation services (Windows 10 license for XE2 only)	5062281
PC workstation Windows 10 upgrade installation (XE2 optiplex)	5063736
PC workstation Windows 10 upgrade installation (XE2 optiplex, monitor)	5063735
Rotor, C10W 10 port valve	4443817
Syringe, OPT pump assembly	5038006
Valve, OPT valve 10 port 2 POS	5027036



Plate, curtain
#5046330



CEM ceramic detector (4822D)
#1034160

SCIEX Triple Quad and QTRAP 4500 LC-MS/MS systems

Maintenance kits, tools and supplies

Description	Part no.
Essential MS kit	5058495
Essential MS turbo kit	5058491
Essential MS ceramic heater kit	5058494
Essential MS metal heater kit	5062269
Can, spray duster 8oz stoner (94201)	4412444DHR
Fitting, adapter syringe 1/16 inch	019668
Fitting, PEEK tee 0.020 in bore	1006550
Kit, maintenance	5054105
Kit, cleaning straight brush	5020761
Kit, consumables	5046800
Needle, syringe KF (pkg of 6)	1005819
Oil, roughing pump (1 litre)	1027317
Rod, Q0 cleaning	1028234
Syringe, gas tight 1.0 mL	010615
Tool, tube cutter PEEK	1018294
Tool, swab anti-static foam (qty 50 - size 1/4 inch)	1017396
Tool, swab anti-static foam (qty 50 - size 7/16 inch)	1017398
Tube, 1/16 OD-0.0025 inch ID PEEK	016485
Wipers, Kimwipes 4.5 inch x 8.5 inch (qty 280)	018027

Vacuum and ventilation parts

Description	Part no.
Filter, foam 10ppi 0.5 inch x 1.47 inch x 20.67 inch	1029847
Fitting, clamping ring KF10/16	002083
Fitting, gas curtain	025517
Fitting, reducer 0.25 inch to 0.125 inch	5044724
Fitting, bulkhead union	5042824
O-ring, 7/8 inch ID x 3/32 inch w Viton	000352
O-ring, 5/16 inch ID x 1/16 inch w Viton	000352
O-ring, 5.3 inch ID x 1.77 inch w Viton	017809
O-ring, 2.11 inch ID x 0.14 inch w Viton	025537
O-ring, 1.74 inch ID x 0.1 inch w CNDCTV	026459
Ring, seal	025373
Tube, .25 inch OD x .125 inch ID Teflon	WC002141
Tube, 1/16 inch OD x .005 inch bore	016316
Tube, 1/8 inch OD x 1/16 inch ID FEP	017930



Anti-static foam swabs
#1017396



Kimwipes® 4.5 x 8.5 inch (qty 280)
#018027



Vacuum hose fitting
#007962

Chemicals and calibration standards

Description	Part no.
Essential LC-MS performance kits (environmental)	5056819
Essential LC-MS performance kits (toxicology)	5056822
Essential LC-MS performance kits (sm pharma)	5056816
Essential LC-MS performance kits (peptide)	5056815
Kit, MS chemical low-high conc. PPGs	4406127
Kit, triazine standard mixture	4376887

Electrical parts

Description	Part no.
Detector, CEM 4822D ceramic mounted	1034160
Fuse, slow blow 6.3A 250V 5 x 20 mm	5021235
FRU, Q0 lens kit	5018227
FRU, Q0 front module	5018230
Orifice with replaceable heater	5015556
Plate, curtain	5046330

Hardware accessories and upgrades

Description	Part no.
Alpha Workstation 2020 (Windows 10)	5074127
Alpha Workstation 2020 (Windows 10), monitor, upgrade installation service	5074067
MS bench SCI	5073096
Monitor, Dell 23 inch P2314H	5029882
Standard monitor 21.5 inch	5067575
Monitor, 27 inch	5069543
Onsite reimaging installation services (Windows 10 license for XE2 only)	5062281
PC workstation Windows 10 upgrade installation (XE2 optiplex)	5063736
PC workstation Windows 10 upgrade installation (XE2 optiplex, monitor)	5063735
Source, 4500 NanoSpray ion source MIS III	5056413
Valve, diverter 2 POS 6 port	1034233



CEM ceramic detector (4822D)
#1034160



Plate, curtain
#5046330

SCIEX Triple Quad and QTRAP 5500 LC-MS/MS systems and SCIEX Triple Quad 5500+ LC-MS/MS system – QTRAP ready

Maintenance kits, tools and supplies

Description	Part no.
Essential MS kit	5058495
Essential MS turbo kit	5058491
Essential MS ceramic heater kit	5058494
Essential MS metal heater kit	5062269
Fitting, adapter syringe 1/16 inch	019668
Fitting, PEEK tee 0.020 inch bore	1006550
Kit, maintenance	5054105
Kit, cleaning straight brush	5020761
Kit, consumables	5046800
Needle, syringe KF (pkg of 6)	1005819
Oil, roughing pump (1 litre)	1034433
Rod, Q0 cleaning	1028234
Syringe, gas tight 1.0 mL	010615
Tool, tube cutter PEEK	1018294
Tool, swab anti-static foam (qty 50 - size 1/4 inch)	1017396
Tool, swab anti-static foam (qty 50 - size 7/16 inch)	1017398
Tube, 1/16 OD-0.0025 inch ID PEEK	016485
Wipers, Kimwipes 4.5 inch x 8.5 inch (qty 280)	018027

Vacuum and ventilation parts

Description	Part no.
Filter, foam 10ppi 0.5 inch x 1.47 inch x 20.67 inch	1029847
Fitting, clamping ring KF10/16	002083
Fitting, gas curtain	025517
Fitting, reducer 0.25 inch to 0.125 inch	5044724
Fitting, bulkhead union	5042824
O-ring, 7/8 inch ID x 3/32 inch w Viton	000352
O-ring, 5/16 inch ID x 1/16 inch w Viton	010514
O-ring, 5.3 inch ID x 1.77 inch w Viton	017809
O-ring, 2.11 inch ID x 0.14 inch w Viton	025537
O-ring, 1.74 inch ID x 0.1 inch w CNDCTV	026459
Ring, seal	025373
Tube, .25 inch OD x .125 inch ID Teflon	WC002141
Tube, 1/16 inch OD x .005 inch bore	016316
Tube, 1/8 inch OD x 1/16 inch ID FEP	017930



Anti-static foam swabs
#1017396



Kimwipes 4.5 x 8.5 inch (qty 280)
#018027



Vacuum hose fitting
#007962

Chemicals and calibration standards

Description	Part no.
Essential LC-MS performance kits (environmental)	5056819
Essential LC-MS performance kits (toxicology)	5056822
Essential LC-MS performance kits (sm pharma)	5056816
Essential LC-MS performance kits (peptide)	5056815
Kit, MS chemical low-high conc. PPGs	4406127
Kit, triazine standard mixture	4376887



MS higher conc. PPGs kit1
#4412399

Electrical parts

Description	Part no.
Detector, CEM 4822D ceramic mounted	1034160
Fuse, slow blow 6.3A 250V 5 x 20 mm	5021235
FRU, Q0 lens kit	5018227
FRU, Q0 front module	5018230
Orifice with replaceable heater	5015556
Curtain gas plate for API 5000™/5500s	5046215



Plate, curtain
#5046215

Hardware accessories and upgrades

Description	Part no.
Alpha Workstation 2020 (Windows 10)	5074127
Alpha Workstation 2020 (Windows 10), monitor, upgrade installation service	5074067
MS bench SCI	5073096
Monitor, Dell 23 inch P2314H	5029882
Standard monitor 21.5 inch	5067575
Monitor 27 inch	5069543
Onsite reimaging installation services (Windows 10 license for XE2 only)	5062281
PC workstation Windows 10 upgrade installation (XE2 optiplex)	5063736
PC workstation Windows 10 upgrade installation (XE2 optiplex, monitor)	5063735
Source, 4500 NanoSpray ilon source MIS III	5056413
Valve, diverter 2 POS 6 port	1034233

SCIEX Triple Quad and QTRAP 6500 and 6500+ LC-MS/MS systems

Maintenance kits, tools and supplies

Description	Part no.
Essential MS kit	5058495
Essential MS turbo kit	5058491
Essential MS ion drive heater kit	5062313
Fitting, adapter syringe 1/16 inch	019668
Fitting, PEEK tee 0.020 inch bore	1006550
Kit, maintenance	5054105
Kit, cleaning straight brush	5020761
Needle, syringe KF (pkg of 6)	1005819
Oil, roughing pump (1 litre)	1034433
Rod, Q0 cleaning	1028234
Syringe, gas tight 1.0 mL	010615
Tool, tube cutter PEEK	1018294
Tool, swab anti-static foam (qty 50 - size 1/4 inch)	1017396
Tool, swab anti-static foam (qty 50 - size 7/16 inch)	1017398
Tube, 1/16 inch OD x 0.0025 inch ID PEEK	016485
Wipers, Kimwipes 4.5 inch x 8.5 inch (qty 280)	018027

Vacuum and ventilation parts

Description	Part no.
Filter, foam 10ppi 0.5 inch x 1.47 inch x 20.67 inch	1029847
Fitting, clamping ring KF10/16	002083
Fitting, gas curtain	025517
Fitting, reducer 0.25 inch to 0.125 inch	5044724
Fitting, bulkhead union	5042824
O-ring, 7/8 inch ID x 3/32 inch w Viton	000352
O-ring, 5/16 inch ID x 1/16 inch w Viton	010514
O-ring, 5.3 inch ID x 1.77 inch w Viton	017809
O-ring, 2.11 inch ID x 0.14 inch w Viton	025537
O-ring, 1.74 inch ID x 0.1 inch w CNDCTV	026459
Ring, seal	025373
Tube, .25 inch OD x .125 inch ID Teflon	WC002141
Tube, 1/16 inch OD x .005 inch bore	016316
Tube, 1/8 inch OD x 1/16 inch ID FEP	017930



Anti-static foam swabs
#1017396



Kimwipes 4.5 x 8.5 inch (qty 280)
#018027



Vacuum hose fitting
#007962

Chemicals and calibration standards

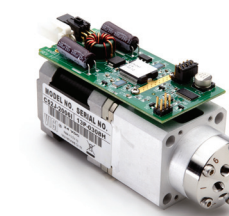
Description	Part no.
Essential LC-MS performance kits (environmental)	5056819
Essential LC-MS performance kits (toxicology)	5056822
Essential LC-MS performance kits (sm pharma)	5056816
Essential LC-MS performance kits (peptide)	5056815
Kit, MS chemical kit1 low-high conc. PPGs	4406127
Kit, triazine standard mixture	4376887



MS higher conc. PPGs kit1
#4412399

Electrical parts

Description	Part no.
Detector, 5901 magnum w cable	5017727
Fuse, slow blow 6.3A 250V 5 x 20 mm	5021235
Heater, FRU orifice plate	1040121
IonDrive QJet ion guide	5019714
Orifice, kit orifice plate	5019790
Plate gas curtain DCI	1028897



Valve, diverter 2 POS 6 port
#1034233

Hardware accessories and upgrades

Description	Part no.
Alpha Workstation 2020 (Windows 10)	5074127
Alpha Workstation 2020 (Windows 10), monitor, upgrade installation service	5074067
MS bench SCI	5073096
Monitor, Dell 23 inch P2314H	5029882
Standard monitor 21.5 inch	5067575
Monitor 27 inch	5069543
Onsite reimaging installation services (Windows 10 license for XE2 only)	5062281
PC workstation Windows 10 upgrade installation (XE2 optiplex)	5063736
PC workstation Windows 10 upgrade installation (XE2 optiplex, monitor)	5063735
Valve, diverter 2 POS 6 port	1034233

TripleTOF 4600 LC-MS/MS system

Maintenance kits, tools and supplies

Description	Part no.
Fitting, adapter syringe 1/16 inch ✓	019668
Fitting, PEEK tee 0.020 inch bore	1006550
Kit, maintenance	5054105
Kit, cleaning straight brush ✓	5020761
Kit, consumables	5055964
Needle, syringe KF (pkg of 6) ✓	1005819
Oil, roughing pump (1 litre) ✓	5043115
Rod, Q0 cleaning ✓	1028234
Syringe, gas tight 1.0 mL ✓	010615
Tool, tube cutter PEEK ✓	1018294
Tool, swab anti-static foam (qty 50 - size 1/4 inch) ✓	1017396
Tool, swab anti-static foam (qty 50 - size 7/16 inch) ✓	1017398
Tube, 1/16 inch OD x 0.0025 inch ID PEEK	016485
Wipers, Kimwipes 4.5 inch x 8.5 inch (qty 280) ✓	018027



Anti-static foam swabs
#1017396



Kimwipes 4.5 x 8.5 inch (qty 280)
#018027

Vacuum and ventilation parts

Description	Part no.
Filter, foam 10ppi 0.5 inch x 1.47 inch x 20.67 inch	1029847
Fitting, clamping ring KF10/16	002083
Fitting, gas curtain	025517
Fitting, reducer 0.25 inch to 0.125 inch	5044724
Fitting, bulkhead union	5042824
O-ring, 7/8 inch ID x 3/32 inch w Viton	000352
O-ring, 5/16 inch ID x 1/16 inch w Viton	010514
O-ring, 2.11 inch ID x 0.14 inch w Viton	025537
O-ring, 1.74 inch ID x 0.1 inch w CNDCTV	026459
Ring, seal	025373
Tube, .25 inch OD x .125 inch ID Teflon	WC002141
Tube, 1/16 inch OD x .005 inch bore	016316
Tube, 1/8 inch OD x 1/16 inch ID FEP	017930

Chemicals and calibration standards

Description	Part no.
Kit, APCI neg cal soln 5600	4460134
Kit, MS chemical low-high conc. PPGs ✓	4406127
Kit, triazine standard mixture	4376887

Electrical parts

Description	Part no.
Detector, FRU detector kit ✓	1039634
Fuse, 2A 250V fast blow glass ✓	050204
Fuse, cartridge ceramic 16A 250V 5 x 20 mm	5045730
Heater, FRU orifice plate	1040121
Orifice	5058854
Plate, gas curtain DCI ✓	1028897



Plate, curtain
#1028897

Hardware accessories and upgrades

Description	Part no.
Computer, standalone PC workstation (Precision T7910)	5037167
Computer, standalone PC workstation (Precision T5810)	5041941
Edgeport, USD to serial expansion kit	1039142
Kit, nano DCI	5056292
Standard monitor 21.5 inch	5067575
Monitor 27 inch	5069543
Onsite reimaging installation services (Windows 10 license for XE2 only)	5062281
Source, NanoSpray ion source MIS III	5052735

TripleTOF 5600 and 5600+ LC-MS/MS systems

Maintenance kits, tools and supplies

Description	Part no.
Essential MS kit	5058495
Essential MS turbo kit	5058491
Essential MS ceramic heater kit	5058494
Essential MS metal heater kit	5062269
Fitting, adapter syringe 1/16 inch	019668
Fitting, PEEK tee 0.020 inch bore	1006550
Kit, maintenance	1039927
Kit, cleaning straight brush	5020761
Kit, consumables	5055964
Needle, syringe KF (pkg of 6)	1005819
Oil, roughing pump (1 litre)	5043115
Rod, Q0 cleaning	1028234
Syringe, gas tight 1.0 mL	010615
Tool, tube cutter PEEK	1018294
Tool, swab anti-static foam (qty 50 - size 1/4 inch)	1017396
Tool, swab anti-static foam (qty 50 - size 7/16 inch)	1017398
Tube, 1/16 inch OD x 0.0025 inch ID PEEK	016485
Wipers, Kimwipes 4.5 inch x 8.5 inch (qty 280)	018027

Vacuum and ventilation parts

Description	Part no.
Filter, foam 10ppi 0.5 inch x 1.47 inch x 20.67 inch	1029847
Fitting, clamping ring KF10/16	002083
Fitting, gas curtain	025517
Fitting, reducer 0.25 inch to 0.125 inch	5044724
Fitting, bulkhead union	5042824
O-ring, 7/8 inch ID x 3/32 inch w Viton	000352
O-ring, 5/16 inch ID x 1/16 inch w Viton	010514
O-ring, 5.3 inch ID x 1.77 inch w Viton	017809
O-ring, 2.11 inch ID x 0.14 inch w Viton	025537
O-ring, 1.74 inch ID x 0.1 inch w CNDCTV	026459
Ring, seal	025373
Tube, .25 inch OD x .125 inch ID Teflon	WC002141
Tube, 1/16 inch OD x .005 inch bore	016316
Tube, 1/8 inch OD x 1/16 inch ID FEP	017930



Anti-static foam swabs
#1017396



Kimwipes 4.5 x 8.5 inch (qty 280)
#018027

Chemicals and calibration standards

Description	Part no.
Kit, APCI neg cal soln 5600	4460134
Kit, MS chemical low-high conc. PPGs	4406127
Kit, triazine standard mixture	4376887

Electrical parts

Description	Part no.
Curtain gas plate	5046215
Detector, FRU detector kit	1039634
Fuse, kit FRU fuse	1040406
Heater, FRU orifice plate	1040121
Orifice	5058854



Curtain gas plate
#5046215

Hardware accessories and upgrades

Description	Part no.
Edgeport, USD to serial expansion kit	1039142
Kit, nano DCI	5056292
Standard monitor 21.5 inch	5067575
Monitor 27 inch	5069543
On-site reimaging installation services (Windows 10 license for T5810)	5069233
PC workstation (T5820)	5073300
PC workstation Windows 10 upgrade installation (T5820)	5069244
PC workstation Windows 10 upgrade installation (T5820, monitor)	5069243
Source, NanoSpray ion source MIS III	5052735

TripleTOF 6600 and 6600+ LC/MS/MS systems

Maintenance kits, tools and supplies

Description	Part no.
Essential MS kit	5058495
Essential MS turbo kit	5058491
Essential MS ceramic heater kit	5058494
Essential MS metal heater kit	5062269
Fitting, adapter syringe 1/16 inch	019668
Fitting, PEEK tee 0.020 inch bore	1006550
Kit, maintenance	5062245
Kit, cleaning straight brush	5020761
Needle, syringe KF (pkg of 6)	1005819
Oil, roughing pump (1 litre)	5043115
Rod, Q0 cleaning	1028234
Syringe, gas tight 1.0 mL	010615
Tool, tube cutter PEEK	1018294
Tool, swab anti-static foam (qty 50 - size 1/4 inch)	1017396
Tool, swab anti-static foam (qty 50 - size 7/16 inch)	1017398
Tube, 1/16 inch OD x 0.0025 inch ID PEEK	016485
Wipers, Kimwipes 4.5 inch x 8.5 inch (qty 280)	018027

Vacuum and ventilation parts

Description	Part no.
Filter, foam 10ppi 0.5 inch x 1.47 inch x 20.67 inch	1029847
Fitting, clamping ring KF10/16	002083
Fitting, gas curtain	025517
Fitting, reducer 0.25 inch to 0.125 inch	5044724
Fitting, bulkhead union	5042824
O-ring, 7/8 inch ID x 3/32 inch w Viton	000352
O-ring, 5/16 inch ID x 1/16 inch w Viton	010514
O-ring, 5.3 inch ID x 1.77 inch w Viton	017809
O-ring, 2.11 inch ID x 0.14 inch w Viton	025537
O-ring, 1.74 inch ID x 0.1 inch w CNDCTV	026459
Ring, seal	025373
Tube, .25 inch OD x .125 inch ID Teflon	WC002141
Tube, 1/16 inch OD x .005 inch bore	016316
Tube, 1/8 inch OD x 1/16 inch ID FEP	017930



Anti-static foam swabs
#1017396



Kimwipes 4.5 x 8.5 inch (qty 280)
#018027

Chemicals and calibration standards

Description	Part no.
Kit, APCI neg cal soln 5600	4460134
Kit, MS chemical kit1 low-high conc. PPGs	4406127
Kit, triazine standard mixture	4376887

Electrical parts

Description	Part no.
Curtain gas plate	5046215
Detector, FRU detector kit	5060389
Fuse, slow blow 6.3A 250V 5 x 20 mm	5021235
Heater, FRU orifice plate	1040121
Orifice	5058854
QJet ion guide	1039386



Curtain gas plate
#5046215

Hardware accessories and upgrades

Description	Part no.
Kit, nano DCI	5056292
Monitor, Dell 23 inch P2314H	5029882
Standard monitor 21.5 inch	5067575
Monitor 27 inch	5069543
On-site reimaging installation services (Windows 10 license for T5810)	5069233
PC workstation (T5820)	5073300
PC workstation Windows 10 upgrade installation (T5820)	5069244
PC workstation Windows 10 upgrade installation (T5820, monitor)	5069243
Source, NanoSpray ion source MIS III	5052735

X500R and X500B QTOF systems

Maintenance kits, tools and supplies

Description	Part no.
Fitting, adapter syringe 1/16 inch	019668
Fitting, PEEK tee 0.020 inch bore	1006550
Kit, cleaning straight brush	5020761
Needle, syringe KF (pkg of 6)	1005819
Oil, roughing pump (1 litre)	5043115
Rod, Q0 cleaning	1028234
Syringe, gas tight 1.0 mL	010615
Tool, tube cutter PEEK	1018294
Tool, swab anti-static foam (qty 50 - size 1/4 inch)	1017396
Tool, swab anti-static foam (qty 50 - size 7/16 inch)	1017398
Tool, tapered brush	5020895
Tube, 1/16 inch OD x 0.0025 inch ID PEEK	016485
Tube, bom	5043357
Tubing, PEEK 1/16 inch OD 100 feet length	5039766
Valve, inline check valve F-F 10-32 PEEK	016325
Wipers, Kimwipes 4.5 inch x 8.5 inch (qty 280)	018027

Vacuum and ventilation parts

Description	Part no.
Clamp, ring DN 32/NW40	5019958
Clamp, KF20 KF25	007924
Ferrule, flangeless 1/16 inch	027033
Ferrule, front back 1/4 inch tube	019178
Fitting, elbow 90 deg NW KF25	000578
Fitting, gas curtain	025517
Fitting, union 1/16 inch 0.75 mm bore	018038
Fitting, vacuum hose dia 32	007962
Kit, 4L waste bottle	5049826
Ring, centering KF25 Viton	008029
Ring, centering NW40	1009556
Tubing, 1/16 inch OD PEEK	5038874



Anti-static foam swabs
#1017396



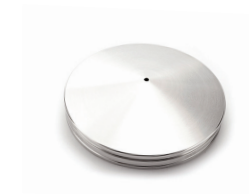
Kimwipes 4.5 x 8.5 inch (qty 280)
#018027



Vacuum hose fitting
#007962

Chemicals and calibration standards

Description	Part no.
Kit, APCI positive calibration solution X500 series (5 pack)	5042918
Kit, APCI negative calibration solution X500 series (5 pack)	5042919
Kit, ESI positive calibration solution X500R series (5 pack)	5042916
Kit, ESI negative calibration solution X500 series (5 pack)	5042917
Kit, MS chemical kit1 low-high conc. PPGs	4406127
Kit, triazine standard mixture	4376887



Curtain gas plate
#5046215

Electrical parts

Description	Part no.
Curtain gas plate	5046215
FRU, detector assembly	5058482
Fuse, 4A 250V 5 x 20 mm slo-blo	5010022
Kit orifice plate 6500	5019790
Orifice contain heater	1040121
QJet ion guide	5058488

Hardware accessories and upgrades

Description	Part no.
Alpha Workstation 2020 (Windows 10)	5074128
Alpha Workstation 2020 (Windows 10), monitor, upgrade installation service	5074069
Bench, X500 LC bench	5044447
60 inch w x 31 inch d x 30 inch h mass spec bench	5073675
Bench, X500 PC data entry bench	5044448
Kit, ESI APCI twin sprayer probe	5057681
Kit, ESI twin sprayer probe	5056403
Monitor, Dell 23 inch P2314H	5029882
Standard monitor 21.5 inch	5067575
Monitor 27 inch	5069543
Soundproof, roughing pump SV65 enclosure	5014334

TurbolonSpray ion source

This section contains currently supported SCIEX ion sources and lists the related spare and consumable parts you need to keep your SCIEX mass spectrometer running at peak performance.

Models compatibility

Description	Part no.
TurbolonSpray ion source	019415
Compatible systems: API 2000, QTRAP	
TurbolonSpray ion source (API 3000)	019434
Compatible systems: API 3000	
Turbo V ion source	5048131
Compatible systems: 3200, 4000, 3500, 4500 and 5500 series	
IonDrive Turbo V ion source	5019350
Compatible systems: 6500 series	
DuoSpray Turbo V ion source	1039454
Compatible systems: 4600, 5600 and 6600 series	
Turbo V ion source (X500)	5043208
Compatible systems: X500 series	

This section relates to the TurbolonSpray source (#019415) compatible with the **API 2000 and QTRAP system:**

Source parts

Description	Part no.
Electrode, TIS	018782
Ferrule, 1/8 inch	018724
Ferrule, 1/16 inch PEEK	022542
Fitting, PEEK 10/32 inch x 1/16 inch	016325
Fitting, PEEK face 1/8 inch	018723
Fitting, union 0.15 mm bore	018786
Fitting, electrode	022541
Heater, probe TIS	017789
Nut, inside	018320
Nut, tube N	019405
Nut, 1/16 inch tube 10-32 SS	022553
Spring, heated nebulizer probe	018829
Spring, comp OD.42 L.375 D.041	019479
Tube, 1/16 inch OD x .005 inch bore	016316
Tube, 1/16 inch OD x 0.0025 inch ID PEEK	016485



Turbo V source
#5031503



IonDrive Turbo V source
#5019350



Tube 1/16 OD x .005 bore
#016316

Vacuum parts

Description	Part no.
Ferrule, 1-16 inch Valco	019674
Ferrule, conductive discrete	1005281
Fitting, 1/4 inch hex 10/32 inch x 1/16 inch TBNG	017870
O-ring, 1.9 inch ID x .139 inch w VIT TEF	018759
O-ring, 7/16 inch ID x 1/16 inch w Viton	000309
O-ring, 3/8 inch ID x 1/16 inch w Viton	000329
O-ring, 3 mm ID x 1 mm w Viton	017819
O-ring, 3/32 inch ID x 1/6 inch w Viton	5050972
O-ring, 1/8 inch ID x 1/16 inch w Viton	017865
O-ring, 11/16 inch ID x 1/16 inch w Viton TFE	017866
O-ring, 6 mm ID x 1 mm w Viton	017868
O-ring, 25 mm ID x 2.5 mm w Viton	018762
O-ring, 4 mm ID x 1 mm w Viton	018783
O-ring, 2 mm ID x 1 mm w Viton	5049790
Tube, quartz modified (APCI/heated nebulizer)	017765

This section relates to the TurbolonSpray source (#019434) compatible with the **API 3000 system:**

Source parts

Description	Part no.
Assembly, nozzle TIS upgrade	018864
Electrode, assembly TIS upgrade package	018863
Electrode, assembly TIS upgrade final	018913
Heater, probe TIS	017789

Vacuum parts

Description	Part no.
Ferrule, 1-16 inch Valco	019674
Fitting, 1/4 inch hex 10/32 inch x 1/16 inch TBNG	017870
O-ring, 7/16 inch ID x 1/16 inch w Viton	000309
O-ring, 3/8 inch ID x 1/16 inch w Viton ✓	000329
O-ring, 3 mm ID x 1 mm w Viton ✓	017819
O-ring, 3/32 inch ID x 1/6 inch w Viton	5050972
O-ring, 1/8 inch ID x 1/16 inch w Viton	017865
O-ring, 11/16 inch ID x 1/16 inch w Viton TFE	017866
O-ring, 6 mm ID x 1 mm w Viton	017868
O-ring, 2 mm ID x 1 mm w Viton ✓	5049790
O-ring, 3/4 inch ID x 1/16 inch w Viton	019662
Tube, quartz modified (APCI/heated nebulizer) ✓	017765



O-ring 3/8 inch ID 1/16 inch
#000329



Quartz tube
#017765



Heater probe TIS
#017789

Turbo V ion source and IonDrive Turbo V ion source

This section relates to Turbo V™ Ion Source (#5048131), compatible with the **API 3200, API 4000, API 5000, SCIEX Triple Quad 3500, SCIEX Triple Quad 4500, SCIEX Triple Quad 5500, 3200 QTRAP, 4000 QTRAP, QTRAP 4500 and QTRAP 5500 systems:**

Turbo V ion source parts

Description	Part no.
Electrode, neb	025388
Electrode, TIS	025392
Heater, FRU APCI kit	028102
Kit, duo TIS PEEK tubing	1005601
Kit, duo APCI PEEK tubing	1005602
Kit, upgrade turbo heater (metal)	5027502
Kit, heater cartridge replacement	5051082
Kit, MS essentials	5058495
Kit, MS ceramic heater essentials	5058494
Kit, MS metal heater essentials	5062269
Kit, MS electrode turbo essentials	5058491
Probe, OPT kit neb	5051075
Probe, OPT kit turbo	5050361

Turbo V ion source vacuum parts

Description	Part no.
Fitting, tee ring SS	018787
Fitting, vent	019407
O-ring, 7/16 inch ID x 1/16 inch w Viton	000309
O-ring, 3/8 inch ID x 1/16 inch w Viton	000329
O-ring, 7/8 inch ID x 1/16 inch w Viton	5050957
O-ring, 1/4 inch ID x 1/16 inch w Viton	000361
O-ring, 3/16 inch ID x 1/16 inch w Viton	003403
O-ring, 3 mm ID x 1 mm w Viton	017819
O-ring, 2 mm ID x 1 mm w Viton	5049790
O-ring, 3.73 ID x 1/16 inch w Viton	025727
O-ring, 112 mm id x 3 w Viton	5043573
O-ring, 7/16 inch ID x 1/16 inch w Teflon	027473
O-ring, 20 ID x 1 inch w Viton	027818
Tube, 1/16 inch ID x 1/8 inch OD Viton	5046352



Turbo heater (APCI)
#028102



Electrode TIS
#025392



O-ring 3/8 inch ID 1/16 inch
#000329

This section relates to the IonDrive™ Turbo V Ion Source (#5019350), compatible with the **SCIEX Triple Quad 6500, SCIEX Triple Quad 6500+, QTRAP 6500 and QTRAP 6500+ systems:**

OptiFlow Turbo V ion source parts

Description	Part no.
Assembly optiflow infusion adapter	5062986
Electrode starter pack – custom	5061577
Fitting 3 8 bottom	5060677
Fitting 10-32 thread 1/16 inch tube 8.0 NI PEEK natural	5063325
Fitting column snap ext	5060978
Fitting fingertight for 1/16 inch OD tube 10-32 PEEK	5023999
Fitting pre column 10-32 thread 0.5 µm 1.3 µL PEEK	5063326
Fitting snap in ferrule 1/16 inch tubing PEEK	5053325
Fitting tee 0.25 mm bore 1/16 PEEK	5063327
Kit consumable	5063330
SteadySpray analytical probe >50 µL/min	5066023
SteadySpray micro probe 1-50 µL/min	5066025



Fitting PEEK 10/32 x 1/16 inch,
#016325



Fitting union 0.15 mm bore
#018786

IonDrive ion source parts

Description	Part no.
Electrode, neb	025388
Electrode, TIS	025392
FRU kit neb needle	5051034
FRU, kit APCI heater	028102
Kit, upgrade turbo heater	5027502
Kit, heater cartridge replacement connector (IonDrive™)	5054661
Kit, MS essentials	5058495
Kit, MS electrode turbo essentials	5058491
Essential MS IonDrive heater kit	5062313
OPT, kit neb probe	5051075
OPT, kit turbo probe	5050361
OPT, FRU assembly sources	5031503
Spring, gold plated BOM	027497
Tube, ceramic	1030403

IonDrive Source vacuum parts

Description	Part no.
Fitting, barb 2	027420
O-ring, 7/16 inch ID x 1/16 inch w Viton	000309
O-ring, 3/8 inch ID x 1/16 inch w Viton	000329
O-ring, 7/8 inch ID x 1/16 inch w Viton	5050957
O-ring, 1/4 inch ID X 1/16 inch w Viton	000361
O-ring, 3/16 inch ID x 1/16 inch w Viton	003403
O-ring, 3 mm ID X 1 mm w Viton	017819
O-ring, 3.73 inch ID x 1/16 inch W Viton	025727
O-ring, 112 mm ID x 3 mm w Viton	5043573
O-ring, 7/16 inch ID x 1/16 inch w Teflon	027473
O-ring, 20 mm ID x 1 mm w Viton	027818
Tube, 1/16 inch ID x 1/8 inch OD Viton	5046352

DuoSpray Turbo V ion source and Turbo V ion source (for the X500 series)

This section relates to the DuoSpray™ Turbo V Ion Source (#1039454), compatible with the **SCIEX TripleTOF 4600, TripleTOF 5600, TripleTOF 5600+ and TripleTOF 6600 systems:**

DuoSpray source parts

Description	Part no.
Electrode, neb ✓	025388
Electrode, TIS ✓	025392
FRU kit neb needle ✓	5051034
FRU, kit APCI heater ✓	028102
Kit, upgrade turbo heater	5027502
Kit, heater cartridge replacement	5051082
Kit, MS essentials ✓	5058495
Kit, MS ceramic heater essentials ✓	5058494
Kit, MS metal heater essentials ✓	5062269
Kit, MS electrode turbo essentials ✓	5058491
OPT, kit neb probe ✓	5051075
OPT, kit turbo probe ✓	5050361
OPT, FRU assembly sources ✓	5048131
Tube, ceramic	1030403

DuoSpray source vacuum parts

Description	Part no.
Fitting, barb 2	027420
O-ring, 7/16 inch ID x 1/16 inch w Viton	000309
O-ring, 3/8 inch ID x 1/16 inch w Viton	000329
O-ring, 7/8 inch ID x 1/16 inch w Viton	5050957
O-ring, 1/4 inch ID X 1/16 inch w Viton	000361
O-ring, 3/16 inch ID x 1/16 inch w Viton	003403
O-ring, 3 mm ID X 1 mm w Viton	017819
O-ring, 3.73 inch ID x 1/16 inch w Viton	025727
O-ring, 112 mm ID x 3 mm w Viton	5043573
O-ring, 7/16 inch ID x 1/16 inch w Teflon	027473
O-ring, 20 mm ID x 1 mm w Viton	027818
Tube, 1/16 inch ID x 1/8 inch OD Viton	5046352



Fitting PEEK 10/32 x 1/16 inch #016325



Tube 1/16 OD x .0005 bore #016316



Quartz tube #017765

This section relates to the Turbo V™ Ion Source (#5043208), compatible with the **X500R and X500B QTOF systems:**

Turbo V ion source parts (for the X500 series)

Description	Part no.
Assembly, APCI twin electrode	5045380
Assembly, ESI twin electrode	5044626
FRU kit neb needle ✓	5051034
FRU, kit APCI heater ✓	028102
Kit, APCI twin sprayer probe tested	5057681
Kit, ESI twin sprayer probe tested	5056403
Kit, heater cartridge replacement	5051082
Kit, MS essentials ✓	5058495
Kit, MS electrode turbo essentials ✓	5058491
Spring, comp 0.148 inch OD x .5L MW	027013
Spring, comp 1 inch dia x .5 inch H FW SS	027438
Spring, custom HT	026626
Spring, EXT 3.18 OD x 25.4 LG SS	027477
Spring, gold plated BOM	027497
Tube, ceramic	1030403



Fitting union 0.15 mm bore #018786

Turbo V ion source vacuum parts (for the X500 series)

Description	Part no.
Fitting, barb 2	027420
O-ring, 7/16 inch ID x 1/16 inch w Viton	000309
O-ring, 3/8 inch ID x 1/16 inch w Viton	000329
O-ring, 7/8 inch ID x 1/16 inch w Viton	5050957
O-ring, 1/4 inch ID X 1/16 inch w Viton	000361
O-ring, 3/16 inch ID x 1/16 inch w Viton	003403
O-ring, 3 mm ID X 1 mm w Viton	017819
O-ring, 3.73 inch ID x 1/16 inch w Viton	025727
O-ring, 112 mm ID x 3 mm w Viton	5043573
O-ring, 7/16 inch ID x 1/16 inch w Teflon	027473
O-ring, 20 mm ID x 1 mm w Viton	027818
Tube, 1/16 inch ID x 1/8 inch OD Viton	5046352



O-ring 3/8 inch ID 1/16 inch #000329

ExionLC systems

ExionLC AD system

Pump parts (LC-30AD)

Description	Part no.
Check valve out	4466465
Filter, suction filter assembly LC-20	4426107
Kit, ExionLC essentials ✓	5045277
Kit, ExionLC essentials complete ✓	5047079
Filter, improved stainless	4426106
Seal, plunger seal PE	4427161
Tubing, sus, 0.3 x 700	4466311
Part check valve inlet lc-30ad	5028962
Plunger for Lc-30ad incl. hldr assembly and diaphragm	5041624
Line filter for Lc-30Ad SS	5041623
Seal, plunger seal with backup ring	5050410
Diaphragm, rinse diaphragms	4425151
Check valve, out-spb-1.5	4426105
Valve LC-20ADXR drain valve assembly	5039234
Tube, ceramic	1030403

Autosampler parts (SIL-30ACMP)

Description	Part no.
Cap, port cap w/hole	4426132
Cap, rinse port cap Teflon no hole	4426125
Needle seal	5041626
Plunger, plunger 10AS assembly	4425120
Seal, seal 42429	4425339
Sample loop assembly 50	4427179
Rotor low pressure VLV	5041628
Rotor for high pressure VLV	5041627
Needle coated injection ndl kit	5041629
Tubing, SUS 0.1 x 600 mm	4461715

Other parts

Description	Part no.
Assembly 65UM ESI electrode ✓	5029342
Ferrule* 1/16 inch 3 pack SS	4462590
Filter, suction filter assembly LC20	4426107
Fuse, 218 06.3P	4412723
Fuse, 218 3.15P	4412721
Lubricant, fortified grease	4426274
Lubricant, daphne oil 5 mL for pump cam assembly	5045313
Ferrule, 3.0F-T Teflon	4426171



Seal, plunger seal pe
#4427161



Needle, Shimadzu grind
coating needle 20A
#4425415



Filter, line filter assembly
#4425351

ExionLC AC system

Pump parts (LC-20ACXR)

Description	Part no.
Check valve, IN-XR assembly	5039288
Check valve, out-spb-1.5	4426105
Diaphragm, rinse diaphragms	4425151
Filter, line filter assembly	4425351
Filter, suction filter assembly LC-20	4426107
Filter, improved stainless	4426106
Holder, plunger	4425979
Kit, ExionLC ACXR essentials	5045276
Kit, ExionLC ACXR essentials complete	5050502
Kit, ExionLC prominence 20 essentials	5045275
Lubricant, grease 25 gms	4426094
Plunger, sapphire plunger assembly	4425124
Seal, plunger seals GFP (black)	4425353
Seal, plunger seal PE	4427161
Valve, drain valve DB assembly	4426024
Valve LC-20ADXR drain valve assembly	5039234

Autosampler parts (SIL-20ACXR)

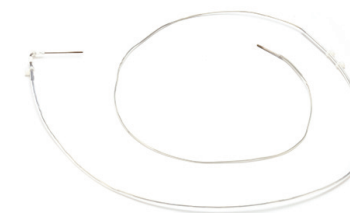
Description	Part no.
Rotor, Shimadzu LPV PEEK wide LC-2010	4427782
Seal, Shimadzu seal 42429	4425339
Plunger, Shimadzu plunger 10AS assembly	4425120
Needle, Shimadzu grind coating needle	4425415
Kit, Shimadzu needle seal	4427777
Seal, Shimadzu needle seal	4427091
Stator HP valve	5040857
Rotor, Shimadzu HPV rotor	4427778
Sample loop, Shimadzu sample loop assembly 50	4427179
Sample loop, Shimadzu sample loop assembly 100	4426016
500 µL sample loop	4425938
2 mL sample loop	4425939

SFT QC kits

Description	Part no.
Essential LC-MS performance kits (environmental)	5056819
Essential LC-MS performance kits (peptide)	5056815
Essential LC-MS performance kits (sm pharma)	5056816
Essential LC-MS performance kits (toxicology)	5056822



Rotor, Shimadzu lpv PEEK
wide LC-2010
#4427782



Shimadzu sample loop
assembly 100
#4426016

ExionLC 100 and Eksigent HPLC systems

ExionLC 100 system parts

Description	Part no.
Filter, improved stainless	4426106
Seal, plunger seals GFP (black)	4425353
Check valve, Shimadzu out-SPB-1.5	4426105
Valve, drain valve DB assembly	4426024
Filter, line filter assembly	4425351
Rotor, lpv PEEK wide lc-2010	4427782
Seal 42429	4425339
Plunger, plunger 10AS assembly	4425120
Seal, xr needle seal	4427091
Cap, rinse port cap Teflon no hole	4426125
Cap, port cap w/hole	4426132
Gasket, -01 2PC	4425123
Window, optical window std cell	4412819
Lens, (R4, RD6)	4412685



Eksigent HPLC system parts

Description	Part no.
1/32 in PEEK nut with glass-filled PEEK ferrule - 10 pkg (NanoLC 400)	5019621
5 Pk, ferrule, 1/32 inch PEEKsil to 1/16 inch 10-32 port (NanoLC 400)	5019820
50 Micron ESI electrode, serviceable (M3 MicroLC, M5 Micro LC)	5028466
50 ml syringe for AS2 autosampler (NanoLC Ultra)	5016574
Assembly 25 ESI electrode serviceable (NanoLC 200)	5028467
Needle seal 22 gauge for Rheodyne 1/32	5052374
Electrode ESI - 65 µM (M3 MicroLC, M5 Micro LC)	5029342
Ekspert NanoLC 400 HPLC solvent organizer (NanoLC 400)	5017921
Fitting ferrule 1/32 inch 10pk SS Ekspert NanoLC	910-00087
Kit, grounding, electrode to source (all)	5016941
Kit high micro gradient flow module Quattro (NanoLC 400)	5018238
Kit low micro gradient flow module Quattro (NanoLC 400)	5018237
Kit nano gradient flow module Quattro (NanoLC 400)	5018236
NanoLC 400 microLC starter kit (NanoLC 400)	5025379
Nano spray tip 360/20 µm ID/OD, 20pk (NanoLC)	910-00052
Nut, 1/32 inch, 0.45 inch l, 10pk (NanoLC 400)	910-00085
Rotor seal for 6-port valve (NanoLC 400)	2002.52
Sample needle 845 2.4 µL 1/32 inch, SP (NanoLC Ultra)	620-00148
Sample needle PEEKsil, 3.6 µL (NanoLC 400)	950.325
Seal - Titan HT (NanoLC 200)	200-00326
Sleeve, PEEK, 1/32 inch OD, .015 inch ID, 10pk (NanoLC 400)	910-00088
Snap cap/split SEPTA - 100pk (NanoLC 400)	910-00103
Stator for uUHPLC 6 port 12k PSI valve (NanoLC 400)	2002.521
Stator for uUHPLC 10 port 10k PSI valve (NanoLC 400)	2002.523
Syringe, 25 µL (NanoLC 400)	620-00064
Transfer capillary, 50 m ID, 2 m long (NanoLC 400)	910-00002
Tubing, PEEKsil, 1/32 inch OD x 50 µm id x 30 cm long (M3 MicroLC, M5 Micro LC)	205-00040
Tube, PEEKsil, 50 µm ID, 1/32 inch OD, 50 cm (NanoLC 400)	205-00041
Tube, PEEKsil, 50 µm ID, 75 cm l, 1/32 inch OD, NAT (NanoLC 400)	205-00049
Tube, PEEKsil, 50 µm ID, 1/32 inch OD, 10 cm (M3 MicroLC, M5 Micro LC)	205-00069
Union reducing 1/32 inch to 360 micron SS (NanoLC 400)	200-00407
Valve Titan HT - 6-32 (M3 MicroLC, M5 Micro LC)	200-00417
Vial, PP, 11 mm, 250 µL - 100pk (NanoLC 400)	910-00104



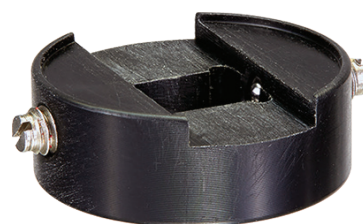
Capillary electrophoresis systems

CESI 8000/CESI 8000 Plus/PA 800 Plus/P/ACE MDQ Plus capillary electrophoresis systems

Description	Part no.
Aperture cartridge slit 100 x 200 Micron	144558
Cable assembly, fiber optic UV	144093
Cable, fiber optic/DAD	144094
Cartridge, optical 100 x 800u	144660
Cartridge rebuild kit	144645
Cartridge, slit 100 x 800 Micron	144330
Coolant, capillary cartridge, 450 mL	359976
Electrode assembly	A47775
Filter 200 nm	144430
Filter 214 nm	144437
Filter 220 nm	144432
Filter 230 nm	144433
Filter 254 nm	144438
Filter 280 nm	144439
Filter band pass 520 nm	144940
Filter emission 560 nm	149068
Filter notch 488 nm	144941
Insertion lever interface parts kit	A95348
Kit, d2 lamp replacement	144667
Laser module, 488nm, service replacement, packaged	A59493
LEF upgrade module for PS 800 and PA 800 plus series	969136
LIF 2 color upgrade kit	144951
LIF cartridge aperture plug assembly	721125
Packaged laser module upgrade kit, 488nm, single color	A59494
PCR vials (bag of 100)	144709
Photodiode array detector upgrade (CESI and MDQ Plus only)	B68372
Pre-assembled BFS capillary cartridge	A55625
Probe guide assembly, service replacement	721126
Sample tray holder assembly	C04895
Software key, reprocessing	B78399
Vial, common, molded - bag of 100 (PA 800 and MDQ Plus only)	A62251
Vial holder assembly, 6 x 6	A94462
Vial holder assembly, 6 x 8	A94461
Universal vial cap - qty. 100 (PA 800 and MDQ Plus only)	A62250



Vial holder assembly, 6 x 6
#A94462



Probe guide assembly, service replacement
#721126



Packaged laser module upgrade kit, 488nm, single color
#A59494

CESI 8000/CESI 8000 Plus systems

Description	Part no.
Cap, CESI (pkg 100)	B24699
nanoVial (pkg 100)	5043467
Neutral surface cartridge	B07368
Optims adapter for Thermo nanospray II MS Source	B07366
Optims adapter kit for Bruker MS	B86099
Optims adapter for SCIEX NanoSpray® Ion Source III	B07363
Optims adapter kit with stage for Waters MS	B85397
Silica surface cartridge, 30 µm ID x 90 cm total length, OPTIMS	B07367
Vial, CESI (pkg of 100)	B11648



Optims adapter for Thermo nanospray II MS source
#B07366



Silica surface cartridge, 30 µm ID X 90 cm total length, optims
#B07367

GenomeLab GeXP genetic analysis/CEQ systems

Description	Part no.
96-well plates, ps nonsterile (100)	609844
DNA sep cap array 33-75b	608087
DNA size standard kit 400BP	608098
DNA size standard kit 600BP	608095
DNA size standard kit 80BP	608395
GenomeLab™ separation buffer, 4/pk	608012
Mineral oil	608114
Sample loading solution 6.0 mL	608082
Sample microtiter plate 25 pk	609801
Separation gel - LPAI 10 mL	608010
Separation gel - LPAI 20 mL	391438

Phenomenex SecurityLINK and SecurityCAP systems

The SecurityLINK UHPLC fingertight fitting system simplifies your system and column connections and provides consistent performance with torque-limiting technology that prevents column-damaging overtightening.

SecurityLINK parts (outside diameter 1/16 inch with 10-32 fittings)

Description	Part no.
Stainless steel 100 µm ID dual fitting 150/250/350/500/600 mm	AJ1-1421/AJ1-1441/AJ1-1461/AJ1-1471/AJ1-1481
Stainless steel 125 µm ID dual fitting 150/250/350/500/600 mm	AJ1-1521/AJ1-1541/AJ1-1561/AJ1-1571/AJ1-1581
Stainless steel 254 µm ID dual fitting 150/250/350/500/600 mm	AJ1-1621/AJ1-1641/AJ1-1661/AJ1-1671/AJ1-1681
PEEKsil 25 µm ID dual fitting 100/150 mm	AJ1-2111/AJ1-2121
PEEKsil 25 µm ID single fitting 150 mm	AJ1-2124
PEEKsil 25 µm ID dual fitting 250/300/500 mm	AJ1-2141/AJ1-2151/AJ1-2171
PEEKsil 25 µm ID single fitting 500 mm	AJ1-2174
PEEKsil 25 µm ID dual fitting 750 mm	AJ1-2191
PEEKsil 25 µm ID single fitting 750 mm	AJ1-2194
PEEKsil 25 µm ID dual fitting 1000 mm	AJ1-21A1
PEEKsil 25 µm ID single fitting 1000 mm	AJ1-21A4
PEEKsil 50 µm ID dual fitting 100/150 mm	AJ1-2211/AJ1-2221
PEEKsil 50 µm ID single fitting 150 mm	AJ1-2224
PEEKsil 50 µm ID dual fitting 200/250/300/500 mm	AJ1-2231/AJ1-2241/AJ1-2251/AJ1-2271
PEEKsil 50 µm ID single fitting 500 mm	AJ1-2274
PEEKsil 50 µm ID dual fitting 750 mm	AJ1-2291
PEEKsil 50 µm ID single fitting 750 mm	AJ1-2294
PEEKsil 50 µm ID dual fitting 1000 mm	AJ1-22A1
PEEKsil 50 µm ID single fitting 1000 mm	AJ1-22A4
PEEKsil 75 µm ID dual fitting 150 mm	AJ1-2321
PEEKsil 75 µm ID dual fitting 250/500/100 mm	AJ1-2341/AJ1-2371/AJ1-23A1
PEEKsil 100µm ID dual fitting 100/150/250/350/500/1000 mm	AJ1-2411/AJ1-2421/AJ1-2441/AJ1-2461/AJ1-2471/AJ1-24A1
PEEK-lined SS 25 µm ID dual fitting 150/250/350/500/600 mm	AJ1-3121/AJ1-3141/AJ1-3161/AJ1-3171/AJ1-3181
PEEK-lined SS 50 µm ID dual fitting 150/250/350/500/600 mm	AJ1-3221/AJ1-3241/AJ1-3261/AJ1-3271/AJ1-3281
PEEK-lined SS 75 µm ID dual fitting 150/250/350/500/600 mm	AJ1-3321/AJ1-3341/AJ1-3361/AJ1-3371/AJ1-3381
PEEK-lined SS 100 µm ID dual fitting 150/250/350/500/600 mm	AJ1-3421/AJ1-3441/AJ1-3461/AJ1-3471/AJ1-3481



SecurityLINK

SecurityCAP mobile phase and solvent waste safety caps inhibit dangerous vapors and gases from leaving HPLC/UHPLC solvent reservoirs. Over time, these chemicals can have a negative impact on the health of all employees and visitors in the lab.

SecurityCAP parts

Description	Part no.
GPI/GL 38 adaptor cap thread adapter, PTFE, GPI/GL 38 female to GL45 male	AC2-1138
Waste adaptor for male 1/4in NPT-port (PTFE)	AC3-1111
Barbed connector for 5-8 mm ID tubing (PTFE), (white), ea	AC3-1001
Y-connector for 6-8 mm ID tubing (POM), white	AC3-1301
Waste safety filter 3-month exhaust filter for SecurityCAP, 1/4 inch-28 threads	AC1-0131
Waste safety filter 3-month exhaust filter for wide-port CAPs, GL14 threads	AC1-0132
Waste safety filter 6-month exhaust filter for SecurityCAP, 1/4 inch-28 threads	AC1-0161
Waste safety filter 6-month exhaust filter for wide-port CAPs, GL14 threads	AC1-0162
Waste safety filter 3-month exhaust filter for SecurityCAP, 1/4 inch-28 threads	AC1-0331
Waste safety filter 3-month exhaust filter for wide-port caps, GL14 threads	AC1-0332
Waste safety filter 6-month exhaust filter for SecurityCAP, 1/4 inch-28 threads	AC1-0361
Waste safety filter 6-month exhaust filter for wide-port caps, GL14 threads	AC1-0362
Mobile phase safety filter 6-month capacity, 1/4 inch-28 threads	AC2-0161
Mobile phase safety filter 6-month capacity, 1/4 inch-28 threads	AC2-0961
Fitting for 1/16 inch or 2.0 mm OD tubing, 1/4 inch - 28 threads (POM), blue, ea	AC3-1101
Fitting for 2.3-2.6 mm OD tubing, 1/4 inch -28 threads (POM), white, ea	AC3-1201
Fitting for 1/8 inch OD tubing, 1/4 inch - 28 threads (POM), black, ea	AC3-2101
Waste starter kit 2-port GL/DIN45 cap and 6-month exhaust filter + barbed connector	AC1-1245
Waste starter kit 5-port GL/DIN45 cap and 6-month exhaust filter	AC1-1545
Waste starter kit 5-port DIN51 cap and 6-month exhaust filter	AC1-1551
Waste starter kit 5-port 53b cap and 6-month exhaust filter	AC1-1553
Waste starter kit 5-port DIN60/61 cap and 6-month exhaust filter	AC1-1561
Mobile phase starter kit 2-port GL45 cap and 6-month safety filter	AC2-1245
Mobile phase starter kit 3-port GL45 cap and 6-month safety filter	AC2-1345
Mobile phase starter kit 4-port GL45 cap and 6-month safety filter	AC2-1445
Mobile phase starter kit 5-port GL45 cap and 6-month safety filter	AC2-1545
Mobile phase starter kit 5-port DIN60/61 cap and 6-month safety filter	AC2-1561
Mobile phase starter kit 2-port Merck s40 caps (x4) and 6-month safety filter (x4)	AC2-4240
Mobile phase starter kit 2-port GL45 caps (x4) and 6-month safety filter (x4)	AC2-4245
Mobile phase starter kit 3-port GL45 caps (x4) and 6-month safety filter (x4)	AC2-4345
Mobile phase starter kit 4-port GL45 cap (x1) and 2-port cap (3x) and 6-month safety filter (x4)	AC2-4445
Sealing plug 1/4 inch-28 threads (POM), white	AC3-2001

SecurityCAP



SCIEX Now support network

The destination for all your support needs



Data Integrity
Our custom security services give you peace of mind and be assured that your data is always secure and compliant.

Onboarding
You are automatically registered to SCIEX Now Online, enrolled to your Learning Hub learning path, and set you up for success.

Lab enhancement services
A holistic approach to your lab to increase productivity and reduce system downtime. We help you meet tight deadlines, improve the quality of results and ultimately increase your profit.

Learning Hub
Best-in-class content, personalized learning paths - delivered using the latest memory science techniques.

Self-help resources
Our knowledge base and community help you move your science forward and find the answers you need from SCIEX experts as well as your peers.

Workflow support
Whatever your challenge, the SCIEX Support team is here to help you achieve your scientific goals quickly and efficiently.

Start your path to success now: [sciex.com/sciexnow](https://www.sciex.com/sciexnow)

The SCIEX clinical diagnostic portfolio is For In Vitro Diagnostic Use. Rx Only. Product(s) not available in all countries. For information on availability, please contact your local sales representative or refer to www.sciex.com/diagnostics. All other products are For Research Use Only. Not for use in Diagnostic Procedures. Trademarks and/or registered trademarks mentioned herein, including associated logos, are the property of AB Sciex Pte. Ltd. or their respective owners in the United States and/or certain other countries (see www.sciex.com/trademarks). © 2023 DH Tech. Dev. Pte. Ltd.

GEN-MKT-03-6868-C 10/2023

Headquarters
500 Old Connecticut Path
Framingham, MA 01701 USA
Phone 508-383-7700
[sciex.com](https://www.sciex.com)

International Sales
For our office locations please call the division headquarters or refer to our website at [sciex.com/offices](https://www.sciex.com/offices)

