

**Analyst® 1.6 Software with Components for 6500  
Series Instruments**

*Release Notes — Components for 6500 Series Instruments*



---

This document is provided to customers who have purchased AB Sciex equipment to use in the operation of such AB Sciex equipment. This document is copyright protected and any reproduction of this document or any part of this document is strictly prohibited, except as AB Sciex may authorize in writing.

Software that may be described in this document is furnished under a license agreement. It is against the law to copy, modify, or distribute the software on any medium, except as specifically allowed in the license agreement. Furthermore, the license agreement may prohibit the software from being disassembled, reverse engineered, or decompiled for any purpose.

Portions of this document may make reference to other manufacturers and/or their products, which may contain parts whose names are registered as trademarks and/or function as trademarks of their respective owners. Any such use is intended only to designate those manufacturers' products as supplied by AB Sciex for incorporation into its equipment and does not imply any right and/or license to use or permit others to use such manufacturers' and/or their product names as trademarks.

AB Sciex makes no warranties or representations as to the fitness of this equipment for any particular purpose and assumes no responsibility or contingent liability, including indirect or consequential damages, for any use to which the purchaser may put the equipment described herein, or for any adverse circumstances arising therefrom.

**For research use only. Not for use in diagnostic procedures.**

The trademarks mentioned herein are the property of AB Sciex Pte. Ltd. or their respective owners.  
AB SCIEX™ is being used under license.



# Contents

<b>Chapter 1 Analyst 1.6 Software with Components for 6500 Series Instruments</b> .....	<b>5</b>
Introduction .....	5
Support .....	5
Software Documentation .....	5
Prerequisites .....	6
Operating System Requirements .....	6
Supported Computer Models .....	6
Software Compatibility .....	6
Supported Mass Spectrometers .....	7
Contents of the 6500 Series Components Web Download Package .....	7
Install the Analyst 1.6 Software Components for 6500 Series Instruments .....	7
Patches Removed During Installation .....	8
Remove the Analyst 1.6 Software Components for 6500 Series Instruments and Revert to Analyst 1.6 Software .....	9
Remove and Install the Analyst 1.6 Software Components for 6500 Series Instruments .....	10
New System Features .....	10
Fixed Issues .....	13
Known Issues and Limitations .....	15
Common Questions .....	18
<b>Chapter 2 Peripheral Devices and Firmware</b> .....	<b>19</b>
Recommended Firmware Versions for Peripheral Devices .....	19
<b>Chapter 3 File Summary</b> .....	<b>21</b>
Instrument Files .....	21
Application Files .....	21
Firmware Files .....	21
Method Tables .....	22
Methods .....	23
Settings .....	24
Scripts .....	25
Documentation Files .....	25
<b>Chapter 4 Updated File List</b> .....	<b>27</b>



## Introduction

The Analyst® 1.6 Software with Components for 6500 Series Instruments provides support for acquisition and processing for the QTRAP® 6500 System and the AB SCIEX Triple Quad™ 6500 System.

This guide provides information about and procedures for installing the Analyst 1.6 Software Components for 6500 Series Instruments. This guide also describes new features introduced in this version of the Analyst software as well as ways to troubleshoot possible issues.

To make sure that the software installation is successful, read [Install the Analyst 1.6 Software Components for 6500 Series Instruments on page 7](#) of this document. For more information about installing the Analyst 1.6 software, see the *Analyst Software Installation Guide*.

Users should use these release notes for reference as an appendix to the *Release Notes* for the Analyst 1.6 Software as they become familiar with the software and for future reference.

## Support

At AB SCIEX, we are committed to providing the highest level of support for our Analyst software users. To obtain answers to questions about any of our products, report problems, or suggest improvements, visit [www.absciex.com](http://www.absciex.com), or contact an AB SCIEX sales representative or Technical Support using [support@absciex.com](mailto:support@absciex.com). For on-site service, support, and training, visit [www.absciex.com/Support-and-Training](http://www.absciex.com/Support-and-Training).

## Software Documentation

The software documentation is automatically installed with the software and can be found at the following locations:

- **Start menu:** Programs menu > AB SCIEX > Analyst
- **Application folder:** C:\Program Files\Analyst\Help

For a complete list of software documentation, see the *Analyst Software Installation Guide*.

Six new documents are also automatically installed with this version of the Analyst software:

- Start > Programs menu > AB SCIEX > Analyst > Software Guides location
  - 6500 Series of Instruments System User Guide
  - SelexION Technology User Guide
  - Advanced User Guide
- Start > Programs menu > AB SCIEX > Analyst > Qualified Maintenance Guides location
  - 6500 Series of Instruments Qualified Maintenance Person Guide

- Start > Programs menu > AB SCIEX > Analyst > Ion Source Guides location
  - IonDrive™ Turbo V Ion Source Operator Guide
  - PhotoSpray® Ion Source Operator's Guide
  - DuoSpray™ Ion Spray Operator's Guide
  - Turbo V™ Ion Source Operator's Guide
  - NanoSpray® Ion Source Operator's Guide
  - Ion Source Specifications
- Start > Programs menu > AB SCIEX > Analyst > Site Planning Guides location
  - 6500 Series of Instruments Site Planning Guide
- Start > Programs menu > AB SCIEX > Analyst location
  - Release Notes - Components for 6500 Series Instruments

## Prerequisites

- Read the *Analyst Software Installation Guide* for the Analyst 1.6 Software.
- Read the *Release Notes* for the Analyst 1.6 Software.
- Install the Analyst 1.6 Software on workstations where the Analyst 1.6 Software Components for 6500 Series Instruments will be installed.

## Operating System Requirements

For operating system requirements, see the *Analyst Software Installation Guide* for the Analyst 1.6 software.

## Supported Computer Models

As of the software release date, the Analyst 1.6 Software Components for 6500 Series Instruments has been tested and verified for compatibility with the following computer model:

- Dell Optiplex 990

Newer systems might be available. For more information, contact an AB SCIEX sales representative.

## Software Compatibility

As of this release, the following software versions are compatible with the Analyst 1.6 Software Components for 6500 Series Instruments:

- MultiQuant™ 2.1.1 software
- Reporter 3.2 Software

Contact an AB SCIEX sales representative or Technical Support using [support@absciex.com](mailto:support@absciex.com) to inquire about the compatibility of other applications.

## Supported Mass Spectrometers

The QTRAP® 6500 system and the AB SCIEX Triple Quad™ 6500 system (including SelexION™ Technology) are the only instruments supported by the Analyst 1.6 Software with Components for 6500 Series Instruments. Although users will be able to configure and activate hardware profiles using other mass spectrometer models, only the 6500 series of instruments have been verified and validated using this software. The manufacturer does not recommend the use of the software with any other instrument model, and users who choose to operate the software with an unsupported mass spectrometer model do so at their own risk.

## Contents of the 6500 Series Components Web Download Package

The following software applications, files, folders, and documents are included in the Analyst 1.6 Software Components for 6500 Series Instruments web download package:

- Analyst 1.6 Software Components for 6500 Series Instruments launcher.
- *Release Notes - Components for 6500 Series Instruments.pdf* (this document).
- The Bin folder containing the files required to run the software.
- An Install folder containing the software files, scripts, and Microsoft update for digital signatures. The Scripts folder, contains the following two subfolders:
  - The Purge subfolder, which contains the Purge Modifier script and the related dlls. For more information, refer to [Scripts on page 25](#).
  - The Convert Methods subfolder, which contains the installer for the Convert Methods script. For more information, refer to [Scripts on page 25](#).
- The Extras folder with the following subfolder:
  - The AAO subfolder containing the AAO User Guide and AAO Release Notes.

## Install the Analyst 1.6 Software Components for 6500 Series Instruments

The manufacturer recommends that users perform the following procedure before installing the Analyst® 1.6 Software Components for 6500 Series Instruments.

### To prepare for the installation of the Analyst 1.6 Software Components for 6500 Series Instruments

1. Read these release notes.
2. Make sure that the Analyst 1.6 software is properly installed. For more information, refer to the *Analyst Software Installation Guide*.



---

**Note:** Do not rename the existing Analyst Data folder. It is required for proper installation of the Analyst 1.6 Software Components for 6500 Series Instruments.

---

3. Make sure that all data in the Analyst Data folder is backed up safely. Backing up data is recommended prior to any software installation. For more information, refer to the *Analyst Software Installation Guide*.
4. Make sure that the user installing the software has Administrator privileges for the computer where this software needs to be installed.
5. Deactivate any active hardware profile in the Analyst 1.6 software, before installing the Analyst 1.6 Software Components for 6500 Series Instruments.
6. Close the Analyst 1.6 software.

### To install the Analyst 1.6 Software Components for 6500 Series Instruments

The Analyst 1.6 Software Components for 6500 Series Instruments installer is accessed through the Launcher application located on the root of the download package available from the AB SCIEX Web site.



---

**Note:** This document assumes that the software has already been downloaded from the AB SCIEX Web site and extracted to the local hard drive. If this has not yet been done, navigate to <http://www.absciex.com/downloads/software-downloads> and then click the link to download the installer package. After the file has downloaded, double-click the self-extracting .exe file to extract the installer to the local hard disk.

---

1. Log on to the computer as a user with local administrator privileges.
2. Navigate to the folder where the Analyst 1.6 Software Components for 6500 Series Instruments software has been extracted.
3. Double-click the **Launch.exe** application.
4. Click the **Install Version 1.6 with Components for 6500 Series Instruments** link. The Installer Wizard opens.
5. Follow the instructions provided in the wizard.



---

**Note:** In the Add or Remove Programs area of the Windows XP Control Panel and the Programs and Features area of the Windows 7 Control Panel, users will see two entries for the Analyst software after installation is complete: one for the Analyst 1.6 Software and the other for the Analyst 1.6 Software Components for 6500 Series Instruments.

---

For more information about the files installed, refer to [Chapter 3](#) and [Chapter 4](#).

## Patches Removed During Installation

During the installation of the Analyst 1.6 Software Components for 6500 Series Instruments, the following patches are removed if they were installed on the system.

- Analyst 1.6 Patch for Agilent 1260 G4212B DAD
- Analyst 1.6 Patch for Agilent Devices
- Analyst 1.6 Patch for Agilent G4234 Column Selection Valve
- Analyst 1.6 Patch for MRM3 Optimization Script



- Analyst 1.6 Patch for Network Acquisition Filenames
- Analyst 1.6 Patch for SelexION Device Data Compatibility
- Analyst 1.6 Patch for Shimadzu SIL-30 ACMP
- Analyst 1.6 Patch for XIC Overlay

Unless noted otherwise, the functionality of these patches has been included in the Analyst 1.6 Software Components for 6500 Series Instruments.



---

**Note:** The Analyst 1.6 Patch for Agilent Devices, the Analyst 1.6 Patch for Agilent G4234 Column Selection Valve, and the Analyst 1.6 Patch for Network Acquisition Filenames are not included in the Analyst 1.6 Software Components for 6500 Series Instruments. If you need these patches, contact an AB SCIEX sales representative or Technical Support using [support@absciex.com](mailto:support@absciex.com).

---

## Remove the Analyst 1.6 Software Components for 6500 Series Instruments and Revert to Analyst 1.6 Software

1. Deactivate any hardware profile and then close the Analyst software.
2. Restart the computer.
3. Using the Add or Remove Programs utility in the Windows XP Control Panel or the Programs and Features utility in the Windows 7 Control Panel, click **Remove** for the Analyst 1.6 Software Components for 6500 Series Instruments.

The uninstall wizard starts.

After the Analyst 1.6 Software Components for 6500 Series Instruments is removed, the software returns to the Analyst 1.6 Software level. For more information, refer to [Chapter 3](#) and [Chapter 4](#).



---

**Note:** To use only the Analyst 1.6 software, remove the Analyst 1.6 Software Components for the 6500 series instruments and then remove and install the Analyst 1.6 software. The Analyst Data folder from the Analyst 1.6 Software Components for the 6500 series instruments must not be copied over the installed Analyst Data folder for Analyst 1.6 software. Some files created during the installation of the Analyst 1.6 Software Components for the 6500 series instruments might not be compatible with the Analyst 1.6 software.

---

4. Install all the patches that were available on the system and were removed during the installation of the Analyst 1.6 Software Components for 6500 Series Instruments. To view the list of patches that are removed, refer to [Patches Removed During Installation on page 8](#).

# Remove and Install the Analyst 1.6 Software Components for 6500 Series Instruments



**Note:** If you want to remove and then install the Analyst 1.6 Software Components for the 6500 series instruments, then you must also remove and install the Analyst 1.6 software. Make sure to back up the Analyst Data folder from the Analyst 1.6 Software Components for the 6500 software before removing any software. Install the Analyst 1.6 software before installing the Analyst 1.6 Software Components for the 6500 series instruments. You can then copy the backed up Analyst Data folder from the Analyst 1.6 Software Components for the 6500 software over the installed Analyst Data folder.

---

1. Deactivate any hardware profile and then close the Analyst software.
2. Restart the computer.
3. Make a backup copy of the Analyst Data folder.
4. Using the Add or Remove Programs utility in the Windows XP Control Panel or the Programs and Features utility in the Windows 7 Control Panel, click **Remove** for the Analyst 1.6 Software Components for 6500 Series Instruments.

The uninstall wizard starts.

After the Analyst 1.6 Software Components for 6500 Series Instruments is removed, the software returns to the Analyst 1.6 Software level. For more information, refer to [Chapter 3](#) and [Chapter 4](#).

5. Using the Add or Remove Programs utility in the Windows XP Control Panel or the Programs and Features utility in the Windows 7 Control Panel, click **Remove** for the Analyst 1.6 Software.
6. Install the Analyst 1.6 software.
7. Install the Analyst 1.6 Software Components for 6500 Series Instruments.
8. Copy the backed up Analyst Data folder over the installed Analyst Data folder.

## New System Features

These features are in addition to the features and enhancements listed in the Analyst 1.6 software release notes.

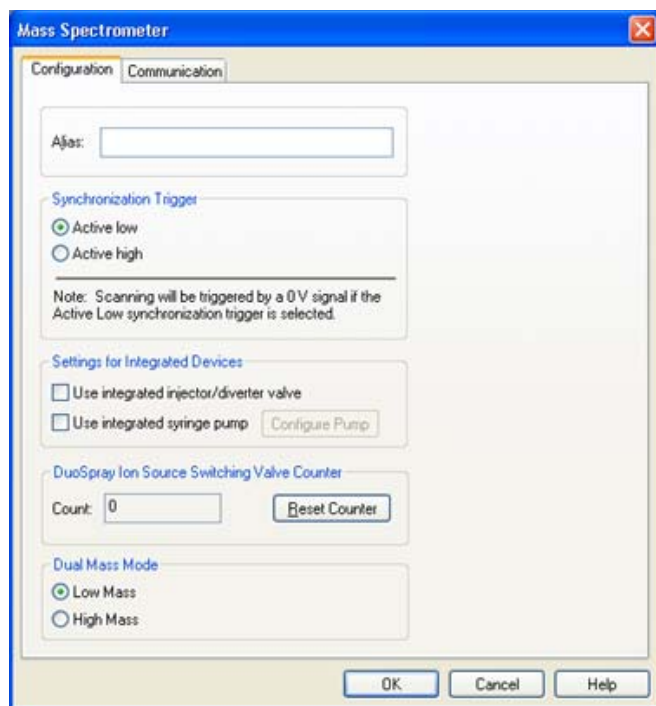
### Support for the 6500 Series Instruments

The Analyst 1.6 Software Components for 6500 Series Instruments adds support for the 6500 series of instruments, which can be used with or without Selexion™ technology. The software allows users to configure hardware profiles in two modes for each instrument:

- Low mass mode, which provides high sensitivity within the 5 to 1250 Da range for quadrupole scans and 50 to 1000 Da for LIT (linear ion trap) scans.
- High mass mode, which expands the mass range to 5 to 2000 Da for quadrupole scans and 50 to 2000 Da for LIT scans.

## Configuring the mass mode to be used for acquisition

To activate a hardware profile for the 6500 series of instruments, the mass mode must first be selected. This choice is located within the “Setup” page for the 6500 series of instruments. When configuring a hardware profile, select the mass spectrometer and then click “Setup Device” to open the configuration page. Use the Dual Mass Mode options located at the bottom of the dialog to select the mass mode.



**Note:** Users should create two hardware profiles for the mass spectrometer — one for high mass mode and the other for low mass mode. This will help to avoid inadvertently submitting methods for a mass mode that is different from the activated hardware profile.



**Note:** Users are unable to submit acquisition methods that do not match the currently configured mass mode. If the user attempts to submit a method that does not match the currently configured mass mode, on clicking the Submit tab, the user is presented with a message stating that the method is incompatible with the currently configured mass mode. Also, the Submit button is not active. Submission of the method will not be allowed.



**Note:** The Calibration Peak List for a low mass hardware profile for a 6500 series instrument displays some additional ions that exceed 1000 Da for the quadrupole mode or 1250 Da for the LIT mode (to view the calibration peak list, right-click in an open data file, click List Data, and then click Peak List tab). For example, in the case of PPG positive, the Calibration Peak List for a low mass hardware profile displays 1254, 1545, and 1952 masses. The presence of additional ions in the list does not affect the actual mass calibration of the instrument, and the additional ions are only displayed in the Calibration Peak List. The workflows for Reference tables in Calibrate from Spectrum and Tuning Options do not show additional ions in the low mass mode.

---

### Mass Mode is visible within the Analyst Software

After a hardware profile is activated, the mass mode of a 6500 series of instrument is visible to users from within the Analyst software. The Status display in the software has been updated to show the active mass mode, and the File Information section of acquired data files will also show which mass mode was used to acquire the data.

### Support for SelexION™ Technology

The SelexION technology can be used with the 6500 series of instruments. The SelexION technology allows the user to:

- Control and monitor all DMS-related parameters from within the Analyst software.
- Perform Compound Optimization for DMS parameters.
- Separate isobaric compounds using DMS technology.
- Use DMS parameters in IDA methods, including ramping Compensation Voltages.

For more information, refer to the SelexION Technology User Guide.

### Method Converter updated for 6500 Series Instruments

The Convert Methods script has been updated to allow conversion of existing methods to be used with the 6500 series of instruments. However, the Convert Methods script does not allow conversion of existing methods with mass ranges over 1250 Da into a type that is compatible with the low mass range 6500 series of instruments. In this case, the Save button in the script will not be active.

### Support for the IonDrive™ Turbo V Source

The 6500 Series instruments support the IonDrive™ Turbo V ion source. The source information will be visible in the Instrument Status window.

### MS3 scan type updated for 6500 Series Instruments

MS3 scan type has been updated for the 6500 series of instruments. The overall scan time for a mass range will be significantly shorter than on the 5500 series of instruments, which will result in more data points being acquired over the duration of the method acquisition.

### New AAO interfaces added

The Analyst 1.6 Software Components for 6500 Series Instruments adds two new AAO interfaces, to allow add-on applications to access features associated with the new mass modes

provided for the 6500 Series instruments. Refer to the AAO Release Notes and AAO User Guide for more information.

### **Shimadzu SIL-30ACMP and CTO-30AS**

The Analyst 1.6.1 software adds support for the Shimadzu SIL-30ACMP autosampler and CTO-30AS column oven.

## **Documentation Changes**

### **Combined Hardware- and Software-Specific Information for 6500 Series of Instruments into a Single Guide**

All the hardware- and software-specific information for the 6500 series of instruments has been combined into a single guide called the 6500 Series of Instruments System User Guide. The guide also contains basic information for setting up and using the Analyst software to create methods, acquire samples, and analyze data. This System User Guide replaces the Getting Started Guide for the 6500 series of instruments. The Getting Started Guide is still applicable to instruments other than the 6500 series of instruments.

### **Advanced User Guide**

A new guide called the Advanced User Guide has been created. It contains all the advanced information needed to set up and use the Analyst software to create methods, acquire samples and analyze data.

## **Fixed Issues**

### **Change to Quantitation Fix introduced in Analyst 1.5.2 HotFixes to February 2011 software**

In the Analyst 1.5.2 HotFixes to February 2011 software, a fix was introduced to allow the use of the Sum Multiple Ions feature with compressed data. This fix has been improved upon. This change has no effect on quantitation results. (TT 31956)

### **Improved support for Agilent 1260 DAD**

The Agilent 1260 G4212B DAD was introduced in the Analyst 1.5.2 software. However, users were not able to reliably activate the device or use it for acquisitions. This issue has been fixed. (TT 33318)

### **Shimadzu Nexera POST treatment is now supported**

In the Analyst 1.6 software, it was recommended to make sure that post-injection wash cycles were completed before the end of the mass spectrometer acquisition to avoid errors. The Analyst 1.6 Software Components for 6500 Series Instruments allows users to use post-injection wash cycles of any length with the Shimadzu Nexera devices. Wash cycles no longer need to be completed before the end of acquisition. (TT 33825)

### **Corrected MRM3 Optimization script issue on the Windows 7 operating system**

Occasionally when running the MRM3 Optimization script on the Windows 7 operating system, the script would stop responding during the optimization process. This issue has been fixed and the script now runs to completion. (TT 33878)

### **Unable to extract Multiple XICs to stacked panes**

In the Analyst 1.6 software, if users attempted to extract multiple ion chromatograms to individual panes, only one pane would contain an XIC; the rest would be blank. This issue has been fixed and the Extract XIC functionality has been restored. (TT 34196)

### **Method duration may be calculated incorrectly**

When calculating the expected duration of multi-period mass spectrometer acquisitions or acquisitions with polarity switching, there may have been a mismatch between the calculated number of cycles and method duration. As a result, acquisitions may have appeared to end early. There was no data lost as the number of cycles acquired was correct — the defect was graphical. This issue has been fixed and the expected duration now matches the calculated number of cycles. (TT 34541)

### **Method Converter**

Several fixes have been implemented in the Method Converter script for the Analyst 1.6 Software Components for 6500 Series Instruments:

- Various user interface corrections, such as spelling, punctuation, and so on.
- When converting MCA methods, the “Number of Scans to Sum” parameter was not transferred to the converted method. (TT 34788)

### **Column Oven Parameters Help topic updated**

The Analyst Help topic for Column Oven Parameters has been updated for clarity. (TT 34730)

### **No message displayed for source change when method editor active**

The Analyst 1.6 software introduced a change that inadvertently removed the user message when the source was removed or replaced while an acquisition method was open. This issue has been addressed, and users will again see a message if the source is removed. (TT 34919)

### **Scheduled MRM™ Algorithm: Unable to save method if RT < Half Detection Window**

The Analyst 1.6 software introduced a requirement that retention times for ions in *Scheduled* MRM™ algorithm methods had to be less than half of the user-set detection window. In response to customer feedback, this limitation has been removed. (TT 35095)

### **Text in Current Spectrum window may overlap in Instrument Optimization**

When running Instrument Optimization, users may have seen overlapping text in the Current Spectrum window. This issue has been fixed. (TT 35177)

### **Agilent 1260/1290 DAD: Data mismatch with Agilent Instant Pilot**

Recent firmware changes by Agilent have modified the scale used for absorbance data sent from the Agilent 1260 and 1290 DADs to the Analyst software. As a result, users may have seen a mismatch between the data shown in the Analyst software and the data shown on the Agilent Instant Pilot. This has been corrected and features have been implemented to make sure that scale changes will not affect the Analyst software data in the future. (TT 35191)



**Note:** The absorbance data as collected in the Analyst software was correct, but was scaled improperly. Because DAD data is relative, the data was internally consistent.

## Known Issues and Limitations

These issues are in addition to the known issues and limitations listed in the Analyst 1.6 Software Release Notes.

### Users should deactivate the hardware profile before turning the SelexION controller module on or off

If users want to turn the SelexION controller module on or off (to temporarily add or remove the SelexION technology to or from the system), first deactivate the currently active hardware profile in the Analyst software. Failure to do so may result in the mass spectrometer entering an unstable state resulting in a loss of control from the Analyst software. If the user does not deactivate the profile and the mass spectrometer enters this unstable state, control may be recovered by removing and re-seating the ion source, or by power cycling both the mass spectrometer and the controller module and then reactivating the hardware profile. (ST 34011)

### Using multiple DT values in a single acquisition method

When creating acquisition methods in which DT (DMS Temperature) is specified, users should refrain from using different DT values between experiments and periods. While the DMS technology is able to change DT during acquisition of a single sample, the system (mass spectrometer and DMS technology) requires approximately 10 minutes to equilibrate before collecting consistent data. Therefore, changing DT during a scan may lead to incorrect or inconsistent data. (ST 33961)

### Changing DT value in Manual Tuning

While in the Manual Tuning mode, if the user changes DT between scans, they should allow approximately 10 minutes for the system (mass spectrometer and DMS technology) to equilibrate before collecting consistent data.

### Applying all DMS parameters to all experiments in Method Editor

When creating an acquisition method, if users want to apply their currently set DMS parameters to all experiments of the same polarity, they do so by clicking Edit Parameters and then selecting the options to apply the Source/Gas and Compound parameters to all other experiments of the same polarity. Alternately, to apply only a subset, they can select either the Source/Gas or the Compound option as listed in [Table 1-1](#). (ST 33411)

**Table 1-1 DMS parameters and their respective groups**

Parameter name	Group
Separation Voltage (SV)	Compound
Compensation Voltage (COV)	Compound
DMS Offset (DMO)	Compound
DMS Resolution Enhancement (DR)	Source/Gas

**Table 1-1 DMS parameters and their respective groups**

<b>Parameter name</b>	<b>Group</b>
DMS Temperature (DT)	Source/Gas
Modifier (MD)	Source/Gas
Modifier Composition (MDC)	Source/Gas
Modifier Density (MDD)	Source/Gas
Modifier MW (MDW)	Source/Gas

### **Ramping COV in Method Editor**

When creating an acquisition method with the Ramp COV option enabled, users will see that the COV value is still editable in the Parameter Table. Editing this field will not affect the COV Ramp. However, the value in this field will be displayed in the File Info. (ST 33573)

### **Ramping DMS parameters in Manual Tuning**

When using the Ramp Parameter option in Manual Tuning and choosing to ramp a DMS parameter (COV, DMO, or SV), users will see that the selected parameter is still editable under the DMS Tab. Editing the value in the tab will not affect the selected ramp. This behavior is consistent with other rampable Compound parameters. (ST 33573)

### **Indexes shown in Compound Optimization (FIA) may be incorrect**

When running FIA Compound Optimization, on the Source Parameters window, users may see that the indexes shown for Parameters do not progress linearly. This is because the DMS parameters that cannot be optimized in the FIA workflow are hidden from view and the list is not indexed again. (ST 33950)

### **Inaccurate error message if DMS controller box changes state during acquisition**

If the DMS controller box is turned on or off during acquisition to a state that does not match the method being acquired, the acquiring sample is aborted with the reason given as “stopped by user.” (ST 35133)

### **Peak Hopping scans should not be used with the 6500 Series Instruments**

The Analyst 1.6 Software Components for 6500 Series Instruments has not been optimized for peak hopping scans with the 6500 series instruments. As a result, users should not use this scan type with the 6500 Series Instruments. (ST 35863)

### **Convert Methods script incorrectly truncates masses to 1250Da for LIT scans**

When using the Convert Methods script to convert a method with a mass range above 1000 Da (for example, a High Mass QTRAP 6500 method) for the QTRAP 6500 instrument when operating in Low Mass mode, the script will incorrectly truncate the mass range to 1250 Da. However, the Save button will be unavailable, so methods cannot be incorrectly saved. (ST 36069)



### **Compound Optimization allows gradient methods to be used with Shimadzu LC devices**

When running Compound Optimization, the software cannot detect if a Shimadzu LC method is isocratic. As Compound Optimization is only possible with isocratic methods, users should make sure that the starter method uses an isocratic flow when a Shimadzu LC stack is used. (ST 36322)

### **When running Instrument Optimization, the final graph will not be displayed**

When running Instrument Optimization, the on-screen graphs will show the results of the scan that has just completed. However, after the final scan completes, the Optimization Report will be shown, skipping the final graph. If Instrument Optimization is then executed immediately again, the missed graph will be shown on-screen during the first scan. This is a graphical issue only, and optimization is not affected by this behavior. (ST 36328)

### **Guidance on using Reporter 3.2 with Library Search templates**

If you are planning to use the Library Search templates in the Reporter 3.2 software to generate reports, contact Technical Support using [support@absciex.com](mailto:support@absciex.com). An action may be required on the Dell OptiPlex 990 computers to enable these reports. (TT 36350)

### **Shimadzu autosampler state shows as green when a vial is missing**

If a missing vial is detected during acquisition, the Analyst software will continue to display the green Ready state for the Shimadzu stack, instead of showing red. However, the detailed status for the stack does show that the autosampler has encountered a missing vial, and the event log records the same warning. (TT 36339)

### **Compound optimization report cannot be saved properly in .pdf format**

Users should refrain from saving Compound Optimization reports in .pdf format. Selecting this option will produce blank reports. (TT 36232)

### **Syringe pump button name in Manual Tune updates slower than usual**

In Manual Tune, when the Start Syringe Pump button is clicked, occasionally the button name does not update to "Stop Syringe Pump" in real time. This may cause the user to click the button again, not realizing that the syringe pump has already started running. (TT 35711)

### **Graph Information Window is grayed out after more than one peak is highlighted**

When the data being acquired in Manual Tune is viewed using the View > Graph Information Window menu item and the user resizes the Graph Information window, then this window becomes non-active and cannot be enabled. (TT 36158)

### **EPI method with CES enabled acquires longer than the set duration time**

When an EPI method with enabled Collision Energy Spread (CES) and set method duration is used to acquire data in manual tune, the data is acquired longer than the set duration time. (TT 36079)

## Common Questions

To obtain answers to questions about any of our products, to report problems, or to suggest improvements, please visit <http://www.absciex.com>. For on-site service, support, and training, contact the local AB SCIEX sales representative or FSE.

### **Does the installer replace existing files?**

Yes. The Analyst 1.6 Software Components for 6500 Series Instruments replaces files described in [Chapter 3](#).

### **Has the Analyst 1.6 Software Components for 6500 Series Instruments undergone any testing?**

Yes. The Analyst 1.6 Software Components for 6500 Series Instruments has undergone formal testing through our Software Verification group and meets the requirements for release.

### **How can I tell if the Analyst 1.6 Software Components for 6500 Series Instruments has already been installed?**

Open the Add or Remove Programs utility in the Windows XP Control Panel or the Programs and Features utility in the Windows 7 Control Panel. If Analyst 1.6 Software Components for 6500 Series Instruments is displayed in the list of currently installed programs, then it indicates that the Component for 6500 Series Instruments has already been installed.

### **Can the Analyst 1.6 Software Components for 6500 Series Instruments be removed?**

Yes. The Analyst 1.6 Software Components for 6500 Series Instruments can be removed. Files from the Analyst Data folder are not removed from the system. Removing the Analyst 1.6 Software Components for 6500 Series Instruments will return the computer to its previous Analyst 1.6 software installation. However, the 6500 series of instruments cannot be used, and data cannot be processed without the Analyst 1.6 Software Components for 6500 Series Instruments.

The Analyst<sup>®</sup> software supports the peripheral devices listed in the following tables. These peripheral devices are in addition to the peripheral devices listed in the Analyst 1.6 Software Installation Guide. Firmware versions that have been fully qualified with the Analyst 1.6 Software with Components for 6500 Series Instruments are also listed in the following tables.

In most cases, more recent firmware versions from the device manufacturer will work with the Analyst 1.6 Software with Components for 6500 Series Instruments. If the recent firmware versions do not work, change the device firmware to the version listed in this table. For information on checking and upgrading firmware, refer to the documentation provided by the peripheral device manufacturer. For information on installation and configuration of peripheral devices, refer to the *Peripheral Devices Setup Guide*.

## Recommended Firmware Versions for Peripheral Devices

Table 2-1 Eksigent

Peripheral device	Tested firmware (and other firmware)	Communication cable required
ekspert™ ultraLC 100 Autosampler	1.29 or higher	WC024736 (RS-232 cable)
ekspert ultraLC 100-XL Autosampler	1.02 or higher	WC024736 (RS-232 cable)
ekspert ultraLC 100 Pump	1.2 or higher	—
ekspert ultraLC 100 Column Oven	2.04 or higher	—

Table 2-2 Shimadzu

Peripheral device	Tested firmware (and other firmware)	Communication cable required
SIL-30AC Autosampler	2.01	—
SIL-30ACMP Autosampler	1.03	—
LC-20AD Pump	1.21	—
CTO-30AS Column Oven	0.07	—



The Analyst® 1.6 Software Components for 6500 Series Instruments installer adds some new files and updates some existing files on the system.



---

**Note:** If any of the files to be replaced are in use, then the installer will show a message indicating which files are locked and ask the user to stop the services manually. Setup will then exit.

---

## Instrument Files

The following **new** files have been added. (**new**, will be deleted after the component is removed)

Analyst Data\Projects\API Instrument\Instrument Data

- InstrumentDataQTrap6500HM.ins
- InstrumentDataQTrap6500LM.ins
- InstrumentDataTripleQuad6500HM.ins
- InstrumentDataTripleQuad6500LM.ins

Analyst Data\Projects\API Instrument\Parameter Settings

- ParamSettingsQTrap6500HM.psf
- ParamSettingsQTrap6500LM.psf
- ParamsettingsTripleQuad6500HM.psf
- ParamsettingsTripleQuad6500LM.psf

The following file has been *updated*:

Analyst Data\Projects\API Instrument\Preferences

- TuneData.tun (*updated*)

## Application Files

- Program Files\Analyst folder: (*updated* .dll, .exe, or .ocx files)
  - .dll, .ocx, .exes files in Program Files\Analyst\Bin (refer to [Chapter 4](#))

## Firmware Files

The following **new** files have been added. (**new**, will be deleted after the component is removed)

- Program Files\Analyst\Simulation
  - FWQTrap5500R03.sim

- FWQTrap6500R00.sim
- FWQTrap6500R00\_HM.sim
- FWQTrap6500R00\_LM.sim
- FWTripleQuad5500R03.sim
- FWTripleQuad6500R00.sim
- FWTripleQuad6500R00\_HM.sim
- FWTripleQuad6500R00\_LM.sim
- Program Files\Analyst\Firmware
  - FWQTrap5500R03.fw
  - FWQTrap6500R00.fw
  - FWTripleQuad5500R03.fw
  - FWTripleQuad6500R00.fw
  - PIL1301

## Method Tables

The following **new** files have been added. (**new**, will be deleted after the component is removed)

Analyst Data\Projects\API Instrument\Method Tables

- NegEMCMethTblQTrap6500HM.mtb
- NegEMCMethTblQTrap6500LM.mtb
- NegEMSMethTblQTrap6500HM.mtb
- NegEMSMethTblQTrap6500LM.mtb
- NegEPIMethTblQTrap6500HM.mtb
- NegEPIMethTblQTrap6500LM.mtb
- NegHiResMethTblQTrap6500HM.mtb
- NegHiResMethTblQTrap6500LM.mtb
- NegHiResTuneMethTblQTrap6500HM.mtb
- NegHiResTuneMethTblQTrap6500LM.mtb
- NegMS3MethTblQTrap6500HM.mtb
- NegMS3MethTblQTrap6500LM.mtb
- PosEMCMethTblQTrap6500HM.mtb
- PosEMCMethTblQTrap6500LM.mtb
- PosEMSMethTblQTrap6500HM.mtb
- PosEMSMethTblQTrap6500LM.mtb
- PosEPIMethTblQTrap6500HM.mtb
- PosEPIMethTblQTrap6500LM.mtb

- PosHiResMethTblQTrap6500HM.mtb
- PosHiResMethTblQTrap6500LM.mtb
- PosHiResTuneMethTblQTrap6500HM.mtb
- PosHiResTuneMethTblQTrap6500LM.mtb
- PosMS3MethTblQTrap6500HM.mtb
- PosMS3MethTblQTrap6500LM.mtb

The following files are removed from the Analyst 1.6 software when the Components for 6500 Series Instruments is installed. However, they are reinstated when the Components for 6500 Series Instruments is removed and the software reverts back to the Analyst 1.6 software level.

- NegTDFMethTblQTrap5500.mtb
- PosTDFMethTblQTrap5500.mtb

Analyst Data\Projects\API Instrument\Method Tables\DFTMethodTables (all files are **new**)

- NegEMSDFTMethTblQTrap6500HM.mtb
- NegEMSDFTMethTblQTrap6500LM.mtb
- NegEPIDFTMethTblQTrap6500HM.mtb
- NegEPIDFTMethTblQTrap6500LM.mtb
- NegHiResDFTMethTblQTrap6500HM.mtb
- NegHiResDFTMethTblQTrap6500LM.mtb
- NegMS3DFTMethTblQTrap6500HM.mtb
- NegMS3DFTMethTblQTrap6500LM.mtb
- PosEMSDFTMethTblQTrap6500HM.mtb
- PosEMSDFTMethTblQTrap6500LM.mtb
- PosEPIDFTMethTblQTrap6500HM.mtb
- PosEPIDFTMethTblQTrap6500LM.mtb
- PosHiResDFTMethTblQTrap6500HM.mtb
- PosHiResDFTMethTblQTrap6500LM.mtb
- PosMS3DFTMethTblQTrap6500HM.mtb
- PosMS3DFTMethTblQTrap6500LM.mtb

## Methods

The following **new** files have been added. (**new**, will be deleted after the component is removed)

Analyst Data\Projects\API Instrument\Instrument Optimization\methods

- auto65QHMEXC.dam
- auto65QHMIISO.dam
- auto65QHMLITCAL.dam

- auto65QHMLITCALfine.dam
- auto65QHMLITramp.dam
- auto65QHMQualCAL.dam
- auto65QHMRRES.dam
- auto65QLMEXC.dam
- auto65QLMISO.dam
- auto65QLMLITCAL.dam
- auto65QLMLITCALfine.dam
- auto65QLMLITramp.dam
- auto65QLMQualCAL.dam
- auto65QLMRRES.dam
- autoAPI65HMQualCAL.dam
- autoAPI65LMQualCAL.dam

## Settings

The following **new** files have been added. (**new**, will be deleted after the component is removed)

Projects\API Instrument\Instrument Optimization\settings

- 65QHM.NEG.100 x dilute Agilent.csv
- 65QHM.NEG.PPG3000.csv
- 65QHM.NEG.PPG.csv
- 65QHM.POS.100 x dilute Agilent.csv
- 65QHM.POS.PPG3000.csv
- 65QHM.POS.PPG.csv
- 65QLM.NEG.100 x dilute Agilent.csv
- 65QLM.NEG.PPG3000.csv
- 65QLM.NEG.PPG.csv
- 65QLM.POS.100 x dilute Agilent.csv
- 65QLM.POS.PPG3000.csv
- 65QLM.POS.PPG.csv
- API65HM.NEG.PPG3000.csv
- API65HM.NEG.PPG.csv
- API65HM.POS.PPG3000.csv
- API65HM.POS.PPG.csv
- API65LM.NEG.PPG3000.csv
- API65LM.NEG.PPG.csv



- API65LM.POS.PPG3000.csv
- API65LM.POS.PPG.csv

## Scripts

Program Files\Analyst\Scripts\Convert Methods (*updated*)

- Convert Methods Setup.exe

Analyst Data\Projects\API Instrument\Processing Scripts\Purge folder (**new**)

- AnalystService.dll
- COMMONTLB.dll
- Interop.AAO.dll
- Interop.AAOBatch.dll
- Interop.AcqMethodDir.dll
- Interop.AcqMethodSvr.dll
- Interop.Analyst.dll
- Interop.HWConfigurationMgr.dll
- Interop.MSMethodSvr.dll
- Interop.ParamAccessData.dll
- Interop.ParameterSvr.dll
- Interop.ParamSettings.dll
- Interop.ParamSettingsSvr.dll
- Interop.SampleStatusServer.dll
- Interop.StatusSvr.dll
- PurgeModifier.exe
- QueueDispatcherLib.dll
- ROTMANLib.dll

Analyst Data\Projects\API Instrument\Processing Scripts

- OptMS3.exe (*updated*)
- MRM3 Optimization.dll

## Documentation Files

Program Files\Analyst\Help

- Release Notes - Components for 6500 Series Instruments.pdf (**new**)
- Analyst Help.chm (*updated*)

## File Summary

---

### Program Files\Analyst\Help\Qualified Maintenance Guides

- 6500-series-qualified-maintenance-guide-eng.pdf (**new**)

### Program Files\Analyst\Help\Site Planning Guides

- 6500-series-site-planning-guide-eng.pdf (**new**)

### Program Files\Analyst\Help\Ion Source Guides

- turbov-iondrive-source-operator-guide-eng.pdf (**new**)
- PhotoSpray®\_Ion\_Source\_Operator's\_Guide.pdf (*updated*)
- DuoSpray™\_Ion\_Source\_Operator's\_Guide.pdf (*updated*)
- Turbo\_V™\_Ion\_Source\_Operator's\_Guide.pdf (*updated*)
- NanoSpray®\_Ion\_Source\_Operator's\_Guide.pdf (*updated*)
- Ion\_Source\_Specifications.pdf (*updated*)

### Program Files\Analyst\Help\Software Guides

- SelexION Technology User Guide.pdf (**new**)
- 6500 Series of Instruments System User Guide.pdf (**new**)
- Advanced User Guide.pdf (**new**)
- AN\_PD\_D1000010687\_EN.pdf (*updated*)
- ANS\_UG\_D1000064801\_EN.pdf (*updated*)

### Program Files\Analyst\Help\Tutorials

- AN\_TUT\_D1000066785\_EN.pdf (*updated*)
- AN\_TUT\_D1000076694\_EN.pdf (*updated*)
- AN\_TUT\_D1000076695\_EN.pdf (*updated*)
- AN\_TUT\_D1000076696\_EN.pdf (*updated*)
- AN\_TUT\_D1000076697\_EN.pdf (*updated*)
- AN\_TUT\_D1000080943\_EN.pdf (*updated*)
- AN\_TUT\_D1000090120\_EN.pdf (*updated*)

Table 4-1 lists the files that are updated in the Analyst\bin folder.

Only in-house developed .dll, .exe, and .ocx files are updated. The third party files remain unchanged, as they are not recompiled regularly.

**Table 4-1 Updated Files**

• AACAuditTrail.dll	• Altova.dll
• AAO.dll	• Altovaxml.dll
• AAOBatch.dll	• Analyst.exe
• AAOBatchps.dll	• Analyst.reg
• AAOps.dll	• AnalystLauncher.exe
• AAORemote.exe	• AnalystScriptDir.dll
• AAORemoteps.dll	• AnalystService.dll
• AAOService.dll	• AnalystService.exe
• AAOServiceps.dll	• AnalystServiceps.dll
• AccessScanMetaDataObject.dll	• ArithmeticScanEngine.dll
• AcqMethodBrowser.ocx	• ArithmeticWizard.dll
• AcqMethodContainer.ocx	• ASViewerCTCPAL.dll
• AcqMethodDir.dll	• AuditTrailCommon.dll
• AcqMethodDirps.dll	• AuditTrailManagerCtrl.ocx
• AcqMethodEditor.ocx	• AuditTrailManagerDir.dll
• AcqMethodSvr.dll	• AuditTrailServer.dll
• AcqMethodSvrps.dll	• AutomatonDataObjects.dll
• AcqMethodTimedEvents.dll	• AutomatonDataObjectsps.dll
• ADCMethodEditor.ocx	• AutomatonSvr.dll
• ADCMethodSvr.dll	• AutomatonSvrps.dll
• ADCMethodSvrps.dll	• AutomatonUtils.dll
• AdminConsole.dll	• AutosamplerAddIn.exe
• Administrator Console.msc	• AutosamplerDatabase.dll
• Agilent1100DTMethodEditor.dll	• AutosamplerDB.adb
• Agilent1100DTMethodSvr.dll	• AutosamplerDBServer.adb
• AgilentFileTransEngine.dll	• AutoSamplerMethodSvr.dll
• AgilentTranslator.dll	• AutoSamplerMethodSvrps.dll
• AgtMSMethodEditor.ocx	• AutosamplerSelect.dll
• AgtMSMethodSvr.dll	• AutosamplerUISelect.ocx
• AgtMSMethodSvrps.dll	• AutosamplerViewer.ocx
• BatchDir.dll	• AutoTune- Instrument Tuning.exe

Table 4-1 Updated Files (Continued)

• BatchDirps.dll	• BatchImportExportps.dll
• BatchEditor.ocx	• BatchSvr.dll
• BatchExpress.dll	• BatchSvrps.dll
• BatchImportExport.dll	• CalibrationTable.dll
• CalibrationTableps.dll	• CSCOHP1100co.dll
• ColumnOvenMethodSvr.dll	• CSCOHP1100cops.dll
• ColumnOvenMethodSvrps.dll	• CSCOPE200co.dll
• ComponentManager.dll	• CSCOPE200cops.dll
• ComponentManagerps.dll	• CSDTAgilent1100.dll
• CompoundDBDetails.ocx	• CSISLCPUltimate.dll
• CompoundDBEditor.ocx	• CSISLCPUltimateps.dll
• CompoundDBObject.dll	• CSISShimadzu.dll
• CompoundLibEngine.dll	• CSMSMassSpec.dll
• CompoundLibUI.dll	• CSMSMassSpecps.dll
• CreateMRMTransitions.dll	• CSPUHarvard.dll
• CSADConverter.dll	• CSPUHarvardps.dll
• CSADConverterps.dll	• CSPUHP1100pump.dll
• CSASCTCPALv2.dll	• CSPUHP1100pumpps.dll
• CSASCTCPALv2ps.dll	• CSPUPE200lc.dll
• CSASGilson215.dll	• CSPUPE200lcps.dll
• CSASGilson215ps.dll	• CSVAValco.dll
• CSASGilson233.dll	• CSVAValcops.dll
• CSASGilson233ps.dll	• CS__Genericps.dll
• CSASHP1100as.dll	• CS__VendorApp.dll
• CSASHP1100asps.dll	• CS__VendorAppps.dll
• CSASLCPFamos.dll	• CTCPALUIWrapper.dll
• CSASLCPFamosps.dll	• CTCPALV2asMethodEditor.ocx
• CSASPE200as.dll	• CTCPALV2asMethodSvr.dll
• CSASPE200asps.dll	• CTCPALV2asMethodSvrps.dll
• CSASSEndurance.dll	• CustomLogger.dll
• CSASSEnduranceps.dll	• DAMPrefs.dll
• DataGrid.ocx	• DDDTAgilent1100.dll
• DataList.ocx	• DDDTAgilent1100ps.dll
• DataMan.dll	• DDEMethodSvr.dll
• DataManps.dll	• DDISLCPUltimate.dll
• DBManager.dll	• DDISLCPUltimateps.dll
• DDADConverter.dll	• DDISShimadzu.dll

**Table 4-1 Updated Files (Continued)**

• DDADConverterps.dll	• DDISShimadzups.dll
• DDASCTCPALv2.dll	• DDMaldi.dll
• DDASCTCPALv2ps.dll	• DDMaldips.dll
• DDASGilson215.dll	• DDMSMassSpec.dll
• DDASGilson215ps.dll	• DDMSMassSpecps.dll
• DDASGilson233.dll	• DDPUHarvard.dll
• DDASGilson233ps.dll	• DDPUHarvardps.dll
• DDASHP1100as.dll	• DDPUHP1100pump.dll
• DDASHP1100asps.dll	• DDPUHP1100pumpsps.dll
• DDASLCPFamos.dll	• DDPUPE200lc.dll
• DDASLCPFamosps.dll	• DDPUPE200lcps.dll
• DDASPE200as.dll	• DDVAValco.dll
• DDASPE200asps.dll	• DDVAValcops.dll
• DDASSHEndurance.dll	• DD__Genericps.dll
• DDASSHEnduranceps.dll	• DD__VendorApp.dll
• DDCOHP1100co.dll	• DD__VendorAppps.dll
• DDCOHP1100cops.dll	• DeviceMethodps.dll
• DDCOPE200co.dll	• DFTTracker.exe
• DDCOPE200cops.dll	• DisplayMeter.dll
• EditControl.ocx	• ExploreDataObjects.dll
• ElementalCompositionCalculator.ocx	• ExploreDataObjectspssps.dll
• ElementalTargetCalculator.ocx	• ExploreDir.dll
• EnduranceASMethodEditor.ocx	• ExploreDirps.dll
• EnduranceASMethodSvr.dll	• ExploreHistory.dll
• EnduranceASMethodSvrps.dll	• ExplorePrefs.dll
• EngineUtilities.dll	• ExploreVBUtils.dll
• EventLogger.dll	• ExpressViewPlate.ocx
• FamosAsMethodEditor.dll	• FileManager.dll
• FamosAsMethodServer.dll	• FileManagerps.dll
• FFTDataProcessor.dll	• FMStructStg.dll
• FIAOptimizer.dll	• FMWIFFCompDocNTDriver.dll
• FileBundler.exe	• FragmentPredication.ocx
• GaussianPeakFinder.dll	• GilsonXYZ.dll
• Gilson215asMethodEditor.ocx	• GraphControl.ocx
• Gilson233asMethodEditor.ocx	• GraphStatusControl.ocx
• HCE.dll	• HP1100lcMethodEditor.ocx
• HP1100asMethodEditor.ocx	• HWConfigurationMgr.dll

**Table 4-1 Updated Files (Continued)**

• HP1100asMethodSvr.dll	• HWProfileSvr.dll
• HP1100asMethodSvrps.dll	• HypermassCalculator.ocx
• HP1100coMethodEditor.ocx	• IDAExplorer.dll
• IDAMethodSvr.dll	• InitSDBLog.dat
• IDAMethodSvrps.dll	• InstrumentAuditTrail.dll
• IDASetupWizard.dll	• InstrumentData.dll
• ID__ethernet.dll	• InstrumentDataps.dll
• ID__gpib.dll	• IonEnhanceSetup.exe
• ID__sc.dll	• isadmin.dll
• ID__serial.dll	• IsotopicDistributionCalculator.ocx
• LCPumpMethodSvr.dll	• LibUI.dll
• LCPumpMethodSvrps.dll	• LibUtils.dll
• LibSearchEngine.dll	• LIMSCommunication.dll
• MassCalibReport.ocx	• MMSecurityps.dll
• MassPropertyCalculator.ocx	• msmethodeditor.ocx
• messages.dll	• MSMMethodSvr.dll
• MMSecurity.dll	• MSMMethodSvrps.dll
• NetCDFTranslator.dll	• NetWorkSync.exe
• PaneManager.ocx	• PD__sc.dll
• ParamAccessData.dll	• PD__SCAP.dll
• ParamAccessDataps.dll	• PD__scapSimulate.dll
• ParamAccessList.dll	• PD__scSimulate.dll
• ParamAccessListps.dll	• PD__tfss03.dll
• ParameterSvr.dll	• PD__ValcoValveSim.dll
• ParameterSvrps.dll	• PE200asMethodEditor.ocx
• ParamSettings.dll	• PE200coMethodEditor.ocx
• ParamSettingsEditor.dll	• PE200lcMethodEditor.ocx
• ParamSettingsEditorps.dll	• PeakDetectionModule.dll
• ParamSettingsps.dll	• PeakDetectionModuleps.dll
• ParamSettingsSvr.dll	• PeakFinderFactory.dll
• ParamSettingsSvrps.dll	• PeakListModule.dll
• PD__ADConverterSim.dll	• PeakProcessors.dll
• PD__ASCII.dll	• PeakProcessorsps.dll
• PD__ASGilson215Sim.dll	• Peak_Finder4.dll
• PD__ASGilson233Sim.dll	• Peak_Finder4ps.dll
• PD__ASHP1100Sim.dll	• Peak_Finder5.dll
• PD__ASPE200Sim.dll	• PEIUtils.dll

Table 4-1 Updated Files (Continued)

• PD__COHP1100Sim.dll	• PersistWiffStgps.dll
• PD__COPE200Sim.dll	• PingLib.dll
• PD__DTAgilent1100Sim.dll	• ProjectAuditTrail.dll
• PD__GSIOC.dll	• ProjectFront.dll
• PD__HVSyringePumpSim.dll	• ProjectManager.dll
• PD__licop.dll	• ProjectManagerps.dll
• PD__PUHP1100Sim.dll	• ProtocolDir.dll
• PD__PUPE200Sim.dll	• ProtocolGeneratorCore.ocx
• QuanMethodProjectps.dll	• QuantPoet.dll
• QuantAuditTrail.dll	• QuantRT.ocx
• QuantAuditViewer.ocx	• QuantSettings.dll
• QuantCalibration.ocx	• QuantStatistics.ocx
• QuantDir.dll	• QuantWizard.dll
• QuantFullMethodEditor.ocx	• QueueDir.dll
• QuantIntegration.dll	• QueueDispatcher.dll
• QuantitationAuditTrail.dll	• QueueDispatcherps.dll
• QuantMethod.dll	• QueueManager.ocx
• QuantOptimizeWizard.dll	• QueueSvr.dll
• QuantOptimizeWizardps.dll	• QueueSvrps.dll
• QuantPeakReview.ocx	• ReportEngine.ocx
• RackBuilder.exe	• ReportEngineManager.dll
• RackViewer.ocx	• ReportEngineManagerps.dll
• RackViewerTP.ocx	• ReportTemplateEditor.ocx
• regmessages.exe	• ResolutionTable.dll
• RegTune.exe	• ResolutionTableps.dll
• ReportDir.dll	• ROTMan.dll
• ReportDirps.dll	• ROTManps.dll
• SampleStatusServer.dll	• showStat.dll
• ScanMetaDataObject.dll	• StateTable.ocx
• SciexAnalystBatch.dll	• StationStatus.dll
• SciexAnalystDetailedStatus.dll	• StatusDir.dll
• SciexAnalystDeviceStatus.dll	• StatusDirps.dll
• SciexAnalystMethod.dll	• StatusSvr.dll
• SCL10AvpMethodEditor.ocx	• StatusWindow.ocx
• ScriptUtilities.dll	• SubWiffFile.dll
• SecurityConfig.dll	• SyncMan.dll
• SecurityConfigDir.dll	• SyncManps.dll

**Table 4-1 Updated Files (Continued)**

• SecurityGroupsDBManager.dll	• SyringePumpMethodEditor.ocx
• ShimadzuMethodEditor.ocx	• SyringePumpMethodSvr.dll
• ShimUIWrapper.dll	• SyringePumpMethodSvrps.dll
• ShowMessageUtil.exe	• TuneData.dll
• TabbedContainer.dll	• TuneDataps.dll
• Translat.exe	• TuneDir.dll
• TransLib.dll	• TuneDirps.dll
• TransNetCDF.dll	• TuneMethodEditor.ocx
• UltimatePumpMethodEditor.dll	• UserManager.dll
• UltimatePumpMethodEditorps.dll	• UserManagerps.dll
• UnitConverter.ocx	• VD__SimFamos.exe
• ValcoValveMethodEditor.ocx	• VD__SimUltimate.exe
• ValcoValveMethodSvr.dll	• VendorAppMethodEditor.ocx
• ValcoValveMethodSvrps.dll	• VendorAppMethodSvr.dll
• VASCTCPAL.exe	• VendorAppMethodSvrps.dll
• VASCTCPALps.dll	• VendorDriverps.dll
• VDISShimadzu.exe	• VialLayoutViewer.ocx
• VDISShimadzups.dll	• VSISShimadzu.dll
• VD__SimEndurance.exe	• WiffBrowse.dll
• WallyConnectBatch.dll	• WIFFTransSvr.dll
• WallyConnectResults.dll	• WIFFTransSvrps.dll