

Software Installation Guide



Analyst® 1.5.2 Software with Hotfixes to February 2011

Part Number: 5013090 A

February 2011

AB SCIEX

This document is provided to customers who have purchased AB SCIEX equipment to use in the operation of such AB SCIEX equipment. This document is copyright protected and any reproduction of this document or any part of this document is strictly prohibited, except as AB SCIEX may authorize in writing.

Software that may be described in this document is furnished under a license agreement. It is against the law to copy, modify, or distribute the software on any medium, except as specifically allowed in the license agreement. Furthermore, the license agreement may prohibit the software from being disassembled, reverse engineered, or decompiled for any purpose.

Portions of this document may make reference to other manufacturers and/or their products, which may contain parts whose names are registered as trademarks and/or function as trademarks of their respective owners. Any such usage is intended only to designate those manufacturers' products as supplied by AB SCIEX for incorporation into its equipment and does not imply any right and/or license to use or permit others to use such manufacturers' and/or their product names as trademarks.

AB SCIEX makes no warranties or representations as to the fitness of this equipment for any particular purpose and assumes no responsibility or contingent liability, including indirect or consequential damages, for any use to which the purchaser may put the equipment described herein, or for any adverse circumstances arising therefrom.

For research use only. Not for use in diagnostic procedures.



The trademarks mentioned herein are the property of AB Sciex Pte. Ltd. or their respective owners. AB SCIEX™ is being used under license.

AB SCIEX

71 Four Valley Dr., Concord, Ontario, Canada. L4K 4V8.

AB SCIEX LP is ISO 9001 registered.

© 2011 AB SCIEX.

Printed in Canada.

Introduction	5
Important Information to Know Before Installing	5
Support	7
Software Installation Requirements	9
Operating System Requirements	9
Network Environment Requirements	9
Acquisition Workstation Requirements	9
Processing Workstation Requirements	9
Supported Acquisition Computer Models	10
Current Shipping Configuration for the Dell Optiplex 960 for Acquisition Workstations	10
Supported Interface Cards and Driver Versions	11
Removing the Reporter 2.0 Software	11
PDF Reporting Requirements	11
Compatibility with Other Software	11
Supported Mass Spectrometers	13
Key Content of the Analyst® 1.5.2 Software with Hotfixes to February 2011 DVD.	13
Installation Instructions	15
How to Use These Installation Instructions for Acquisition Workstations Versus Processing Workstations	15
Task List for Installing	17
Preparing to Install	18
Installing the Analyst® 1.5.2 Software with Hotfixes to February 2011	19
Analyst® Software User Registration.	22
Network Installation.	25
Important Information to Know Before Installing	25
Analyst® 1.5.2 Software with Hotfixes to February 2011 Installation Over the Network.	25
Installing Microsoft .NET Framework 3.5 SP 1	25
Installing Microsoft Visual C++ 2008 Runtime SP 1 Redistributable	26
Installing SaveAsPDF.	27
Installing the Analyst® 1.5.2 Software with Hotfixes to February 2011 Over the Network	27

Troubleshooting Installation	31
Firmware and Configuration Tables Files	33
Peripheral Devices and Firmware	35
Notes on Firmware for Agilent Users	47
Peripheral Devices Controlled via AAO Software Interface	47
Configuring the Intel Dual Port Card	49
Upgrading the ADC Card Driver	53
Upgrading the Driver Software for the ADC Card.	53
Upgrading the GPIB Card Driver	59
Upgrading the Driver Software for the GPIB Card	59
Analyst® Software Documentation	61

This guide provides information about, and procedures for, installing the Analyst® 1.5.2 Software with Hotfixes to February 2011. This guide also includes information on supported peripheral devices and firmware and troubleshooting installation.

For information about new software features, enhancements, and known issues, see the release notes for the Analyst 1.5.2 Software with Hotfixes to February 2011 included with the Analyst 1.5.2 Software with Hotfixes to February 2011 package.

Important Information to Know Before Installing

To make sure that your software installation is successful, read the following points carefully before you start any of the procedures in this guide:



Note: Make sure that you back up the Analyst Data folder to a safe location before upgrading. For more information, see [To back up the Analyst Data folder to a safe location on page 18](#). **Do not rename the existing folder.** This folder contains the API Instrument folder, which contains the basic instrument calibration and parameter settings.



Note: If you uninstall Analyst 1.5.2 Software with Hotfixes to February 2011, you will not be able to revert to the previously installed version of the Analyst software.

- Do not replace the API Instrument folder created during installation of the Analyst® 1.5.2 Software with Hotfixes to February 2011 with API Instrument folders created in previous versions of the Analyst software. You can, however, copy each individual file from this folder into the new folder.
- All versions of the Analyst software require a valid software license. These licenses are provided with new instrument purchases and can also be purchased separately from AB SCIEX. If you have any questions regarding the validity of your current license or to enquire about purchasing additional licenses, please contact your AB SCIEX sales representative or Technical Support via support@absciex.com.
- Do not attempt to install the software without following the installation instructions provided in this guide.

- The Analyst 1.5.2 Software with Hotfixes to February 2011 data files are not compatible with the Analyst software versions 1.4.2 or lower. However, you can open data acquired in previous versions of the Analyst software in the Analyst 1.5.2 Software with Hotfixes to February 2011.
- Use the task list provided at the beginning of the installation procedure in this guide to check off each task as you complete it. The order in which you carry out the installation steps is important. If you are installing to more than one workstation, make photocopies of the task list so you have a copy for each workstation.
- All peripheral devices supported in the Analyst 1.4.2 software and later continue to be supported in the Analyst 1.5.2 Software with Hotfixes to February 2011. For more information, see [Peripheral Devices and Firmware on page 35](#).
- If you are installing from the DVD, the Analyst 1.5.2 Software with Hotfixes to February 2011 can be installed without having a previous version of the Analyst software installed or it can install over the Analyst 1.5, 1.5.1, or 1.5.2 software.
- If you are installing the Analyst 1.5.2 Software with Hotfixes to February 2011 using files downloaded from the Web site, then you must have the Analyst 1.5.1 or 1.5.2 software already installed on your system.
- Deactivate the hardware profile and close the Analyst software before installing the Analyst 1.5.2 Software with Hotfixes to February 2011.
- If you are using the Analyst 1.4.2 software or earlier, uninstall the software before installing the Analyst 1.5.2 Software with Hotfixes to February 2011. If you would like to maintain your current security database, first upgrade to the Analyst 1.5 software and then upgrade to the Analyst 1.5.2 Software with Hotfixes to February 2011.
- The Analyst 1.5.2 Software with Hotfixes to February 2011 cannot be installed on the same computer as the Analyst Administrator Console (AAC) server software. If you are using the AAC server software, install it on a separate computer not running the Analyst 1.5.2 Software with Hotfixes to February 2011.
- The Analyst 1.5.2 Software with Hotfixes to February 2011 is not compatible with the AAC server version 1.0. If you are currently managing your user database centrally using the AAC server, upgrade the AAC server to version 2.0 before installing the Analyst 1.5.2 Software with Hotfixes to February 2011. To order the new version of the AAC server software, contact your AB SCIEX sales representative.
- The Analyst 1.5.2 Software with Hotfixes to February 2011 is not a replacement for the Analyst 1.4.2 Software

Components for FlashQuant™ Workstation. If you are currently using a FlashQuant workstation, do not upgrade to the Analyst 1.5.2 Software with Hotfixes to February 2011.

- For more information about the compatibility of the Analyst 1.5.2 Software with Hotfixes to February 2011 with other software applications, see [Removing the Reporter 2.0 Software on page 11](#).

Support

At AB SCIEX, we are committed to providing the highest level of support for the Analyst® software users. To obtain answers to questions about any of our products, report problems, or suggest improvements, visit the web site at www.absciex.com or write to support@absciex.com.



This section explains the operating system, hardware, and software requirements that acquisition and processing workstations must meet for the Analyst® software to operate.

Operating System Requirements

The Analyst® 1.5.2 Software with Hotfixes to February 2011 requires Microsoft Windows XP SP2 or SP3 operating system. The Analyst software does not support the Windows Vista and Windows 7 operating systems.

Network Environment Requirements

The Analyst® 1.5.2 Software with Hotfixes to February 2011 supports the Microsoft Windows Server 2003 network environment.

Acquisition Workstation Requirements

It is highly recommended that you purchase an acquisition workstation from AB SCIEX. These configured systems meet all requirements and undergo extensive testing and verification with the Analyst® software. Detailed specifications for these systems are shipped with the PC.

Order the configured systems, including the cards, through AB SCIEX. For more information, contact your AB SCIEX sales representative.

For *Scheduled* MRM™ acquisitions, the recommended computer models are the Dell Precision T3400 and the Dell Optiplex 960 (especially with acquisitions involving greater than 300 MRM transitions.)



Note: If you upgrade your acquisition workstation to the Analyst 1.5.2 Software with Hotfixes to February 2011, upgrade your processing workstation as well.

Processing Workstation Requirements

For data processing workstations, AB SCIEX recommends the minimum computer configuration of the Dell P340 computer or equivalent. Minimum specifications are a Pentium 4 - 2.53 GHz based system with 256 MB of RAM, 40 GB of internal hard disk storage, Windows XP SP2 operating system, and a minimum of Internet Explorer 6.0 SP2.

Some AB SCIEX add-on software requires additional memory, disk space, and processing speed. For more information, see the documentation included with the software.

Supported Acquisition Computer Models

As of the software release date, the Analyst® 1.5.2 Software with Hotfixes to February 2011 has been tested and verified for compatibility with the following computer models:

- Dell P390
- Dell T3400
- Dell Optiplex 960

Newer systems might be available. For more information, contact your FSE.

Current Shipping Configuration for the Dell Optiplex 960 for Acquisition Workstations

The configured system comes preinstalled with the Windows XP SP3 operating system, Internet Explorer 6.0 SP2, and all driver software for the cards.

It includes the following peripherals:

- National Instruments USB to GPIB may be required for data acquisition but is not included.
- (Optional on some instruments) EdgePort USB to serial converter
- Two pre-installed Intel Pro 1000 GT PCI cards
- (Optional) National Instruments 16-bit ADC kit, required for analog signal measurement. This option will support six single-ended (ground referenced) channels at 16 bits/channel



Note: Do not change the power management settings in the BIOS. Changing the power management settings might interfere with batch acquisition by introducing long delay times between samples.



Note: To control Agilent LC devices through the network interface, make sure that your computer has an additional Ethernet port available.

Supported Interface Cards and Driver Versions

The Analyst® 1.5.2 Software with Hotfixes to February 2011 has been tested with the following cards and driver versions.

Table 4-1 Cards and Drivers

Card Name	Driver Version
GPIB	2.5
ADC	8.3
Network Card - Intel Pro/1000 GT	Driver version 8.10.3.0 or later
EdgePort USB	4.2

Removing the Reporter 2.0 Software

If the Reporter 2.0 software is installed on the computer, it should be manually uninstalled before installing the Analyst® 1.5.2 Software with Hotfixes to February 2011. The Analyst 1.5.2 Software with Hotfixes to February 2011 replaces the reporting capabilities of the Reporter 2.0 software with the Reporter 3.0.1 software. Templates and queries created for the Reporter 2.0 software are compatible with the Reporter 3.0.1 software and will be preserved when the Reporter 2.0 software is uninstalled.

PDF Reporting Requirements

During the Analyst® 1.5.2 Software with Hotfixes to February 2011 installation, you can select the option to either allow reporting in all formats (Word, Text, Excel, HTML, PDF) or only in the PDF format. If you select the PDF only option and have MS Word 2003 installed, then you must have the FinePrint pdfFactory software (version 2.x or 3.x) installed to generate reports. The pdfFactory software is not distributed with the Analyst software.

Compatibility with Other Software

To operate additional scripts or vertical applications, such as the Cliquid® software, Reporter 3.0.1, and the Convert Methods script, the following additional software is required:

- Microsoft .NET Framework 3.5 SP 1
- Microsoft Visual C++ 2008 Runtime SP 1 Redistributable
- SaveAsPdf

These applications will be installed automatically when the Analyst® software is installed.

Compatible Software

As of this release, the following software releases are compatible with the Analyst® 1.5.2 Software with Hotfixes to February 2011:

- BioAnalyst™ 1.5 software
- ChemoView™ 2.0.2 software
- LightSight® 2.2.1 Patch for New Autosamplers (Agilent 1260 and Shimadzu Nexera)
- MarkerView™ 1.2.1 software
- MRMPilot™ 2.0 software
- MultiQuant™ 2.0.2 software
- ProteinPilot™ 4.0 software
- Smart Monitor 4.3.2 software

Non-Compatible Software

As of this release, the following software releases are *not* compatible with the Analyst® 1.5.2 Software with Hotfixes to February 2011:

- Metabolite ID software (for the API series instruments)
- Metabolite ID (for the QSTAR® series instruments)
- Pro ID software
- Pro ICAT software
- Pro QUANT software
- Pro BLAST software
- oMALDI™ Server software
- oMALDI Xpert software
- PrepExpress™ software
- FlashQuant™ software
- Automaton

To inquire about the compatibility of software not included in either of these lists, contact your AB SCIEX support or sales representative.

Supported Mass Spectrometers

The Analyst® 1.5.2 Software with Hotfixes to February 2011 can control and analyze the data from each of the following AB SCIEX mass spectrometers:



Note: Older models of mass spectrometers supported in the Analyst 1.4.2 software may be compatible with the Analyst 1.5.2 Software with Hotfixes to February 2011 but have not been specifically validated.

- AB SCIEX QTRAP® 5500 system
- AB SCIEX Triple Quad™ 5500 system
- 4000 QTRAP® system
- 3200 QTRAP® system
- QTRAP® system
- API 5000™ system
- API 4000™ system
- API 3200™ system
- API 3000™ system
- API 2000™ system

Key Content of the Analyst® 1.5.2 Software with Hotfixes to February 2011 DVD

The following software applications, files, folders, and documents are included on the Analyst® 1.5.2 Software with Hotfixes to February 2011 DVD:

- Analyst 1.5.2 Software with Hotfixes to February 2011
- Drivers folder: Contains driver software for all supported cards
- An Extras folder containing the following subfolders:
 - AAO: Contains the Analyst Access Object release notes and user guide.
 - ACROREAD: Contains the Adobe Acrobat Reader 9.
 - Agilent BOOTP Package: Contains instructions and a utility to allow control of the Agilent LC devices using Ethernet (in most cases an additional Ethernet adapter is required).
 - Examples: Contains sample methods, data, and results files.
 - Instrument Update: Contains the Firmware/Configuration Table Update Program (ConfigUpdater.exe).

- Peak Finder: Contains a registry file for setting the peak finder version used on older data files.
- Scripting Cookbook: Contains a guide that provides information for writing applications to control the Analyst software
- *The Analyst 1.5.2 Software with Hotfixes to February 2011 Release Notes*
- *The Analyst 1.5.2 Software with Hotfixes to February 2011 Installation Guide* (this document)
- An Install folder containing safety guides as well as hardware and software guides and tutorials for all instruments



Note: For a complete list of documents and their location, see [Analyst® Software Documentation on page 61](#).

This section provides procedures for installing or upgrading to the Analyst® 1.5.2 Software with Hotfixes to February 2011.



Note: The order of the upgrade procedures is important. Use the [Task List for Installing on page 17](#) to make sure that you complete each procedure.

If you are installing from the Analyst 1.5.2 Software with Hotfixes to February 2011 DVD and you have the Analyst 1.4.2 software or an earlier version installed, then before installing the Analyst 1.5.2 Software with Hotfixes to February 2011 you must either manually uninstall your current version or upgrade to the Analyst 1.5 or 1.5.1 software.

If you are installing from the website download, then you must have the Analyst 1.5.1 or 1.5.2 software installed, or you must upgrade to one of these versions before installing the Analyst 1.5.2 Software with Hotfixes to February 2011.



Note: Your security database will be removed when the Analyst software is uninstalled. If you would like to maintain your current security database, then you must upgrade to the Analyst 1.5.2 Software with Hotfixes to February 2011 using one of the above mentioned methods.




Note: Removing the Analyst 1.5.2 Software with Hotfixes to February 2011 from the system will uninstall the Analyst software completely rather than reverting to the previously installed configuration. The Analyst Data folder will not be removed, but it is still recommended that you archive this folder. Instrument settings are retained but application settings are not.

How to Use These Installation Instructions for Acquisition Workstations Versus Processing Workstations

The upgrade instructions in this section can be used for both acquisition workstations (workstations that are connected to an instrument) and processing workstations (workstations that are not connected to an instrument).

Use the following table to understand which upgrade procedures to complete for each scenario.

Table 5-1 Scenarios

Workstation	Procedure
For acquisition workstations:	Complete all procedures in this section (note that some procedures are optional, or are required only if you have certain interface cards installed in the workstation).
For processing workstations:	Complete only those procedures marked with the following icon:  You can skip any upgrade procedures related to: <ul style="list-style-type: none">• Cards and driver software• Upgrading firmware and configuration tables

Task List for Installing

Use the following task list to make sure that you complete all the required steps to prepare for and complete the installation. Procedures for each task are included in this guide on the pages shown in the right column.



Tip! Photocopy this checklist so you can check off each step as you proceed through the installation instructions.

Table 5-2 Checklist

		Step	Procedure
<input type="checkbox"/>	P	1. Make sure that the workstation meets the requirements for installing the Analyst® software.	Read the section starting on page 9.
<input type="checkbox"/>	P	2. Gather the required and optional DVDs, CDs, and downloads you need for the installation.	See page 18.
<input type="checkbox"/>	P	3. Prepare the instrument and workstation for the installation.	See page 18.
<input type="checkbox"/>	P	4. Back up the Analyst Data folder to a safe location.	See page 18.
<input type="checkbox"/>	P	5. Install the Analyst 1.5.2 Software with Hotfixes to February 2011.	See page 19.
<input type="checkbox"/>		6. Upgrade the driver software for the GPIB card, if required.	See page 59.
<input type="checkbox"/>		7. Update the firmware and configuration tables, if required	See page 21.
<input type="checkbox"/>	P	8. (Optional) Install any scripts.	See page 22.
<input type="checkbox"/>	P	9. Run the Analyst software for the first time.	See page 22.
<input type="checkbox"/>	P	10. Register the Analyst software online.	See page 22.

Preparing to Install

Complete the following steps before you begin installing the Analyst® 1.5.2 Software with Hotfixes to February 2011.

To gather the required and optional software installers

1. Locate the Analyst® 1.5.2 Software with Hotfixes to February 2011 DVD or the downloaded software package required for the installation.
2. If required, locate any DVDs or CDs containing optional add-on software.

To prepare the instrument and workstation for the installation

1. Log on to the computer as a user with local administrator privileges.
2. For processing workstations, proceed to the next procedure. For acquisition workstations do the following:
 - If your workstation has a GPIB card, make sure the instrument is powered on and connected to the GPIB card at the back of the workstation.
 - If upgrading from a previous version of the Analyst® software, deactivate any active hardware profiles before installing the Analyst 1.5.2 Software with Hotfixes to February 2011. **This is a required step before upgrading software.**
 - Do not remove any of the cards from the workstation.

To back up the Analyst Data folder to a safe location

Do not rename the existing Analyst Data folder. When you upgrade, it is recommended that you use the same Analyst Data folder from your previous installation. This gives you access to your existing data, such as hardware profiles, methods, and data files. It also retains your InstrumentData.ins and ParameterSettings.psf files.

1. Make a backup copy of the files and subfolders in the Analyst Data folder (do not simply rename the folder). The default location is D:\Analyst Data. Create the backup in a safe location, such as a network drive or a DVD. You are not required to restore these files as part of a normal upgrade; however, it is good practice to make sure that a backup exists.

2. The content of the Analyst Data folder includes the API Instrument folder, which contains the basic instrument calibration and parameter settings.



Note: As part of normal installation, the API Instrument folder and the CompoundLib.mdb is automatically backed up to the TEMP folder on your system. This folder is normally stored in <drive>:\Documents and Settings\

Installing the Analyst® 1.5.2 Software with Hotfixes to February 2011

Complete the following procedures to upgrade the workstation to the Analyst® 1.5.2 Software with Hotfixes to February 2011 release.

To install the Analyst® 1.5.2 Software with Hotfixes to February 2011



Note: If the Analyst 1.5 HotFixes to March 2009 was installed, the parameter Access Ranges were replaced by the firmware ranges and atypical behavior may be observed. If you are upgrading a system that had the Analyst 1.5 HotFixes to March 2009, then read the following section [For systems with the Analyst® 1.5 HotFixes to March 2009 installed](#). If the Analyst® 1.5 HotFixes to March 2009 was not installed then go to [Step 1](#).

1. If you are upgrading the software, deactivate the hardware profile and then close the Analyst® software before installing the Analyst 1.5.2 Software with Hotfixes to February 2011.
2. Make sure the Analyst 1.5.2 Software with Hotfixes to February 2011 DVD is in the DVD drive.



Note: If the installation browser does not appear, then browse to the Install folder on the DVD and double-click setup.exe.

3. Click **Install Analyst 1.5.2 Software with Hotfixes to February 2011**.

4. Follow the instructions in the installation wizard to install the software.



Note: MS Word is required to edit Reporter templates, but is not required to generate reports. If you do not have either MS Word 2003 or 2007 installed on the system, during the installation process a warning will be displayed informing you that Word 2003 or 2007 is required for the Reporter to function properly. You can either cancel the installation or continue with it. Once the Analyst 1.5.2 Software with Hotfixes to February 2011 is installed, you can install Word 2003 or 2007 if required.

For systems with the Analyst® 1.5 HotFixes to March 2009 installed

Before upgrading to the Analyst® 1.5.2 Software with Hotfixes to February 2011, contact support@absciex.com to obtain a needed patch for the Analyst 1.5 HotFixes to March 2009 software.

Upon installation of the Analyst 1.5 Patch for ParamSettings Access Ranges, the Parameter Settings file is scanned for parameters whose access ranges fall outside the normal operating range and will be replaced by normal operating access ranges. If you changed an access type to Operator mode and made changes to the access range, these changes will not be restored by the utility.

This utility will create log files that will inform you if the utility was run successfully. This file may be found in the following location: <Analyst Data Folder>\Projects\API Instrument\Log\General Information File.txt.

If changes were made to the parameter settings file by the utility, a description of all the changes are found in the following location: <Analyst Data Folder>\Projects\API Instrument\Log\ParamSettings<model>.txt

To check the GPIB driver version

Use this procedure if your system requires a GPIB connection.



Note: If you have already upgraded, or if you are installing to a processing workstation or to an instrument which is connected through an Ethernet connection, you do not need to perform this step.

1. On the Windows desktop, right-click **My Computer**.
2. Select **Manage**.

3. Click **Device Manager**.
4. Click **National Instruments GPIB interfaces**.
5. Right-click **PCI-GPIB**, and then select **Properties**.
6. Click the **Driver** tab. If the driver version is listed as 2.5, you do not need to upgrade the driver but it is recommended. If the driver is listed as a different version or if the driver is listed as Not available, see [Upgrading the GPIB Card Driver on page 59](#).

To update the firmware and configuration tables

Use the Firmware/Configuration Table Update program to automatically determine if either firmware or configuration tables need to be updated on the system. The utility performs only the necessary updates. The utility may also reset the mass spectrometer system controller; this is normal and is required by the update process. If you have a GPIB connection, before running this utility, make sure that the mass spectrometer is powered on and connected to the GPIB card and that the GPIB driver software is properly installed.

You must upgrade if:

- You are currently using Analyst 1.4.2 (or earlier) and wish to run Scheduled MRM™ experiments.
 - You are using the mass range extension and scan speed increase for the 5500 systems and the Analyst® 1.5 5500 Components HotFixes to April 2009 was *not* previously installed.
 - You are using the mass range extension for the API 3200™ system and the Analyst 1.5 HotFixes to March 2009 was *not* previously installed.
 - You are using the DuoSpray™ ion source on an API 4000™ instrument and the Analyst 1.5 HotFixes to March 2009 was *not* installed.
1. If the Analyst 1.5.2 Software with Hotfixes to February 2011 DVD is not already in the DVD drive, insert it.
 2. If the installation browser appears, click **Exit**.
 3. On the DVD drive, navigate to the \Extras\Instrument Update folder, and then double-click **ConfigUpdater.exe**. The Firmware/Configuration Table Update Program page appears, identifying the new firmware version it will install.
 4. To update the firmware, click **Next**.
 5. Follow the on-screen instructions to update your firmware and configuration tables.



Note: If the utility presents you with more than one choice for the configuration filename, choose the version with the highest number. For example, if you are presented with B5366004.fw and B5366005.fw, choose the B5366005.fw file. For more information on which versions are supported in the Analyst 1.5.2 Software with Hotfixes to February 2011, see [Firmware and Configuration Tables Files on page 33](#).

6. Click **Finish** to exit the utility.
-



Note: If you are upgrading the firmware on the 5500 systems, you will be prompted to manually restart the mass spectrometer.

(Optional) To install any scripts

- A number of research-grade scripts are available to extend the functionality of the Analyst® software. For more information on installing scripts, see the *Scripts User Guide* found in the Start Menu: All Programs > AB SCIEX > Analyst > Software Guides.

To run the Analyst® software for the first time

1. Start the Analyst® software by double-clicking the icon on the desktop.
2. (For acquisition workstations) Activate a hardware profile and then test the software to make sure that you are able to acquire data or process data.

To register the Analyst® software online

- Ten days from the date of installation, the software prompts you to register the Analyst® software online. This online registration helps AB SCIEX offer better support, and allows for easier notification about the availability of upgrades and patches, as well as other software-related information. For more information, see [Analyst® Software User Registration](#).

Analyst® Software User Registration

After you install the Analyst® software, register your installation online at: www.absciex.com/AnalystReg or contact support@absciex.com.

Registration of the software helps AB SCIEX offer better support. AB SCIEX will also notify you about the availability of

upgrades and patches, as well as other software-related information.

You can register from any computer with internet access; it does not have to be the computer on which the software is installed. Your name and email address, and the name, address, and telephone number of the company licensing the software are required. Optional information includes some brief questions on how the Analyst software is used at the site, plus a section for comments. You can choose whether to be contacted for software updates, product information, or electronic surveys. Review the privacy statement and contact information on the Web site for details about the information collected and its usage.



This section describes the operating system and computer requirements for installing the Analyst® 1.5.2 Software with Hotfixes to February 2011 over a network. There are several methods of deploying software over the network; however, for this document, the network installation was tested using Active Directory only. For more information, see the Analyst software Administrator Console section of the *Laboratory Director's Guide* for the Analyst Software found in the Start Menu: All Programs > AB SCIEX > Analyst > Software Guides.



Note: These procedures should be performed by someone with the prerequisite knowledge and the support of the IT department.

Important Information to Know Before Installing

To make sure that your installation is successful, all workstations must be connected to the Active Directory.

Analyst® 1.5.2 Software with Hotfixes to February 2011 Installation Over the Network

Before installing the Analyst® 1.5.2 Software with Hotfixes to February 2011 over the network, first install the following three prerequisite applications:

- Microsoft .NET Framework 3.5 SP 1
- Microsoft Visual C++ 2008 Runtime SP 1 Redistributable
- SaveAsPDF

Installing Microsoft .NET Framework 3.5 SP 1

Two ways of installing the Microsoft .NET Framework 3.5 SP 1 are covered in this guide:

- Using the Administrator Mode Setup
- Using Active Directory

To install Microsoft .NET Framework 3.5 SP 1 using the Administrator Mode Setup

1. Create a Network Image using the following steps:
 - Create a shared folder on the server, for example, NetFX35.

- Copy the **dotnetfx35.exe** file into the shared folder from the DVD.
2. Run the Setup using the following steps:
 - Verify that the Microsoft .NET Framework 3.5 SP1 redistributable package is available on the network server.
 - Click **Start > Run**.
 - Type the following command:
\\server\share\dotnetfx35.exe /q /norestart, where **server** is the server name and **share** is the name of the shared folder you created. For example, **\\server1\NetFX35\dotnetfx35.exe /q /norestart**.

To install Microsoft .NET Framework 3.5 SP 1 using Active Directory

1. Create a folder to hold the Microsoft .NET Framework 3.5 SP1 redistributable package, for example, C:\deploy.
2. Copy the **dotnetfx35.exe** file into this folder from the DVD.
3. Create the installation points for all the components of the .NET Framework.
 - Create a .bat file that contains the script provided on the [http://msdn.microsoft.com/en-us/library/cc160717\(VS.90\).aspx#appendix](http://msdn.microsoft.com/en-us/library/cc160717(VS.90).aspx#appendix) webpage, and place the .bat file in the folder you created in step 1, for example, C:\deploy. (If you used a different folder name, change the first line of the script accordingly.)
 - Open the Command Prompt window, and execute the .bat file to create the installation points.

The script creates the installation points for all the components in the AIP subfolder, and places each installation point in its own subfolder.

- Close the Command Prompt window.
4. In Windows Explorer, navigate to the extraction destination folder (AIP) to verify that the files were extracted.
 5. Move the folder and all its contents to the network share that you intend to use for deployment.

Installing Microsoft Visual C++ 2008 Runtime SP 1 Redistributable

Install the Microsoft Visual C++ 2008 Runtime SP 1 Redistributable by first creating a Network Image in the same

manner as shown in the procedure [To install Microsoft .NET Framework 3.5 SP 1 using the Administrator Mode Setup on page 25](#). In the Command Prompt window, type `\\server\share\Vcredist_x86.exe /q:a`, where server is the server name and share is the name of the shared folder you created.

Installing SaveAsPDF

Install the SaveAsPDF by first creating a Network Image in the same manner as shown in the procedure [To install Microsoft .NET Framework 3.5 SP 1 using the Administrator Mode Setup on page 25](#). In the Command Prompt window, type `\\server\share\SaveAsPDF.exe /quiet`, where server is the server name and share is the name of the shared folder you created.

Installing the Analyst® 1.5.2 Software with Hotfixes to February 2011 Over the Network

First prepare the environment using the following procedure.

To prepare the environment

1. On a server, create a distribution point for the software.
2. When the installation browser appears, click **Exit**.
3. To create an administrative image, in a command line, type `Msiexec.exe /a <PathToAnalyst.msi>`
`SHORTFILENAMES=1`
`TARGETDIR=<PathToDistributionPoint>`
`NAMESOFPROPERTIES=value /qr.`

The `SHORTFILENAMES` parameter is a Windows Installer property that uses short file names for the names of target files, rather than long file names. If the target volume does not support long names, this property has to be set to 1.

`NAMESOFPROPERTIES`: Parameter used to define the installation requirements

`ANALYSTPATH`: Destination location of the application (default is [ProgramFilesFolder]Analyst)

`ANALYSTDATAPATH`: Destination location of Analyst Data (default is the NTFS disk with the most free space\Analyst Data)

`SECURITYDATA`: Overwrite or not overwrite security database if it is found

"1" - overwrite

"0" - not overwrite (default)

`LIBSEARCHDATA`: Overwrite or not overwrite Library Search database if it is found

"1" - overwrite

"0" - not overwrite (default)

COMPOUNDATA - overwrite or not overwrite
Compound database if it is found

"1" - overwrite

"0" - not overwrite (default)

Example: Msiexec /a "d:\install\analyst.msi"
SHORTFILENAME=1 TARGETDIR="C:\Managed
Applications\Analyst152" LIBSEARCHDATA="1" /qr

4. After creating the distribution point, copy the Scripts folder, all the documentation (tutorials and guides) folders, the release notes, and the software installation guide to this location.

To install the image over the network

1. Make sure the Analyst® 1.5.2 Software with Hotfixes to February 2011 DVD is in the DVD drive.
2. Create an Organizational Unit containing all the workstations where the Analyst 1.5.2 Software with Hotfixes to February 2011 will be installed.
3. Create a Group Policy for the unit.
4. In the **Group Policy** dialog, expand the **Computer Configuration** and **Software Settings** nodes.
5. Right-click **Software Installation**, point to **New**, and then click **Package**.
6. Navigate to the .msi package in the distribution point.
7. Restart each workstation.

To create user accounts (for new Analyst® software installations only)

If the Analyst® software was uninstalled and then reinstalled, use this procedure to create user accounts.



Note: If you are upgrading from a previous version of the Analyst software and you choose to keep your existing user security database when installing the Analyst 1.5.2 Software with Hotfixes to February 2011, your user accounts are preserved and you do not need to perform this procedure.



Note: If you want to upgrade from the Analyst 1.4.1 software and wish to preserve your security database, then first upgrade to the Analyst 1.5 or 1.5.1 software (based on the 1.5.2 with Hotfixes to February 2011 installation source) before upgrading to the Analyst 1.5.2 Software with Hotfixes to February 2011.

1. After installing the Analyst 1.5.2 Software with Hotfixes to February 2011 over a network, start the Analyst software and log in as a local domain user named **administrator**.
2. In the Security Configuration window, click the **People** tab and then create new user accounts and assign roles.
3. Close the Analyst software.
4. Restart the Analyst software and log in using one of the accounts that you created in [Step 2](#).
5. If you are using Analyst Integrated mode, log off from Windows to log in as another user.



This section describes some issues that you may encounter while installing or upgrading to the Analyst® 1.5.2 Software with Hotfixes to February 2011. It suggests possible causes and offers solutions.

At AB SCIEX, we are committed to providing the highest level of support for the Analyst software users. To obtain answers to questions about any of our products, report problems, or suggest improvements, visit the website at www.absciex.com.

Table 7-1 Troubleshooting

Issue	Possible Cause/Solution
After installing, I cannot log on to the Analyst software.	Your user name might not have been successfully added to the security database during the upgrade. Log on to the computer as the local administrator, and then add your user name to the Analyst software through the Security Configuration dialog box.
I see the error message "Failed to load the parameter settings file" when I try to start a profile in the Analyst software.	If you restored any files or folders from a CD, or copied over files shipped with your instrument, these files might be set as read only. To use these files, remove the read-only setting from the files through Windows.



The following instrument firmware and configuration table versions are recommended for the Analyst® 1.5.2 Software with Hotfixes to February 2011. Instructions for making sure you have the latest versions of these files are included in the [To update the firmware and configuration tables on page 21](#). These tables are for reference purposes only.

Table A-1 Firmware Files for the 5500 Series of Instruments

Firmware	Version
Both systems	PIL0103

Table A-2 Firmware Files for all non-5500 Instruments

Firmware	Version
340 Main	M401402
332 Main	M3L1417

Table A-3 Configuration Table Files for the Analyst® 1.5.2 Software with Hotfixes to February 2011

Instrument	Configuration Table File
AB SCIEX QTRAP® 5500 instrument	FWQTrap5500R01.fw
AB SCIEX Triple Quad™ 5500 instrument	FWTripleQuad5500R01.fw
4000 QTRAP® instrument (U series serial number)	B9609010.fw
4000 QTRAP instrument (AR series serial number)	B9609031.fw
3200 QTRAP® instrument	B9631001.fw
QTRAP® instrument	B9611003.fw
API 5000™ instrument	B9669001.fw
API 4000™ instrument	B5366005.fw B5366020.fw (for the NanoDCI source)

Table A-3 Configuration Table Files for the Analyst® 1.5.2 Software with Hotfixes to February 2011 (cont'd)

Instrument	Configuration Table File
API 3200™ instrument	B9633002.fw
API 3000™ instrument	A8958000.fw
API 2000™ instrument	A7483000.fw

The Analyst® software supports the peripheral devices listed in the following table. Firmware versions that have been fully qualified with the Analyst 1.5.2 Software with Hotfixes to February 2011 are listed without parentheses. Versions shown in parentheses have functioned acceptably in more limited testing.

In most cases, more recent firmware versions from the device manufacturer will work with the Analyst 1.5.2 Software with Hotfixes to February 2011. If you encounter difficulties, change the device firmware to the version listed in this table. For information on checking and upgrading firmware, see the documentation provided by the peripheral device manufacturer. For information on installation and configuration of peripheral devices, see the *Peripheral Devices Setup Guide*.

Table B-1 Agilent 1290 series

Peripheral Device	Tested Firmware (and Other Firmware)	Communication Cable Required
Binary Pump	B.06.32 build005	WC024736 (serial cable) or built-in Ethernet
Standard Autosampler	A.06.32 build006	WC024736 or could use Ethernet if the add-on board for the device is available
TCC – Thermostatted Column Compartment	A.06.32 build005	WC024736
DAD – Diode Array Detector	B.06.32 build004	WC024736 or built-in Ethernet

Table B-2 Agilent 1260 series

Peripheral Device	Tested Firmware (and Other Firmware)	Communication Cable Required
Isocratic Pump	A.06.32 build010	WC024736 or could use Ethernet if the add-on board for the device is available
Quaternary Pump	A.06.32 build010	WC024736 or could use Ethernet if the add-on board for the device is available
Binary Pump	A.06.32 build011	WC024736 or could use Ethernet if the add-on board for the device is available
High Performance Autosampler	A.06.32 build006	WC024736 or could use Ethernet if the add-on board for the device is available
TCC – Thermostatted Column Compartment	A.06.32 build005	WC024736
DAD – Diode Array Detector	B.06.32 build004	WC024736 or could use Ethernet if the add-on board for the device is available

Table B-3 Agilent 1200 series

Peripheral Device	Tested Firmware (and Other Firmware)	Communication Cable Required
Isocratic Pump	A.06.02, A.06.32 build011	WC024736 or could use Ethernet if the add-on board for the device is available
Quaternary Pump	A.06.02, A.06.32 build011	WC024736 or could use Ethernet if the add-on board for the device is available
Binary Pump	A.06.02, A.06.04, A.06.32 build011	WC024736 or could use Ethernet if the add-on board for the device is available
Binary SL Pump	A.06.02 A.06.04	WC024736 or could use Ethernet if the add-on board for the device is available
Capillary Pump	A.06.02, A.06.32 build011	WC024736 or could use Ethernet if the add-on board for the device is available
Nanoflow Pump	A.06.02, A.06.32 build011	WC024736 or could use Ethernet if the add-on board for the device is available

Table B-3 Agilent 1200 series (cont'd)

Peripheral Device	Tested Firmware (and Other Firmware)	Communication Cable Required
Standard Autosampler	A.06.32, A.06.32 build004	WC024736 or could use Ethernet if the add-on board for the device is available
High Performance Autosampler	A.06.02 A.06.04, A.06.32 build006	WC024736 or could use Ethernet if the add-on board for the device is available
High Performance Autosampler SL	A.06.32, A.06.32 build006	WC024736 or could use Ethernet if the add-on board for the device is available
Micro Well-plate Autosampler	A.06.02, A.06.32 build006	WC024736 or could use Ethernet if the add-on board for the device is available
High Performance Autosampler SL Plus	A.06.32 build006	WC024736 or could use Ethernet if the add-on board for the device is available
TCC – Thermostatted Column Compartment	A.06.02, A.06.32 build005	WC024736 or could use Ethernet if the add-on board for the device is available

Table B-3 Agilent 1200 series (cont'd)

Peripheral Device	Tested Firmware (and Other Firmware)	Communication Cable Required
TCC SL – Thermostatted Column Compartment	A.06.02	WC024736 or could use Ethernet if the add-on board for the device is available
DAD – Diode Array Detector	A.06.02, (A.06.32 build003), B.06.32 build004	WC024736 or could use Ethernet if the add-on board for the device is available
DAD SL – Diode Array Detector SL	B.01.02, B.06.32 build004	WC024736 or could use Ethernet if the add-on board for the device is available

Table B-4 Agilent 1100 series

Peripheral Device	Tested Firmware (and Other Firmware)	Communication Cable Required
Binary Pump	A.05.06, 4.11 A.05.11, A.06.10 build005	WC024736* or WC021365 (GPIB cable) or could use Ethernet if the add-on board for the device is available
Quarternary Pump	A.04.11 (5.04) A.05.11, A.06.10 build005	WC024736 or WC021365 (GPIB cable) or could use Ethernet if the add-on board for the device is available
Isocratic Pump	A.04.11, A.06.10 build005	WC024736 or WC021365 (GPIB cable) or could use Ethernet if the add-on board for the device is available
Capillary Pump	A.04.11, A.06.30 build007	WC024736 or WC021365 (GPIB cable) or could use Ethernet if the add-on board for the device is available
Nano Pump	A.05.06, 5.04 (5.05), A.06.30 build007	WC024736 or WC021365 (GPIB cable) or could use Ethernet if the add-on board for the device is available
Standard Autosampler	A.04.10 (5.04) A.05.11, A.06.10 build006	WC024736 or WC021365 (GPIB cable) or could use Ethernet if the add-on board for the device is available

Table B-4 Agilent 1100 series (cont'd)

Peripheral Device	Tested Firmware (and Other Firmware)	Communication Cable Required
Micro Autosampler	A.05.04 (4.10), A.06.10 build006	WC024736 or WC021365 (GPIB cable) or could use Ethernet if the add-on board for the device is available
Well-plate Autosampler	A.05.07, 4.14 (5.02), A.06.31 build001	WC024736 or WC021365 (GPIB cable) or could use Ethernet if the add-on board for the device is available
Micro Well-plate Autosampler	(A.05.09, 4.14), A.06.31build001	WC024736 or WC021365 (GPIB cable) or could use Ethernet if the add-on board for the device is available
Thermostatted Column Compartment	A.05.06, 4.11 (5.05), A.06.10 build004	WC024736 or WC021365 (GPIB cable) or could use Ethernet if the add-on board for the device is available

Table B-4 Agilent 1100 series (cont'd)

Peripheral Device	Tested Firmware (and Other Firmware)	Communication Cable Required
DAD – Diode Array Detector	A.05.06 (5.09, 4.11), A.06.10 build004, B.06.30 build006	WC024736 or WC021365 (GPIB cable) or could use Ethernet if the add-on board for the device is available
DAD – Diode Array Detector SL	B.01.01, B.06.30 build006	WC024736 or WC021365 (GPIB cable) or could use Ethernet if the add-on board for the device is available
* WC024736 is a Standard Null Modem cable DB9/DB9 female		

Table B-5 CTC

Peripheral Device	Tested Firmware (and Other Firmware)	Communication Cable Required
HTS PAL Autosampler	2.4.0, 2.3.6	WC024736
HTC PAL Autosampler	2.3.6	WC024736
LC PAL Autosampler	2.3.6	WC024736
DLW	4.10 and Rev 5 cycle files	N/A

Table B-6 Gilson

Peripheral Device	Tested Firmware (and Other Firmware)	Communication Cable Required
215 Autosampler	2.20	WC024735**
with 819 Valve	1.00	Gilson GSIOC
233 Autosampler	BV1.11	WC024735
with 402 Syringe	SV1.10 (SV2.3)	Gilson GSIOC

Table B-7 Harvard

Peripheral Device	Tested Firmware (and Other Firmware)	Communication Cable Required
Harvard	22 Syringe Pump	22.90
** WC024735 is a Standard Modem cable DB25 male/DB9 female.		

Table B-8 LC Packings

Peripheral Device	Tested Firmware (and Other Firmware)	Communication Cable Required
UltiMate Integrated System	5.06 (6.00)	Cables available from LC Packings
Famos Autosampler (Well-plate)	2.02	Cables available from LC Packings
Famos Autosampler (Carousel)	1.14	Cables from LC Packings

Table B-9 PE Series 200

Peripheral Device	Tested Firmware (and Other Firmware)	Communication Cable Required
Autosampler	1.08	WC024737
Column Oven	1134	WC024736
Micro Pump	2.43	WC024736
Quaternary Pumps	2.43	WC024736

Table B-10 Shimadzu

Peripheral Device	Tested Firmware (and Other Firmware)	Communication Cable Required
SCL-10Avp System Controller	5.40 (5.33)	WC024736
SIL-10ADvp Autosampler	5.32	All other Shimadzu devices require 2-pin optical cables to connect to the System Controller. These are available from Shimadzu.
SIL-HTA Autosampler	6.02	
SIL-HTC Autosampler	6.02 (6.03)	
SIL-20ACXR Autosampler	1.20 or later	
SIL-20AXR Autosampler	1.20 or later	
LC-6AD Pump	1.4	—
LC-8A Pump	1.5	—
LC-10AD Pump	3.1	—
LC-10AS Pump	3.1	—
LC-10AT Pump	3.1	—
LC-10Ai Pump	3.1	—
LC-10ADvp Pump	5.27, (5.25, 5.26)	—
LC-10ATvp Pump	5.27	—

Table B-10 Shimadzu (cont'd)

Peripheral Device	Tested Firmware (and Other Firmware)	Communication Cable Required
LC-20ADXR Pump	1.20 or later	—
CTO-10A[C] Column Oven	3.0	—
CTO-10Avp Column Oven	5.24	—
CTO-10ACvp Column Oven	5.24	—
CTO-10ASvp Column Oven	5.24	—
SPD-10A Detector	3.0	—
SPD-10Ai Detector	3.0	—
SPD-10AV Detector	3.0	—
SPD-10AVi Detector	3.0	—
SPD-10Avp Detector	5.22	—
SPD-10AVvp Detector	5.23 (5.22)	—
OptionBox-L Subcontroller	3.2	—
SubcontrollerVP	5.20	—
FCV-12AH Valve	N/A	—
FCV-13AL Valve	N/A	—
FCV-14AH Valve	N/A	—
CBM-20 A with Ethernet Switch (system controller with 8 fiber optic ports)	1.06, 1.05 or later	—

Table B-10 Shimadzu (cont'd)

Peripheral Device	Tested Firmware (and Other Firmware)	Communication Cable Required
CBM-20 A Lite with Ethernet Switch (system controller with 4 fiber optic ports; installs onto pump or autosampler)	—	—
LC-20AD Solvent Delivery Unit	1.07 1.04 or later	—
LC-20AB Binary Solvent Delivery Unit	—	—
LC-20AT Solvent Delivery Unit	—	—
SIL-20A Autosampler	—	—
SIL-20AC Autosampler	1.04 or later	—
Rack Changer	—	—
Rack Changer C	—	—
CTO-20A Column Oven	—	—
CTO-20AC Column Oven	1.04	—
SPD-20A UV-VIS Detector	—	—
SPD-20AV UV-VIS Detector	1.03	—

Table B-11 Spark-Holland

Peripheral Device	Tested Firmware (and Other Firmware)	Communication Cable Required
Endurance Autosampler	2.05	Requires the Analyst® Software Driver Kit p/n 0920-768 from Spark (sales@spark.nl)

Table B-12 Valco

Peripheral Device	Tested Firmware (and Other Firmware)	Communication Cable Required
2 Position Valve	C.9	—

Notes on Firmware for Agilent Users

It is recommended that Agilent users use the most recently distributed firmware from Agilent. Due to Agilent's frequent firmware release schedule, AB SCIEX cannot test all firmware on all devices in all Analyst® software versions, but Agilent's releases are backward-compatible. If a problem occurs, downgrade the firmware indicated in the previous table. Agilent CAN support requires that all firmware in the CAN-linked stack be of the same major revision (4.x, 5.x, and so on).

Peripheral Devices Controlled via AAO Software Interface

The Analyst Access Object (AAO) is an interface to the Analyst® software that allows peripheral device vendors to develop device control software that can be plugged into the Analyst software to enable integrated LC/MS control.

Vendors that have released AAO software are listed below. For additional information, contact vendors directly.

- Alcott Chromatography
- Cohesive Technologies
- Dionex Corp.
- Eksigent Technologies
- ESA Inc.

- Flux Instruments AG
- Jasco Inc.
- Leap Technologies
- Maylab Analytical Instruments
- Shimadzu
- Shiseido Co. Ltd.
- Spark Holland
- Waters Corp.

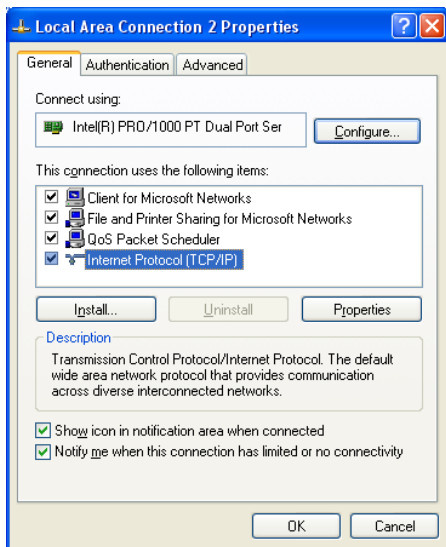
This section provides the steps for configuring the Intel Pro 1000/PT Dual Port Ethernet card.

To configure the card

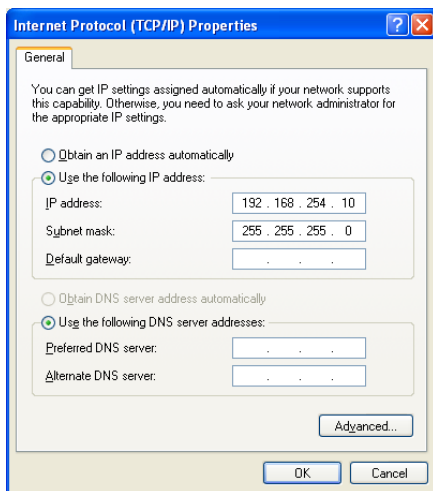


Note: This procedure assumes that you are using a T3400 or Optiplex 960 workstation. For other computer systems, screens and steps might vary slightly.

1. On the Windows desktop, click **Start > Control Panel > Network and Internet Connections**.
The Network and Internet Connections screen appears.
2. Click **Network Connections**.
The Network Connections dialog box appears.
3. Right-click **Local Area Connection 2 or 3**.
4. Select **Properties**.
The Local Area Connection 2 (or 3) Properties dialog box appears.



5. Click **Internet Protocol**.
6. Click **Properties**.
The Internet Protocol dialog box appears.



7. Select **Use the following IP address**.
8. In the IP address field, type the default IP address.
9. Press **TAB**.
The Subnet mask field is automatically filled.
10. Click **OK**, and then close the Local Area Connection 2 (or 3) Properties dialog box.

To check the DAD settings

1. Make sure that the DAD unit is connected to the Ethernet Port A (if using Local Area Connection 2) or Port B (if using Local Area Connection 3).
2. On the back of the DAD unit, check the Initializing Mode switches. The switches should be set as follows: SW 6 OFF, SW 7 ON, SW 8 ON. For more information, see the Agilent 1200 Series Diode Array and Multiple Wavelength Detector SL User Manual.
3. Make sure that the DAD is using the default LAN settings (IP address 192.168.254.11).
4. To confirm the connection between the workstation and the DAD, from Windows, click **Start**, and then select **Run**.

The Run dialog box appears.

5. In the **Open** box, type ping 192.168.254.11-t, and then click **OK**.
 - If you receive the message: "Request Timed Out" the communication has failed. Check your connections, IP settings, and cables, and then repeat steps 1 to 5.
 - If you receive the message: "Reply from 192.168.254.11" the communication is successful. Continue to step 6.
6. Using the Analyst® software, add the DAD to a hardware profile. For more information, see the operator's guide that comes with the instrument.



This section provides the steps for upgrading the driver software for the optional National Instruments ADC card.

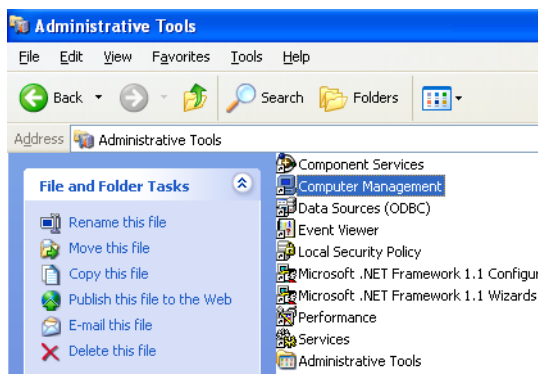
Upgrading the Driver Software for the ADC Card

Follow the procedure below to upgrade the driver software for the National Instruments ADC card, if desired.

The Analyst® 1.5.2 Software with Hotfixes to February 2011 requires version 8.3 of the driver software for the National Instruments ADC card. Install the NI-DAQmx 8.3 from the accompanying CD or download it from the National Instruments website. This file is over 500 MB. To download this file, start Internet Explorer and then copy <http://joule.ni.com/nidu/cds/view/p/id/301/lang/en>.

To determine if the ADC card is installed

1. On the Windows desktop, click **Start > Control Panel**.
2. Click **Administrative Tools**.

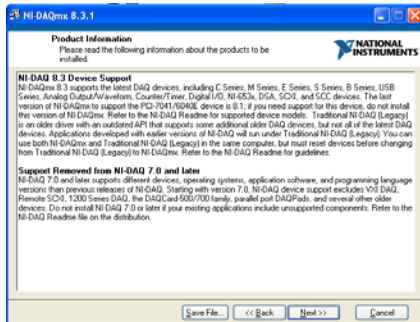


3. Click **Computer Management**.
4. Expand **System Tools**, and then click **Device Driver**.
5. If present, expand **Data Acquisition Devices**.
6. In the list of installed software, look for **PCI-6032** or **PCI-6259** and then do one of the following:
 - If you see either of these entries, complete the steps in the following procedures.

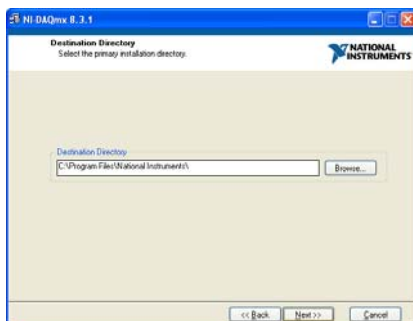
- If you do not see either of these entries, you do not have the ADC card installed and do not need to update the driver.

To update the driver

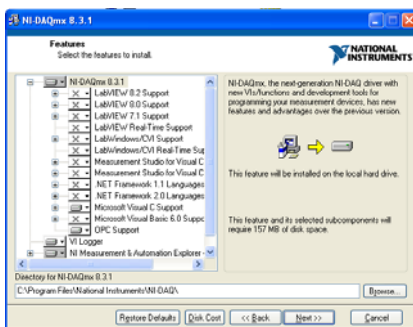
1. Right click **PCI-6032** or **PCI-6259**, and then click **Uninstall**.
A confirmation message appears.
2. Click **OK**.
3. Close the Computer Management window to return to the Control Panel.
4. Click **Add or Remove Programs**.
5. Click **National Instruments Software**, and then click **Change**.
6. On the National Instruments Software panel, click **NI-DAQ 7.1 Traditional**, and then click **Remove**.
A confirmation message appears.
7. Click **Yes**.
A message appears prompting you to restart the computer.
8. Click **No**.
9. Navigate to the folder where the new NI-DAQmx 8.3 software has been extracted. If the software is not on your computer, download the file <http://joule.ni.com/nidu/cds/view/p/id/301/lang/en>.
10. Double-click **Setup.exe**.
The Product Information window appears.



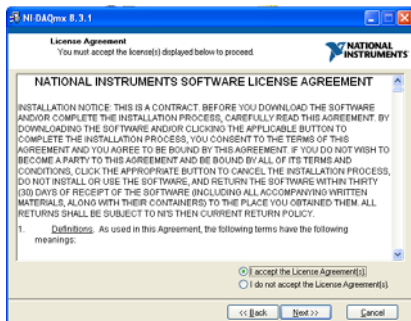
11. Click **Next**.
The Destination Directory window appears.



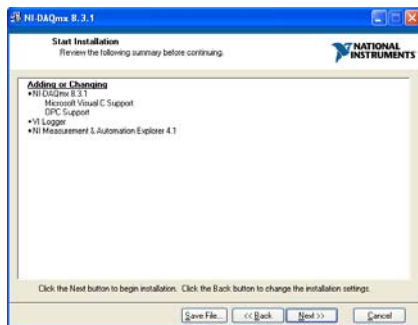
12. Click **Next**.
The Features window appears.



13. Accept the default by clicking **Next**.
The License Agreement window appears.



14. Click **I accept the license agreement**, and then click **Next**. The Start Installation window appears.



15. Click **Next**.
When the installation is complete, the Completion window appears.
16. Click **Next**.
You are prompted to restart your computer.
17. Click **Restart**.
When the computer restarts, an NI Product Registration window appears. Registration is optional and is not required to continue.
The Found New Hardware Wizard appears prompting you to connect to Windows Update to search for a new driver.
18. Select **No, not this time**.

19. When prompted for the location of the new software, select **Install the software automatically (Recommended)**, and then click **Next**.

After the installation is complete, the Completion window appears.

20. Click **Finish**.

The ADC card driver is now installed.

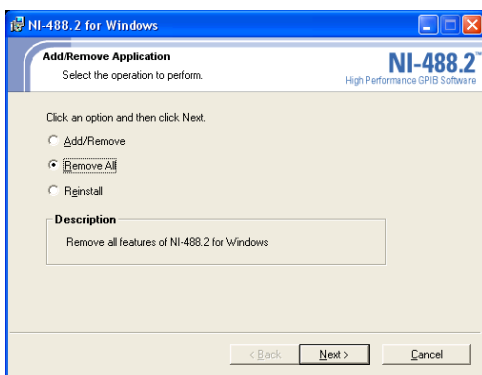


This section provides the steps for upgrading the driver software for the optional National Instruments GPIB card.

Upgrading the Driver Software for the GPIB Card

1. If you did not deactivate the active hardware profile at the beginning of this upgrade procedure, do so now.
2. Open the Windows Control Panel.
3. Double-click **Add/Remove Programs**.
4. From the list of installed software, click **NI-488.2 2.x**.
5. Click **Change**.

The Add/Remove Application window appears.



6. Select **Remove All**, and then follow the on-screen instructions to remove the software.
7. Click **Finish** when the wizard completes.
8. Make sure the Analyst® 1.5.2 Software with Hotfixes to February 2011 DVD is in the DVD drive.
9. Browse to the Drivers folder.
10. In the GPIB 2.5 folder, click **Setup.exe** and then follow the instructions in the installation wizard to install the driver.
11. Register the software and then click **Finish**.
12. If the computer does not restart automatically, restart the computer and log on to the computer as a user with local administrator privileges.



Several documents are installed along with the Analyst® 1.5.2 Software with Hotfixes to February 2011 to help you in your work. The following table provides a list of available documents and where they can be found after you have installed the software.

Start Menu: All Programs > AB SCIEX > Analyst

- Software Guides (See Table F-1 for a list of software documentation)
- Tutorials
- Hardware Guides
- Safety Guides
- Site Planning Guides
- Qualified Maintenance Guides
- Ion Source Guides

Application Folder: <drive>:\Program Files\Analyst\Help\

- Software Guides
- Tutorials
- Hardware Guides
- Safety Guides
- Site Planning Guides
- Qualified Maintenance Guides
- Ion Source Guides

Table F-1 Software Documentation

Document	Description
<i>Getting Started Guide</i>	Provides procedures for setting up and using the Analyst® software to create methods, acquire samples, and analyze data.
<i>Software Reference Guide</i>	Describes the features and functionality of the Analyst software.
<i>Laboratory Director's Guide</i>	Describes the security functionality of the Analyst software.
<i>Scripts User Guide</i>	Provides procedures for installing and using the Analyst software scripts.
<i>Manual Tuning Tutorial</i>	Provides procedures for manually tuning your instrument.

Table F-1 Software Documentation (cont'd)

Document	Description
<i>Manual Optimization Tutorial</i>	Provides procedures for manually optimizing the instrument for a particular analyte.
<i>Automatic Optimization Tutorial</i>	Provides procedures for using Compound Optimization to optimize the instrument for a particular analyte.
<i>IDA Tutorial</i>	Provides procedures for using the IDA Method Wizard to create an IDA experiment.
<i>Scheduled MRM™ Algorithm Tutorial</i>	Provides procedures for using the <i>Scheduled MRM™</i> algorithm feature.
<i>Analyst Software Show Me</i>	Provides an introduction and describes basic functionality of the Analyst software.
<i>Peripheral Devices Setup Guide</i>	Provides procedures for connecting peripheral devices to the computer and instrument.
<i>Standard Quantitation Tutorial</i>	Provides procedures for creating a method that can be used to obtain a quantitation curve using prepared standards.
<i>Peptide and Protein Quantitation Tutorial</i>	Provides procedures for creating methods that you can use for peptide and protein quantitation.

Table F-2 Instrument Documentation

Document	Description
<i>Hardware Guide</i>	Provides information about the instrument.
<i>Safety Practices</i>	Provides information in six languages about instrument safety as well as safety requirements for the laboratory.
<i>Qualified Maintenance Procedures</i>	Provides procedures for cleaning and maintaining the instrument. Note: Only trained operators should perform any cleaning or maintenance procedure.
<i>Site Planning Guide</i>	Provides information about how to prepare the site as well as materials required for installing the instrument.
<i>Ion Source Guides</i>	Provides procedures for installing and testing the ion sources.
<i>Ion Optics Tutorial</i>	Provides information about the instrument ion optics.

