



Cliquid® 3.3 Software

Installation Guide for Upgrades



CL

This document is provided to customers who have purchased AB Sciex equipment to use in the operation of such AB Sciex equipment. This document is copyright protected and any reproduction of this document or any part of this document is strictly prohibited, except as AB Sciex may authorize in writing.

Software that may be described in this document is furnished under a license agreement. It is against the law to copy, modify, or distribute the software on any medium, except as specifically allowed in the license agreement. Furthermore, the license agreement may prohibit the software from being disassembled, reverse engineered, or decompiled for any purpose. Warranties are as stated therein.

Portions of this document may make reference to other manufacturers and/or their products, which may contain parts whose names are registered as trademarks and/or function as trademarks of their respective owners. Any such use is intended only to designate those manufacturers' products as supplied by AB Sciex for incorporation into its equipment and does not imply any right and/or license to use or permit others to use such manufacturers' and/or their product names as trademarks.

AB Sciex warranties are limited to those express warranties provided at the time of sale or license of its products and are AB Sciex's sole and exclusive representations, warranties, and obligations. AB Sciex makes no other warranty of any kind whatsoever, expressed or implied, including without limitation, warranties of merchantability or fitness for a particular purpose, whether arising from a statute or otherwise in law or from a course of dealing or usage of trade, all of which are expressly disclaimed, and assumes no responsibility or contingent liability, including indirect or consequential damages, for any use by the purchaser or for any adverse circumstances arising therefrom.

For research use only. Not for use in diagnostic procedures.

The trademarks mentioned herein are the property of AB Sciex Pte. Ltd. or their respective owners.

AB SCIEX™ is being used under license.

© 2015 AB Sciex Pte. Ltd.



AB Sciex Pte. Ltd.
Blk 33, #04-06
Marsiling Ind Estate Road 3
Woodlands Central Indus. Estate.
SINGAPORE 739256

Contents

Chapter 1 Installation Checklist	4
Chapter 2 Installation Procedures	7
Cliquid Software Installation DVD.....	7
Contents of the Installation DVD.....	7
Upgrade to the Cliquid 3.3 Software.....	9
Install the Cliquid Software.....	9
Activate the Software.....	11
Activate the Amino Acid Feature.....	13
Activate the ChemoView Feature.....	14
Activate the LIMS Communications Feature.....	15
Activate the Screening Feature.....	17
Chapter 3 Post-Installation Procedures	19
Set SQL Server (SQLEXPRESS) Log On to Local System Account.....	19
Example iMethod Applications.....	20
Example Library Application.....	22
Example Quant Report Style with Record Modified Application.....	22
(Optional) Install an Example iMethod Application.....	22
(Optional) Save Acquisition Methods for Shimadzu Prominence LC Systems.....	23
(Optional) Update Instrument Settings in Unpacked Acquisition Methods for the QTRAP Series of Instruments.....	24
Library Search Parameters.....	25
Chapter 4 Troubleshooting	26
Appendix A Configure the Analyst Software	28
Set the Security Mode to Mixed Mode.....	28
Add all Required Users.....	28
Assign Users to Roles.....	29
Assign Single Users to Roles.....	29
Assign Multiple Users to Roles using the Assign Role Utility.....	30
Modify Peak Review Default Options.....	31
Modify the Quant Method Editor Settings.....	32
Disable the Analyst Software Audit Trail Functionality.....	33
Appendix B Download the Software from the AB SCIEX Web Site	35
Revision History	36

Installation Checklist

1

Use this checklist to make sure that all steps in the upgrade procedure have been completed.

Note: An upgrade from a version of the Cliquid® software prior to version 3.2 must be performed only by fully qualified AB SCIEX personnel. Contact AB SCIEX to schedule the upgrade.

Table 1-1 Installation Checklist

Task	Complete	N/A
Make sure that an English version of the Microsoft Windows 7 (32-bit) operating system with SP1 is installed.		
Make sure that Microsoft Office 2013 is installed. Note: Office 2010 is also supported by the Cliquid 3.3 software.		
If the computer has been upgraded to Office 2010 or Office 2013, then instruct each user assigned to the computer to log on to Windows, open Word, respond to the setup prompt, and then close Word. The user should also open and close Excel.	○	○
Make sure that the format for numbers, currencies, dates, and time is set to English (United States).		
Make sure that a supported version of the Analyst® software is installed. Note: Analyst 1.6.2 software or higher must be installed.		
If the Analyst software has been upgraded, then instruct each user assigned to the computer to open and then close the software.	○	○
Make sure that all Cliquid software archives are closed.		
Close all applications on the computer.		
(Optional) Install the ChemoView™ 2.0.3 software. Refer to the documentation provided with the ChemoView software. Note: The ChemoView 2.0.3 software is only compatible with the Microsoft Windows 7 (32-bit) operating system.	○	○

Table 1-1 Installation Checklist (continued)

Task	Complete	N/A
(Optional) Install the MPX™ driver software, version 1.2.1. Refer to the documentation provided with the MPX driver software.	<input type="radio"/>	<input type="radio"/>
Note: The MPX driver software, version 1.2.1, is only compatible with the Microsoft Windows 7 (32-bit) operating system.		
(Optional) Install the LibraryView™ software. Refer to the documentation provided with the LibraryView software.	<input type="radio"/>	<input type="radio"/>
Note: The LibraryView software is only compatible with the Microsoft Windows 7 (32-bit) operating system.		
Install the Cliquid 3.3 software.		
License the Cliquid software.		
Configure the Cliquid Software		
Set up the user profile.		
Set up the autosampler.		
(Optional) Install the appropriate example iMethod™ applications.	<input type="radio"/>	<input type="radio"/>
(Optional) If example iMethod applications have been installed and a Shimadzu Prominence LC system is part of the system configuration, then re-save the unpacked acquisition methods.	<input type="radio"/>	<input type="radio"/>
(Optional) If example iMethod applications have been installed and a QTRAP® system (any of the QTRAP series of instruments) is part of the system configuration, then update the instrument settings in the unpacked acquisition methods.	<input type="radio"/>	<input type="radio"/>
(Optional) If amino acid testing will be performed, then activate the Amino Acid feature.	<input type="radio"/>	<input type="radio"/>
(Optional) If ChemoView software testing will be performed, then activate the ChemoView feature.	<input type="radio"/>	<input type="radio"/>
(Optional) If a LIMS/LIS (Laboratory Information Management System/Laboratory Information System) is used to store sample information, then activate and enable the LIMS communications feature.	<input type="radio"/>	<input type="radio"/>

Installation Checklist

Table 1-1 Installation Checklist (continued)

Task	Complete	N/A
(Optional) If screening testing will be performed, then:		
Activate the Screening feature.	<input type="radio"/>	<input type="radio"/>
Install the example library.	<input type="radio"/>	<input type="radio"/>
Set the library search parameters.	<input type="radio"/>	<input type="radio"/>
(Optional) If general unknown or targeted and unknown screening testing will be performed, then set the general unknown and targeted & unknown screening parameters.	<input type="radio"/>	<input type="radio"/>

This section describes the contents of the Cliquid® software installation DVD and provides procedures for installing all required software.

Note: The user must have Local Administrator privileges on the computer to install the software.

This section contains the following information:

- [Cliquid Software Installation DVD on page 7](#)
- [Upgrade to the Cliquid 3.3 Software on page 9](#)

Cliquid Software Installation DVD

Contents of the Installation DVD

The following software applications are included on the installation DVD:

- Microsoft .NET Framework 4.0
- Microsoft Windows Installer 4.5
- MDAC 2.8 SP1
- SQL Express 2008 R2
- SQL Server Compact 3.5
- Visual C++ Redistributable Package
- Adobe Reader 11.0.9
- LibraryView™ Framework 1.0.1
- Cliquid 3.3 software

The following documents are included on the installation DVD:

- Cliquid Software Installation Guide for Upgrades (.pdf file)
- Peak Review for Quantitation Tests Tutorial (.pdf file)
- Interactive Data Review for Screening Tests Tutorial (.pdf file)
- Report Templates Tutorial (.pdf file)
- Cliquid Software Reference Guide (.pdf file)

Installation Procedures

- Release Notes (.pdf file)
- License Agreement (.rtf file)

The following example iMethod™ applications are included in the iMethod Applications folder on the installation DVD:

- Example iMethod applications for each of the following instrument configurations (refer to [Example iMethod™ Applications on page 20](#) for a complete list of the contents):
 - API 3200™ system, with an Agilent 1260 LC system, a Shimadzu Prominence LC system, a Shimadzu Prominence XR LC system, an Eksigent® ultraLC 110 system, or an Eksigent® ultraLC 110-XL system.
 - API 4000™ system, with an Agilent 1260 LC system, a Shimadzu Prominence LC system, a Shimadzu Prominence XR LC system, an Eksigent® ultraLC 110 system, or an Eksigent® ultraLC 110-XL system.
 - SCIEX Triple Quad™ 4500 system, with an Agilent 1260 LC system, a Shimadzu Prominence LC system, a Shimadzu Prominence XR LC system, an Eksigent® ultraLC 110 system, or an Eksigent® ultraLC 110-XL system.
 - API 5000™ system, with an Agilent 1260 LC system, a Shimadzu Prominence LC system, a Shimadzu Prominence XR LC system, an Eksigent® ultraLC 110 system, or an Eksigent® ultraLC 110-XL system.
 - SCIEX Triple Quad™ 5500 system, with an Agilent 1260 LC system, a Shimadzu Prominence LC system, a Shimadzu Prominence XR LC system, an Eksigent® ultraLC 110 system, or an Eksigent® ultraLC 110-XL system.
 - SCIEX Triple Quad™ 6500 system, with an Agilent 1260 LC system, a Shimadzu Prominence LC system, a Shimadzu Prominence XR LC system, an Eksigent® ultraLC 110 system, or an Eksigent® ultraLC 110-XL system.
 - 3200 QTRAP® system, with an Agilent 1260 LC system, a Shimadzu Prominence LC system, a Shimadzu Prominence XR LC system, an Eksigent® ultraLC 110 system, or an Eksigent® ultraLC 110-XL system.
 - 4000 QTRAP® system, with an Agilent 1260 LC system, a Shimadzu Prominence LC system, a Shimadzu Prominence XR LC system, an Eksigent® ultraLC 110 system, or an Eksigent® ultraLC 110-XL system.
 - QTRAP® 4500 system, with an Agilent 1260 LC system, a Shimadzu Prominence LC system, a Shimadzu Prominence XR LC system, an Eksigent® ultraLC 110 system, or an Eksigent® ultraLC 110-XL system.
 - QTRAP® 5500 system, with an Agilent 1260 LC system, a Shimadzu Prominence LC system, a Shimadzu Prominence XR LC system, an Eksigent® ultraLC 110 system, or an Eksigent® ultraLC 110-XL system.
 - QTRAP® 6500 system, with an Agilent 1260 LC system, a Shimadzu Prominence LC system, a Shimadzu Prominence XR LC system, an Eksigent® ultraLC 110 system, or an Eksigent® ultraLC 110-XL system.
- Example Library application, containing a spectrum for each of the seven example triazine compounds included in the example iMethod applications.
- Example Quant Report Style with Record Modified application, containing an example report style that contains an additional field (Record Modified) used to indicate that changes have been made to the Results Table.

Upgrade to the Cliquid 3.3 Software

Any of the following versions of the Cliquid® software can be upgraded to this version of the software:

- Cliquid software, version 3.2 that is installed on the Microsoft Windows 7 (32-bit) operating system with SP1
- Cliquid software, version 3.2.1 that is installed on the Microsoft Windows 7 (32-bit) operating system with SP1

The following upgrades must be performed only by fully qualified AB SCIEX personnel:

- Upgrade from an earlier version of the Cliquid software.
- Upgrade from version 3.2 that is installed on the Microsoft Windows XP operating system.
- Updated from version 3.2.1 that is installed on the Microsoft Windows XP operating system.

Contact AB SCIEX to schedule the upgrade.

Note: Before upgrading to the Cliquid 3.3 software, make sure that the following applications are installed on the acquisition computer:

- Microsoft Windows 7 (32-bit) operating system
 - Microsoft Office 2010 or higher
 - A supported version of the Analyst® software
-

Install the Cliquid Software

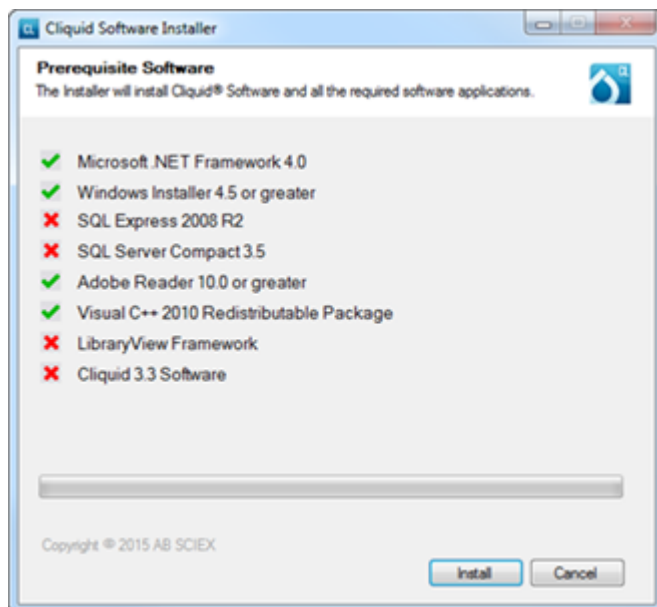
All of the prerequisite software and the Cliquid 3.3 software must be installed on the acquisition workstation.

1. To begin, log on to the computer as a Microsoft Windows user with administrator privileges.
2. Make sure that the Analyst software hardware profile is deactivated.
3. Make sure that all applications are closed.
4. Make sure that all Cliquid software archives are closed.
5. Insert the Cliquid software installation DVD into the DVD drive. If an installation DVD is not available, then continue with [Download the Software from the AB SCIEX Web Site on page 35](#) to download the software from the AB SCIEX Web site.

The Cliquid Software Installer dialog opens.

Tip! If the Cliquid Software Installer dialog does not open, navigate to the DVD drive and then double-click **Setup.exe**.

Figure 2-1 Cliquid Software Installer dialog



6. Click **Install**.

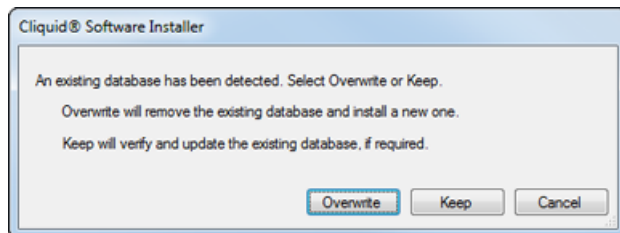
All of the prerequisite software will install with no user intervention.

7. On the Software License Agreement dialog, click **I accept the terms in the license agreement** and then click **Next**.

After installation of the Cliquid software begins, a message dialog opens, indicating that an existing database has been detected. There are two options: overwrite the existing database or keep the existing database.

Note: If Overwrite is selected, then all of the existing data, tests, reports, compounds, library, and so on, will be permanently removed.

Figure 2-2 Existing database detected message



8. Click **Keep**.

All of the data, tests, compounds, and so on, are migrated. During the upgrade, all report templates are automatically copied from their original location to the <Drive>:/Analyst Data/Projects/Cliquid/Templates/ReportTemplates folder, and, if required, converted from .xml files to .docx files.

Query files required by the Cliquid software are automatically copied from their original location to the <Drive>:/Analyst Data/Projects/Cliquid/Templates/Config folder.

After installation is complete, the dialogs shown in [Figure 2-3](#) and [Figure 2-4](#) open.

Figure 2-3 Installation successful dialog

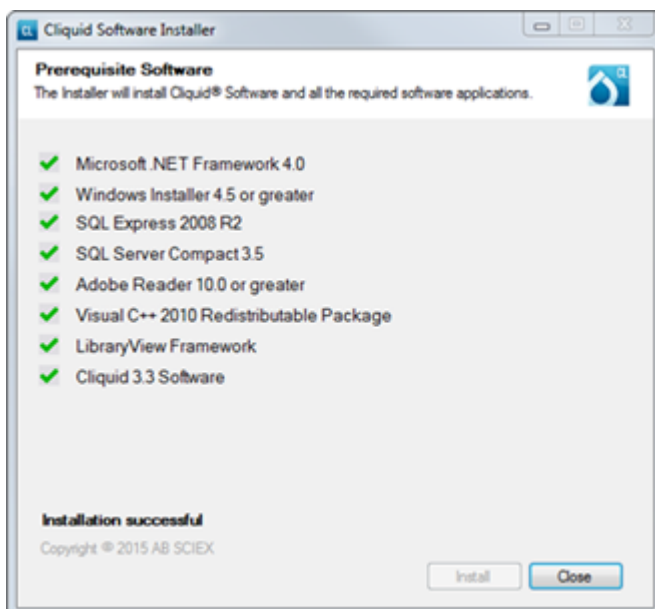
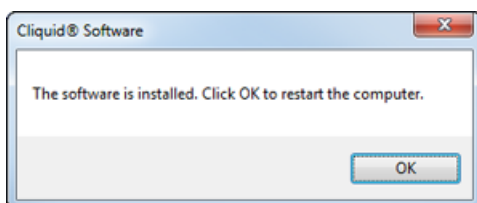


Figure 2-4 Restart the computer prompt



9. Click **OK**.

When upgrading the Cliquid software, a new license file is required. Refer to [Activate the Software on page 11](#).

Activate the Software

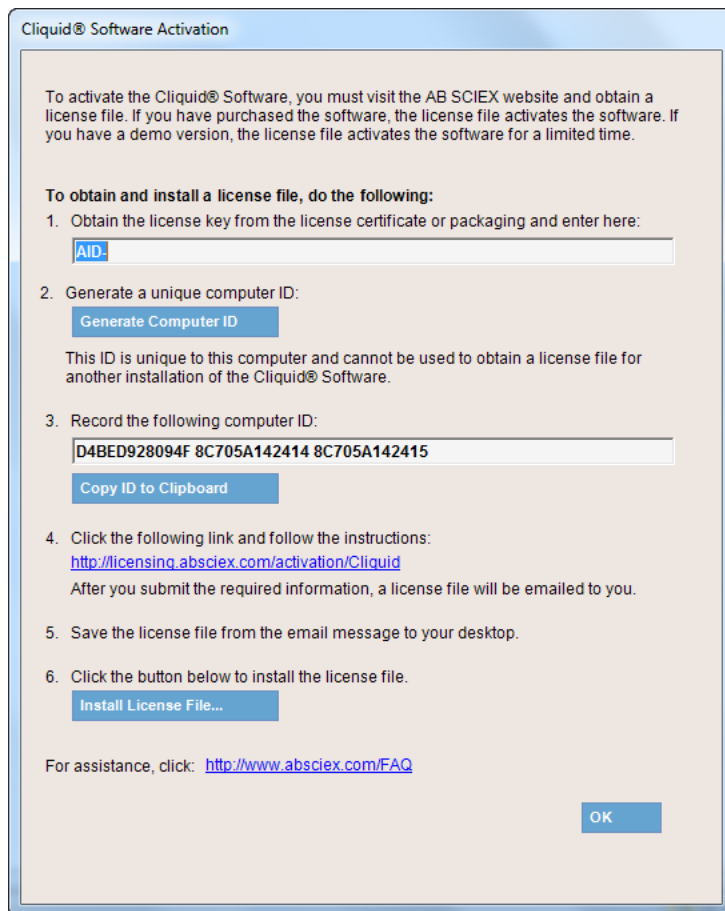
The user must be assigned to the administrator role in the Analyst® software to activate the Cliquid® software.

Installation Procedures

Note: Internet access is required to obtain the activation license.

1. Double-click the Cliquid software desktop icon to open the Cliquid software.
The Cliquid® Software Activation dialog opens.

Figure 2-5 Cliquid Software Activation dialog



2. Type the license key in the appropriate field.
If a license key is not available, contact support@absciex.com.
3. Click **Generate Computer ID**.
This creates a unique identifier for the workstation.
4. Click **Copy ID to Clipboard**.
5. Click the AB SCIEX licensing link and then follow the instructions to obtain the license.

Note: Internet access is required to obtain the license. If the computer does not have Internet access, then make a copy of the generated computer ID. On a computer with Internet access, go to the licensing page of the AB SCIEX Web site and then follow the instructions to obtain a license.

After the required information is submitted, a license file is sent to all e-mail addresses provided.

6. Close the browser window.
7. When the e-mail containing the license file is received, copy the license file to the workstation desktop.
8. Click **Install License File** on the Cliquant[®] Software Activation dialog.
The Select the new license file to be installed dialog opens.
9. Browse to and select the license file and then click **Open**.
Both the Select the new license file to be installed and the Cliquant[®] Software Activation dialogs close and the Cliquant software splash screen opens.
10. Open the Analyst software.
11. Activate the hardware profile.
12. Close the Analyst software.
13. Do one of the following:
 - Continue with [Activate the Amino Acid Feature on page 13](#) to activate the Amino Acid feature.
 - Continue with [Activate the ChemoView Feature on page 14](#) to activate the ChemoView feature.
 - Continue with [Activate the LIMS Communications Feature on page 15](#) to activate the LIMS communications feature.
 - Continue with [Activate the Screening Feature on page 17](#) to activate the Screening feature.
 - Close the Cliquant software and then continue with [Post-Installation Procedures on page 19](#) to complete the upgrade.

Activate the Amino Acid Feature

The user must be assigned to the administrator role in the Analyst[®] software to activate the Amino Acid feature in the Cliquant[®] software. The Amino Acid feature must be activated to run amino acid tests.

Note: Internet access is required to obtain a license for this feature.

1. Click **Features** from the list of tasks on the Home page.
The Features home page opens, showing a list of all available features and their current state.
2. Click **Activate features**.

Installation Procedures

3. Click **Activate** beside Amino Acid.

The Cliquid® Software Activation dialog opens. Refer to [Figure 2-5 on page 12](#).

4. Type the license key in the appropriate field.

If a license key is not available, contact support@absciex.com.

5. Click **Generate Computer ID**.

This creates a unique identifier for the workstation.

6. Click **Copy ID to Clipboard**.

7. Click the AB SCIEX licensing link and then follow the instructions to obtain the license.

Note: Internet access is required to obtain the license. If the computer does not have Internet access, then make a copy of the generated computer ID. On a computer with Internet access, go to the licensing page of the AB SCIEX Web site and then follow the instructions to obtain a license.

After the required information is submitted, a license file is sent to all e-mail addresses provided.

8. Close the browser window.
9. When the e-mail containing the license file is received, copy the license file to the workstation desktop.
10. Click **Install License File** on the Cliquid® Software Activation dialog.

The Select the new license file to be installed dialog opens.

11. Browse to and select the license file and then click **Open**.

Both the Select the new license file to be installed and the Cliquid® Software Activation dialogs close. The Activate button beside Amino Acid is unavailable.

12. Click **Finish**.

The Features home page opens. The status beside Amino Acid is set to Active.

Activate the ChemoView Feature

The user must be assigned to the administrator role in the Analyst® software to activate the ChemoView feature in the Cliquid® software. The ChemoView feature must be activated to run ChemoView™ software tests.

Note: Internet access is required to obtain a license for this feature.

1. Click **Features** from the list of tasks on the Home page.

The Features home page opens, showing a list of all available features and their current state.

2. Click **Activate features**.

3. Click **Activate** beside ChemoView.

The Cliquid® Software Activation dialog opens. Refer to *Figure 2-5 on page 12*.

4. Type the license key in the appropriate field.

If a license key is not available, contact support@absciex.com.

5. Click **Generate Computer ID**.

This creates a unique identifier for the workstation.

6. Click **Copy ID to Clipboard**.

7. Click the AB SCIEX licensing link and then follow the instructions to obtain the license.

Note: Internet access is required to obtain the license. If the computer does not have Internet access, then make a copy of the generated computer ID. On a computer with Internet access, go to the licensing page of the AB SCIEX Web site and then follow the instructions to obtain a license.

After the required information is submitted, a license file is sent to all e-mail addresses provided.

8. Close the browser window.
9. When the e-mail containing the license file is received, copy the license file to the workstation desktop.
10. Click **Install License File** on the Cliquid® Software Activation dialog.

The Select the new license file to be installed dialog opens.

11. Browse to and select the license file and then click **Open**.

Both the Select the new license file to be installed and the Cliquid® Software Activation dialogs close. The Activate button beside ChemoView is unavailable.

12. Click **Finish**.

The Features home page opens. The status beside ChemoView is set to Active.

Activate the LIMS Communications Feature

The LIMS communications feature must be activated in the Cliquid® software before sample information can be imported from and exported to a LIMS/LIS (Laboratory Information Management System/Laboratory Information System). The user must be assigned to the administrator role in the Analyst® software to activate LIMS communications in the Cliquid software.

Note: Internet access is required to obtain a license for this feature.

1. Click **Features** from the list of tasks on the Home page.

The Features home page opens, showing a list of all available features and their current state.

Installation Procedures

2. Click **Activate features**.

3. Click **Activate** beside LIMS communications.

The Cliquid[®] Software Activation dialog opens. Refer to [Figure 2-5 on page 12](#).

4. Type the license key in the appropriate field.

If a license key is not available, contact support@absciex.com.

5. Click **Generate Computer ID**.

This creates a unique identifier for the workstation.

6. Click **Copy ID to Clipboard**.

7. Click the AB SCIEX licensing link and then follow the instructions to obtain the license.

Note: Internet access is required to obtain the license. If the computer does not have Internet access, then make a copy of the generated computer ID. On a computer with Internet access, go to the licensing page of the AB SCIEX Web site and then follow the instructions to obtain a license.

After the required information is submitted, a license file is sent to all e-mail addresses provided.

8. Close the browser window.

9. When the e-mail containing the license file is received, copy the license file to the workstation desktop.

10. Click **Install License File** on the Cliquid[®] Software Activation dialog.

The Select the new license file to be installed dialog opens.

11. Browse to and select the license file and then click **Open**.

Both the Select the new license file to be installed and the Cliquid[®] Software Activation dialogs close. The Activate button beside LIMS communications is unavailable.

12. Click **Finish**.

The Features home page opens. The status beside LIMS communications is set to Active.

Set Up LIMS Communications

The LIMS communications feature must be activated before communications with a LIMS/LIS (Laboratory Information Management System/Laboratory Information System) can be set up. Refer to [Activate the LIMS Communications Feature on page 15](#). The user must be assigned to the administrator role in the Analyst[®] software to set up LIMS communications in the Cliquid[®] software.

1. Click **Features** from the list of tasks on the Home page.

The Features home page opens, showing a list of all available features and their current state.

2. Click **Set up LIMS communications**.

3. Click **On** to enable communications with the LIMS/LIS.

4. Type the name of the LIMS/LIS server in the LIMS server field.

It might be necessary to contact a system administrator for this information.

5. Click **Finish**.

The Features home page opens. The LIMS communications status is On. Users can now import sample information from and export acquired sample information for quantitation, amino acid, and screening tests to the LIMS/LIS.

Activate the Screening Feature

The user must be assigned to the administrator role in the Analyst[®] software to activate the Screening feature in the Cliquid[®] software. The Screening feature must be activated to run screening tests.

Note: Internet access is required to obtain a license for this feature.

1. Click **Features** from the list of tasks on the Home page.

The Features home page opens, showing a list of all available features and their current state.

2. Click **Activate features**.

3. Click **Activate** beside Screening.

The Cliquid[®] Software Activation dialog opens. Refer to *Figure 2-5 on page 12*.

4. Type the license key in the appropriate field.

If a license key is not available, contact support@absciex.com.

5. Click **Generate Computer ID**.

This creates a unique identifier for the workstation.

6. Click **Copy ID to Clipboard**.

7. Click the AB SCIEX licensing link and then follow the instructions to obtain the license.

Note: Internet access is required to obtain the license. If the computer does not have Internet access, then make a copy of the generated computer ID. On a computer with Internet access, go to the licensing page of the AB SCIEX Web site and then follow the instructions to obtain a license.

After the required information is submitted, a license file is sent to all e-mail addresses provided.

8. Close the browser window.

9. When the e-mail containing the license file is received, copy the license file to the workstation desktop.

10. Click **Install License File** on the Cliquid[®] Software Activation dialog.

Installation Procedures

The Select the new license file to be installed dialog opens.

11. Browse to and select the license file and then click **Open**.

Both the Select the new license file to be installed and the Cliiquid® Software Activation dialogs close. The Activate button beside Screening is unavailable.

12. Click **Finish**.

The Features home page opens. The status beside Screening is set to Active.

If Microsoft Office has been upgraded to version 2010 or 2013, then instruct each user assigned to the computer to log on to Windows, open Word, respond to the setup prompt, and then close Word. Each user should also open and then close Excel.

All settings from the original version of the Analyst[®] software should persist, that is, the hardware profile, the security mode setting, the users and their roles, the disabled audit trail, the peak review default options, and the quant method editor settings. If any of these items need to be reset, refer to [Configure the Analyst Software on page 28](#). It is recommended that each user assigned to the computer open and close the Analyst software before working with the updated version of the Cliquid[®] software.

All settings from the original version of the Cliquid software should persist in the Cliquid 3.3 software, that is, all user profiles, library search parameters and isotope correction parameters, if applicable, and autosampler settings. If any of these items need to be reset, refer to the following Cliquid software Help topics, available through **Start > All Programs > AB SCIEX > Cliquid > Cliquid Help**:

- User profiles. Refer to **Setup > User Profile > Create a User Profile**.
- Autosampler settings. Refer to **Setup > Autosampler > Set Up the Autosampler**.
- Library search parameters. Refer to **Setup > Processing Parameters > Library Search > Set the Library Search Parameters**.
- Isotope correction parameters. Refer to **Setup > Processing Parameters > Isotope Correction > Change the Isotopic Contribution Factor and Change the Isotopic Contribution Value**.
- General unknown screening parameters. Refer to **Setup > Processing Parameters > General Unknown and Targeted Unknown Screening > Set the General Unknown Screening and Targeted and Unknown Screening Parameters**.

This section describes some additional tasks that might need to be performed after the upgrade is complete and contains the following information:

- [Set SQL Server \(SQLEXPRESS\) Log On to Local System Account on page 19](#)
- [Upgrade to the Cliquid 3.3 Software on page 9](#)

Set SQL Server (SQLEXPRESS) Log On to Local System Account

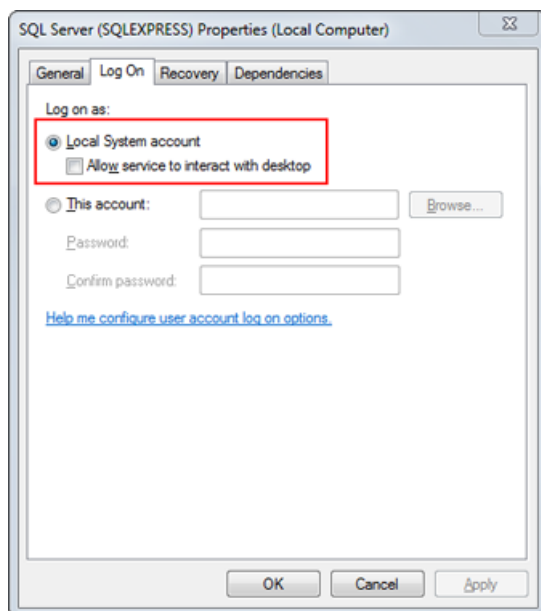
Set the log on for SQL Server (SQLEXPRESS) to Local System account to prevent unauthorized access to data stored in the Cliquid database, using the following steps:

Post-Installation Procedures

Note: Make sure that the Cliquid® software is closed before performing this procedure.

1. Click **Start > Control Panel**.
2. On the Control Panel dialog, double-click **Administrative Tools**.
3. On the Administrative Tools dialog, double-click **Services**.
4. On the Services dialog, right-click **SQL Server (SQLEXPRESS)**, and then select **Properties**.
The SQL Server (SQLEXPRESS) Properties (Local Computer) dialog opens.
5. Click the **Log On** tab.
6. In the Log on as section, make sure that **Local System account** is selected.

Figure 3-1 SQL Server (SQLEXPRESS) Properties (Local Computer) dialog



7. Click **OK**.
8. Close the Services dialog, and then close the Administrative Tools dialog.

Example iMethod™ Applications

All tests, report styles, compounds, and libraries from the existing version of the Cliquid software will be migrated to the new version of the software and will be available after the upgrade is complete.

Several example iMethod™ applications have been prepared for different system configurations, and are included on the Cliquant software installation DVD.

All iMethod applications include the following tests and corresponding method documents:

- Example *Scheduled* MRM™ algorithm (sMRM) quantitation test.
- Example system suitability test.

iMethod applications for QTRAP® systems only (excluding the QTRAP 6500 system) include the following additional tests and corresponding method documents:

- Example general unknown screening test (negative ion, CES).
- Example general unknown screening test (positive ion, CES).
- Example targeted and unknown screening test.
- Example screening test.

All iMethod applications include the following report styles:

- Samples with Chromatograms Report.
- Example System Suitability Test Report.

iMethod applications for QTRAP systems only (excluding the QTRAP 6500 system) include the following additional report styles:

- CES Best Candidate Library Search Report.
- CES Confirmation Library Search - All Peaks Report.
- CES Confirmation Library Search - Matching Hits Report.
- General Unknown Screening All Peaks (CES) Report.
- General Unknown Screening Matching Hits (CES) Report.
- Screening and Quantitation Report.
- Targeted & Unknown Screening - Targets - All Peaks (CES) Report.
- Targeted & Unknown Screening - Targets - Matching Hits (CES) Report.
- Targeted & Unknown Screening - Unknowns - All Peaks (CES) Report.
- Targeted & Unknown Screening - Unknowns - Matching Hits (CES) Report.

All iMethod applications include the following compounds:

- Ametryn_E2.0
- Atrazine_E2.0
- Prometon_E2.0
- Prometryn_E2.0

- Propazine_E2.0
- Simazine_E2.0
- Terbutryn_E2.0

Example Library Application

An example Library application, containing a spectrum for each of the seven triazine compounds included in the example iMethod applications, is included on the Cliquid software installation DVD.

Example Quant Report Style with Record Modified Application

An example report style containing an additional field (Record Modified) that is used to indicate that changes have been made to the Results Table is included in this application.

(Optional) Install an Example iMethod Application

Note: These files provide a starting point for deployment of a new test and they should be customized to meet the specific requirements of the laboratory. After the application is installed, users can run the tests using the Cliquid software and obtain results quickly.

1. Log on to the Cliquid software as a user with administrator privileges.
2. Click **Sharing** from the list of tasks on the Home page.
3. Click **Unpack a .clq package**.
4. Browse to the iMethod Applications folder on the installation DVD.
5. Select the appropriate iMethod application (.clq file) from the list of available applications

Note: The iMethod applications are identified by the MS and LC instrument type associated with the application. Select the application that most closely matches the LC/MS/MS system configuration being used. The mass spectrometer must match the instrument model being used. For example, if the configuration is a QTRAP[®] 6500 MS/MS System with an Agilent 1260 LC System, select the application with "QTRAP6500+Agilent1260" in the file name. The example library file is not configuration-specific. It can be unpacked to any system configuration.

After the application is selected, a contents summary page opens in the Cliquant software interface. If the LC/MS/MS system configuration of the application exactly matches the hardware profile, the word "Compatible" is shown in green lettering.

If the hardware profiles do not match, then the word "Incompatible" is shown in red lettering. This indicates a mismatch between the hardware configuration used in the development of the test and the hardware configuration.

- If the mismatch is because of a different mass spectrometer, then neither the tests nor the MRM catalogue entries (compounds) will be unpacked.
- If the mismatch is caused by a different LC configuration, then the test can be unpacked. However, the acquisition and quantitation method files must be updated and tested in the Analyst[®] software prior to use in the Cliquant software. In most cases, these modifications will involve adding a missing LC component to the method, entering the appropriate method parameters from the method document included with this test, and updating retention times.

6. Click **Next**.

A screen where components to be unpacked can be selected opens. By default, all components are selected.

7. If there are items that are not required, then clear the corresponding check box.

8. Click **Finish**.

A confirmation message is shown after the unpack is completed.

9. Click **Done** to return to the Sharing page.

The unpacked tests are now available to be run using the Cliquant software.

10. Repeat step 3 through step 9 for each application to be unpacked.

(Optional) Save Acquisition Methods for Shimadzu Prominence LC Systems

If the LC/MS/MS system configuration includes a Shimadzu Prominence LC system, any unpacked acquisition methods must be opened in the Analyst[®] software and then saved.

1. Close the Cliquant software.
2. Open the Analyst software.
3. Make sure that the Cliquant project is shown in the Project field.

Tip! If the Project field is not visible, click **Tools > Restore Default Toolbars**.

4. Click **File > Open**.

Post-Installation Procedures

5. In the Files of type list on the Open dialog, click **Acquisition Method (.dam)**.
A list of acquisition methods is shown.
6. Select the first unpacked acquisition method, and then click **OK**.
7. When the acquisition method opens, click **File > Save As**, and then click the name of the open acquisition method from the list of methods.
The name of the selected acquisition method is shown in the File name field.
8. Click **Save** and then click **Yes** to replace the existing file.
9. Repeat step 4 through step 8 until all acquisition methods have been saved.
10. Close the Analyst software.

(Optional) Update Instrument Settings in Unpacked Acquisition Methods for the QTRAP Series of Instruments

If tests containing acquisition methods with linear ion trap experiments (including example tests and tests purchased from AB SCIEX for any QTRAP[®] system) are unpacked, and the acquisition methods will be used in the Analyst[®] software before the tests are used in the Cliquid software, then the acquisition methods must be updated. If the acquisition methods are used in the Analyst software without updating them, then compromised instrument performance might be observed as the methods will not contain the instrument settings specific for the system. If the tests will be submitted through the Cliquid software first, then this procedure does not need to be performed.

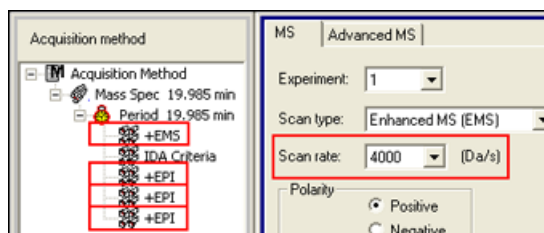
1. Make sure that the Cliquid software is closed.
2. Make sure that the Analyst software is open.
3. Make sure that the Cliquid project is shown in the Project field.

Tip! If the Project field is not visible, click **Tools > Restore Default Toolbars**.

4. Click **File > Open**.
5. In the Files of type list on the Open dialog, click **Acquisition Method (.dam)**.
A list of acquisition methods is shown.
6. Select the first unpacked acquisition method, and then click **OK**.
7. For each linear ion trap experiment, for example, EMS or EPI, listed in the Acquisition method pane, change the Scan rate in the right pane to any other available value and then change it back to the initial setting. Refer to [Figure 3-2](#).

Note: Changing the scan rate updates the instrument settings for the acquisition method for the system.

Figure 3-2 Acquisition method window



8. After the scan rate for all linear ion trap experiments in the method have been updated, click **Save** and then click **Yes** to replace the existing file.
9. Repeat step 4 through step 8 until all acquisition methods have been updated.
10. Close the Analyst software.

Library Search Parameters

The following processing parameters are included in the MultipleCandidateLibrarySearch.config file:

- ProcessingParameter.LibrarySearch.AlwaysTriggerLibSearch=false
- ProcessingParameter.LibrarySearch.CheckSpaceCharge=true

The Precursor Mass Tolerance (PrecursorMZTolerance) is set at 0.4 Da in both the MultipleCandidateLibrarySearch.config file and the ConfirmationLibrarySearch.config file.

To make changes to these parameters or any other parameters that are not available through the Cliquid software interface, update the information in the appropriate file in the C:/Program Files/AB SCIEX/cliquid/Reporter folder.

This section describes some issues that might be encountered while installing the prerequisite software and the Cliquid® software and suggests possible causes and potential solutions.

Issue	Possible Cause/Solution
A non-supported version of SQLExpress is installed and the Cliquid software installation cannot proceed.	SQL Express 2008 R2 is the only version of the Microsoft SQLExpress software supported by the Cliquid software. If another version of SQLExpress exists on the computer where the Cliquid software is being installed, the installer will stop and notify the user that an unsupported version of SQL has been detected. The unsupported version of SQLExpress must be removed before installation can continue. Refer to <i>Unsupported Version of SQL Express</i> in the <i>Release Notes</i> for removal instructions.
In some cases, the WorkList Service (WorkListSvc) does not start automatically after the installation of the Cliquid software is complete and the user receives an error when starting the Cliquid software.	The following procedure resolves this issue: <ol style="list-style-type: none">1. Click Start and then type services.msc in the search field.2. Click services.msc in the search results dialog.3. In the Name column on the Services dialog, right-click WorkListSvc, and then click Start.4. After the Service Control dialog closes, close the Services dialog and the error message.5. Start the Cliquid software again.

Issue	Possible Cause/Solution
<p>In some cases, the LibraryViewServiceHost does not start automatically after the installation of the Cliquid software is complete and the user receives an error when starting the Cliquid software.</p>	<p>The following procedure resolves this issue:</p> <ol style="list-style-type: none"> 1. Click Start and then type services.msc in the search field. 2. Click services.msc in the search results dialog. 3. In the Name column on the Services dialog, right-click LibraryViewServiceHost, and then click Start. 4. After the Service Control dialog closes, close the Services dialog and the error message. 5. Start the Cliquid software again.
<p>The Cliquid software might not function if the acquisition workstation has a data encryption application installed.</p>	<p>The application might encrypt files that the Cliquid software requires to operate. Installation should be completed on a computer that does not have a data encryption application installed.</p>
<p>The performance of the Cliquid software might be degraded on a system with an anti-virus application installed.</p>	<p>Anti-virus software scans each file for potential issues. This can impact reporting performance when numerous per sample reports are being generated. To optimize performance, the Cliquid software should be installed on a computer that does not have an anti-virus application installed. If anti-virus software is a requirement of the IT department, we recommend that automatic virus scans be disabled and a scan started manually when the system will be idle for an extended period of time.</p>

Configure the Analyst Software

A

1. Open the Analyst[®] software.
2. Create and activate the appropriate hardware profile in the Analyst software. For more information, refer to the *Getting Started Guide* provided with the Analyst software.

Note: For MS instruments with an integrated diverter valve, make sure that it is not selected for inclusion in the hardware configuration for the system suitability test.

3. Configure the Analyst software, using the steps outlined in the following procedures:
 - [Set the Security Mode to Mixed Mode on page 28](#)
 - [Add all Required Users on page 28](#)
 - [Assign Users to Roles on page 29](#)
 - [Modify Peak Review Default Options on page 31](#)
 - [Modify the Quant Method Editor Settings on page 32](#)
 - [Disable the Analyst Software Audit Trail Functionality on page 33](#)

Set the Security Mode to Mixed Mode

1. On the navigation bar under **Configure**, double-click **Security Configuration**.
2. On the Security Configuration dialog, click **More**.
3. Click the **Security** tab.
4. In the **Security Mode** section, click **Mixed Mode**.
5. Click **OK**.
6. Click **OK** to close the SecurityConfig message dialog.

Add all Required Users

1. On the navigation bar under **Configure**, double-click **Security Configuration**.
2. On the Security Configuration dialog, click the **People** tab.

3. Click **New Person**.

The Select Users or Groups dialog opens.

4. Type the user name in the field provided.

Note: User names must match the Windows accounts on the workstation.

Tip! Multiple user names must be separated by a semicolon.

5. Click **Check Names** to verify the names entered.

6. Click **OK**.

The Select Users or Groups dialog closes. The names of all users are shown in the left pane of the Security Configuration dialog.

7. Click **OK** to close the SecurityConfig dialog.
8. Click **OK** to close the SecurityConfig message dialog.

Assign Users to Roles

Technicians and administrators are the only types of users defined in the Cliquid software. When the Analyst software is installed, the administrator role is automatically created. When the software is installed, the technician role is automatically created.

When new users are added to the computer they must be assigned to the Local Windows Administrators group, otherwise they might have difficulty working with the Cliquid software data files. When new users are added to the Analyst software, they must be assigned to one of the Cliquid software roles, the technician or the administrator. Depending on the number of users to be assigned to a role in the Analyst software, each user can be assigned to a role manually, or the Assign Role utility can be used to assign multiple users to a role at one time. Refer to [Assign Multiple Users to Roles using the Assign Role Utility on page 30](#).

The Cliquid software does not support user groups. Only an individual can be assigned to the Analyst software administrator or technician role. In addition, the Cliquid software does not support multiple roles for one user. Only the first assigned role is recognized by the software and the user inherits the rights of that user role. All other roles are disregarded.

Assign Single Users to Roles

After a new user has been added to the computer with Local Windows Administrator privileges, they must be assigned to a role in the Analyst software.

1. Open the Analyst software as a user with administrator privileges.
2. On the navigation bar under **Configure**, double-click **Security Configuration**.

Configure the Analyst Software

3. On the Security Configuration dialog, click the **People** tab.
4. In the left pane, select the name of the person to assign a role to.
5. In the **Available Roles** section, click the required role, for example, administrator.
6. Click **Add**.
7. Repeat step 4 through step 6 for each user.
8. After all users have been assigned to a role, click **OK**.
9. Click **OK** to close the SecurityConfig message dialog.
10. Close the Analyst software.

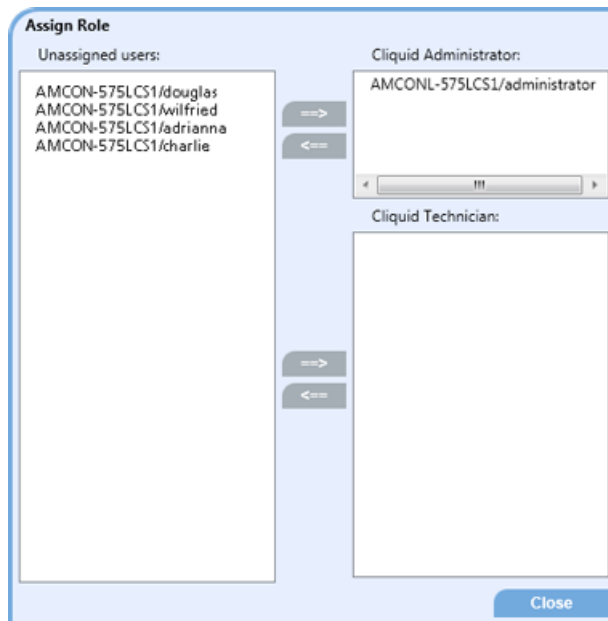
Assign Multiple Users to Roles using the Assign Role Utility

After new users have been added to the computer with Local Windows Administrator privileges, they must be assigned to a role in the Analyst software.

1. Browse to the Utility folder on the Cliquid software installation DVD.
2. Double-click **AssignRole.exe**.

The Assign Role dialog opens.

Figure A-1 Assign Role dialog



The names of all new users and users not assigned to the administrator or technician role in the Analyst software are shown in the Unassigned users list.

Note: If the user is assigned to an Analyst software role, for example, supervisor, operator, and so on, the user cannot be assigned to the administrator or technician role using this utility. To use this utility, remove the non-Cliquid software role for the user, using the Analyst software.

3. Select all of the users to be assigned to the administrator role, and then to the left of the **Cliquid Administrator** list, click ==>.

The names of the selected users are shown in the Cliquid Administrator list and are removed from the Unassigned users list.

4. Select all of the users to be assigned to the Technician role, and then to the left of the **Cliquid Technician** list, click ==>.

The names of the selected users are shown in the Cliquid Technician list and are removed from the Unassigned users list.

5. After all of the users are assigned to their appropriate role, click **Close**.

Modify Peak Review Default Options

To view a complete peak review based on the largest peak, the peak review default options in the Analyst software must be modified for each Cliquid[®] software user. The administrator should complete this procedure for each new user added to the Cliquid software.

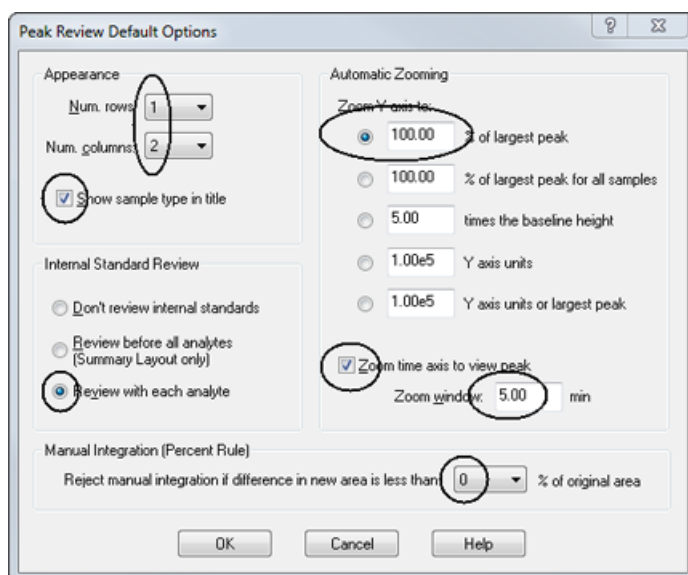
1. Instruct the user to log on to the Analyst software.
2. Make sure that the Default project is shown in the Project field.

Tip! If the Project field is not visible, click **Tools > Restore Default Toolbars**.

3. On the navigation bar, click **Quantitate**.
4. Click **Tools > Settings > Quantitation Peak Review Settings**.
The Peak Review Default Options dialog opens.
5. Modify the settings, as required, to match the values shown in [Figure A-2](#).

Configure the Analyst Software

Figure A-2 Peak Review Default Options dialog



6. After the settings have been modified, click **OK**.

The Peak Review Default Options dialog closes. All other projects automatically inherit these peak review settings.

7. Repeat this procedure for each user.

Modify the Quant Method Editor Settings

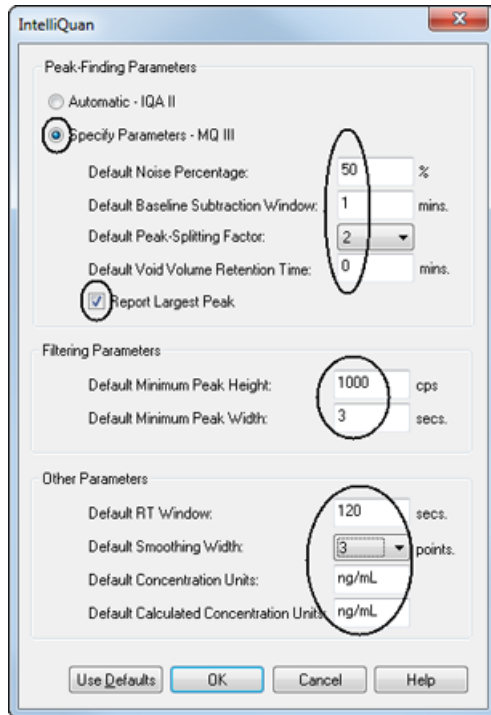
The Quant Editor Method settings must also be changed in the Analyst software, using the administrator user name and password.

1. Make sure that the Default project is shown in the Project field.

Tip! If the Project field is not visible, click **Tools > Quantitation Integration Algorithm** and make sure that **IntelliQuan** is selected.

2. On the navigation bar, click **Quantitate**.
3. Click **Tools > Settings > Quantitation Integration Algorithm > Quant Method Editor Settings**.
4. On the IntelliQuan dialog, change the settings, as required, to match the values shown in [Figure A-3](#).

Figure A-3 IntelliQuan dialog



5. Click **OK**.

The IntelliQuan dialog closes. All other projects automatically inherit these settings


Disable the Analyst Software Audit Trail Functionality

The Quant Editor Method settings must also be changed in the Analyst software, using the administrator user name and password.

1. Click **View > Audit Trail Manager**.

The Audit Trail Data pane opens.

2. Expand the Audit Trail Data folder (left side of the pane).
3. Expand the Projects folder.
4. Select **Cliquid** from the list of Projects.
5. Click the **Settings** tab (right side of the pane).

A checkmark  is visible beside the Default Audit Map setting.

Configure the Analyst Software

6. Click the **No Audit Map** setting and then click **Apply**.
The checkmark moves from the Default Audit Map setting to the No Audit Map setting.
7. Select **Default** from the list of Projects.
A checkmark is visible beside the Default Audit Map setting.
8. Click the **No Audit Map** setting and then click **Apply**.
The checkmark moves from the Default Audit Map setting to the No Audit Map setting.
9. Select **Maintenance** from the list of Projects.
A checkmark is visible beside the Default Audit Map setting.
10. Click the **No Audit Map** setting and then click **Apply**.
The checkmark moves from the Default Audit Map setting to the No Audit Map setting.
11. Select **System Suitability Test** from the list of Projects.
A checkmark is visible beside the Default Audit Map setting.
12. Click the **No Audit Map** setting and then click **Apply**.
The checkmark moves from the Default Audit Map setting to the No Audit Map setting.
13. Close the Audit Trail Data pane.
14. Close the Analyst software.

Download the Software from the AB SCIEX Web Site

B

1. Download the Cliquant[®] software from the AB SCIEX Web site.

Note: To prevent potential installation issues, it is recommended that the file is saved to a location other than the computer desktop.

2. After the download is complete, right-click the **Cliquant_3.3.zip** file and extract the files.

Note: By default, the files are extracted to the Cliquant 3.3 folder in the same location as the Cliquant_3.3.zip file was saved. However, the user can choose the location.

3. After the extraction completes, browse the Cliquant 3.3 folder and then double-click the **setup.exe** file.
4. Continue with step 6 of [Install the Cliquant Software on page 9](#).

Revision History

Revision	Reason for Change	Date
A	First release.	February 2015