

Software Installation Guide

PA 800 Plus Software



This document is provided to customers who have purchased SCIEX equipment to use in the operation of such SCIEX equipment. This document is copyright protected and any reproduction of this document or any part of this document is strictly prohibited, except as SCIEX may authorize in writing.

Software that may be described in this document is furnished under a license agreement. It is against the law to copy, modify, or distribute the software on any medium, except as specifically allowed in the license agreement. Furthermore, the license agreement may prohibit the software from being disassembled, reverse engineered, or decompiled for any purpose. Warranties are as stated therein.

Portions of this document may make reference to other manufacturers and/or their products, which may contain parts whose names are registered as trademarks and/or function as trademarks of their respective owners. Any such use is intended only to designate such products as those manufacturers' products and does not imply any right and/or license to use or permit others to use such manufacturers' and/or their product names as trademarks.

SCIEX warranties are limited to those express warranties provided at the time of sale or license of its products and are the sole and exclusive representations, warranties, and obligations of SCIEX. SCIEX makes no other warranty of any kind whatsoever, expressed or implied, including without limitation, warranties of merchantability or fitness for a particular purpose, whether arising from a statute or otherwise in law or from a course of dealing or usage of trade, all of which are expressly disclaimed, and assumes no responsibility or contingent liability, including indirect or consequential damages, for any use by the purchaser or for any adverse circumstances arising therefrom.

(GEN-IDV-09-10816-E)

For Research Use Only. Not for use in Diagnostic Procedures.

Trademarks and/or registered trademarks mentioned herein, including associated logos, are the property of AB Sciex Pte. Ltd., or their respective owners, in the United States and/or certain other countries (see sciex.com/trademarks).

AB Sciex™ is being used under license.

© 2026 DH Tech. Dev. Pte. Ltd.



Contents

1 Introduction	4
2 Requirements	5
Required Equipment	5
Operating System Requirements	5
Computer Requirements	5
Validated Controller Configuration	5
3 Installation Instructions	7
Download the Required Software and Files	7
Region Settings	7
Install the National Instruments Driver	8
Install Other Required Software	10
Install the 32 Karat Software	11
Install the PA 800 Plus Software	18
Install the GU Value Software	22
Configure the Sciex PDF Writer Software	23
Replace Earlier Versions of the Project Files	24
Do a Software Qualification Test	24
Contact Us	26
Addresses	26
Customer Training	26
Online Learning Center	26
Buy Supplies and Reagents	26
SCIEX Support	26
Cybersecurity	27
Documentation	27

Introduction

1

This guide supplies information about, and procedures for, installation of the PA 800 Plus software on a computer that will be used for data processing.

For information about new software features, enhancements, and known issues, refer to the document: *Release Notes*, which is included with the software package.

Requirements

2

Required Equipment

A USB license key for the PA 800 Plus software is required.

Operating System Requirements

This version of the software is compatible with the Windows 10, 64-bit operating system and Windows 11, 64-bit operating system.

For computer requirements, refer to the section: [Computer Requirements](#).

Computer Requirements

The computer must meet the minimum requirements for the Windows 10, 64-bit operating system or Windows 11, 64-bit operating system.

Validated Controller Configuration

Note: Specifications are subject to change without notice.

Note: SCIEX fully validates and supports the controllers supplied with the system. Only limited support is available for customer-supplied computers.

Table 2-1 Validated Controller Configuration

Item	Details
Operating system	Windows 10 Enterprise LTSC 21H2, language set to English (United States)
CPU	Intel Core Ultra 5 processor 235, 24M cache, to a maximum of 5 GHz
Random access memory (RAM)	16 GB, DDR5, to a maximum of 5,600 MT/s, non-ECC
Hard drive	512 GB SSD
Optical drive	DVD-RW drive
Serial ports	2
Ethernet ports	2
USB ports	2

Requirements

Table 2-1 Validated Controller Configuration (continued)

Item	Details
Monitor	24-inch wide-screen monitor with 1920 × 1080 resolution

Installation Instructions

3

Note: To download the software, Internet access is required. To decrease the time that is required for the installation, we recommend that all of the required software and materials be downloaded before the scheduled installation.

Note: Before the software installation is started, in the Windows search bar, type `core isolation`, and then make sure that **Memory integrity** is **Off**.

Download the Required Software and Files

Tip! To prevent installation issues, save the files to a location other than the computer desktop. Before the installation is started, disconnect all of the external USB storage devices.

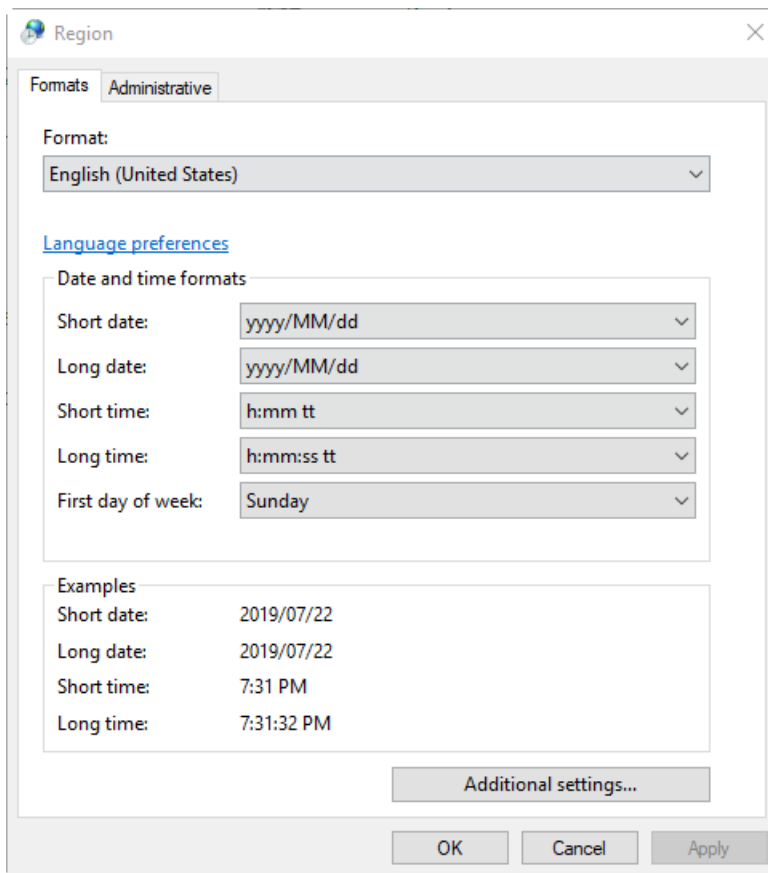
1. Go to sciex.com/software-downloads. In the **More Software Downloads** section, click **PA 800 Plus Software**, and then click **PA 800 Plus Software 10.3.20**.
2. In the **More Software Downloads** section, click **PA 800 Plus Resources**, and then click **PA 800 Plus Project Files 10.3.20**.

Region Settings

Note: If the **Format** field is set to a different value, then file information or audit trail information might be shown incorrectly.

1. Open Control Panel.
2. Click **Region**.

Figure 3-1 Region Dialog



3. Make sure that the **Format** field is set to **English (United States)**, **French (France)**, or **German (Germany)**.
4. Click **Apply**.
5. Click **OK**.

Install the National Instruments Driver

The PA 800 Plus software requires that a National Instruments driver be installed. Different versions are required for the Windows 10 and Windows 11 operating systems.

1. Browse to the folder where the installation files were saved, and then click the applicable folder:
 - If the Windows 10 operating system is in use, then click the `NI-488.2 19.0 Driver` folder.
 - If the Windows 11 operating system is in use, then click the `NI-488.2 25.0 Driver` folder.

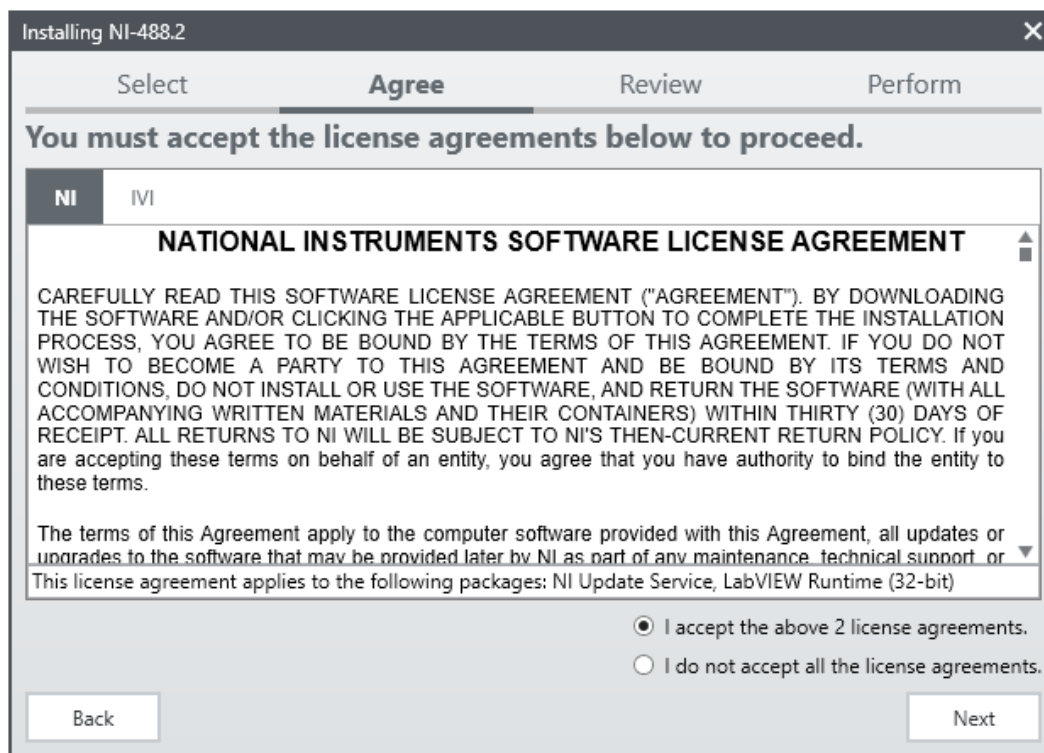
2. Double-click `Install.exe`.
The Open File - Security Warning dialog opens.

Note: If the Windows 11 operating system is in use, then some of the figures that follow might be different.

3. Click **Run**.

Note: If the Windows 11 operating system is in use, then accept all of the default settings.

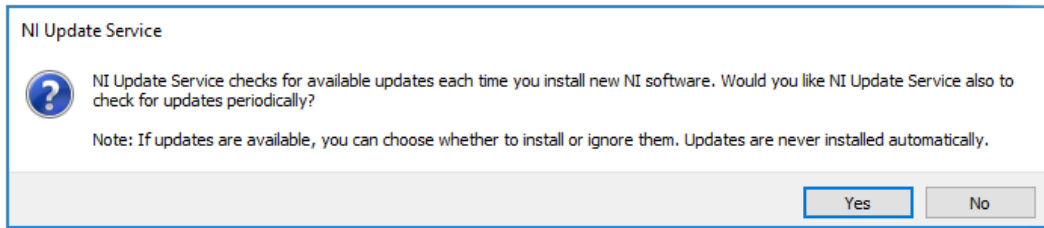
Figure 3-2 NI Package Manager Installation Wizard



4. Click **I accept the above 2 license agreements**, and then click **Next** until the NI Package Manager page opens.
5. On the next page, click **I accept the above 2 license agreements**, and then click **Next**.
The installation might require a few minutes.
When the installation is completed, a message about the NI Update Service is shown.

Installation Instructions

Figure 3-3 NI Update Service Message



6. Click **No**.
7. If a message about the NI Customer Experience Improvement Program is shown, then click **No, I do not want to participate in the NI Customer Experience Improvement Program**, and then click **OK**.
8. To start the computer again, click **Reboot Now**.
9. Log on to the computer.

Note: If a dialog for software registration opens, then click **Cancel** to close it.

Install Other Required Software

The .NET Framework 3.5 and .NET Framework 4.5 must be installed.

Note: To install the .NET Framework 3.5, access to the Internet is required. If the computer does not have access to the Internet, then contact a local IT representative to identify if the .NET Framework 3.5 is installed or how to install it, if required.

The reports that are created with the 32 Karat software are PDF files. To read them, a PDF reader is required.

1. To install the .NET Framework 3.5, browse to the folder where the installation files were saved, click the **.NET 3.5** folder, double-click the `dotnetfx35sp1.exe` file, and then obey the on-screen instructions.
If the .NET Framework 3.5 is not installed, then the installer connects to the Internet to download and install it.
2. To install the .NET Framework 4.5, browse to the folder where the installation files were saved, click the **.NET 4.5** folder, double-click the `NDP451-KB2858728-x86-x64-AllOS-ENU.exe` file, and then obey the on-screen instructions.
3. Browse to the folder where the installation files were saved, click the **SciexPDF** folder, double-click the `SciexPDF.exe` file, and then obey the on-screen instructions.

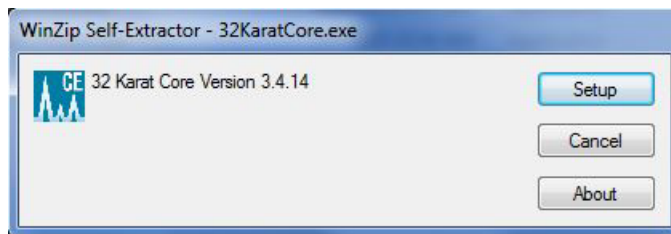
4. To install Adobe Acrobat Reader, browse to the folder where the installation files were saved, click the Adobe PDF Reader DC folder, double-click the AcroRdrDC2500120844_en_US.exe file, and then obey the on-screen instructions.

Install the 32 Karat Software

Four installers are included in the self-extracting installer. All four software components must be installed on the computer.

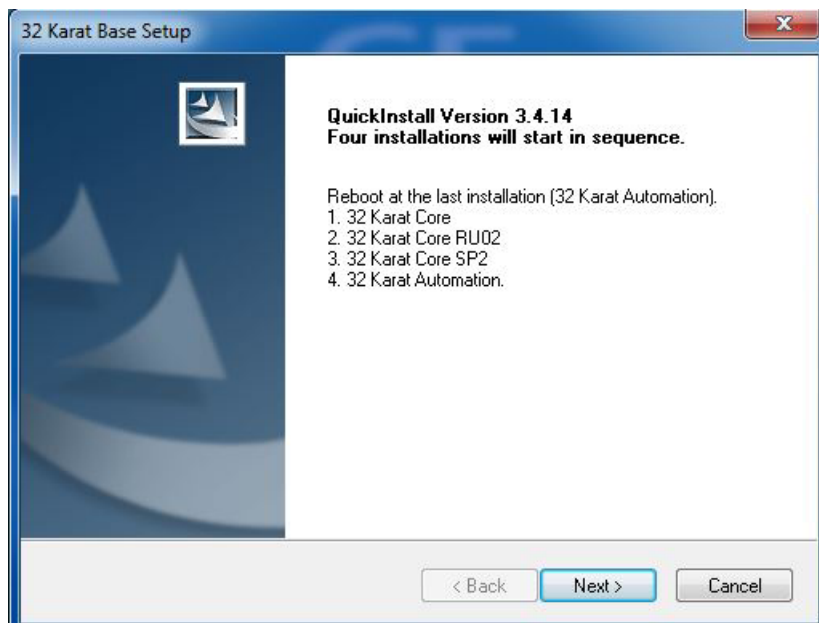
1. Double-click **32KaratCore.exe**.

Figure 3-4 WinZip Self-Extractor Dialog



2. Click **Setup**.
The 32 Karat Base Setup wizard opens.

Figure 3-5 32 Karat Base Setup



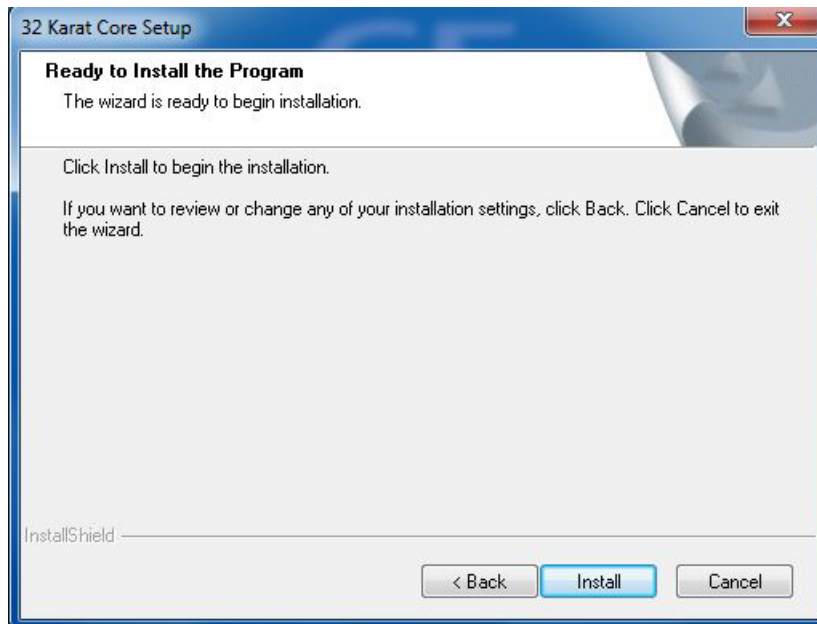
3. Click **Next** three times, accepting the defaults, until the Ready to Install the Program page is shown.

Installation Instructions

- When prompted for the destination folder for the software, accept the default:
C:\32Karat.
- When prompted for the Enterprise path, accept the default:
C:\32 Karat\Enterprise. Click **Yes** to create the folder.

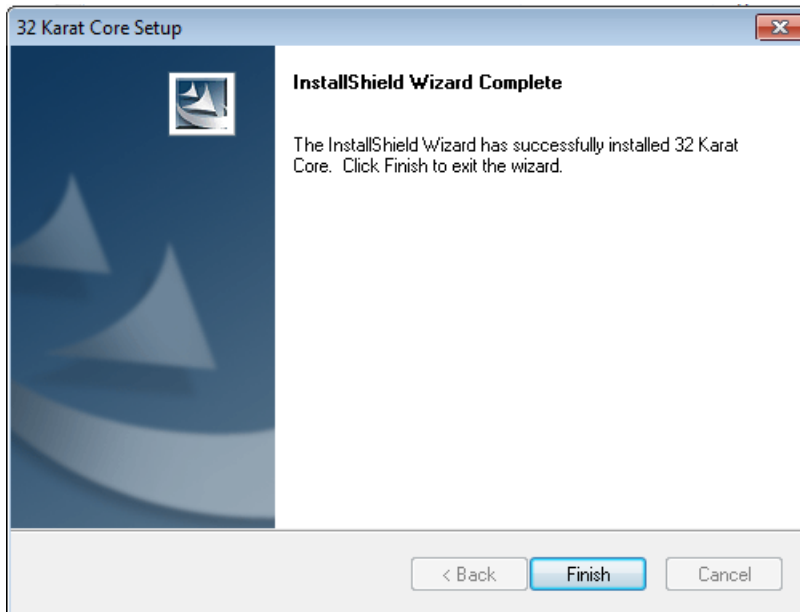
Note: Do not change the destination folder for the software. The software will not work unless it is installed in the C:\32Karat folder.

Figure 3-6 32 Karat Core Setup: Ready to Install the Program



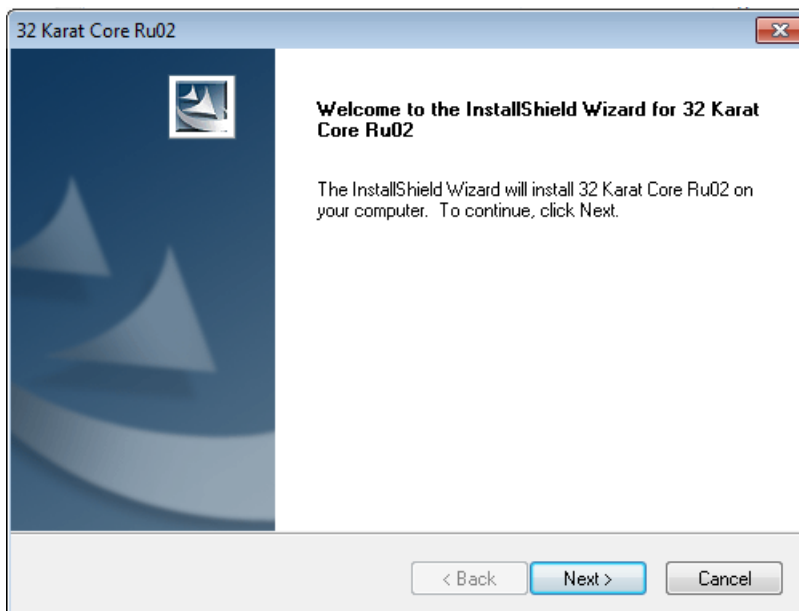
4. Click **Install** and then wait until the 32 Karat wizard shows a message that the installation is complete.

Figure 3-7 32 Karat Core Setup: InstallShield Wizard Complete



5. Click **Finish**.
The 32 Karat Core Ru02 wizard opens.

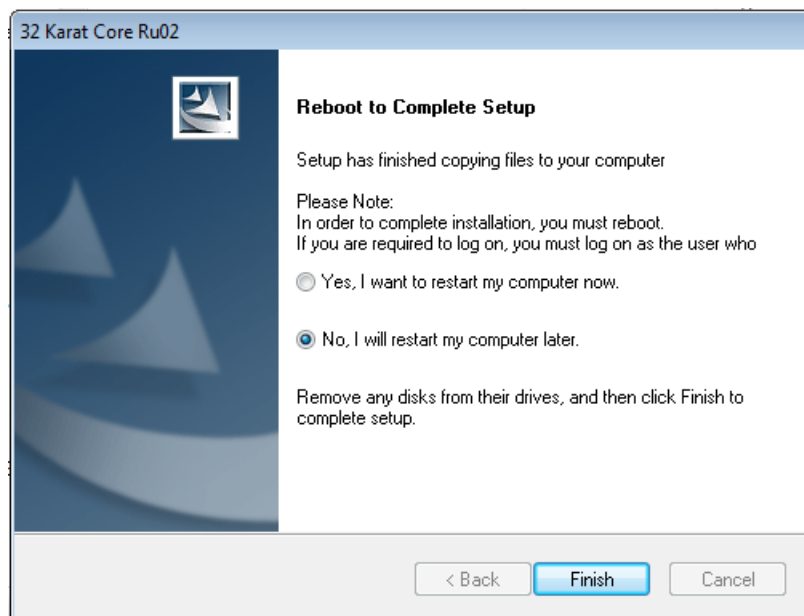
Figure 3-8 32 Karat Core Ru02



6. Click **Next** and then accept the defaults until the Reboot to Complete Setup page is shown.

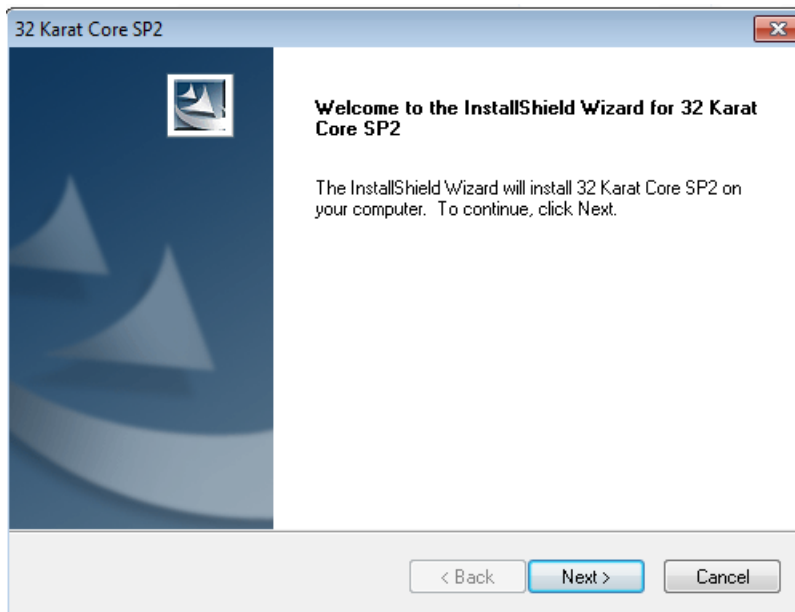
CAUTION: Potential Data Loss. Do not restart the computer until instructed to do so. If the computer is restarted before all of the components have been installed, then the software installation will fail.

Figure 3-9 32 Karat Core Ru02: Reboot to Complete Setup



7. Click **No, I will restart my computer later.** and then click **Finish**. The 32 Karat Core SP2 wizard opens.

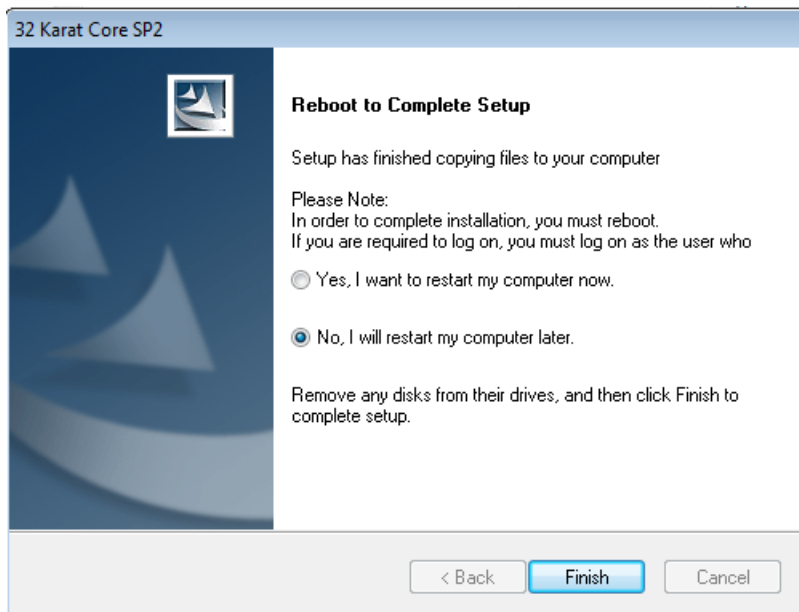
Figure 3-10 32 Karat Core SP2



8. Click **Next** and then accept the defaults until the Reboot to Complete Setup page is shown.

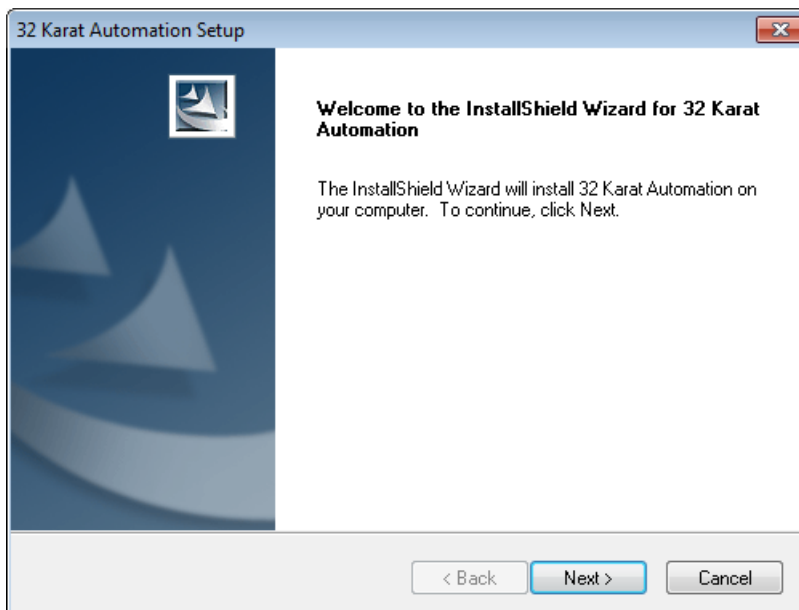
CAUTION: Potential Data Loss. Do not restart the computer until instructed to do so. If the computer is restarted before all of the components have been installed, then the software installation will fail.

Figure 3-11 32 Karat Core SP2: Reboot to Complete Setup



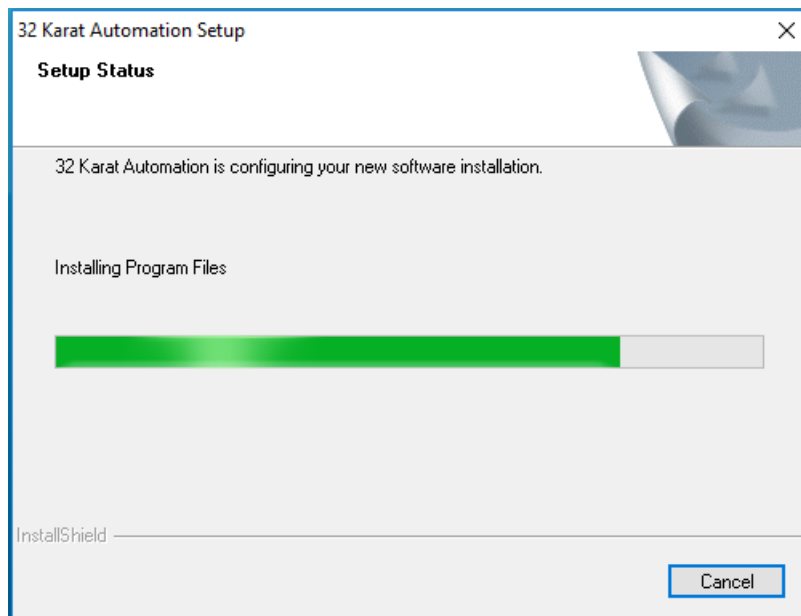
9. Click **No, I will restart my computer later** and then click **Finish**. The 32 Karat Automation Setup wizard opens.

Figure 3-12 32 Karat Automation Setup



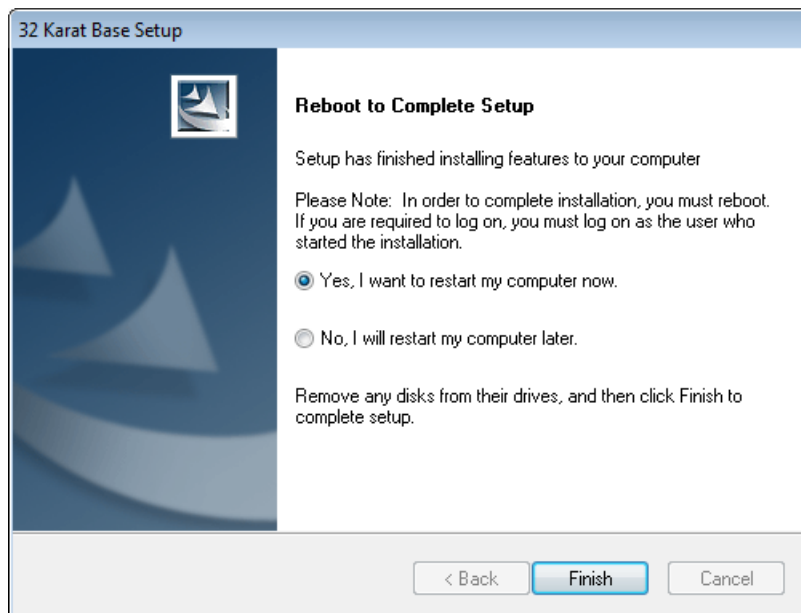
10. Click **Next** to begin the installation.

Figure 3-13 32 Karat Core Automation Setup



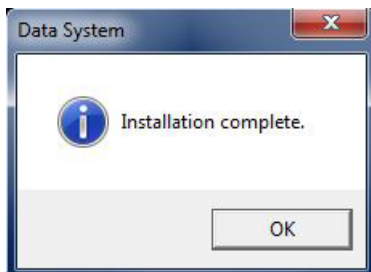
When the installation is complete, the installer prompts to restart the computer.

Figure 3-14 32 Karat Base Setup: Reboot to Complete Setup



11. Click **Yes, I want to restart my computer now** and then click **Finish**. The computer restarts.
12. After the computer restarts, click **OK** in the dialog that is shown.

Figure 3-15 Installation Complete

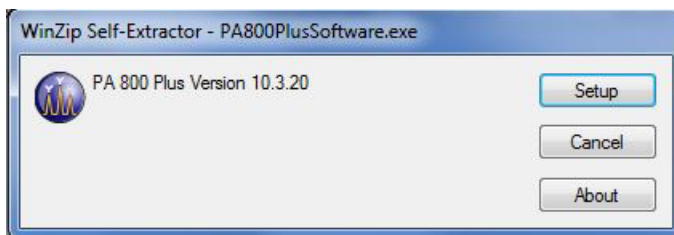


Install the PA 800 Plus Software

The USB license key is required for the installation, but do not install it until the prompt is shown in step 5.

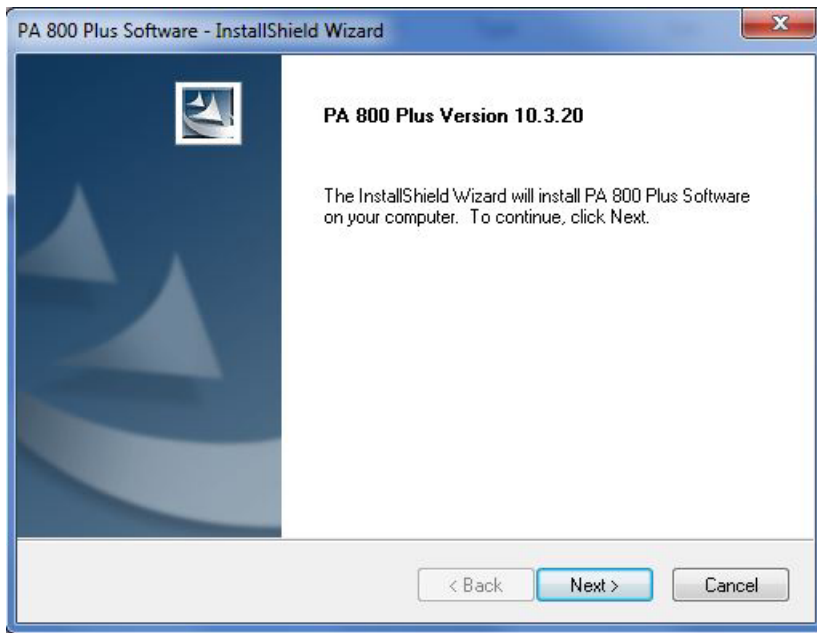
1. Double-click **PA800plusSoftware.exe**.

Figure 3-16 WinZip Self-Extractor Dialog



2. Click **Setup**.

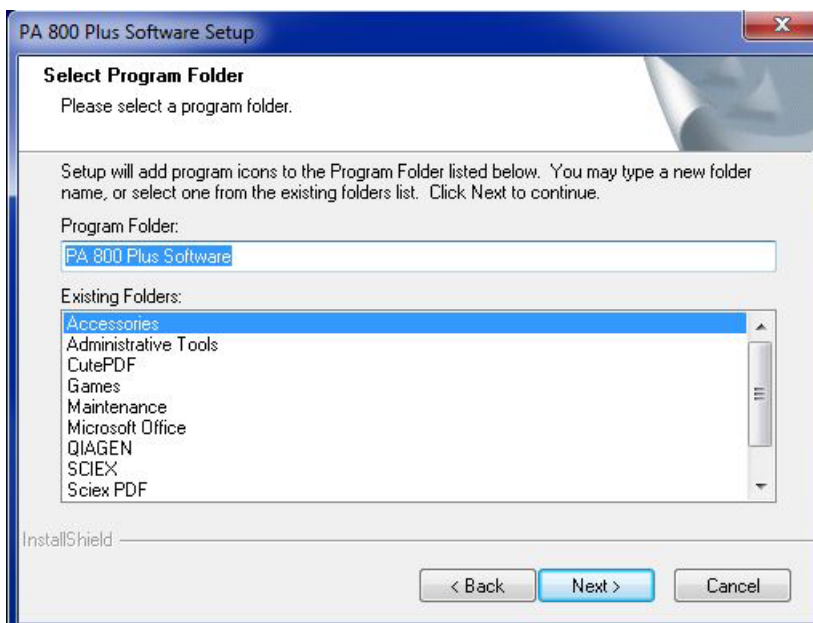
Figure 3-17 PA 800 plus Software InstallShield Wizard



3. Click **Next**, and then accept the default values.

Note: Do not change the destination folder for the software. The software will not operate unless it is installed in the `C:\32Karat` folder.

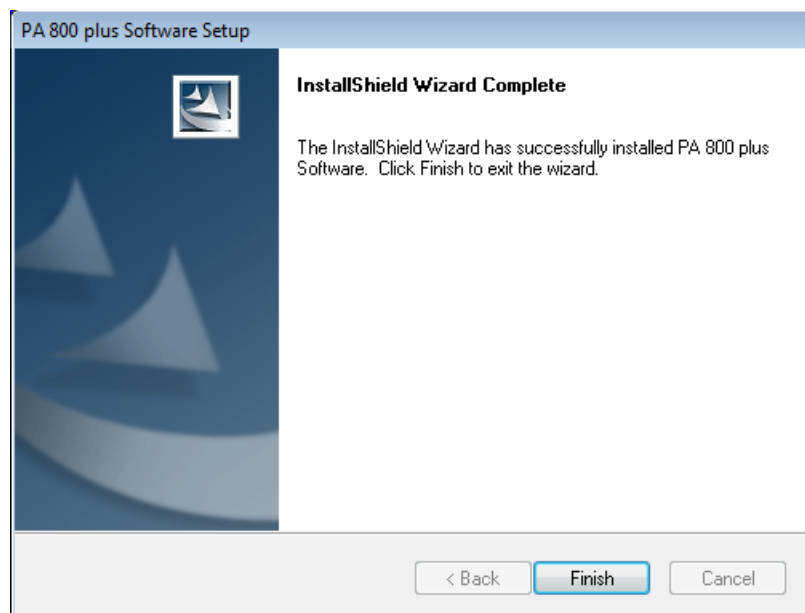
Figure 3-18 Select Program Folder



Installation Instructions

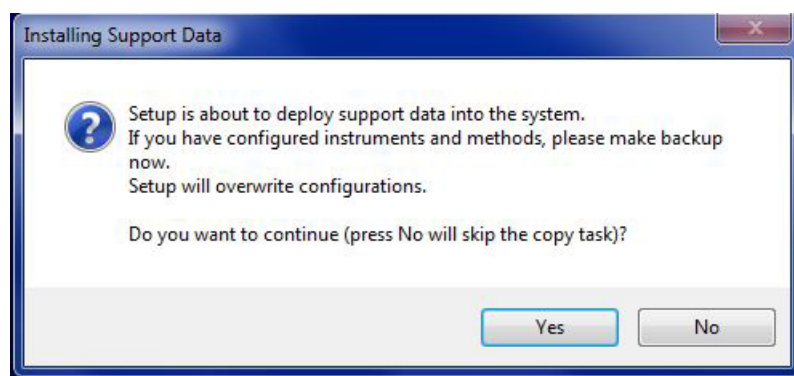
- If this is the first time that the 32 Karat software has been installed on the computer, then the InstallShield Wizard Complete page opens. Go to step 5 to complete the installation.

Figure 3-19 PA 800 plus Software Setup Page: InstallShield Wizard Complete



- If the 32 Karat software has been installed on the computer before, then the Installing Support Data dialog opens. Go to step 4 to complete the installation.

Figure 3-20 Installing Support Data Dialog



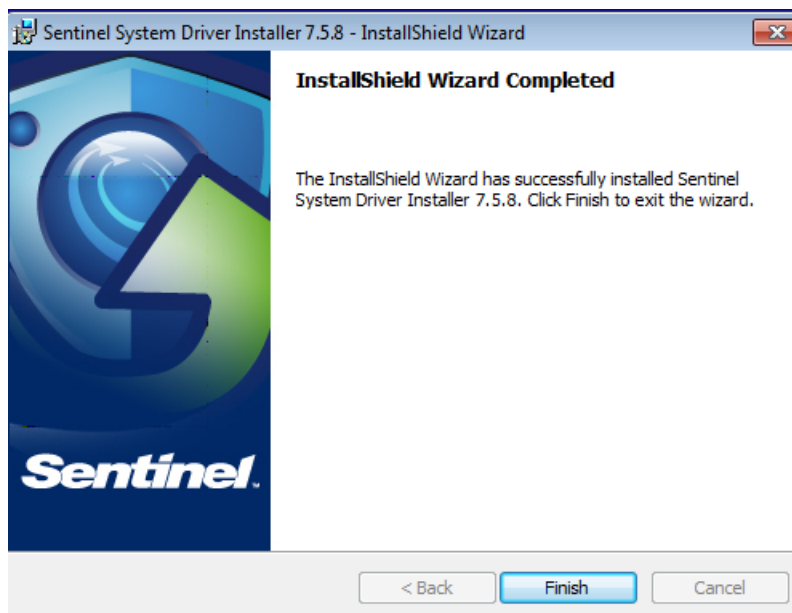
4. Upgrade the driver to complete the installation:
 - a. Click **Yes**.

Figure 3-21 Sentinel System Driver Installer



- b. Click **Upgrade**, and then accept the license agreement and other default values until the installation is completed.

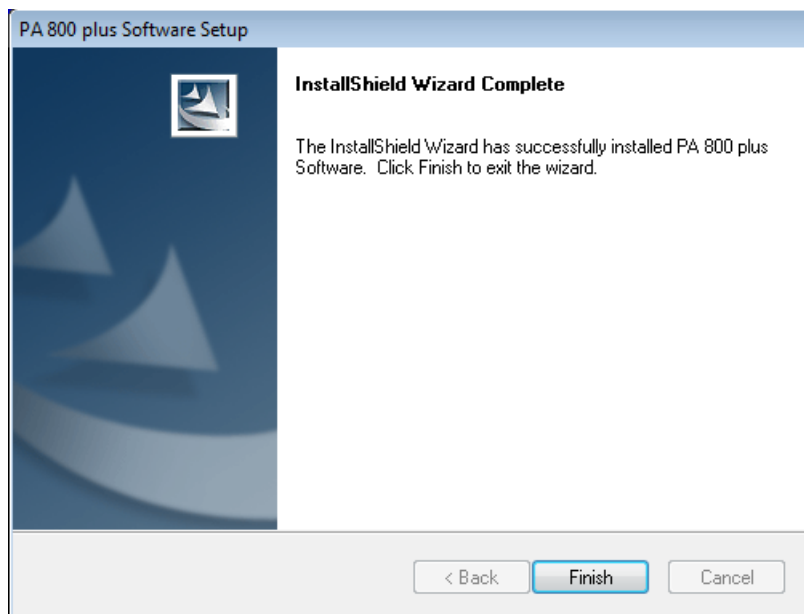
Figure 3-22 Sentinel System Driver Installer: InstallShield Wizard Completed



- c. On the Sentinel System Driver Installer page, click **Finish**.

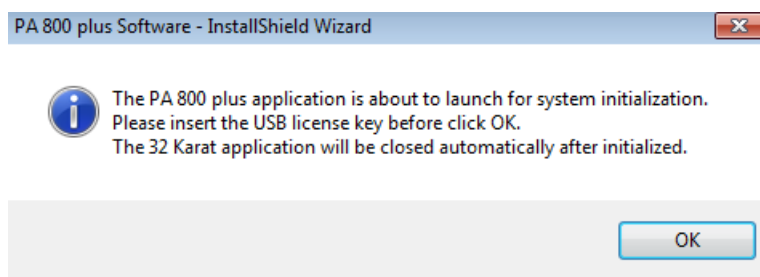
The PA 800 plus Software Setup wizard opens.

Figure 3-23 PA 800 plus Software Setup Page: InstallShield Wizard Complete



5. On the Installshield Wizard Complete page, click **Finish**. A prompt for the license key is shown.

Figure 3-24 Insert USB License Key Dialog



6. Install the license key in a USB port on the computer, wait 20 seconds, and then click **OK**. The 32 Karat main window opens and then closes. The installation is completed.

Install the GU Value Software

This software is required to analyze samples prepared using the Fast Glycan Labeling and Analysis.

- Double-click **GUValueSoftware.exe** and then follow the on-screen instructions. When prompted, accept the default values.

Note: Do not change the destination folder for the software. The software will not work unless it is installed in the C:\GUValueSoftware folder.

Configure the Sciex PDF Writer Software


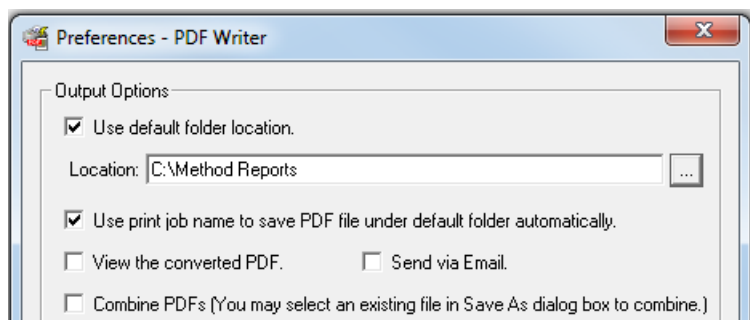
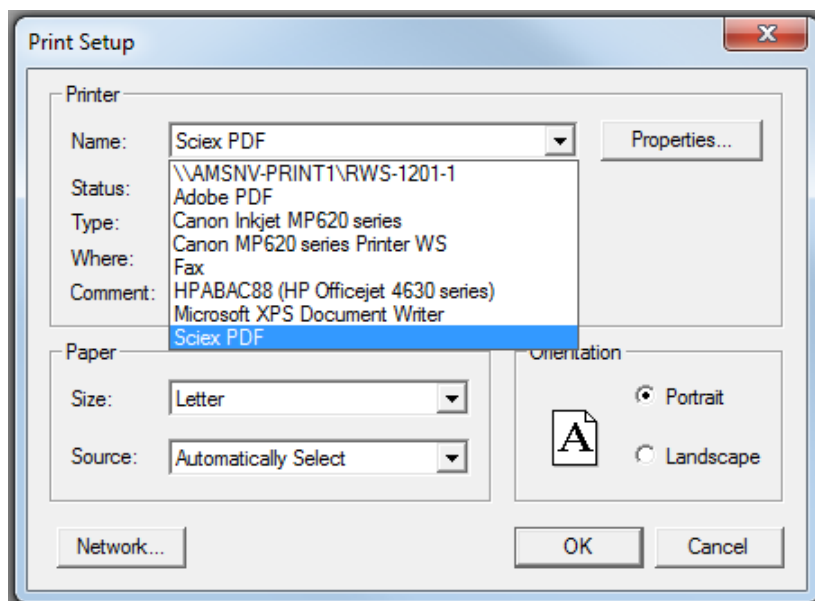
1. Create a folder named `Method Reports` in C:\.
2. Set the preferences for the Sciex PDF Writer software.
 - a. From the **Start** menu in Windows Explorer, click **All Programs > Sciex PDF > Preferences**.
 - b. Make sure that the **Use default folder location** check box is selected.
 - c. Click  (Browse) and then select C:\Method Reports.
 - d. Make sure that the **Use print job name to save PDF file under default folder automatically** check box is selected.

Figure 3-25 Default Folder Location



3. Click **OK** in the Preferences - PDF Writer dialog to save the changes and close the dialog.
4. Start the 32 Karat software and then log in as an administrator.
5. Right-click the **Fast Glycan** instrument and then click **Open Offline**. In the **User** field, type `pa800`, in the **Password** field, type `plus`, and then click **OK**.
6. Configure the printer for the Fast Glycan instrument.
 - a. Double-click the Fast Glycan instrument icon in the **32 Karat Software Enterprise** window.
 - b. Click **File > Print Setup**.
 - c. Click **Sciex PDF** in the **Name** list and then click **OK**.

Figure 3-26 Print Setup Dialog



Replace Earlier Versions of the Project Files

The **PA 800 Plus Project Files 10.3.20** file includes these project files:

- **PA 800 Plus CZE Application Files 10.3.20**
 - **PA 800 Plus DNA 20kb Application Files 10.3.20**
 - **PA 800 Plus RNA 9000 Application Files 10.3.20**
1. Browse to the folder where the installation files were saved, and then copy the contents of the **PA 800 Plus Project Files 10.3.20** file.
 2. Browse to the `C:/32Karat/Projects` folder, and then paste the contents of the **PA 800 Plus Project Files 10.3.20** file.
 3. To make all of the application files available in the 32 Karat software, add the projects. Refer to the document: *System Administration Guide*.

Do a Software Qualification Test

Do this test to make sure that the correct 32 Karat software files are in use.

1. Browse to the `C:\32Karat\SoftwareQualify` folder, and then click the `Software Qualification.exe` file.
2. Click **Verify Software**.

- If all of the test results are `Pass`, then the test is completed.
- If a `Fail` test result occurs, then go to sciex.com/request-support.

3. Click **Exit**.

Contact Us

Addresses

EC Authorized Person

AB Sciex Netherlands B.V.
1e Tochtweg 11,
2913LN Nieuwerkerk aan den IJssel
Netherlands



Made in Singapore

AB Sciex Pte. Ltd.
Blk33, #04-06 Marsiling Industrial Estate Road 3
Woodlands Central Industrial Estate, Singapore 739256

SCIEX Headquarters

AB Sciex LLC
250 Forest Street
Marlborough, MA 01752
USA

Customer Training

- Global: sciex.com/contact-us

Online Learning Center

- [SCIEX Now Learning Hub](#)

Buy Supplies and Reagents

Buy SCIEX supplies and reagents online at store.sciex.com. To make an order, use the account number on the quote, order confirmation, or shipping documents. Customers in the United States, Canada, United Kingdom, Belgium, Netherlands, France, Germany, and Switzerland have access to the online store. Access will be given to different countries in the future. For customers in different countries, contact a local SCIEX representative.

SCIEX Support

SCIEX and its representatives have a global staff of fully-trained service and technical specialists. They can supply answers to questions about the system or any technical issues

that might occur. For more information, go to the SCIEX website at sciex.com or use one of the links that follow to contact us.

- sciex.com/contact-us
- sciex.com/request-support

Cybersecurity

For the latest guidance on cybersecurity for SCIEX products, visit sciex.com/productsecurity.

Documentation

This version of the document supersedes all of the previous versions of this document.

To find software product documentation, refer to the release notes or software installation guide that comes with the software.

To find hardware product documentation, refer to the documentation that comes with the system or component.

The latest versions of the documentation are available on the SCIEX website, at sciex.com/customer-documents.

Note: To request a free, printed version of this document, contact sciex.com/contact-us.
