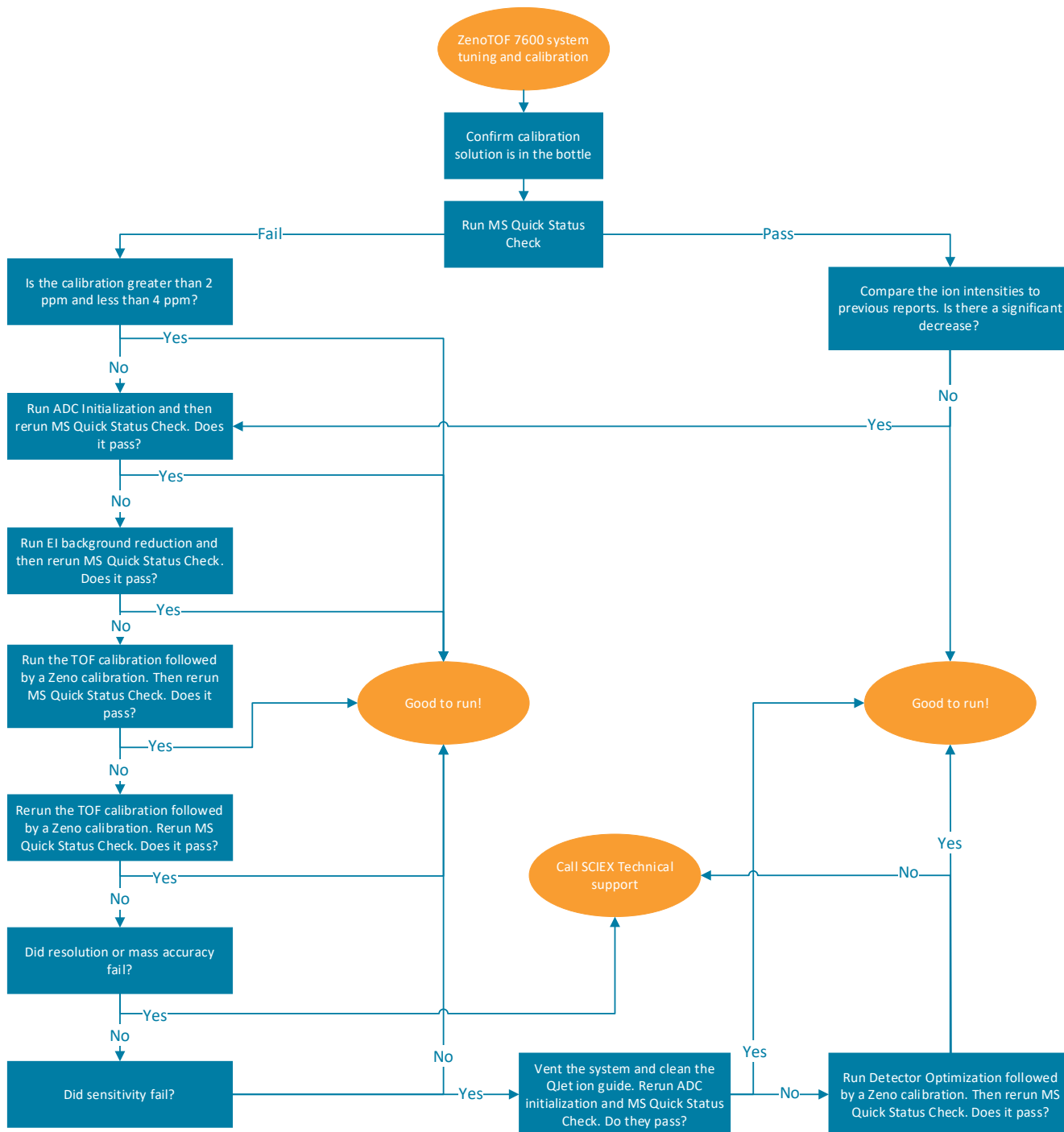


ZenoTOF 7600 system tuning and calibration checks



The SCIEX clinical diagnostic portfolio is For In Vitro Diagnostic Use. Rx Only. Product(s) not available in all countries. For information on availability, please contact your local sales representative or refer to www.sciex.com/diagnostics. All other products are For Research Use Only. Not for use in Diagnostic Procedures.

Trademarks and/or registered trademarks mentioned herein, including associated logos, are the property of AB Sciex Pte. Ltd. or their respective owners in the United States and/or certain other countries (see www.sciex.com/trademarks).

© 2023 DH Tech. Dev. Pte. Ltd. MKT-26363-B



Headquarters
 500 Old Connecticut Path | Framingham, MA 01701 USA
 Phone 508-383-7700
sciex.com

International Sales
 For our office locations please call the division headquarters or refer to our website at sciex.com/offices