

More compounds
More uptime
More reliable results



Accomplish your analysis goals with the SCIEX Triple Quad™ 3500 LC-MS/MS System

Powerful, modern hardware for ultimate reliability and productivity on a budget. The Triple Quad 3500 system keeps with tradition, featuring the legacy IonDrive™ Turbo V Source and Curtain Gas™ Interface.

- Modern design – performance and productivity
- More compounds per injection – absolute, reliable quantitation with Turbo V source
- Never miss a peak – sensitivity and high-quality data acquisition algorithms with Analyst® software
- Excellent uptime – less maintenance for Increased sample volume and improved laboratory productivity with Curtain Gas interface
- SCIEX service and support resources for your success
- Proprietary technology – Curved LINAC® Collision Cell, High pressure Q0 and QJet® Ion Guide, Fast eQ™ Electronics and AcQuRate™ Pulse Counting Detector

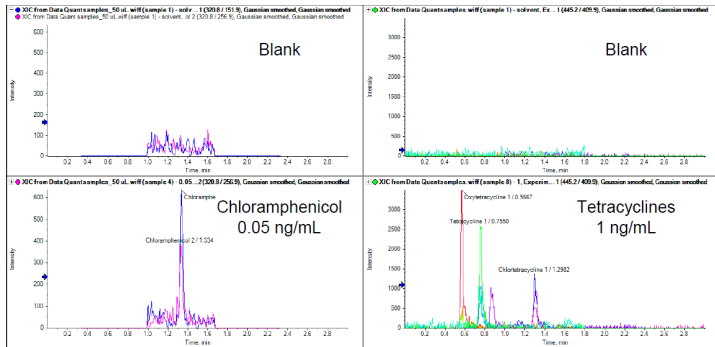
	Matrix	Analyte	MRL/MRPL (EU)	Sample quantity	Injection volume	LOQ
1	Milk	Chloramphenicol	0.3PPB (0.3 ug/kg)	1 mL	20 µL	0.1 PPB (0.1 µg/kg)
2	Honey	Chloramphenicol	0.3PPB (0.3 ug/kg)	1 gm	20 µL	0.1 PPB (0.1 µg/kg)
3	Meat (Chicken)	Chloramphenicol	0.3PPB (0.3 ug/kg)	2 gm	20 µL	0.01 PPB (0.01 µg/kg)
4	MILK	AOZ	1PPB	3 mL	10 µL	0.5 PPB (0.5 µg/kg)
5	Milk	AMAZ	1PPB	3 mL	10 µL	0.5 PPB (0.5 µg/kg)
6	Milk	AHD	1PPB	3 mL	10 µL	0.5 PPB (0.5 µg/kg)
7	Milk	SEM	1PPB	3 mL	10 µL	0.5 PPB (0.5 µg/kg)
8	Honey	AOZ	1PPB	1 gm	10 µL	0.5 PPB (0.5 µg/kg)
9	Honey	AMAZ	1PPB	1 gm	10 µL	0.5 PPB (0.5 µg/kg)
10	Honey	AHD	1PPB	1 gm	10 µL	0.5 PPB (0.5 µg/kg)
11	Honey	SEM	1PPB	1 gm	10 µL	0.5 PPB (0.5 µg/kg)
12	Milk	Streptomycin	100PPB	1 mL	20 µL	10.0PPB (10 µg/kg)
13	Milk	DihydroStreptomycin	100PPB	1 mL	20 µL	10.0PPB (10 µg/kg)
14	Honey	Streptomycin	10PPB	1 gm	25 µL	0.25PPB (0.25 µg/kg)
15	Honey	DihydroStreptomycin	10PPB	1 gm	25 µL	0.25PPB (0.25 µg/kg)
16	Honey	Sulfamerazin	10PPB	1 gm	10 µL	1.0PPB (1 µg/kg)
17	Honey	Sulfadiazin	10PPB	1 gm	10 µL	1.0PPB (1 µg/kg)
18	Honey	Sulfamethazin	10PPB	1 gm	10 µL	1.0PPB (1 µg/kg)
19	Honey	Sulfadimethoxin	10PPB	1 gm	10 µL	1.0PPB (1 µg/kg)
20	Honey	Sulfamethoxypridazine	10PPB	1 gm	10 µL	1.0PPB (1 µg/kg)

	Matrix	Analyte	MRL/MRPL (EU)	Sample quantity	Injection volume	LOQ
21	Honey	Sulfamethoxazol	10PPB	1 gm	10 µL	1.0PPB (1 µg/kg)
22	Honey	Sulfadoxine	10PPB	1 gm	10 µL	1.0PPB (1 µg/kg)
23	Honey	Sulfathiazole	10PPB	1 gm	10 µL	1.0PPB (1 µg/kg)
24	Honey	Sulfapyridine	10PPB	1 gm	10 µL	1.0PPB (1 µg/kg)
25	Milk	Sulfamerazin	100PPB	1 mL	10 µL	5.0PPB (5 µg/kg)
26	Milk	Sulfadiazin	100PPB	1 mL	10 µL	5.0PPB (5 µg/kg)
27	Milk	Sulfamethazin	100PPB	1 mL	10 µL	5.0PPB (5 µg/kg)
28	Milk	Sulfadimethoxin	100PPB	1 mL	10 µL	5.0PPB (5 µg/kg)
29	Milk	Sulfamethoxypridazine	100PPB	1 mL	10 µL	5.0PPB (5 µg/kg)
30	Milk	Sulfamethoxazol	100PPB	1 mL	10 µL	5.0PPB (5 µg/kg)
31	Milk	Sulfadoxine	100PPB	1 mL	10 µL	5.0PPB (5 µg/kg)
32	Milk	Sulfathiazole	100PPB	1 mL	10 µL	5.0PPB (5 µg/kg)
33	Milk	Sulfapyridine	100PPB	1 mL	10 µL	5.0PPB (5 µg/kg)
34	Mango & Onion	Pesticides	10PPB	10 gm	10 µL	1.0PPB (1 µg/kg)

Table 1. Exceptional results achieved for the analysis of more than 200 pesticide residues in food samples in a single injection on the Triple Quad™ 3500 system.

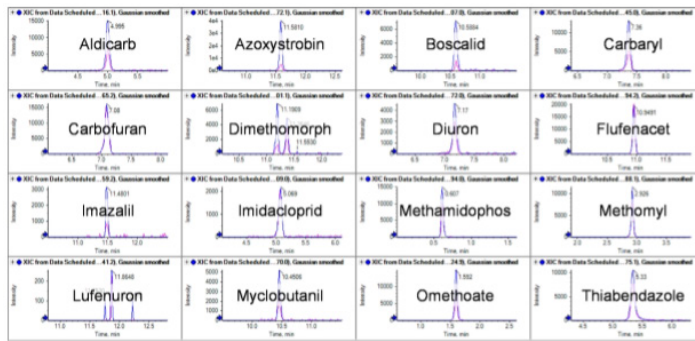
Antibiotics – low-level quantitation achieved

- Chloramphenicol LOQ of 0.05 ng/mL (50 µL injected)
- MRPL as low as 0.3 µg/kg Tetracyclines LOQ of < 1 ng/mL (10 µL injected), MRL 50-100 µg/kg)



Performance examples:

- Sensitivity of selected pesticides detected at a concentration of 5 ng/mL using the Triple Quad 3500 system



Visit us at <https://sciex.com/accomplish-your-analysis-goals> to download the application notes. For more information, email us at Marketing.India@sciex.com

The SCIEX clinical diagnostic portfolio is For In Vitro Diagnostic Use. Rx Only. Product(s) not available in all countries. For information on availability, please contact your local sales representative or refer to <https://sciex.com/diagnostics>. All other products are For Research Use Only. Not for use in Diagnostic Procedures.

Trademarks and/or registered trademarks mentioned herein are the property of AB Sciex Pte. Ltd. or their respective owners in the United States and/or certain other countries.

© 2019 DH Tech. Dev. Pte. Ltd.

RUO-MKT-07-10744-A

