

The Scheduled MRM™ Algorithm Pro

Automated intelligent design of high throughput, high quality quantitation assays

The use of Multiple Reaction Monitoring (MRM) for targeted quantification on triple quadrupole-based mass spectrometry (MS) systems is one of the most widely used MS techniques in use today. Because of its well-known sensitivity and selectivity attributes, MRM is amenable to many different analytes, applications, and markets. However as more extensive analyte panels are increasingly being demanded, higher MRM multiplexing is becoming essential for throughput.

With the Scheduled MRM Pro Algorithm, significantly more MRM transitions can be monitored in a single acquisition while maintaining the quantitative reproducibility that is essential for targeted quantification assays. By monitoring each MRM transition only around its expected elution time (Figure 1), many more analytes can be monitored. This MRM scheduling decreases the number of concurrent MRMs monitored at any point in time, allowing both the cycle time and dwell time to remain optimal at higher levels of MRM multiplexing. Building on the intelligence of the original Scheduled MRM Algorithm, the Scheduled MRM Algorithm Pro further accelerates MRM assay development and increases the robustness of large multiplexed assays. MRM assays consisting of up to 4000 MRM transitions can be run, facilitated by intelligent use of retention time windows during an LC analysis, all while maintaining an optimum number



of data points across each peak to ensure the highest precision in quantitative measurements.

Key features of the Scheduled MRM Algorithm Pro

- The Scheduled MRM Algorithm Pro enables optimized cycle times and maximized dwell times to be used for MRM transitions to allow many more analytes to be analyzed in a single run without sacrificing good analytical precision
- The Scheduled MRM Algorithm Pro simplifies method building by automatically associating retention times with MRM transitions and automatically building optimized acquisition methods based on key parameters provided by the user
- Up to 4000 MRMs can be scheduled in a single run on the SCIEX Triple Quad™ and QTRAP® Systems
- Scheduled MRM Algorithm Pro transitions can also be used as survey scans in MIDAS™ workflow acquisition methods, to obtain high sensitivity MS/MS spectra for ID confirmation on detected analytes
- The Scheduled MRM Algorithm Pro can trigger secondary MRM transitions from primary transitions for improved dwell times and cycle times by only acquiring secondary transitions when the compound is eluting and above a threshold
- Further optimization is enabled through intelligent features including Dwell Time Weighting, Flexible Window Width, Dynamic Window Extension, and Variable Q1/Q3 Resolution Settings – all powerful features for ultimate assay quality

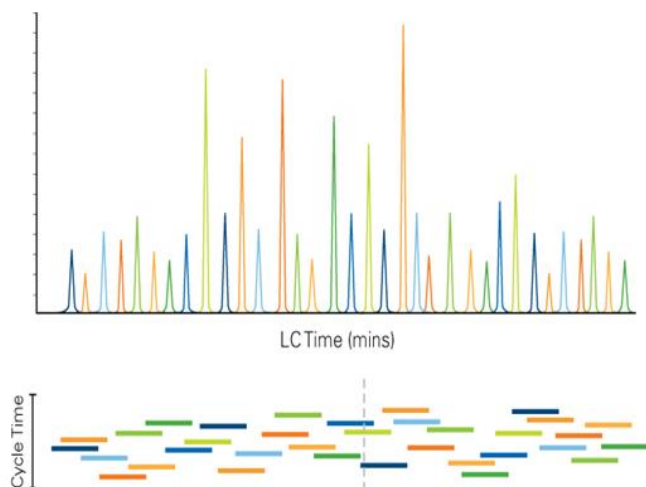


Figure 1. Scheduled MRM Algorithm Pro. Using knowledge of the elution time of each analyte, each MRM transition is monitored only during a short retention time window. This allows many more MRM transitions to be monitored in a single LC run, while still maintaining maximized dwell times and optimized cycle times.

Key Parameters of Multiple Reaction Monitoring (MRM)

Dwell Time: Dwell time is the time spent acquiring a specific MRM transition during each cycle. Because of the LINAC® Collision Cell in SCIEX TripleQuad™ and QTRAP Systems, very short dwell times can be used (5 ms or less). However, higher dwell times are always desirable for better signal to noise ratio and sensitivity, especially for lower abundant analytes.

Cycle Time: The cycle time is the amount of time it takes for the instrument to run through each of the MRMs in a list before starting over again. Each cycle is one LC data point. Thus, the ideal cycle time for an MRM assay is a chromatographic consideration. A cycle time which provides an LC peak sampling rate of at least 6-8 data points across the peak at half height is optimal for LC peak integration. Better peak integration will provide better accuracy, especially for lower abundant analytes.

Duty Cycle: Duty cycle is effectively the amount of time spent monitoring an analyte: the higher the duty cycle the better the data quality. Duty cycle is proportional to dwell time and inversely proportional to the number of concurrent MRMs monitored. An increase in multiplexing using more concurrent MRM transitions can cause a decrease in the analytical

reproducibility. Therefore, it is important to minimize the number of concurrent MRM transitions.

Scheduled MRM Algorithm Pro - the ideal way to maximize multiplexing

An advantage to using MRM assays for quantitative analysis is the apparent ease of multiplexing (measuring higher numbers of MRMs per method). However, as shown in Figure 2, the key parameters of MRM analysis must be considered. Data quality can be severely impacted if dwell times are decreased and cycle times are increased beyond a reasonable extent. As illustrated in Figure 1, knowledge of the elution time of each analyte allows the Scheduled MRM Algorithm Pro to create an acquisition method where each MRM transition is monitored only across a short time window. At any one point in time, the number of concurrent MRM transitions is significantly reduced resulting in much higher duty cycles for each analyte. The software computes maximal dwell times for the co-eluting species while maintaining the desired cycle time. A maximized dwell time, an optimal cycle time, and the highest possible duty cycle for each MRM ensure that the analytical precision is maintained at higher multiplexing.

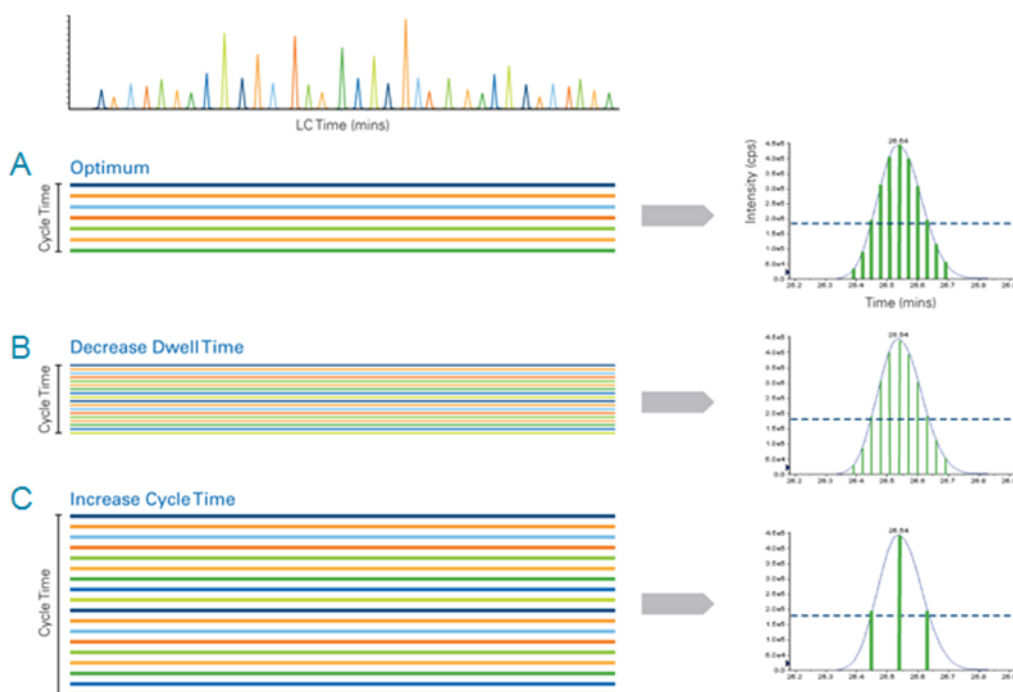


Figure 2. Key considerations for maximizing MRM multiplexing. A) Traditionally MRMs are monitored across the entire LC run with fixed dwell times and cycle times. This produces good sampling of the LC peak (right), where the width of the bars indicates the dwell time and the spaces between the bars indicate the cycle time. B) Tripling the multiplexing by decreasing dwell time maintains good peak sampling, but dwell time and duty cycle are impacted (reduced line widths). C) Tripling the multiplexing by extending cycle time can maintain dwell time but results in very poor peak sampling (large spaces between lines).

Easy, automated method creation

One of the main features that makes the Scheduled MRM Algorithm Pro so powerful is the ease with which quantitative MRM acquisition methods can be created. The user is required to specify several key parameters which may be typed in, imported from Excel, or from Skyline Software:

- MRM Transition – the precursor (Q1) and product (Q3) mass
- Expected RT – the retention time for each MRM transition
- MRM Detection Window – the duration of the LC peak
- Target Scan Time – effectively the cycle time

Within seconds, the algorithm automatically builds an acquisition method that schedules the appropriate MRM transitions to be monitored only around their expected elution time. No tedious manual scheduling is required.

Besides these key parameters, several optional advanced settings can also be specified. These include (1) MRM Triggered MRM acquisition, (2) Dwell Time Weighting, (3) acquisition of MRM triggered MS/MS data and use of the Group based triggering, (4) use of a Flexible Window Width, (5) Dynamic Window Extension, and (6) Variable Q1/Q3 Resolution settings. These can be used or left empty (or set to default values) and are discussed below.

MRM Triggered MRM acquisition for even greater scheduling benefits

For many applications, it is preferable to monitor more than one MRM transition for each compound. This can help to optimize assay robustness and quantitative accuracy. But because this adds to the overall number of MRM transitions to monitor for the assay, this can adversely affect the total number of compounds

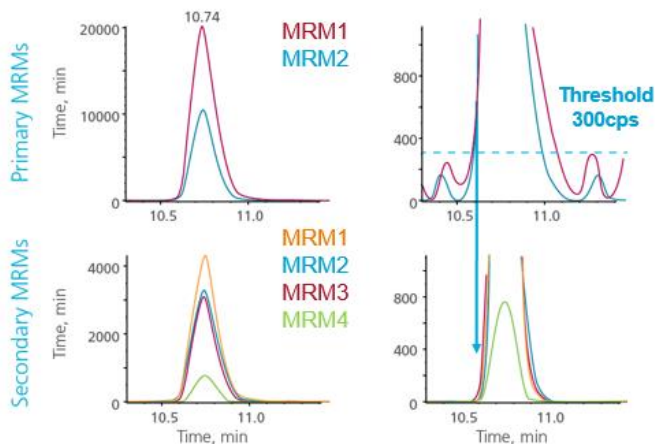


Figure 3. MRM triggered MRM. Two primary MRM transitions (top left) trigger four secondary MRM transitions (bottom left) only when they exceed a predefined threshold (300 cps in this case). On the right, expanded regions are shown around the threshold region.

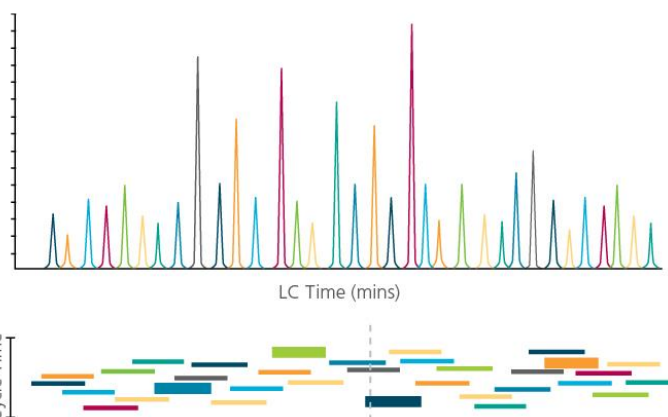


Figure 4. Dwell time weighting. Higher abundant transitions are dynamically assigned lower dwell times (narrow bars at the bottom) while lower abundant transitions are assigned higher dwell times (wider bars at the bottom). This maintains the cycle time and facilitates the acquisition of low level peaks with better signal to noise ratios.

that can be analyzed. To combat this, an MRM triggered MRM acquisition strategy can be used (Figure 3). With MRM triggered MRM acquisition, one primary transition (or more) is monitored and triggers secondary MRMs for the same compound only when the intensity of the primary transition exceeds the defined threshold. Secondary MRMs are monitored until primaries drop back below the threshold, thus are monitored across the LC peak. The secondary transitions maintain accurate intensity and, with appropriate threshold settings, also maintain accurate and quantifiable areas.

Use dwell time weighting to maximize signal to noise ratio for low level analytes

Higher dwell times improve the signal to noise ratio of MRM transitions. However, indiscriminately increasing dwell times will eventually have a negative impact on the cycle time. Using the same dwell time on a high intensity compound (such as an internal standard) as on a low intensity compound (such as a difficult to ionize analyte) could be unnecessary and waste precious cycle time. Dwell time weighting allows the desired dwell time to be expressed as a relative factor. For example, highly abundant components can be assigned a normal weight (1) while difficult compounds can be assigned a high weight (~5). During the run, the available dwell time will be assigned based upon this weighting (Figure 4). This maintains the cycle time and optimizes the signal to noise ratio for low abundant peaks.

Fast and powerful compound identification using the Group MIDAS Workflow

In complex samples and matrices, it is not uncommon to find multiple peaks with the same masses that coelute. Multiple MRM transitions or ion ratios can all be confounded by these interferences, but a full scan MS/MS spectrum can identify the compound of interest and help identify any interferences. The MRM triggered full scan MS/MS workflow available only on QTRAP Systems provides extremely fast and sensitive MS/MS acquisition during MRM experiments. It provides evidence for the compound, as well as evidence for any interfering compounds that may be coeluting.

The Group based triggering option takes this feature one step further. Triggering a full scan MS/MS acquisition for any single transition can sometimes lead to the triggering on signal other than the target analytes. This can be increasingly problematic for samples in complex matrices with multiple isobaric peaks and large MRM assay panels. With many spurious MS/MS triggering events, this can unnecessarily reduce the sampling for other transitions. Using a group of MRM transitions for a target compound as a trigger reduces the false triggers. With the group-based triggering workflow, all grouped transitions must rise above a specified threshold before MS/MS acquisition is triggered. This effectively limits the acquisition to only those times when a confirmation MS/MS spectrum is worth acquiring (Figure 5).

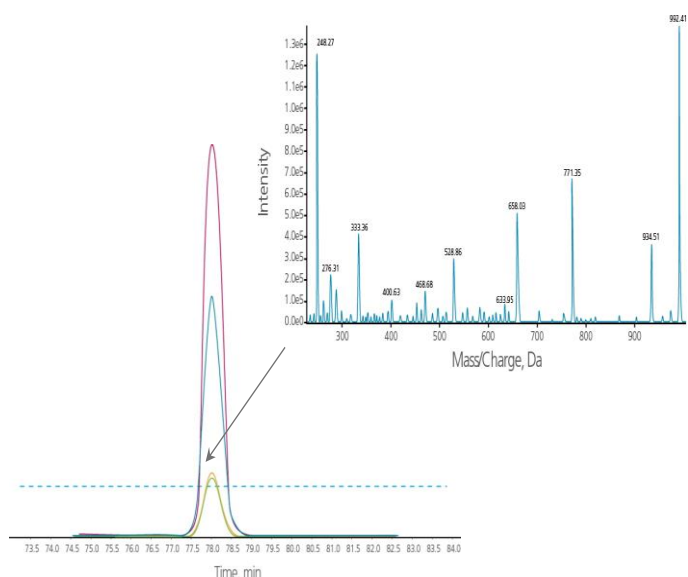


Figure 5. The group based MRM triggered MS/MS workflow. Full scan MS/MS data is only acquired when the intensities of all of the peaks within a group are above a pre-set threshold. This helps to focus the acquisition of enhanced product ion scans to only the analytes of interest while minimizing false positive acquisitions

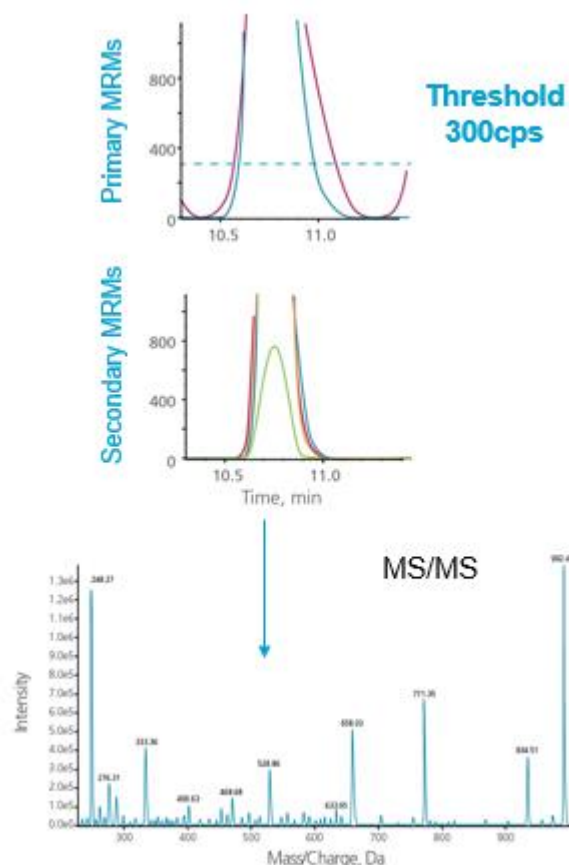


Figure 6. MRM triggered MRM acquisition with full scan MS/MS. The two primary transitions at the top must both pass a threshold before secondary transitions are triggered. Once the secondary transitions surpass their own preset thresholds, a full scan MS/MS spectrum is triggered.

MRM triggered MRM acquisition can be combined with the Group MIDAS Workflow

The combination of the MRM Triggered MRM feature with the Group MIDAS Workflow feature creates a powerful logic especially useful for complex samples and large assay panels. Here, primary MRM transitions are used to trigger secondary MRM transitions and only when all primary AND secondary transitions are above the thresholds will MS/MS acquisition be triggered (Figure 6). Thresholds can be set individually. For very weak transitions the threshold can even be set to zero to ensure MS/MS data will be acquired regardless of the intensities observed for those peaks. Alternatively, thresholds can also be set based upon known ion ratios.

Improving retention time robustness with a flexible RT window width

It is not uncommon for chromatographic peak widths to vary at different times in the LC gradient. Additionally, often it is known *a priori* that some compounds will require a wider retention time (RT) window due to chromatographic behavior or known variation. With Flexible RT Window Widths, each MRM transition can have its own RT window (Figure 7). Wider windows can be assigned to analytes that show higher variance run to run or have broader peak widths. This can be entered as a desired window width for each analyte if different from the global method settings.

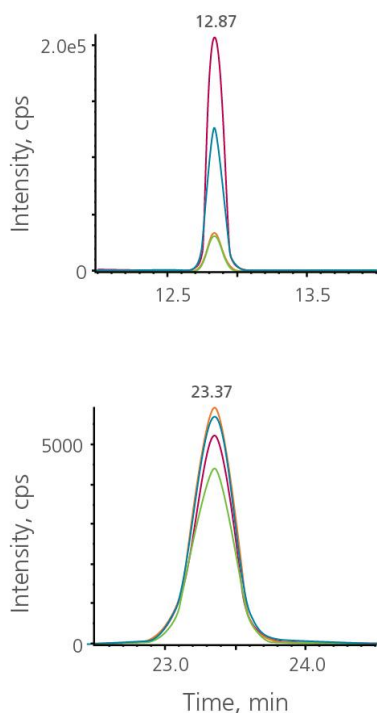


Figure 7. Flexible window width. Top: The default MRM detection window for compounds was set to 10 seconds. Bottom: For this compound, the default window was overridden with the value 60 seconds.

Ensuring retention time robustness with dynamic window extension

Sometimes chromatography is not 100% reproducible and retention times can shift. Any instability in retention time (RT) can have a serious impact on quantitation quality, as entire portions of the peak can be missing. Dynamic Window Extension accommodates for this by automatically increasing the acquisition window for any MRM transition that has intensity above a specified threshold (Figure 8). Windows are automatically extended for transitions where the peak has not completely eluted (when the signal is still above the user defined threshold). The acquisition is extended until the peak drops below the threshold or for up to one additional window. This feature works automatically with no requirement for special retention time standards and allows dramatic improvement in RT robustness, but with minimal impact on overall cycle times.

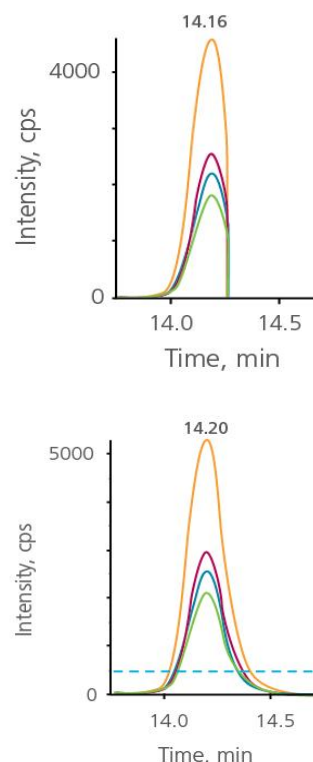


Figure 8. Dynamic window extension. Top: If retention times shift, peaks can be inadvertently cut off from acquisition. Bottom: Dynamic window extension automatically extends the window until the peaks fall below a threshold or up to one extra window width.

Q1 Mass (Da)	Q3 Mass (Da)	Retention Time (min)	ID	Group	MRM Window (sec)	Primary / Secondary	Trigger Threshold	Dwell Weight	Q1 Resolution	Q3 Resolution	EXP (volts)
570.3	1052.5	10	A1G.NMWGLSVYADKPETTK.3y9	A1G	120				Unit	Unit	20
570.3	575.3	10	A1G.NMWGLSVYADKPETTK.3y5	A1G	120				Unit	Unit	20
531.3	633.4	10	A1AC.EIGELYLPK.2y5	A1AC	120				Unit	Low	26
531.3	819.5	10	A1AC.EIGELYLPK.2y7	A1AC	120				Unit	Low	26
631	790.4	10	A1A.DTEEEEDFHVDQVTTVK.3y7	A1A	180				Low	Unit	20
631	889.5	10	A1A.DTEEEEDFHVDQVTTVK.3y8	A1A	180				Low	Unit	20
619.4	995.5	10	A1G.LETPDFQLFK.2y8	A1G	120				Unit	Unit	29
619.4	894.5	10	A1G.LETPDFQLFK.2y7	A1G	120				Unit	Unit	29
656.8	771.4	10	A2P.LGNQEPGGQTALK.2y8	A2P	180				Unit	Unit	30
656.8	900.5	10	A2P.LGNQEPGGQTALK.2y9	A2P	180				Unit	Unit	30

Figure 9. Variable Q1 and Q3 windows. The resolution settings for Q1 and Q3 can be individually set for each MRM transition if desired. This allows more flexible balancing of specificity and sensitivity for each analyte transition.

Variable Q1 and Q3 resolution settings for optimum sensitivity and specificity

The quadrupole resolution for each quadrupole, Q1 and Q3, can be set individually for each MRM transition if desired (Figure 9). For example, for low abundant peaks, some specificity can be sacrificed in order to gain sensitivity. A wider Q1 window setting for Q1 and Q3 will result in a lower resolution but a higher sensitivity. Alternatively, Unit resolution or higher can be used to increase specificity when needed. Thus, the sensitivity / specificity balance for each analyte can be individually tailored for ultimate method flexibility.

Table 1. Benefits of the Scheduled MRM Algorithm Pro.

Benefit	Feature
Increased Assay Robustness	Dynamic Window Extension Flexible Window Width
Increased Assay Multiplexing	MRM Triggered MRM
Increased Assay Sensitivity and Accuracy	Dwell Time Weighting Variable Q1 / Q3 Windows
Confidence in Assay Results	MRM Triggered MS/MS

Conclusions

Using the Scheduled MRM Algorithm to build MRM acquisition methods provides tremendous advantages for the generation and use of MRM assays and is available on all SCIEX Triple Quad and QTRAP Systems. It allows a higher number of transitions to be monitored concurrently without having to resort to shorter dwell times or longer cycle times. This ensures that the analytical reproducibility of the MRM assay is maintained at even 4000 MRM transitions during a single LC run. The powerful Scheduled MRM Algorithm Pro makes it extremely easy to create highly multiplexed MRM assays, without the complicated and tedious manual interaction required for creation of time period methods. The input of just a few key parameters allows the algorithm to automatically and intelligently create the optimum assay in seconds.

Additionally, the advanced features of the Scheduled MRM Pro Algorithm further maximize the overall quality of the final assay with powerful and intelligent settings to improve low level, variable transitions and increase multiplexing and confidence (Table 1).

The SCIEX clinical diagnostic portfolio is For In Vitro Diagnostic Use. Rx Only. Product(s) not available in all countries. For information on availability, please contact your local sales representative or refer to <https://sciex.com/diagnostics>. All other products are For Research Use Only. Not for use in Diagnostic Procedures.

Trademarks and/or registered trademarks mentioned herein, including associated logos, are the property of AB Sciex Pte. Ltd. or their respective owners in the United States and/or certain other countries.

© 2018 DH Tech. Dev. Pte. Ltd. RUO-MKT-02-8539-A. AB SCIEX™ is being used under license.



Headquarters
500 Old Connecticut Path | Framingham, MA 01701 USA
Phone 508-383-7700
sciex.com

International Sales
For our office locations please call the division headquarters or refer to our website at sciex.com/offices