

## Next Generation Quality Control in Pharma Applications

### The General Unknown Comparative Screening (GUCS) Workflow for Detection of NDMA and Other Impurities in Valsartan using the SCIEX X500R QTOF System

Axel Besa  
SCIEX, Germany

Valsartan is a prescription drug used to treat high blood pressure and heart failure. In 2012 the patent for the drug expired allowing many generic manufacturers to enter the market. Six years later on July 2018, regulatory agencies around the world issued voluntary recalls for many pharmaceutical products that contained Valsartan because N-nitrosodimethylamine (NDMA), a known carcinogen and genotoxin, had been found in the bulk ingredient.<sup>1,2</sup> More recently N-nitrosodiethylamine (NDEA) was also identified. These impurities are now thought to originate from a change in synthesis that occurred back in 2012, even though no impurities were detected at the time and all regulatory agencies and supervisory authorities gave their approval for these changes.

The class of sartans, like Irbesartan, Losartan, and Valsartan are angiotensin-II-receptor antagonists (ARB) that are used worldwide to lower blood pressure and improve blood flow. The latest FDA recall now identifies over 1000 ARB product lots for their contamination with potential carcinogenic impurities.<sup>3</sup>

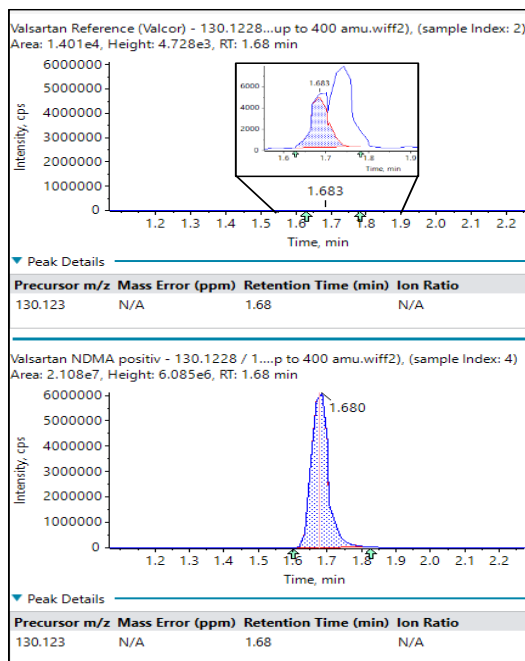


These recalls have profound effects on loss of business, loss of reputation, and loss of trust - not only for the pharmaceutical companies themselves but also for the regulatory agencies that oversee operations.

New analytical techniques and workflows could be of great benefit to pharma QC labs as the tests that had been in use were insufficient to immediately and decisively detect these impurities. This technical note demonstrates the use of an LC-MS/MS General Unknown Comparative Screening (GUCS) workflow that can increase drug safety through quantitative detection of impurities, allow batch-to-batch monitoring for comparison, and is easy to learn and implement in QC labs.

### Key Features of Pharma QC Analysis on the SCIEX X500R QTOF LC-MS/MS System

- The X500R QTOF LC-MS/MS is a high resolution accurate mass system for non-targeted screening, suspected screening, and targeted analysis in a benchtop instrument
- The GUCS workflow using SWATH® Acquisition and SCIEX OS software 1.5 allows easy, accurate, and fast impurity and QC analysis of batch-produced active pharmaceutical substances versus a reference standard
- MarkerView™ software enables statistical analysis to highlight potential impurities that may be originating from shared production sites for generic medical products



**Figure 1. GUCS Workflow.** Extracted ion chromatograms (XICs) for NDMA in a Valsartan reference (top) and pharmaceutical sample (bottom). Both XICs are plotted on the same y-scale. The expanded region (top) shows a very low level, but acceptable amount of NDMA and an isobaric impurity detected in the standard whereas the NDMA is detected at over 1000x higher intensity in the sample (bottom).

## Methods

**Sample Preparation:** After weighting and grinding, 10% by weight of the Valsartan tablets was transferred into 1.5 mL centrifuge tubes, 500  $\mu$ L methanol added, and the tubes shaken vigorously for 5 minutes, followed by sonication for 5 minutes. Next, 500  $\mu$ L MilliQ-water was added, the tubes shaken for 5 minutes, and sonicated for 5 minutes. The samples were then centrifuged at 10,000 rpm at 4 °C for 35 minutes. Finally, the supernatants were transferred directly into brown glass vials.

**Chromatography:** Two LC methods were used with the SCIEX ExionLC™ AD System. In both cases Buffer A = water + 0.1% FA and Buffer B = acetonitrile + 0.1% FA.

- Optimized LC conditions for NDMA and related impurities:** 10  $\mu$ L sample was injected onto a Phenomenex Synergi Polar 100x4.6; 2.5  $\mu$ m column. A flow rate of 900  $\mu$ L/min was used with the gradient outlined in Table 1.
- Generic impurity profiling conditions:** 3  $\mu$ L sample was injected onto a Phenomenex Luna Omega Polar 100x2; 1.6  $\mu$ m column. A flow rate of 600  $\mu$ L/min was used with the gradient outlined in Table 1.

**Table 1: Gradient Conditions for LC-MS Methods.**

Time	%A	%B
<b>Method 1</b>		
0	60	40
0.5	60	40
5.0	0	100
6.5	0	100
7.0	60	40
8.5	60	40
<b>Method 2</b>		
0.0	90	10
0.1	90	10
5.0	0	100
7.0	0	100
7.5	90	10
9.5	90	10

**Mass Spectrometry:** Two different acquisition methods were used with the SCIEX X500R QTOF LC-MS/MS System:

- Optimized MS conditions for NDMA and related impurities:** Positive ion mode atmospheric pressure chemical ionization (APCI) was used as it is known to have the best ionization efficiency to detect NDMA and related impurities. Information dependent acquisition (IDA) was used for monitoring the top 10 candidates using smart dynamic exclusion. TOF MS: 65-400 amu, 100 ms accumulation time. TOF MS/MS: 50-400 amu, 60 ms accumulation time. Total cycle time 0.9 s, Collision energy 40 V with spread of +/- 20 V, source temperature 480 °C, nebulizer current 5  $\mu$ A, DP 60 V, CUR 30 psi, CAD 7, GS1 65 psi.
- Generic impurity profiling conditions:** As the majority of polar and semi-polar compounds can be easily ionized using electrospray ionization (ESI) it was used in positive and negative ion mode for general screening and statistical analysis using SWATH Acquisition. TOF MS: 70-750 amu, 100 ms accumulation time. TOF MS/MS: SWATH acquisition using 12 variable windows at 60 ms accumulation time per window. TOF MS/MS mass range 50-750 amu. Total cycle time 2 s. Collision energy 40 V with spread of +/- 20 V source temperature 540 °C, IS 5500, DP 80 V, CUR 30 psi, CAD 7, GS1 65 psi, GS2 75 psi.

**Data Processing:** SCIEX OS software 1.5 was used for data acquisition and data processing. The GUCS workflow was accomplished using the non-targeted data processing method within the Analytics portion of the software and an internally developed library (which is user selectable). MarkerView software was used for statistical analysis.

## Results

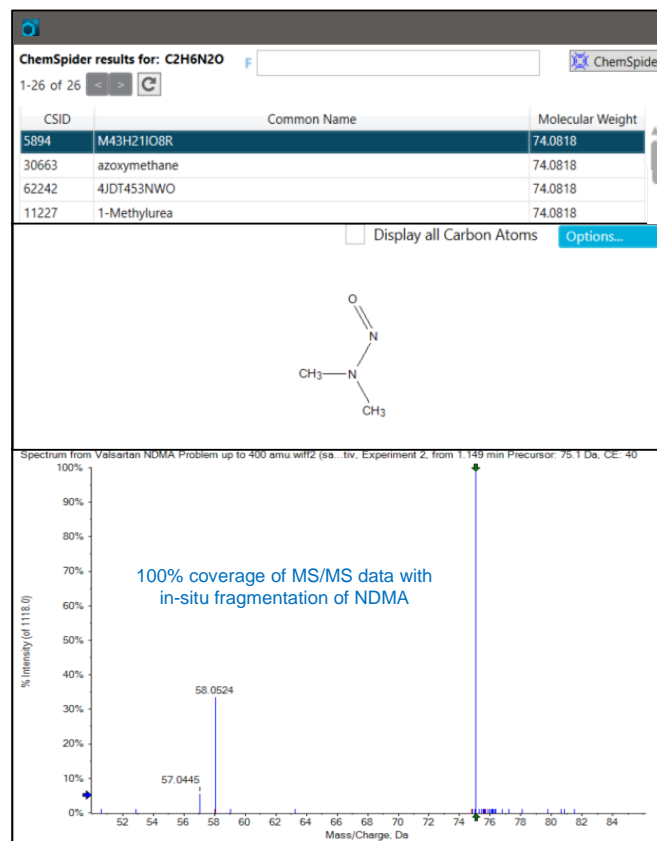
The classic workflow using LC-MS/MS for unknown screening suffers from information overload: thousands of features, which are typically detected within a real sample make it nearly impossible to detect a single, important, unwanted and possibly low abundant impurity within an appropriate timeframe. In contrast, GUCS workflow employed by the SCIEX X500R QTOF System and SCIEX OS software 1.5 allows the automated comparison of a reference sample or standard against one or more samples and focuses on the relevant features which are not present in the reference. The GUCS workflow is ideal for impurity profiling and pharma QC where the safety profile of pharmaceutical products can be more accurately assessed without investing considerable additional time.

## GUCS Workflow for Impurity Analysis

Because NDMA was known to be a contaminant in many Valsartan products, the first part of this study was to develop an optimized LC-MS/MS method for detection of NDMA and related compounds using the GUCS workflow (Method 1 for chromatography and mass spectrometry).

Table 2 lists differentially detected peaks from a GUCS analysis of a generic Valsartan medicinal product (1A Pharma, HL6907) against a reference standard (Valsacor D60897). The GUCS workflow uses an algorithm to search for peaks in both the reference and the sample and then performs a library search on anything exceeding a threshold specified in the method. In this case, all compounds that were detected with an area ratio >7x sample:control are listed and sorted according to abundance. Twenty-four compounds were detected in the generic product that were not detected in the reference standard (or were significantly lower).

If a peak is not identified from the library search, the user has the option to initiate a ChemSpider search with a single click. ChemSpider will search for the best chemical formula that matches the accurate mass and isotopic ratio information from the MS data. Then using the structure file (.mol file) returned



**Table 2. GUCS Results from Optimized NDMA Method.**

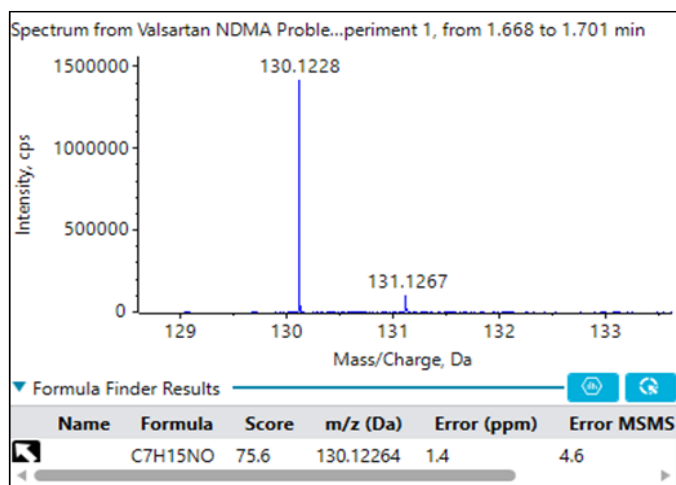
Index	Component Name	Precursor Mass	Expected RT	Retention Time	Area Ratio of comp...
2418	130.1228 / 1.67	130.123	1.67	1.68	1505.136
2560	145.1340 / 1.53	145.134	1.53	1.53	965.627
2088	75.0559 / 1.15	75.056	1.15	1.14	172.325
2215	106.0868 / 0.88	106.087	0.88	0.87	96.950
2292	116.1076 / 1.32	116.108	1.32	1.32	41.199
2129	88.0763 / 1.11	88.076	1.11	1.11	36.288
2995	194.0970 / 2.54	194.097	2.54	2.54	19.552
3362	237.1138 / 2.54	237.114	2.54	2.54	19.502
3706	296.2589 / 3.95	296.259	3.95	3.95	16.771
2463	136.0222 / 2.10	136.022	2.10	2.09	15.354
3146	209.1080 / 2.54	209.108	2.54	2.54	14.240
2522	141.0917 / 1.16	141.092	1.16	1.17	11.266
2185	99.0550 / 1.18	99.055	1.12	1.12	9.947
2146	95.0598 / 1.11	95.060	1.11	1.12	9.132
2538	143.0709 / 1.11	143.071	1.11	1.12	8.659
2929	186.1496 / 1.55	186.150	1.55	1.55	8.448
2801	172.1338 / 1.32	172.134	1.32	1.31	8.340
2238	109.1018 / 1.32	109.102	1.32	1.32	8.162
3089	203.0920 / 1.13	203.092	1.13	1.12	8.045
2309	118.1234 / 0.88	118.123	0.88	0.88	7.690
2638	155.1072 / 1.32	155.107	1.32	1.31	7.667
3056	199.0971 / 1.11	199.097	1.11	1.12	7.601
2517	141.0552 / 1.11	141.055	1.11	1.12	7.433
2204	102.0919 / 1.20	102.092	1.20	1.20	7.258

**Figure 2. ChemSpider and AutoFrag Workflow.** The top lists isobaric compounds identified using the ChemSpider database and the accurate mass and isotopic ratio from the MS data. The structure of the top hit is shown in the center. At the bottom, the AutoFrag results show a color-coded verification: blue fragments are calculated from the given structure and red fragments cannot be produced from the structure. As shown, 100% correlation and coverage are observed for NDMA.

from ChemSpider, the AutoFrag tool will perform an in situ fragmentation and match it to the experimental MS/MS data.

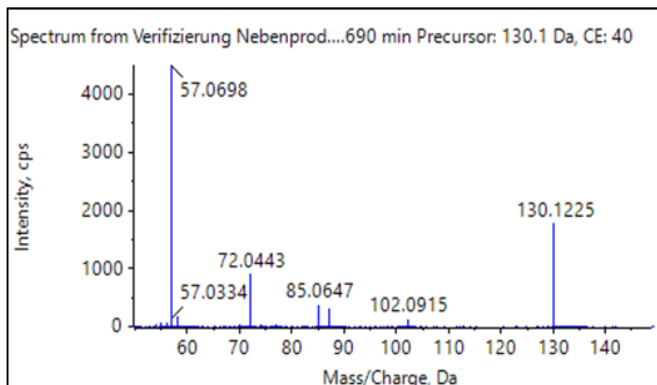
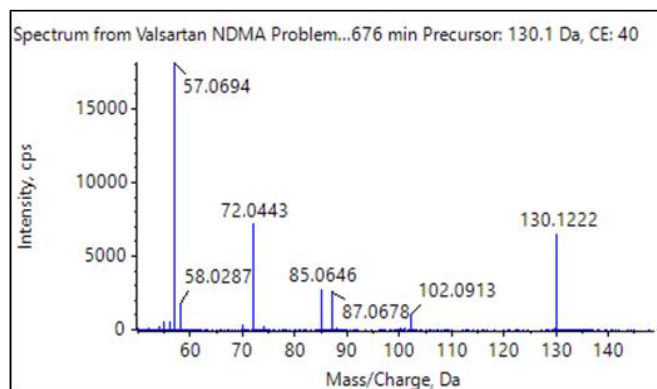
NDMA was identified to be the third most abundant impurity during the automated library searching. As shown in Table 2, NDMA was over 170x higher in abundance in the 1A Pharma product compared with the Valsacor reference standard.

If NDMA had not been identified during the library search, Figure 2 demonstrates the ChemSpider and AutoFrag workflow. Using high resolution accurate mass and isotopic ratio information from the MS data, a formula of  $C_2H_6N_2O$  is predicted for  $m/z$  75.0559. Next, the ChemSpider search returns possible compounds that match this formula. The AutoFrag tool then performs an in-situ fragmentation of the ChemSpider structures and compares it to the actual measured MS/MS fingerprint. NDMA matches with high coverage and is clearly the correct identification.



**Figure 3. MS Spectrum for the Most Abundant Compound from Table 2.** Using accurate mass data and isotope ratio, a chemical formula of C<sub>7</sub>H<sub>15</sub>NO is predicted for m/z 130.1228 at RT 1.68 min.

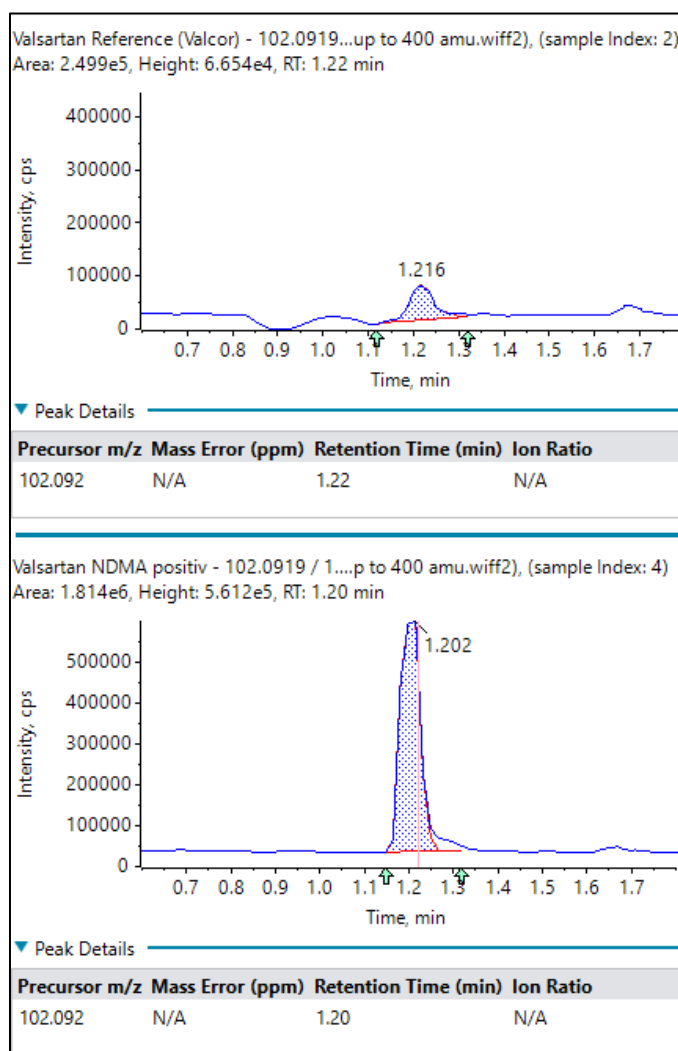
Figure 1 shows a comparison of the 1A Pharma product and Valsacor reference standard XICs for m/z=130.123 at RT=1.68. This is the most abundant impurity found in Table 2. As shown in Figure 1 the concentration of this compound is over 1000x higher in the generic product than in the reference. Figure 3 shows the



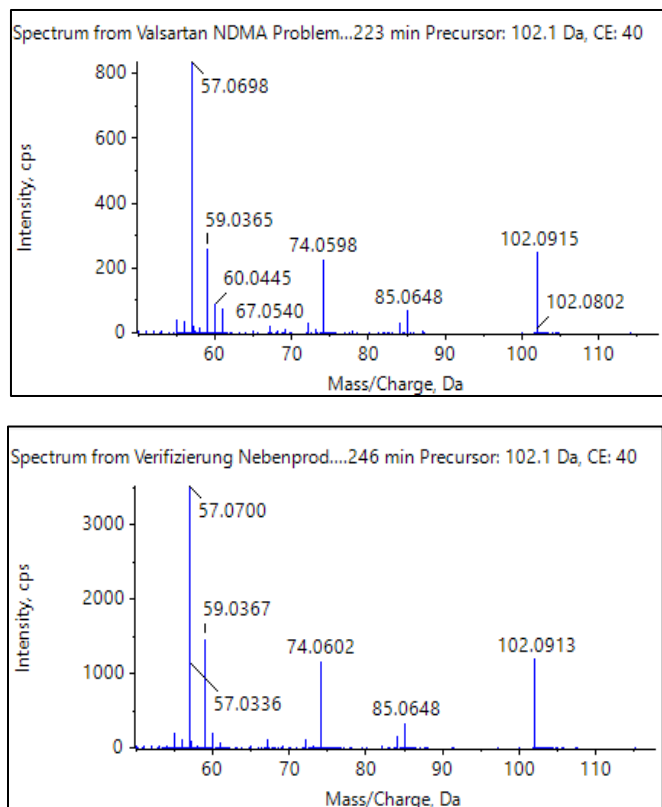
**Figure 4. Comparison of MS/MS Data for Dimethylvaleramide.** (Top) MS/MS spectrum from m/z 130.123 at RT 1.68 from 1A Pharma sample. (Bottom) The MS/MS spectrum for a dimethylvaleramide standard showing the same fragmentation pattern. The sample and standard also had identical RT.

MS data for this compound, which was identified to be dimethylvaleramide. This identification was later confirmed using a dimethylvaleramide standard (Figure 4).

For comparison, XICs for the peak with the lowest area ratio from Table 2 are shown in Figure 5. Trace amounts were detected in the Valsacor reference standard, while over 7x higher abundance was detected in the 1A Pharma sample. The system automatically identified this compound from the library matching as valeramide which was later confirmed using a valeramide standard (Figure 6).



**Figure 5. Comparison of XIC Data for Valeramide.** (Top) Valsacor reference standard. (Bottom) 1A Pharma sample. Trace amounts of valeramide are detected in the reference standard while 7x higher abundance is found in the 1A Pharma sample.



**Figure 6. Comparison of MS/MS Data for Valeramide.** (Top) MS/MS spectrum from m/z 102.092 at RT 1.2. (Bottom) The MS/MS spectrum for a valeramide standard showing the same fragmentation pattern. The sample and standard also had identical RT.

As the majority of organic compounds can more easily be ionized using positive ion electrospray ionization (ESI), a more generic method for the GUCS workflow (as outlined in Method 2) was used for the second part of this study. Using ESI and SWATH acquisition, the number of differentially detected components significantly increased by about a factor of 24 using identical search criteria. Although this method is not optimized for NDMA, and is, instead, a more general approach for detecting all compounds, all three compounds previously discussed (NDMA, valeramide, and dimethylvaleramide) were detected above the 7x threshold.

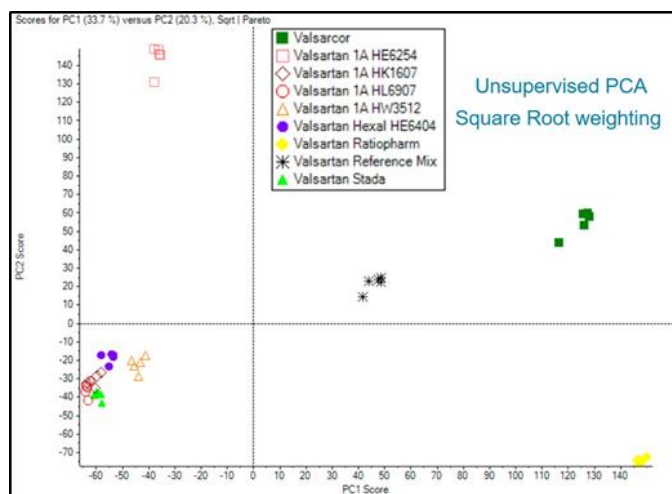
The list of differentially detected compounds using the generic method is much larger with potentially many more unidentified peaks than the list generated using the NDMA optimized method. However, because the chemical reactants in the synthetic pathway are known, and the tablet matrix is known, this narrows down the universe of reasonable suggestions. Thus, the GUCS workflow is highly suitable to monitor batch-to-batch quality issues, identify active component synthesis issues and modifications, and even identify the origin of production – particularly with statistical analysis as shown next.

## Statistical Analysis for Batch Comparison

Another approach to identify potential problems is through the use of statistics. Nine different Valsartan samples from various manufacturers were analyzed using ESI SWATH acquisition (Method 2) and then the raw data were directly imported into MarkerView software. Each sample was run multiple times to account for any autosampler variability or slight chromatographic differences.

Figure 7 shows the unsupervised principal component analysis (PCA) within MarkerView Software. The PCA analysis is performed using m/z, intensity, and retention time for each peak in the data. All replicates group nicely for each Valsartan sample. In fact, PCA is an easy way to assess overall reproducibility since a high degree of reproducibility will be reflected by close clustering within one group. A reproducible LC-MS/MS method is key to detecting small differences between related groups, e.g. low abundant impurities from batch-to-batch production.

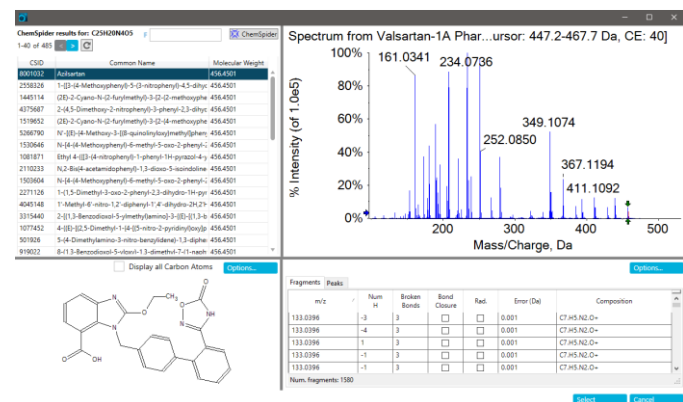
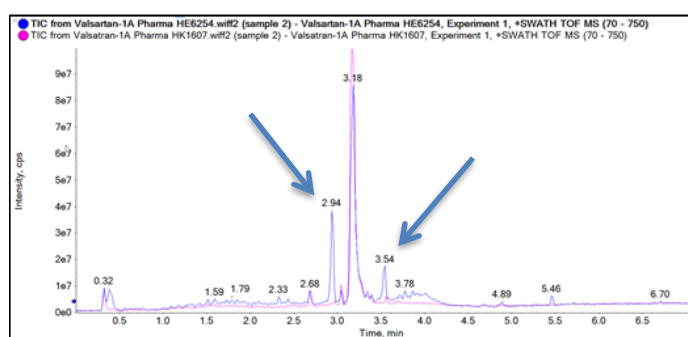
Valsartan Ratiopharm, yellow, lower right quadrant, Valsacor, green, upper right quadrant, and Valsartan 1A Pharma HE6254, red squares, upper left quadrant, are significantly different from the Valsartan products located in the lower left quadrant. In between the above discussed groups, the Valsartan Reference Mix, black asterisk, middle, reflects the average of all samples. This sample was created as a mixture of the other 8 samples and as such, shows commonality with all samples as a cluster in the middle.



**Figure 7. Principal Component Analysis (PCA) using MarkerView Software.** The unsupervised PCA analysis of 9 different generic Valsartan products (5 from different 1A Pharma batches) is shown. Replicates from different manufacturers group together nicely. One batch from 1A Pharma (HE6254) in the upper left quadrant clearly separates from other 1A Pharma batches in the lower left quadrant indicating significant differences in detected compounds.

Interestingly, the 1A Pharma HE6254 in the upper left quadrant is separated from other 1A Pharma batches in the lower left quadrant indicating there are significant differences between this batch and the other 1A Pharma batches.

Overlaying the TIC data for HE6254 with one of the samples in the lower left quadrant (HK1607) shows two major peaks detected in HE6254, which were not detected in any other sample (Figure 8). Further analysis of the peak at RT 2.93 min with  $m/z$  457.1498 indicates that it is azilsartan, while the peak with RT 3.53 min with  $m/z$  569.1662 is azilsartan-medoxomil. Both of these compounds had been unknowingly spiked into the samples by one of our collaborators as a test of the workflow.



**Figure 8. Identification of Unknown Peak in Valsartan Product.** (Top) TIC of HK1607 (magenta trace) overlaid with HE6254 (blue trace). Clear differences are seen with 2 major additional peaks observed in the TIC for HE6254 (blue arrows). (Bottom) ChemSpider and AutoFrag results for the HE6254 peak at RT 2.93 min with  $m/z$  457.1498 showing the identification of azilsartan.

## Conclusions

GUCS workflow is a simple and easy-to-use workflow that can greatly benefit pharma QC labs by enabling the streamlined detection of trace amounts of impurities. Because of the high resolution and mass accuracy of the X500R QTOF system, the workflow provides excellent selectivity for both qualitative and quantitative analysis even in complex formulations and matrices. This type of workflow is mandatory in order to ensure accurate impurity profiling and impurity monitoring as well as to detect and quantify trace amounts of potentially critical impurities. In combination with comprehensive SWATH acquisition, relevant differences between a reference and one or more samples can easily be detected, verified, and identified from the MS/MS data.

Statistical analysis can provide further insight into impurity origins by highlighting inconsistencies on a larger batch-to-batch scale. Differences between batches and production sites can be discerned that can help pinpoint the origin of any impurities due to changes in synthetic route or other factors.

## References

1. German Federal Institute for Drugs and Medical Devices, BfArM, press release no. 5/18, 2018, July 4, 2018.
2. Food and Drug Administration, FDA announces voluntary recall of several medicines containing Valsartan following detection of an impurity, July 13 2018.
3. FDA ARB Recalls: UCM615703.pdf, November 2018, 27<sup>th</sup>

## Acknowledgements

This work was initiated and driven by the Group of Prof. Fritz Sörgel, Institute for Biomedical and Pharmaceutical Research, IBMP, Prof. Ulrike Holzgrabe, University of Würzburg, and Prof. Mona Tawab, Zentrallaboratorium Deutscher Apotheker e.V., and their teams, respectively. Thanks to Dr. Clemens Bidmon for coordinating and summarizing the status quo around the latest findings.